

Memorandum



CITY OF DALLAS

DATE October 28, 2022

TO Honorable Mayor and Members of the City Council

SUBJECT **Independent School District Engagement**

To increase and organize engagement with our education communities, the Office of Government Affairs has begun development of a work plan with peer departments. The work plan will establish a framework for communication and collaboration with city departments and the 12 school districts that extend into the City of Dallas and will aid staff in identifying potential opportunities for collaboration.

Enclosed is a map of the 12 school district boundaries within Dallas. Those with school facilities are noted with an asterisk:

- Dallas*
- Carrollton-Farmers Branch*
- Cedar Hill
- Coppell*
- Duncanville*
- Garland
- Grand Prairie*
- Highland Park*
- Lancaster
- Mesquite
- Richardson*
- Plano*

Several overarching priorities have been identified through weekly internal team meetings across departments that will be included as part of strategic engagement.

A virtual roundtable was held on Thursday, October 27, with our partner school districts to discuss opportunities for collaboration. Student safety, or *school hardening*, is the highest priority. Currently, Dallas Independent School District receives \$9.72 per student for school safety resources; however, that does not include access to mental health resources. We can expect to see increased funding for student safety as a legislative priority from the school districts. Additional items discussed during the meeting were traffic management, future land use and increased support for the unsheltered student population.

We look forward to continuing to work with our schools to ensure we are meeting the needs of our youngest residents. Should you have any questions, please contact me or Victoria Moe, Manager of Government Affairs.

Handwritten signature of Carrie Rogers in black ink.

Carrie Rogers
Director

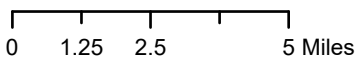
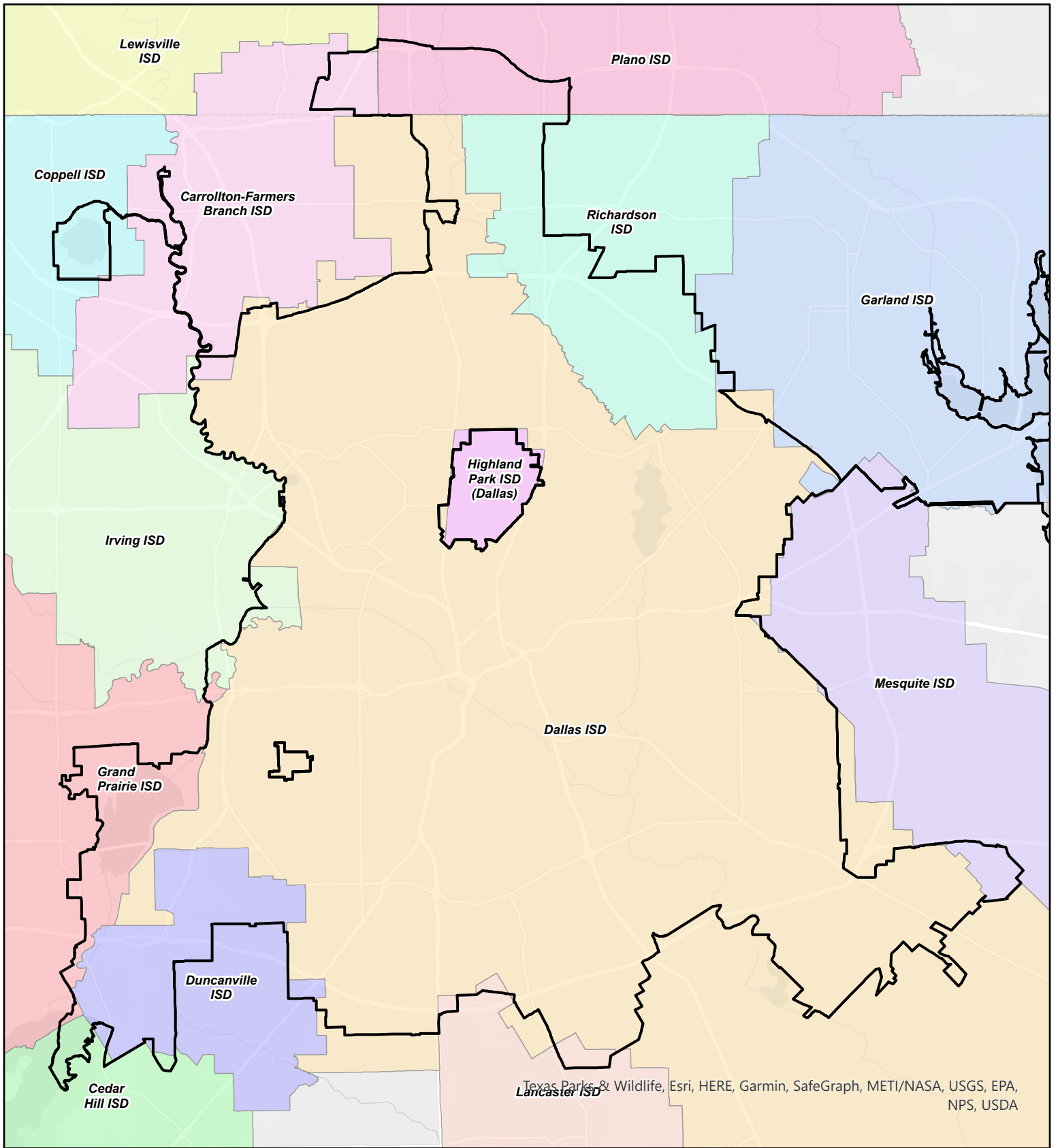
Office of Government Affairs

DATE October 28, 2022

SUBJECT **Independent School District Engagement**

c: T.C. Broadnax, City Manager
Chris Caso, City Attorney
Mark Swann, City Auditor
Billerae Johnson, City Secretary
Preston Robinson, Administrative Judge
Kimberly Bizer Tolbert, Deputy City Manager
Jon Fortune, Deputy City Manager

Majed A. Al-Ghafry, Assistant City Manager
M. Elizabeth (Liz) Cedillo-Pereira, Assistant City Manager
Dr. Robert Perez, Assistant City Manager
Carl Simpson, Assistant City Manager
Jack Ireland, Chief Financial Officer
Genesis D. Gavino, Chief of Staff to the City Manager
Directors and Assistant Directors



Independent School Districts within Dallas

DISCLAIMER

This data is to be used for graphical representation only. The accuracy is not to be taken/used as data produced by a Registered Professional Land Surveyor (RPLS) for the State of Texas. 'This product is for informational purposes and may not have been prepared for or be suitable for legal, engineering, or surveying purposes. It does not represent an on-the-ground survey and represents only the approximate relative location of property boundaries.' (Texas Government Code § 2051.102)

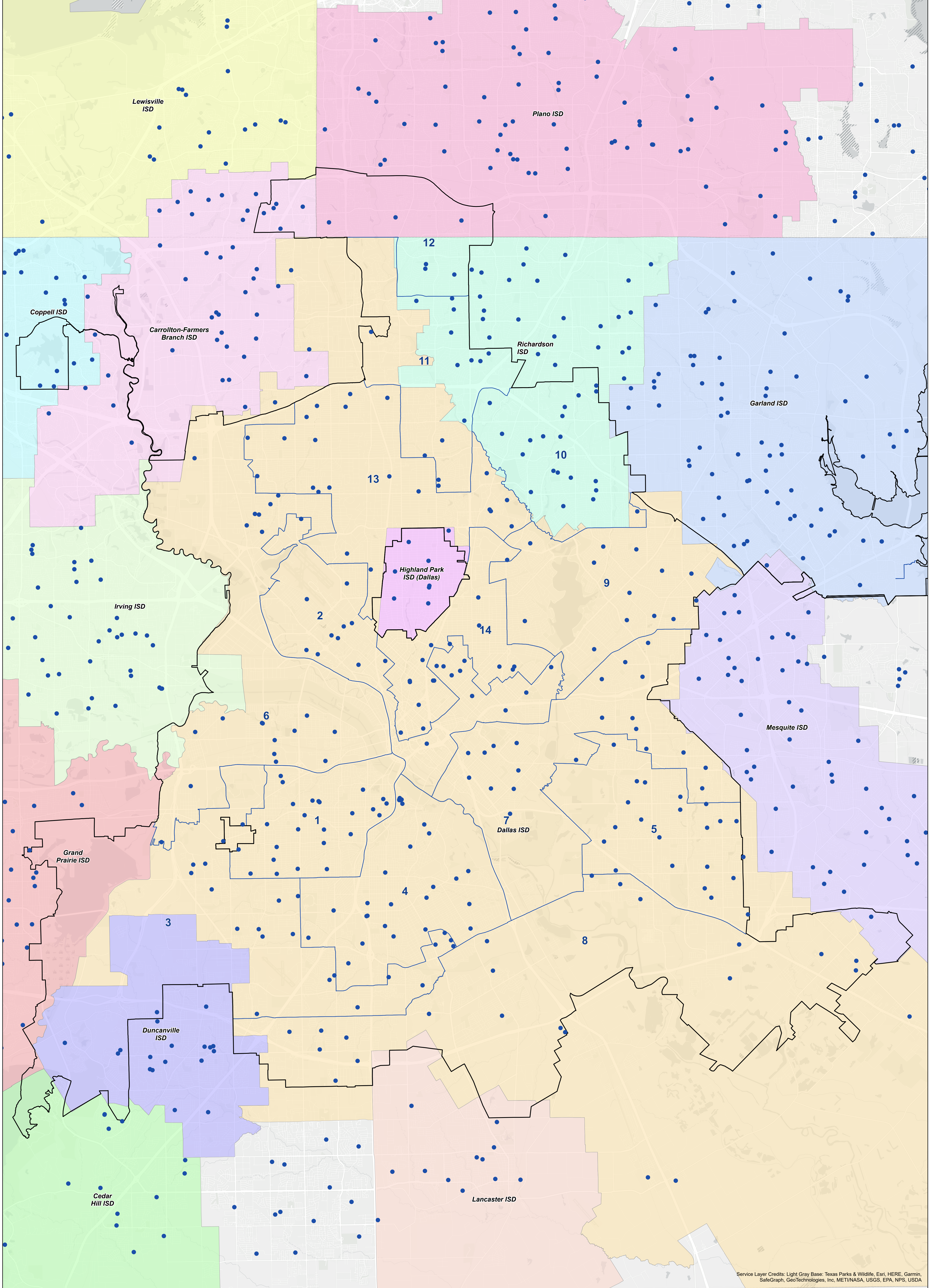


City of Dallas



Date: 10/19/2022

- | | | |
|--|----------------------------|----------------|
| Dallas City Limit | Dallas ISD | Irving ISD |
| Independent School Districts (2020) | Duncanville ISD | Lancaster ISD |
| Carrollton-Farmers Branch ISD | Garland ISD | Lewisville ISD |
| Cedar Hill ISD | Grand Prairie ISD | Mesquite ISD |
| Coppell ISD | Highland Park ISD (Dallas) | Plano ISD |
| | | Richardson ISD |



Service Layer Credits: Light Gray Base: Texas Parks & Wildlife, Esri, HERE, Garmin, SafeGraph, GeoTechnologies, Inc, METI/NASA, USGS, EPA, NPS, USDA

0 4 8 Miles

DISCLAIMER
 This data is to be used for graphical representation only. The accuracy is not to be taken/used as data produced by a Registered Professional Land Surveyor (RPLS) for the State of Texas. This product is for informational purposes and may not have been prepared for or be suitable for legal, engineering, or surveying purposes. It does not represent an on-the-ground survey and represents only the approximate relative location of property boundaries. (Texas Government Code § 2051.102)

Independent School Districts within Dallas



City of Dallas
 Date: 10/25/2022



Data Sources: City of Dallas, Office of Data Analytics and Business Intelligence, Enterprise GIS, NCTCOG GIS (2020 School District Boundaries)

<ul style="list-style-type: none"> ● Primary and Secondary Schools Council Boundaries Dallas City Limit 	Independent School Districts (2020) <ul style="list-style-type: none"> Carrollton-Farmers Branch ISD Cedar Hill ISD Coppell ISD 	<ul style="list-style-type: none"> Dallas ISD Duncanville ISD Garland ISD Grand Prairie ISD Highland Park ISD (Dallas) Irving ISD 	<ul style="list-style-type: none"> Lancaster ISD Lewisville ISD Mesquite ISD Plano ISD Richardson ISD
---	---	---	--