

Memorandum



CITY OF DALLAS

DATE April 15, 2022

TO Honorable Mayor and Members of the City Council

SUBJECT **Questions from the March 29, 2022 Transportation and Infrastructure Committee Meeting**

On March 29, 2022, the Transportation and Infrastructure Committee was briefed on Dallas Water Utilities - Integrated Pipeline Project (IPL). Tarrant Regional Water District (TRWD) provides regular updates on the progress of the project which we will be sharing with the Council on a quarterly basis which is attached. The following information is provided in response to questions asked during the meeting.

Provide a breakdown of the M/WBE participation and company business locations on the projects to date.

Please find attached year to date information from TRWD on the M/WBE participation for the IPL Project. The total breakdown for local firms is \$219,987,046 and \$45,805,358 for non-local.

Does TRWD have a local preference policy?

Yes, the attached "Fair Opportunities Purchasing and Contracting Policy" was amended in 2016 and is included in the original contracting documents for the IPL Project. This document is Appendix A in TRWD's Fair Opportunities Purchasing and Contracting Policy recently revised by the TRWD Board and adopted effective April 1, 2022. The area of local business, as defined by TRWD includes a broader definition of "local" such that all areas where work is performed. The excerpt below is from the document:

"Local Business - IPL will refer to businesses that maintain an office within the following counties where the majority of the contract activities will be performed or delivered (Tarrant, Dallas, Anderson, Collin, Denton, Ellis, Freestone, Henderson, Jack, Johnson, Kaufman, Navarro, Parker, Rockwall, or Wise) as "local business." If more than 50% of the business is owned by individual residents residing within the county where the majority of contract activities will be performed or delivered, this would also be considered a "local business"."

What will be done to recruit and assist Dallas' local and M/WBE companies in future contracts?

The City will be working with the TRWD and our staff to develop a robust outreach and education initiative for upcoming work that is estimated to be "on the street" within the next several years. As the timing for awards becomes closer, we anticipate even more interest by our local community. TRWD has requested that the City provide a list and contact information for our chambers of commerce and contracting agencies so that they

DATE April 15, 2022

SUBJECT **Questions from the March 29, 2022 Transportation and Infrastructure Committee Meeting**

will receive all notices for solicitation of projects Building on existing efforts, the City will hold work sessions, vendor registration training and assistance, symposiums on best practices with insurance and bonding agencies, learning sessions with lending and credit agencies, and provide opportunities for businesses to make business to business connections for partnering opportunities.

Additionally, the project to connect the IPL to Bachman Water Treatment Plant, estimated to be approximately \$500M, is scheduled to begin over the next several years and this project is separate from the IPL and will be awarded through DWU's Capital Improvement Program.

Provide a schedule for bond issuances in 2022 and 2025. Also, provide the bond RFQ.

Tarrant Regional Water District (TRWD) applied for SWIFT funding from the Texas Water Development Board for the October 2022 revenue bond issuance to take advantage of lower interest rates. We have verbal approval with formal approval due this month for the October sale of approximately \$250M. As we get closer to the 2025 bond issuance, depending on market conditions, TRWD will either apply for state funding or go out for bids.

If you have any questions, please contact Terry Lowery, Director Dallas Water Utilities at 214-670-3143.



Kimberly Bizer Tolbert
Deputy City Manager

c: T.C. Broadnax, City Manager
Chris Caso, City Attorney
Mark Swann, City Auditor
Billerae Johnson, City Secretary
Preston Robinson, Administrative Judge
Jon Fortune, Deputy City Manager

Majed A. Al-Ghafry, Assistant City Manager
M. Elizabeth (Liz) Cedillo-Pereira, Assistant City Manager
Robert Perez, Interim Assistant City Manager
Carl Simpson, Interim Assistant City Manager
M. Elizabeth Reich, Chief Financial Officer
Genesis D. Gavino, Chief of Staff to the City Manager
Directors and Assistant Directors



Fair Opportunities Purchasing/Contracting Policy

1.0 PURPOSE

The Tarrant Regional Water District (TRWD), which includes TRWD/Dallas Integrated Pipeline Project (IPL) will strive to ensure that all businesses, regardless of size, economic, social or ethnic status have an equal opportunity to participate in TRWD’s procurement processes. For purposes of incorporating these entities, we will refer to TRWD as the District.

The District is committed to promoting full and equal opportunity for all businesses to supply the goods and services needed to support the mission and operations of the District, and seeks to encourage the use of certified Diverse Businesses (DB or DBs) through the use of race, ethnic, and gender neutral means.

It is the Policy of the District to involve certified DBs as feasible in the procurement of goods, equipment, services and construction projects while maintaining competition, competitive prices and quality of work standards.

The District affirms the good faith efforts (GFEs) of firms who recognize and practice similar business standards.

2.0 NOMENCLATURE

The District will refer to certified Diverse Businesses as minority-owned, woman-owned, socially disadvantaged, economically disadvantaged, small, service-disabled, and/or historically underutilized businesses (HUB).

The District will refer to suppliers, vendors, contractors, consultants, and other companies engaged or retained to provide outside services of any nature as “contractors.” Similar companies engaged by such contractors will be called “sub-contractors, and/or suppliers.”

3.0 Contracting Policy

It is the Policy of the District to demonstrate a good-faith effort (GFE) to provide for meaningful participation by Diverse Businesses. The District, its contractors, their subcontractors and/or suppliers, as well as all vendors of goods, equipment and services, shall not discriminate on the basis of race, color, creed, gender, age, religion, national origin, citizenship, mental or physical disability, veteran's status or political affiliation in the award and/or performance of contracts.

All vendors, suppliers, professionals and contractors doing business or anticipating doing business with the District shall support, encourage and implement affirmative steps toward a common goal of establishing equal opportunity for all citizens and businesses.

Such GFEs include the following:

- A. Identify opportunities for DB involvement and encourage businesses to qualify for and submit offers on District requirements for goods and services.
- B. Divide the work to be contracted into smaller portions where technically and economically feasible.
- C. Make plans and specifications for prospective work available to DBs in sufficient time for review.
- D. Ensure that DBs are aware of opportunities to participate in District purchases and contracts. Actively and affirmatively solicit offers for contracts from DBs, including circulation of solicitations to affiliated associations when possible.
- E. The District will use and recognize the State of Texas (Texas Unified Certification Program and all participating entities) certifications in conjunction with the implementation of this policy. Of those aforementioned recognized certifications, the District reserves the right to review the certification status of any vendor applying to do business with the District. This review will be accomplished to determine the validity and authenticity of the vendor's certification as a DB.
- F. Diverse Businesses that are selected as prime contractors will be given credit for the portion of the actual work performed. The DB prime contractor remains responsible for meeting the subcontracting goal requirement, or for making a good faith effort to do so.
- G. Use the services of, and cooperate with those organizations providing technical assistance, and training in connection with DB participation.

H. Encourage the formation of joint ventures, partnerships, or other similar arrangements among contractors where appropriate.

I. Ensure that provision is made to provide payments on a timely basis as specified in individual project contracts.

J. Evaluate projects, in excess of \$50,000 in the planning phase to determine opportunities to set specific DB goals. The project goal shall be reasonable, expressed as a percentage of total contract, and shall be based on the following considerations:

- Specific sub-contracting opportunities required to complete the project
- Availability of DBs in the identified areas needed

K. Provide potential contractors a copy of TRWD's *Fair Opportunities Purchasing/Contracting Policy*. Clearly communicate that the District expects all contractors to demonstrate good faith in actively soliciting DB sub-contracting and supplying opportunities, and following the District's outreach policies.

L. The intentional misrepresentation of facts by a firm or bidder may result in the barring of receipt of bids and or quotations from the firm or bidder for a specified period of time which may be determined on a case-by-case basis.

NOTE 1: Nothing in this Policy shall be construed to require TRWD to award a contract other than in a manner that complies with all applicable law and, in the Board's judgment, will be most advantageous to TRWD and result in the best and most economical completion of TRWD proposed projects, improvements, facilities, works, equipment, and appliances. Provided however, in cases of tie bids from responsible bidders, awards will be made according to the following principles:

- a) In cases of tie bids for service and procurement contracts, local businesses may be awarded contracts over non-local businesses to the extent allowed by law.
- b) If the foregoing principles do not resolve cases of tie bids, the Board of Directors of TRWD will provide direction to determine the award of the contract. In cases of tie bids for service contracts between (i) two or more local businesses, or (ii) two or more non-local businesses, TRWD may consider all factors that will be most advantageous to the District, including the impact on the ability of TRWD to comply with and promote the policies contained herein.

NOTE 2: Tarrant Regional Water District and the City of Dallas Water Utilities (DWU) have partnered to finance, plan, design, construct and operate the IPL Project.

Due to the multiagency participation in this project, please see **Appendix A** for additional Policy requirements related to the IPL Project.

4.0 Reporting Procedures

All contractors are to report sub-contracting and/or supplying activities with DBs with each invoice submitted for payment, during the life of their contract. Verified certifications are to accompany documentation, along with participation percentage of total contract, as well as specific dollar amount spent through DBs. The District reserves the right to conduct a third party audit of all reports prepared by awardees.

The Finance Director shall maintain responsibility for tracking and monitoring DB participation and shall train and advise all departments of the District's Fair Opportunities Purchasing/Contracting Policy.

The department issuing the contract shall maintain responsibility for verifying all certifications with the appropriate certifying agency and for establishing expectations with contractors.

5.0 Review of Policy

The Finance Director for the District shall present a report quarterly and annually to the Board of Directors.

This Policy shall be reviewed by the TRWD Finance Director annually, and amended or ratified as appropriate.

(Appendix A) IPL



Tarrant Regional Water District (TRWD) and the City of Dallas Water Utilities (DWU) have partnered to finance, plan, design, construct and operate the Integrated Pipeline (IPL) Project. The IPL Project is an integrated water delivery transmission system connecting Lake Palestine to Lake Benbrook with connections to Cedar Creek and Richland-Chambers Reservoirs integrating TRWD's existing pipelines and creating flexibility in delivery as well as quick response to fluctuating customer water demands. The IPL Project consists of 150 miles of pipeline, three new lake pump stations, and three new booster pump stations delivering a required capacity of 350 million gallons per day (MGD) of raw water to North Central Texas. TRWD and DWU currently serve over 4.1 million residents and the IPL will allow these agencies to continue supporting regional community and economic growth.

The policies below are in addition to the policies that are discussed under TRWD:

1.0 PURPOSE

The IPL leadership is committed to an active process of Diverse Business and local business development that will strengthen the business community through the construction of the project.

2.0 NOMENCLATURE

Local Business - IPL will refer to businesses that maintain an office within the following counties where the majority of the contract activities will be performed or delivered (Tarrant, Dallas, Anderson, Collin, Denton, Ellis, Freestone, Henderson, Jack, Johnson, Kaufman, Navarro, Parker, Rockwall, or Wise) as "local business." If more than 50% of the business is owned by individual residents residing within the county where the majority of contract activities will be performed or delivered, this would also be considered a "local business".

Percentage goals are provided as a baseline for inclusion of Diverse Business/Local business participation. It is the intent of IPL to provide DB/Local vendor (business) development through the construction of the project. Both DBs and/or local businesses will be encouraged in the selection criteria to the extent allowed by law.

In an effort to provide DBs the opportunity to provide goods, equipment and services as the prime contractor, the IPL Team has established subcontracting goals of twenty-five percent (25%), and requirements for all prospective bidders to ensure a reasonable degree of DB participation. IPL will exclude the purchase price of all large diameter pipe sizes 120", 108", 96", and 84" from the prime contractor subcontracting goals.

(Appendix A) IPL continued

IPL will purchase directly from the manufacturer major material items of the project including, but not limited to: mains, valves and pumps, where the opportunity to satisfy the overall DB project goals are limited. However, a Good Faith Effort will be made to encourage DB participation in the handling, distribution and delivery of such major material items to the project's construction sites. This supports the IPL's commitment to provide development opportunities for DB/Local business to complete work of substance that is sustainable. Encourage contractors to strengthen their own Equal Employment Opportunity Programs. Upon request, a contractor shall provide a compliance report that includes employment practices, policies, programs and statistics.

3.0 CONTRACTING POLICIES

Please refer to TRWD's Policy page located on page 2 in addition to the following:

Project Coordination Team: TRWD/Dallas IPL will refer to the representatives from both TRWD and Dallas as selected in accordance with the TRWD/Dallas Contract as "Project Coordination Team". The project coordination team will provide guidance to the MHL Business Coordination Team.

Minority/Woman Business Enterprise (M/WBE) & HUB/Local (MHL) Business Coordination Team: TRWD/Dallas IPL Project will refer to the representatives who will be responsible for the implementation of this Policy as **MHL** Business Coordinator(s).

The MHL Business Coordination Team will be a liaison to the Project Coordination Team. The MHL Coordination Team will evaluate compliance with this Policy and award the 15 points allowable as applicable.

4.0 Reporting Procedures

A status report of Diverse Business participation will be submitted quarterly to both TRWD Finance Director and the City of Dallas Executive Manager of Business Development and Procurement Services.

5.0 Review of Policy

This Policy shall be reviewed by the City of Dallas DWU Director and the TRWD Finance Director annually, and amended or ratified as appropriate.

(Appendix A) IPL continued

TRWD and Dallas, as partners in the Policy, reserve the right to jointly waive, modify, amend, or withdraw all or any part of this Policy at any time. This Policy is not contractual and creates no rights in any prospective contracting party.

6.0 Policy Compliance and Disputes

The MHL Business Coordination Team shall be responsible to determine compliance with the policy. To ensure that the prime has complied with the TRWD/Dallas IPL Project Fair Opportunities Purchasing/Contracting Policy throughout the performance of the contract, MHL Business Coordination Team will be responsible for reviewing and approving M/MWBE & HUB participation levels prior to final payment to the prime contractor. The MHL Business Coordination Team must be able to reconcile the final report with appropriate documentation on file. If the difference cannot be reconciled, the MHL Business Coordination Team will convene a review committee with the prime contractor and request additional documentation to explain the discrepancy. Once all issues are resolved, the MHL Business Coordinator-TRWD will contact the project manager to recommend final payment.

Failure to Comply

The failure of a contractor to adequately comply with the TRWD/Dallas IPL Fair Opportunities Purchasing/Contracting Policy shall be considered in the award of contracts.

A contractor who fails to adequately document a subcontract with M/WBE & HUB firms to purchase significant material supplies from M/WBE and/or HUB firms may be denied award of the contract on the grounds of non-responsibility.

If, during the performance of the contract, the contractor is found not to be fulfilling commitments to utilize M/WBE & HUB subcontractors and no acceptable justification has been offered by the prime, this failure to fulfill commitments may be considered in the award of future contracts and may result in the denial of such future contract to the prime contractor.

(Appendix A) IPL continued

A prime contractor may be disqualified for contract awards for a three year period upon the determination that the contractor:

- a. is non-responsible based upon poor performance
- b. is engaged in pass-through brokering
- c. is engaged in pay-rolling
- d. has been deficient in regards to other integrity issues

Disputes

All disputes regarding the administration of or compliance with the TRWD/Dallas IPL Project Fair Opportunities Purchasing/Contracting Policy will be directed to MHL Business Coordination Team. If resolution cannot be achieved, the prime contractor or subcontractor may file a formal complaint. The TRWD General Manager's Office will conduct a thorough investigation of the formal complaint.

In a timely manner, the General Manager's Office will notify, in writing, all concerned parties, including: the Director of DWU, MHL Business Coordination Team, and the Project Coordination Team, of the resolution to each complaint.

Certifications

Acceptable Certifications:

- M/WBE – Minority Woman Business Enterprise
- HUB – Historically Underutilized Business
- SBE – Small Business Enterprise
- WBE – Woman Business Enterprise
- DBE – Disadvantaged Business Enterprise
- Diverse Business – minority-owned, woman-owned, socially disadvantaged, economically disadvantage, small, service-disabled, and/or historically underutilized business
- TUCP – Texas Unified Certification Program

Acceptable Certification Agencies:

- North Central Texas Regional Certification Agency (NCTRCA)
- South Central Texas Regional Certification Agency (SCTRCA)
- TxDot DBE Certification
- DFW Minority Supplier Development Council. (DFWMSDC)
- Woman’s Business Council – Southwest (WBCS)
- State of Texas HUB
- Texas Unified Certified Program

TRWD will also recognize the following certifications from Small Business Administration:

- Small Disadvantaged Business
- 8 (a) Business Development Program
- HUBZone Program
- Service Disabled Veteran-Owned Businesses
- Woman Owned Small Businesses



INTEGRATED PIPELINE PROJECT

QUARTERLY EXECUTIVE SUMMARY

December 2021



PL17TUN aerial photo of cleanup at main tunnel shaft location

IPL PROGRAM MANAGEMENT

Tarrant Regional Water District

804 East Northside Drive

Fort Worth, TX 76102

817.720.4469 p

817.720.4397 f

iplproject.com

[@IPL_Project](https://twitter.com/IPL_Project)

TARRANT REGIONAL WATER DISTRICT (TRWD) and the CITY OF DALLAS WATER UTILITIES (DWU)

have partnered to finance, plan, design, construct and operate the Integrated Pipeline (IPL) Project. The IPL Project is an integrated water delivery transmission system connecting Lake Palestine to Lake Benbrook with connections to Cedar Creek and Richland-Chambers Reservoirs integrating TRWD's existing pipelines and creating flexibility in delivery as well as quick response to fluctuating customer water demands. The IPL Project consists of 150 miles of pipeline, three new lake pump stations, and three new booster pump stations delivering a required capacity of 350 million gallons per day (MGD) of raw water to North Central Texas. TRWD and DWU currently serve over 4.1 million residents and the IPL will allow these agencies to continue supporting regional community and economic growth.

PROGRAM SUPPORT SERVICES

through 12.31.2021

CONTRACT DESIGN AND CONSTRUCTION	DESCRIPTION	BUDGET	CONTRACTS ISSUED	TOTAL INVOICED
PROGRAM WIDE PROFESSIONAL SERVICES		\$133,062,000	\$52,438,996	\$85,567,107
Program Management	Overall program management services for implementation of the IPL Project. (Extension of TRWD staff)	\$45,000,000		\$35,124,711
Conceptual Design / Environmental / Permitting	Operations plan & Prepare 404 permit application, Envision Application Completion	\$13,551,000	\$13,248,701	\$13,248,699
Value Engineering	Expert review of design	\$640,000	\$472,248	\$472,248
Surveying and Mapping	Control, property survey, legal descriptions, and Provide SUE Level A Survey, GIS	\$14,600,000	\$11,854,389	\$10,955,362
Geotechnical	Initial Characterization of entire IPL Project	\$12,037,000	\$12,026,275	\$12,026,276
Corrosion Engineering Services	Engineering Corrosion Control	\$3,891,000	\$5,326,362	\$4,721,217
Land, Easement Acquisition, & Support	Right of Entry and Land Acquisition Support Services	\$33,993,000	\$3,464,526	\$3,433,832
Studies		\$3,500,000	\$3,683,743	\$3,587,585
SCADA System	Engineering of SCADA system	\$640,000	\$0	
Microwave System	Engineering of Communications System	\$5,210,000	\$2,362,752	\$1,997,177
DESIGN & CONSTRUCTION ADMINISTRATION		\$201,714,000	\$179,305,975	\$156,669,196
Completed		\$122,733,000	\$103,809,850	\$102,965,265
Active		\$23,326,000	\$52,722,524	\$42,394,351
CH2M Hill	Project Operational Information and Operations Manual		\$6,479,844	\$5,676,758
CH2M Hill	Final Conformance of Design of JCC1	\$728,000	\$9,288,681	\$7,899,545
MWH	Final Conformance of Design of Section 9/10/11	\$506,000	\$1,307,780	\$1,030,295
Black & Veatch	Engineering during Construction of Section 10/11		\$810,000	\$470,995
Black & Veatch	Final Design of Section 12/13/14	\$11,292,000	\$12,338,807	\$12,278,729
Parsons	Final Design of Sections 17/18/Tunnel		\$0	\$0
Brown & Gay	Final Design of Section 19-1	\$5,770,000	\$8,130,200	\$4,017,315
HDR	Final Design of Section 19-2	\$5,030,000	\$8,358,000	\$6,780,948
Burns & McDonnell Trans. Mgmt.	Development of Transportation Management Plan		\$905,203	\$866,643
Burns & McDonnell	High Voltage Design		\$2,578,809	\$2,494,934
Burns & McDonnell	Section 19 Transportation Management Planning		\$690,000	\$100,964
Burns & McDonnell	Final Design of LP1		\$1,063,600	\$6,188
Furgo Consultants, Inc.	Section 19 Tunnel Geotechnical Testing		\$771,600	\$771,037
IPL Partners	Section 19 Tunnel Crossing		\$21,033,560	\$9,721,712
CH2M Hill	Lake Palestine Interim Stage		\$1,169,231	\$1,169,190
Furgo Consultants, Inc.	Section 19 Groundwater Pumping Testing Services		\$570,810	\$418,678
Remaining		\$55,655,000		
CONSTRUCTION / OWNER FURNISHED EQUIPMENT		\$1,729,540,000	\$719,099,657	\$709,611,471
Completed		\$346,119,000	\$212,008,947	\$211,833,088
Active		\$875,818,000	\$507,090,710	\$497,778,383
JB3		\$83,013,000	\$75,779,477	\$73,949,545
MWH Constructors	Construction of JB3 Pump Station	\$51,473,000	\$57,995,805	\$59,398,603
Oncor Electric	Installation of JB3 Substation Transmission Lines	\$1,066,000	\$957,119	\$923,119
Isolux Corsan	Construction of JB3 Substation	\$7,400,000	\$4,864,888	\$4,864,888
R E Monks	Construction of JB3R Restoration	\$0	\$675,782	\$675,782
Pentair Flow Technologies	Construction of JB3 Pumps, Motors, Drives	\$23,074,000	\$11,285,883	\$8,087,153
Pipeline Section 12/13/MBR/JB4 Bypass		\$167,992,000	\$153,555,744	\$153,532,318
Thalle Midlothian	Construction of Sections 12/13/MBR/JB4 Bypass	\$146,310,000	\$143,253,968	\$143,230,542
BAR Constructors	Construction of Richland-Chambers/Cedar Creek Interconnection Facility	\$21,682,000	\$10,177,546	\$10,177,546
Hilco Electric	Relocation of Electrical Service Lines		\$0	\$0

PROGRAM SUPPORT SERVICES

through 12.31.2021

CONTRACT DESIGN AND CONSTRUCTION	DESCRIPTION	BUDGET	CONTRACTS ISSUED	TOTAL INVOICED
Hilco Electric	MBR Radio Tower Power		\$33,312	\$33,312
Oncor Electric	Provide Power to IPL 2X12		\$90,918	\$90,918
Pipeline Section 17		\$109,944,000	\$94,295,830	\$95,700,092
IPL Partners	Construction of Section 17 Tunnel	\$12,252,000	\$48,500,000	\$48,288,969
Thalle Midlothian	Construction of Sections 17/18/JB2 Bypass	\$97,692,000	\$45,795,830	\$47,411,123
CAS Consulting	Design 17, 19 Tunnels		\$3,341,651	\$594,866
Freese and Nichols	Construction Management 17,19, JCC1		\$3,771,901	\$803,325
JCC1		\$106,582,000	\$105,875,879	\$103,214,907
BAR Constructors	Construction of JCC1 Intake	\$21,564,000	\$18,960,214	\$18,960,214
BAR Constructors	Intake Facility & OFE Installation Package 2	\$63,900,000	\$63,690,600	\$62,147,261
Ebara	Construction of JCC1 Pumps, Motors, Drives	\$17,775,000	\$12,694,890	\$11,680,768
Lambda Construction	High Voltage		\$5,773,925	\$5,670,414
Oncor Electric	Construction of JCC1 HV Transmission Lines	\$3,343,000	\$4,756,250	\$4,756,250
Shermco Industries, Inc.	JCC1 and JCC1HV Electrical Testing Services		\$618,000	\$480,593
Pipeline Section 10/11		\$73,679,000	\$55,545,934	\$55,545,325
IPL Partners	Construction of Section 10/11	\$72,362,000	\$42,022,945	\$42,022,337
Oncor Electric	Construction of KBR S1X10 HV Transmission Lines		\$17,452	\$17,452
BAR Constructors	Construction of KBR S1X10	\$1,317,000	\$13,505,537	\$13,505,536
Valve Packages		\$15,166,000	\$14,306,294	\$13,957,412
Garney Construction	Valve Package 1 - Section 15-1 Butterfly Valves	\$518,000	\$0	\$0
Rodney Hunt	Valve Package 2 - Section 15-1 Interconnection Facility Valves	\$474,000	\$733,206	\$733,206
Blackhall Engineering	Valve Package 3 - JB3, Section 15-2, MBR Yard Gate Valves	\$5,500,000	\$6,278,388	\$6,228,595
Crispin Valves	Valve Package 4 - Section 12 RC/CC Interconnection, JB4 Bypass, MBR Yard Butterfly Valves	\$3,999,000	\$2,269,140	\$2,191,128
Crispin Valves	Valve Package 5 - JB3 Butterfly Valves	\$1,249,000	\$1,249,222	\$1,175,870
Ross Valves	Valve Package 6 - Section 12 RC/CC Interconnection Multi-Orifice Valves	\$715,000	\$526,340	\$478,838
Crispin Valves	Valve Package 8 - Section 10 & 11 Bypass Butterfly Valves	\$1,391,000	\$1,461,040	\$1,393,968
Blackhall Engineering	Valve Package 11 - JCC1 Gate Valve	\$1,320,000	\$1,788,958	\$1,755,807
Remaining		\$507,603,000		
CONSTRUCTION MANAGEMENT		\$65,170,000	\$59,634,680	\$54,500,243
Completed		\$15,777,000	\$15,747,552	\$15,747,553
Active		\$17,665,000	\$43,887,128	\$38,752,690
Remaining		\$31,728,000		
CONSTRUCTION MATERIALS TESTING		\$17,296,000	\$13,161,251	\$10,674,145
Completed		\$203,000	\$225,133	\$225,132
Active		\$7,791,000	\$12,936,118	\$10,449,013
Remaining		\$9,302,000		
ROCIP		\$2,575,000	\$42,013,560	\$23,117,815
LAND COST		\$107,384,000	\$78,532,928	\$78,532,928
PROGRAM LEVEL CONTINGENCY		\$83,178,000		
MISCELLANEOUS		\$2,000,000	\$3,903,305	\$3,903,305
GRAND TOTAL		\$2,341,919,000	\$1,148,090,353	\$1,122,576,211
REMAINING BOND FUNDS				\$319,344,669

Note: Total Bonds issued to date \$1,500,000,000

ACCOMPLISHMENTS

through 12.31.2021

IPL PROGRAM GENERAL OPERATIONAL STATUS

The IPL System is currently able to deliver water from Richland Chambers Reservoir to the cross-connections with the existing Richland Chambers and Cedar Creek pipelines at the S2X12 Interconnect Facility near Joe Pool Lake and the future DWU connection point. The IPL System is also able to deliver water to the Arlington Outlet via the S1X10 Pressure Reduction Station, the KBR Bypass pipeline and the Line J Pipeline. Water can be delivered via the IPL system and the existing pipelines to the Rolling Hills Water Treatment Plant and to Lake Benbrook.

The IPL pipelines and facilities that have been completed to accomplish this delivery are:

- S5X15 Interconnect
- Pipeline Sections 15-1 and 15-2
- JB3R Suction Reservoir
- JB3 Booster Pump Station
- Pipeline Section 14
- Midlothian Balancing Reservoir
- Pipeline Sections 12 and 13
- S2X12 Interconnect Facility
- Pipeline Sections 10 and 11
- S1X10 Pressure Reduction Station

CURRENT PROJECT UPDATES

PL12, 13, MBR (Pipeline Sections 12 and 13 combined with the Midlothian Balancing Reservoir)

- Project is complete and operational pending contract closeout.

PL17TUN (Trinity River Tunnel on Pipeline Section 17)

- Completed cleanup of equipment and material around main shaft.
- Restored topsoil around main shaft.
- Placing road base material on Private Road to the ROW.
- Installing road base material at turn out on ROW.

JCC1 (Cedar Creek Lake Pump Station)

- Coupled and aligned motors and pumps.
- Set limits on pump control and bypass ball valves.
- Performed VFD Sequence testing.
- Continue installation of conduit and wiring for heat trace and fire alarms.
- Coated piping at JB2 Valve Vault site.
- Installed electrical ductbanks at JB2 Valve Vault site.

PL10, 11 (Pipeline Sections 10 and 11 from the JB4 Pump Station to the KBR Pressure Reduction Facility)

- Project is complete; final payment and contract closeout were in December 2021.

PL17-18 (Pipeline Sections 17 and 18 from east end of PL15-1 to JCC1 Pump Station)

- Project is complete; final payment and contract closeout were in December 2021.

PL19TX (Tunnels at TxDOT Roadway Crossings for Pipeline Sections 19-1 & 19-2)

- Completed welding joints Crossroads Dr.
- Completed jacking 117" casing pipe and extension of launch shaft at SH 19.
- Completed excavation of tunnel, installation of tunnel support, and installation and welding of carrier pipe at FM 1615.
- Installing access manway vaults.

PL19TUN (Cedar Creek; SH 31; Hollywood Lake; SH 151/Frankston ISD Tunnels for Pipeline Sections 19-1 & 19-2)

- Received proposals from four Offerors.
- Evaluated proposals, shortlisted three teams and concluded selection and negotiation.
- Recommendation for award of contract scheduled for January 2022 Board.

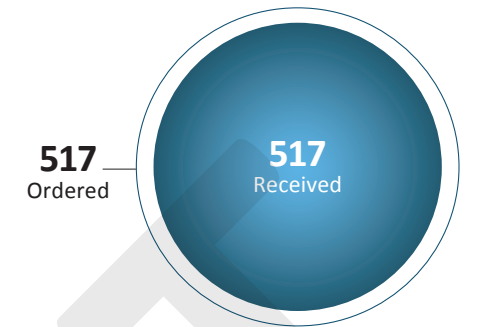
PROJECT SCHEDULE

PROJECT COMPONENTS	2020				2021				2022			
	Q1	Q2	Q3	Q4	Q1	Q2	Q3	Q4	Q1	Q2	Q3	Q4
SECTION 17 TUNNEL CONSTRUCTION												
JCC1 PUMP STATION INTAKE WET WELL CONSTRUCTION												
SECTION 10, 11 CONSTRUCTION												
SECTION 17, 18 CONSTRUCTION												
JCC1 HIGH VOLTAGE SUBSTATION CONSTRUCTION												
JCC1 CONSTRUCTION												
PL19TX CONSTRUCTION												

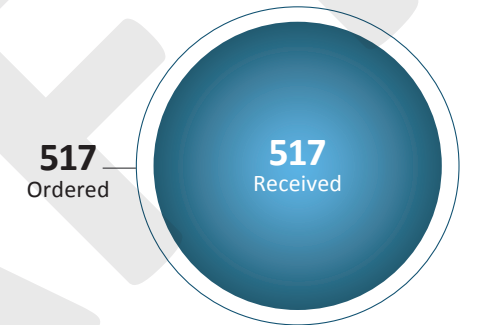
ACTIVITY STATUS

through 12.31.2021

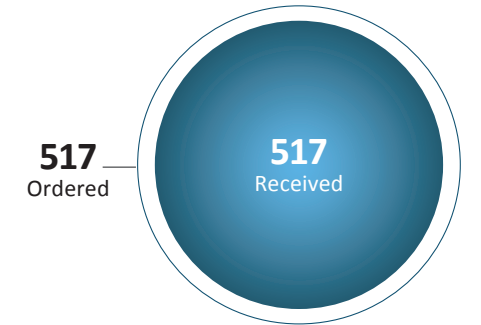
TITLE COMMITMENTS



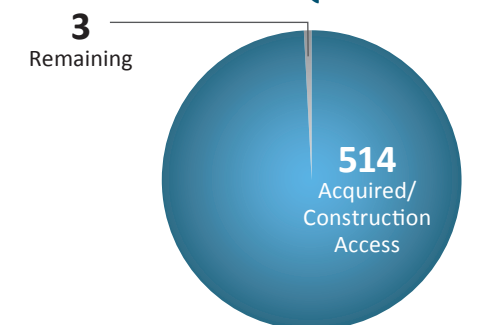
SURVEYS



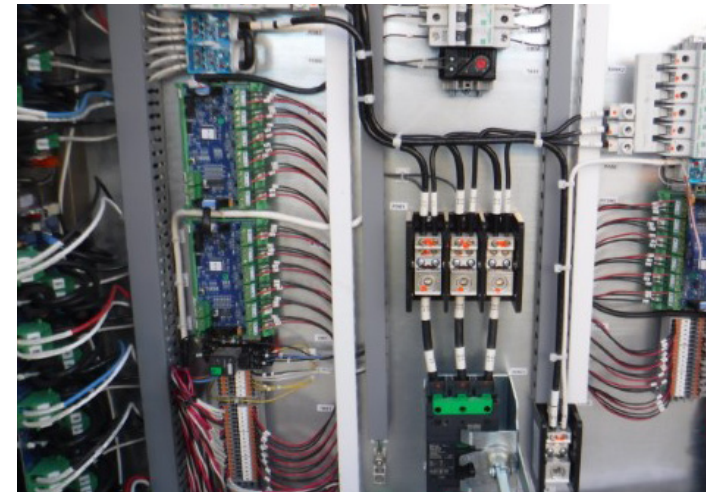
APPRAISALS



LAND ACQUISITION



Total Parent Parcels: 517



JCC1 RTD power and control wiring in heat trace panel



PL19TX Completion of launch shaft extension at SH 19



PL19TX Installation of access manway vault at Crossroads Dr.

M/WBE PARTICIPATION

through 12.31.2021

CONTRACT DESIGN AND CONSTRUCTION	M/WBE & HUB SUB-CONTRACTORS	CONTRACT COMMITMENT		M/WBE HUB INVOICED TO DATE		TOTAL PROJECT COMPLETED TO DATE	
		\$	%	\$	% (PER COMMITMENT)	\$	%
PROGRAM WIDE PROFESSIONAL SERVICES		\$20,396,220	39%	\$19,869,653	97%	\$85,567,107	163%
Program Management		\$6,636,154		\$6,636,689		\$35,124,711	0%
Conceptual Design / Environmental / Permitting		\$2,655,040	20%	\$2,827,565	106%	\$13,248,699	100%
Value Engineering		\$23,187	5%	\$23,178	100%	\$472,248	100%
Surveying and Mapping		\$3,939,250	33%	\$3,831,614	97%	\$10,955,362	92%
Geotechnical		\$3,545,179	29%	\$3,545,034	100%	\$12,026,276	100%
Corrosion Engineering Services		\$1,442,047	27%	\$764,939	53%	\$4,721,217	89%
Land, Easement Acquisition, & Support		\$1,294,859	37%	\$1,534,532	119%	\$3,433,832	99%
Studies		\$41,738	1%	\$41,717	100%	\$3,587,585	97%
Microwave System		\$818,765	35%	\$664,385	81%	\$1,997,177	85%
DESIGN		\$46,184,319	26%	\$38,782,789	84%	\$156,669,196	87%
Completed		\$28,488,898	27%	\$28,528,024	100%	\$102,965,265	99%
Active		\$10,946,375	21%	\$9,276,287	85%	\$41,516,162	79%
CH2M Hill (Ops Manual)	NDM	\$1,063,512	16%	\$939,841	88%	\$5,676,758	88%
CH2M Hill (JCC1)	JQ, Gupta, APM, HVJ, XENCO	\$2,322,170	25%	\$3,044,112	131%	\$7,899,545	85%
MWH	Garzabury, Kevin Sloan	\$364,871	28%	\$221,636	61%	\$1,030,295	79%
Black & Veatch	Texas Design	\$0	0%	\$2,100	0%	\$470,995	58%
Black & Veatch	BDS, CAS, JQ, TME	\$3,056,716	25%	\$3,023,303	99%	\$12,278,729	100%
Parsons	Criado, EPB, HVJ	\$0	0%	\$0	0%	\$0	0%
Brown & Gay	AZB, TME, Lamb-Star, NDM	\$2,032,550	25%	\$807,808	40%	\$4,017,315	49%
HDR	AZB, Daltech, Word Wizards, Gupta	\$1,944,071	23%	\$1,115,989	57%	\$6,780,948	81%
Burns & McDonnell Trans. Mgmt.	Lamb-Star Engineering	\$162,485	18%	\$121,498	75%	\$866,643	96%
Burns & McDonnell	HVJ, JQ, Multatech	\$611,538	24%	\$542,454	89%	\$2,494,934	97%
Burns & McDonnell	Lamb-Star Engineering, LLC, Transtec Group Inc.	\$172,500	25%	\$36,509	21%	\$100,964	15%
Burns & McDonnell		\$265,900	25%	\$0	0%	\$6,188	1%
Furgo Consultants, Inc.		\$0	0%	\$0	0%	\$771,037	100%
IPL Partners	Section 19 Tunnel Crossing	\$5,258,390	25%	\$109,342	2%	\$9,721,712	46%
CH2M Hill	Lake Palestine Interim Stage	\$292,308	25%	\$290,173	99%	\$1,169,190	100%
Furgo Consultants, Inc.	Section 19 Groundwater Pumping Testing Services	\$148,411	26%	\$0	0%	\$418,678	73%
Remaining		\$0	0%	\$0	0%	\$0	0%
CONSTRUCTION / OWNER FURNISHED EQUIPMENT		\$100,285,995	14%	\$179,741,130	179%	\$709,629,907	99%
Completed		\$23,397,169	11%	\$38,680,042	165%	\$211,833,088	100%
Active		\$76,888,826	32%	\$141,061,088	183%	\$497,796,819	98%
JB3		\$15,258,538	26%	\$12,849,194	84%	\$73,949,545	98%
MWH Constructors	Statewide, Cowboy, TX Enviro, Champion, Ram Tool, Rent-a-Fence, Soto Steel, A-Star, Ike, Greystone, LKT, Accurate, Green Scaping	\$13,808,801	27%	\$11,399,274	83%	\$59,398,603	102%
Oncor Electric		\$1,449,737	2%	\$1,449,920	100%	\$4,864,888	8%
Isolux Corsan	Dyna Grid	\$0	0%	\$0	0%	\$923,119	96%
RE Monks		\$0	0%	\$0	0%	\$675,782	14%
Pentair Flow Technologies		\$0	0%	\$0	0%	\$8,087,153	72%

M/WBE PARTICIPATION

through 12.31.2021

CONTRACT DESIGN AND CONSTRUCTION	M/WBE & HUB SUB-CONTRACTORS	CONTRACT COMMITMENT		M/WBE HUB INVOICED TO DATE		TOTAL PROJECT COMPLETED TO DATE	
		\$	%	\$	% (PER COMMITMENT)	\$	%
Pipeline Section 12/13/MBR/JB4 Bypass		\$22,014,773	24%	\$22,270,126	101%	\$153,532,318	100%
Thalle Midlothian	LKT, Statewide, Granados, Desert Steel, ETTL, Glenko, A.N.A., Edwards, Buzz, Bradley-Douglas, Pinnacle	\$21,201,587	27%	\$16,449,588	78%	\$143,230,542	100%
BAR Constructors	Fraire's, DFW Aggregates, Ricochet, MMG, LKT, Brock, Garland Heating & Air, Texas Metal, Buzz, Rangel	\$813,186	8%	\$5,820,538	716%	\$10,177,546	100%
Hilco Electric		\$0	0%	\$0	0%	\$33,312	100%
Oncor Electric		\$0	0%	\$0	0%	\$90,918	100%
Pipeline Section 17		\$15,151,597	23%	\$7,226,323	48%	\$95,700,092	101%
IPL Partners	LKT, Industry Junction, Eagle Aggregate, Suncoast Res, ATS Drilling, RECS, ANA, Alliance, Ram, JC Welding, Luis Moreno	\$9,733,950	23%	\$4,125,302	42%	\$48,288,969	100%
Thalle Midlothian	Fleet Lube, Rambo Controls, AE Trucking, MKI Construction, Stome Water Management, Industry Junction, Ortega Land Clearing	\$5,417,647	24%	\$3,101,021	57%	\$47,411,123	104%
CAS Consulting	Design 17, 19 Tunnels	\$0	0%	\$0	0%	\$594,866	18%
Freese and Nichols	Construction Management 17,19, JCC1	\$452,628	17%	\$101,939	23%	\$803,325	21%
JCC1		\$17,080,697	19%	\$81,080,356	475%	\$103,214,907	97%
BAR Constructors	Industry Junction, K&A Steel, Ricochet Fuel, Ricochet Fuel, Tidy Toilets, Buzz Custom Fence	\$961,283	6%	\$18,008,980	1873%	\$18,960,214	100%
BAR Constructors	Industry Junction, K&A Steel, Ricochet Fuel, Ricochet Fuel, Tidy Toilets	\$14,011,932	23%	\$62,147,261	444%	\$62,147,261	98%
Ebara		\$0	0%	\$0	0%	\$11,680,768	202%
Lambda Construction	High Voltage	\$2,107,483	37%	\$924,115	44%	\$5,670,414	98%
Oncor Electric		\$0	0%	\$0	0%	\$4,756,250	100%
Shermco Industries, Inc.	JCC1 and JCC1HV Electrical Testing Services	\$0	0%	\$0	0%	\$499,029	81%
Pipeline Section 10/11		\$6,930,593	20%	\$17,533,150	253%	\$55,545,325	100%
IPL Partners	LKT, Industry Junction, Eagle Aggregate, Suncoast Res, ATS Drilling, RECS, ANA, Alliance, Ram, JC Welding, Luis Moreno	\$5,526,017	25%	\$4,027,614	73%	\$42,022,337	100%
Oncor Electric		\$0	0%	\$0	0%	\$17,452	100%
BAR Constructors	Industry Junction, VSG Trucking, Ricochet, MMG Disposal, Garland HVAC, CMC Rebar, Buzz Custom Fence, K&A Steel, Rangle Land Surveying	\$1,404,576	11%	\$13,505,536	962%	\$13,505,536	100%
Valve Packages		\$0	0%	\$0	0%	\$13,957,412	98%
CONSTRUCTION MANAGEMENT		\$18,034,362	30%	\$21,465,138	119%	\$54,500,243	91%
Completed		\$5,928,654	38%	\$5,954,412	100%	\$15,747,553	100%
Active		\$12,105,707	28%	\$15,510,726	128%	\$38,752,690	88%
CONSTRUCTION MATERIALS TESTING		\$6,696,313	51%	\$5,500,989	82%	\$10,674,145	81%
Completed		\$219,036	97%	\$219,036	100%	\$225,132	100%
Active		\$6,477,277	50%	\$5,281,953	82%	\$10,449,013	81%
ROCIIP		\$900,712	2%	\$370,813	41%	\$23,117,815	55%
TOTAL		\$192,497,922	24%	\$265,730,512	138%	\$1,040,158,413	98%
LAND COST		\$0	0%	\$61,892	0%	\$78,532,928	187%
MISCELLANEOUS		\$0	0%	\$0	0%	\$3,903,305	5%
GRAND TOTAL		\$192,497,922	24%*	\$265,792,404	138%	\$1,122,594,647	98%

* Denotes participation percentage excluding cost of pipe and owner furnished equipment.

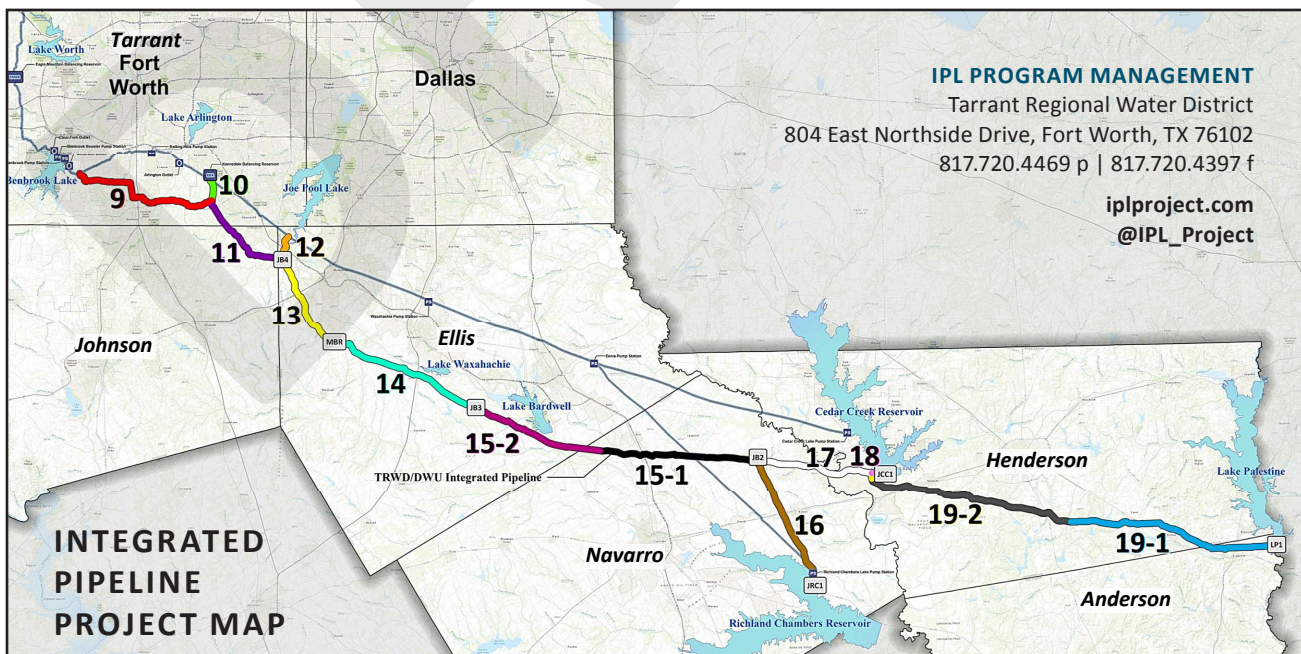
M/WBE/HUB Invoiced	\$265,792,404
Grand Total Invoiced	\$1,122,594,647
* Exclusions Invoiced	\$322,358,973
MWBE %	33.2%

PROJECT COMPONENTS

PIPELINE SEGMENTS	DESCRIPTION
Section 9	KBR Turn-Out Tee to existing Benbrook Connection Pipeline (10.6 mi. 84" dia. Pipe + 5 mi. 120" Tunnel)
Section 10	KBR Turn-Out Tee to KBR (2.4 mi. 84" dia. Pipe)
Section 11	JB4 to KBR Turn-Out Tee (10 mi. 84" dia. Pipe)
Section 12	JB4 to existing CC and RC Pipelines (2.2 mi. 108" dia. Pipe)
Section 13	MBR2 (Midlothian Balancing Reservoir) to JB4 (11 mi. 108" dia. Pipe)
Section 14	JB3 to MBR2 (Midlothian Balancing Reservoir) (14.9 mi. 108" dia. Pipe)
Section 15	JB2 to JB3 (28.5 mi 108" dia. Pipe)
Section 16	JRC1 (Joint Richland Chambers Lake Pump Station) to JB2 (12.3 mi. 96" dia. Pipe)
Section 17	Cedar Creek Connection to JB2 (11.2 mi. 108" dia. Pipe)
Section 18	JCC1 (Joint Cedar Creek Lake Pump Station) to Cedar Creek Connection (0.2 mi. 108" dia. Pipe)
Section 19	LP1 (Lake Palestine Pump Station) to Cedar Creek Connection (42.3 mi. 84" dia. Pipe)

PUMP STATIONS	DESCRIPTION
Palestine Pump Station	150 mgd with new intake
Cedar Creek Pump Station	277 mgd with new intake
Richland Chambers Pump Station	250 mgd Ultimate Design Capacity
Booster Pump Stations	Two @ 347 mgd and one @ 197 mgd (♦ one 347 mgd station - JB3)

SUPPORT FACILITIES	DESCRIPTION
Reservoirs	Three reservoirs (80 – 400 mgd) - two for booster pump stations and one for balancing. Two of the reservoirs are core projects – JB3R and MBR
Deep Tunnels	5 mi of 10' dia. tunnel @ Crowley (included in length of Section 9)
Substations & High Voltage Transmission Lines	Six substations and 4 mi. of high voltage transmission lines (♦ two substations)
Microwave Communications and SCADA System	Provides remote operations capability and system monitoring



Vendor Type	Business Name	For Credit
Prime	The University of Texas at Arlington	
Prime	Con-Real Support Group, Inc.	Yes
Prime	Lemley Consulting	
Prime	Willis of Texas Inc.	
Prime	The ConXsis Group, Inc	Yes
Prime	Halff Associates, Inc.	
Prime	Rockett Special Utility District	
Prime	Toeroek Associates, Inc.	Yes
Prime	Alliance Geotechnical Group, Inc.	Yes
Prime	Navarro County Electric Cooperative, Inc.	
Prime	Texas Christian University	
Prime	Hilco Electric Cooperative, Inc.	
Prime	ONCOR Eelectric Delivery Co.	
Prime	Alpha Testing, Inc.	
Prime	Huffman Communication	
Prime	Mas-Tek Engineering & Associates, Inc.	Yes
Prime	Pentair Valves & Controls US LP	
Prime	Lemley Consulting	
Prime	ONCOR Electric Delivery Co	
Prime	The University of Texas at Arlington	
Prime	BAR Constructors, Inc.	Yes
Prime	BAR Constructors, Inc.	Yes
Prime	Mas-Tek Engineering & Associates, Inc.	Yes
Prime	Steel Inspectors of Texas, Inc.	Yes
Prime	Toeroek Associates, Inc.	Yes
Prime	Shermco Industries, Inc.	
Prime	Plus Six Engineering, LLC	
Prime	BAR Constructors, Inc.	Yes
Prime	Alliance Geotechnical Group, Inc.	Yes
Prime	Hilco Electric Cooperative, Inc.	
Prime	Alliance Geotechnical Group, Inc.	Yes
Prime	Steel Inspectors of Texas, Inc.	Yes
Prime	BAR Constructors, Inc.	Yes
Prime	Mas-Tek Engineering & Associates, Inc.	Yes
Prime	Shermco Industries, Inc.	
Prime	BAR Constructors, Inc.	Yes
Prime	Plus Six Engineering, LLC	
Prime	Furgo Consultants, Inc.	
Prime	IPL Partners	
Subcontractor	Biogeo Solutions	
Subcontractor	Collier Consulting, Inc	Yes
Subcontractor	Geoscience Consultants International, LLC	

Subcontractor	IEA Inc.	Yes
Subcontractor	K.D. Jones Instrument Corporation	
Subcontractor	Texplor of Dallas, Inc.	Yes
Subcontractor	Precise Land Records	Yes
Subcontractor	Stateside Right of Way Services, LLC	Yes
Subcontractor	Toeroek Associates, Inc.	Yes
Subcontractor	W. Ware & Associates, Inc	Yes
Subcontractor	BDS Technologies, Inc.	Yes
Subcontractor	Integrated Environmental Solutions, LLC	Yes
Subcontractor	Nathan D. Maier Consulting Engineers, Inc.	Yes
Subcontractor	Walker Consultants Inc.	Yes
Subcontractor	Geo-Marine, Inc.	
Subcontractor	Talem, Inc.	
Subcontractor	The University of Texas at Arlington	
Subcontractor	Flowserve Corporation	
Subcontractor	Paar Consultants Inc	
Subcontractor	Gorronдона & Associates, Inc.	Yes
Subcontractor	Pacheco Koch Consulting Engineers, Inc	Yes
Subcontractor	Spooner & Associates, Inc.	Yes
Subcontractor	Lemley Consulting	
Subcontractor	JQ Infrastructure, LLC	Yes
Subcontractor	Bennett Benner Partners	
Subcontractor	Iconic Consulting Group, Inc.	Yes
Subcontractor	JQ Infrastructure, LLC	Yes
Subcontractor	Mas-Tek Engineering & Associates, Inc.	Yes
Subcontractor	Urban Engineers Group, Inc.	Yes
Subcontractor	Gorronдона & Associates, Inc.	Yes
Subcontractor	Ibarra Consulting Engineers, Inc	Yes
Subcontractor	Kevin Sloan Studio, LLC	Yes
Subcontractor	Open Channels Group, LLC	Yes
Subcontractor	BDS Technologies, Inc.	Yes
Subcontractor	JQ Infrastructure, LLC	Yes
Subcontractor	Texas Municipal Engineering, Inc.	Yes
Subcontractor	Plummer Associates, Inc.	
Subcontractor	Arredondo, Zepeda & Brunz, LLC	Yes
Subcontractor	Mas-Tek Engineering & Associates, Inc.	Yes
Subcontractor	Technical Associates Services, Inc	Yes
Subcontractor	Criado & Associates, Inc	Yes
Subcontractor	EPB Associates, Inc.	Yes
Subcontractor	Geoscience Consultants International, LLC	
Subcontractor	Jenny Engineering Corporation, Inc.	Yes
Subcontractor	Nathan D. Maier Consulting Engineers, Inc.	Yes
Subcontractor	Pacheco Koch Consulting Engineers, Inc	Yes
Subcontractor	Arredondo, Zepeda & Brunz, LLC	Yes
Subcontractor	Head Engineering Consultants Inc.	
Subcontractor	Jenny Engineering Corporation, Inc.	Yes
Subcontractor	Texas Municipal Engineering, Inc.	Yes

Subcontractor	Arredondo, Zepeda & Brunz, LLC	Yes
Subcontractor	Bennett Benner Partners	
Subcontractor	DAL-TECH Egeineering, Inc.	Yes
Subcontractor	Word Wizards	Yes
Subcontractor	IEA Inc.	Yes
Subcontractor	GM Enterprises	Yes
Subcontractor	Mbroh Engineering, Inc.	Yes
Subcontractor	Nathan D. Maier Consulting Engineers, Inc.	Yes
Subcontractor	Texplor of Dallas, Inc.	Yes
Subcontractor	EBG Engineering, LLC	Yes
Subcontractor	Flowserve Corporation	
Subcontractor	Jacobs Project Management Co.	
Subcontractor	Kennedy/Jenks Consultants	
Subcontractor	Parsons	
Subcontractor	PwrSolutions, Inc	
Subcontractor	Alphagraphics #83 (ML Holding, Inc)	Yes
Subcontractor	City Kitchen	
Subcontractor	Evolving Texas LP	Yes
Subcontractor	Williams & Hope Corporation	Yes
Subcontractor	Performance Award Center	Yes
Subcontractor	Pro-Ops Inc.	Yes
Subcontractor	QN Management Solutions, Inc.	Yes
Subcontractor	Shaffer Creative	
Subcontractor	Simply For You	Yes
Subcontractor	Sunray Customs	
Subcontractor	Toeroek Associates, Inc.	Yes
Subcontractor	W. Ware & Associates, Inc	Yes
Subcontractor	Williams & Hope Corporation	Yes
Subcontractor	Core Test	
Subcontractor	StrataBore, LLC	
Subcontractor	JQ Infrastructure, LLC	Yes
Subcontractor	Multatech Engineering, Inc.	Yes
Subcontractor	United States Right of Way Company, Inc.	Yes
Subcontractor	Robert F. McMahon	
Subcontractor	Gorrondona & Associates, Inc.	Yes
Subcontractor	Pacheco Koch Consulting Engineers, Inc	Yes
Subcontractor	Spooner & Associates, Inc.	Yes
Subcontractor	United States Right of Way Company, Inc.	Yes
Subcontractor	Arredondo, Zepeda & Brunz, LLC	Yes
Subcontractor	DAL-TECH Egeineering, Inc.	Yes
Subcontractor	Word Wizards	Yes
Subcontractor	Plummer Associates, Inc.	
Subcontractor	Arredondo, Zepeda & Brunz, LLC	Yes
Subcontractor	Mas-Tek Engineering & Associates, Inc.	Yes
Subcontractor	Technical Associates Services, Inc	Yes
Subcontractor	D&S Engineering	
Subcontractor	Texplor of Dallas, Inc.	Yes

Subcontractor	JQ Infrastructure, LLC	Yes
Subcontractor	Eagle Land Services Inc.	
Subcontractor	Ibarra Consulting Engineers, Inc	Yes
Subcontractor	Jenny Engineering Corporation, Inc.	
Subcontractor	Kevin Sloan Studio, LLC	Yes
Subcontractor	Open Channels Group, LLC	Yes
Subcontractor	Criado & Associates, Inc	Yes
Subcontractor	EPB Associates, Inc.	Yes
Subcontractor	Geoscience Consultants International, LLC	Yes
Subcontractor	Braun Intertec Corporation	
Subcontractor	Jenny Engineering Corporation, Inc.	
Subcontractor	Jenny Engineering Corporation, Inc.	Yes
Subcontractor	Nathan D. Maier Consulting Engineers, Inc.	Yes
Subcontractor	Pacheco Koch Consulting Engineers, Inc	Yes
Subcontractor	TLS Global Learning Solutions, Inc	Yes
Subcontractor	KRK Technolgies Inc	Yes
Subcontractor	The Rios Group, Inc.	Yes
Subcontractor	Arredondo, Zepeda & Brunz, LLC	Yes
Subcontractor	Bennett Benner Partners	
Subcontractor	DAL-TECH Engineering, Inc	Yes
Subcontractor	Word Wizards	Yes
Subcontractor	JQ Infrastructure, LLC	Yes
Subcontractor	Multatech Engineering, Inc.	Yes
Subcontractor	EBG Engineering, LLC	Yes
Subcontractor	Parsons	
Subcontractor	Evolving Texas LP	Yes
Subcontractor	Evolving Texas LP	
Subcontractor	Pro-Ops Inc.	Yes
Subcontractor	QN Management Solutions, Inc.	Yes
Subcontractor	Shaffer Creative	
Subcontractor	Toeroek Associates, Inc.	Yes
Subcontractor	W. Ware & Associates, Inc	Yes
Subcontractor	Williams & Hope Corporation	Yes
Subcontractor	Plummer Associates, Inc.	
Subcontractor	Azcarate & Associates Consulting Engineers, LLC	Yes
Subcontractor	JQ Infrastructure, LLC	Yes
Subcontractor	Malouf Engineerining Intl, Inc	
Subcontractor	BAR Constructors, Inc.	Yes
Subcontractor	Lamb-Star Engineering, LLC	Yes
Subcontractor	Geoscience Consultants International, LLC	
Subcontractor	Steel Inspectors of Texas, Inc.	Yes
Subcontractor	A.E.A. Transportation	Yes
Subcontractor	ACE Fence	
Subcontractor	AMS Company	Yes
Subcontractor	Guaranteed Hydromulch, LLC	Yes
Subcontractor	Buyers Barricades, Inc.	Yes
Subcontractor	Buzz Services, LLC	Yes

Subcontractor	Father & Son's Masonry & Stucco, Inc.	Yes
Subcontractor	Glenko Construction Products, LLC	Yes
Subcontractor	Gorronдона & Associates, Inc.	Yes
Subcontractor	Juan Cantu Welding, LLC	Yes
Subcontractor	KDAT, LLC	Yes
Subcontractor	Lindamood, Inc.	Yes
Subcontractor	LKT & Associates, LLC	Yes
Subcontractor	MRK Industrial Flooring, Inc.	Yes
Subcontractor	Northwest Pipe Company	
Subcontractor	Ricochet Fuel Distributors, Inc.	Yes
Subcontractor	S.Y.B. Construction Company, Inc	Yes
Subcontractor	SOTO'S Steel , Inc.	Yes
Subcontractor	Ted Cantu Construction, Inc.	Yes
Subcontractor	Shaffer Creative	Yes
Subcontractor	Williams & Hope Corporation	Yes
Subcontractor	BNSF Railway Company	
Subcontractor	Childress Engineers	
Subcontractor	Circle H Contractors Inc	
Subcontractor	Navarro County Electric Cooperative, Inc.	
Subcontractor	QFC Services, LLC	
Subcontractor	Texas Land Professionals	
Subcontractor	Evolving Texas LP	
Subcontractor	Project Management Controls Inc.	Yes
Subcontractor	Shaffer Creative	
Subcontractor	W. Ware & Associates, Inc	Yes
Subcontractor	Williams & Hope Inc.	Yes
Subcontractor	United States Right of Way Company, Inc.	Yes
Subcontractor	D.C.T. Trucking	Yes
Subcontractor	Desert Steel Co., Inc	Yes
Subcontractor	Edwards Construction Group, LLC	Yes
Subcontractor	Gorronдона & Associates, Inc.	Yes
Subcontractor	Henley-Johnston & Associates, Inc.	
Subcontractor	ModSpace	
Subcontractor	Reed Hydromulching, Inc	Yes
Subcontractor	Ricochet Fuel Distributors, Inc.	Yes
Subcontractor	Sargent's Extreme Electric	
Subcontractor	Statewide Trucking Corporation	Yes
Subcontractor	TSIT Engineering & Consulting, LLC	Yes
Subcontractor	U.S. Tren-Tech, LLC	
Subcontractor	Vulcan Materials Company	
Subcontractor	Lamb-Star Engineering, LLC	Yes
Subcontractor	Steel Inspectors of Texas, Inc.	Yes
Subcontractor	A.E.A. Transportation	Yes
Subcontractor	A.N.A. Consultants, LLC	Yes
Subcontractor	Barnsco	
Subcontractor	Buzz Services, LLC	Yes
Subcontractor	Cmc Construction Services	

Subcontractor	CRP Rebar Fabrication Specialists	
Subcontractor	Daniel Steel	
Subcontractor	DanRidge Construction, LLC.	Yes
Subcontractor	Edwards Construction Group, LLC	Yes
Subcontractor	Forterra Pressure Pipe Inc	
Subcontractor	G.L. Morris Enterprises Inc. / dba Sunbelt Industrial Service	Yes
Subcontractor	G.L. Morris Enterprises Inc. / dba Sunbelt Industrial Service	
Subcontractor	Glenko Construction Products, LLC	Yes
Subcontractor	Granados Trucking Inc	Yes
Subcontractor	Herdez Trucking Company, Inc	Yes
Subcontractor	Ingram Excavation, Inc.	
Subcontractor	LaFer & Associates, Inc.	
Subcontractor	LaFer & Associates, Inc.	Yes
Subcontractor	LKT & Associates, LLC	Yes
Subcontractor	LKT & Associates, LLC	
Subcontractor	Llano River Fence Company, LLC	Yes
Subcontractor	Northwest Pipe	
Subcontractor	Old Castle Products	
Subcontractor	Parrish-Hare Electrical Supply	
Subcontractor	Potere Construction LLC	Yes
Subcontractor	Premier Paving, LTD	Yes
Subcontractor	Prime Controls, L.P.	
Subcontractor	SB Fleet-Lube, LLC.	Yes
Subcontractor	TexSun	
Subcontractor	The Reynolds Co.	
Subcontractor	TS & G, LLC	
Subcontractor	West Texas Rebar Placers, Inc.	Yes
Subcontractor	Steel Inspectors of Texas, Inc.	Yes
Subcontractor	JQ Infrastructure, LLC	Yes
Subcontractor	Multatech Engineering, Inc.	Yes
Subcontractor	Buzz Services, LLC	Yes
Subcontractor	Potere Construction LLC	Yes
Subcontractor	PowerCare and Service Solutions, Inc	
Subcontractor	Ricochet Fuel Distributors, Inc.	Yes
Subcontractor	Sabre Corporation	
Subcontractor	SandS Surveying Corporation	Yes
Subcontractor	Steel Inspectors of Texas, Inc.	Yes
Subcontractor	A-Star Masonry and Stucco, LLC	Yes
Subcontractor	Accurate Advantage Group, Inc.	Yes
Subcontractor	BRJ Paving Incorporated	Yes
Subcontractor	Buzz Services, LLC	Yes
Subcontractor	C. Green Scaping, LP	Yes
Subcontractor	Champion Fuel Solutions	Yes
Subcontractor	Cowboy And Sons, LLC	Yes
Subcontractor	Elliot Electric	
Subcontractor	Engineered Computer Rooms, Inc	
Subcontractor	Forterra Pressure Pipe Inc.	

Subcontractor	Greystone Roofing, LLC	Yes
Subcontractor	Ike Painting & Construction Company, Inc.	Yes
Subcontractor	Infinity Contractors International, Ltd	
Subcontractor	LKT & Associates, LLC	Yes
Subcontractor	LKT & Associates, LLC	
Subcontractor	Prime Controls, L.P.	
Subcontractor	Read Architectural Products	
Subcontractor	SOTO'S Steel, Inc.	Yes
Subcontractor	Statewide Trucking Corporation	Yes
Subcontractor	Statewide Trucking Corporation	
Subcontractor	Arredondo, Zepeda & Brunz, LLC	Yes
Subcontractor	Jenny Engineering Corporation, Inc.	
Subcontractor	Texas Municipal Engineering, Inc.	Yes
Subcontractor	Brock Environmental Services, LLC	Yes
Subcontractor	Buyers Barricades, Inc.	Yes
Subcontractor	CRP Rebar Fabrication Specialists	
Subcontractor	DFW Aggregates, LLC	Yes
Subcontractor	Double D Fasteners	
Subcontractor	Ellis County road repairs	
Subcontractor	Greenscaping	Yes
Subcontractor	Juan Cantu Welding, LLC	Yes
Subcontractor	K&A Steel, LLC	Yes
Subcontractor	KDAT, LLC	Yes
Subcontractor	LKT & Associates, LLC	Yes
Subcontractor	LKT & Associates, LLC	
Subcontractor	Navarro County Electric Cooperative, Inc.	
Subcontractor	Northwest Pipe Company	
Subcontractor	Ricochet Fuel Distributors, Inc.	Yes
Subcontractor	Statewide Trucking Corporation	Yes
Subcontractor	Tidy Toilets Of Texas Inc	Yes
Subcontractor	VSG Trucking Services, LLC	Yes
Subcontractor	Steel Inspectors of Texas, Inc.	Yes
Subcontractor	HVJ North Texas - Chelliah Consultants, Inc.	Yes
Subcontractor	Nathan D. Maier Consulting Engineers, Inc.	Yes
Subcontractor	Brock Environmental Services, LLC	Yes
Subcontractor	Buzz Services, LLC	Yes
Subcontractor	Chas F Williams Company	
Subcontractor	DFW Aggregates, LLC	Yes
Subcontractor	Double D Fasteners	
Subcontractor	Ennis Steel Industries, Inc.	
Subcontractor	Garland Heating & Air Conditioning Company, Inc	Yes
Subcontractor	Greyston Roofing, LLC	Yes
Subcontractor	K&A Steel, LLC	Yes
Subcontractor	LKT & Associates, LLC	Yes
Subcontractor	MMG Building Services & Construction Services, LLC	Yes
Subcontractor	Mohr Separation Research, Inc	
Subcontractor	Municipal Valve	

Subcontractor	Q. Roberts Trucking Incorporated	Yes
Subcontractor	Ricochet Fuel Distributors, Inc.	Yes
Subcontractor	Scott's Welding	
Subcontractor	Spaeth Machine Service	
Subcontractor	Void Form Products, Inc.	
Subcontractor	VSG Trucking Services, LLC	Yes
Subcontractor	Daniel Steel	
Subcontractor	DynaGrid Construction Group, LLC	Yes
Subcontractor	A.E.A. Transportation	Yes
Subcontractor	BG Williams	
Subcontractor	G.L. Morris Enterprises Inc. / dba Sunbelt Industrial Service	Yes
Subcontractor	Gorrondona & Associates, Inc.	Yes
Subcontractor	Hilco Electric Cooperatve, Inc.	
Subcontractor	Juan Cantu Welding, LLC	Yes
Subcontractor	LaFer & Associates, Inc.	Yes
Subcontractor	LKT & Associates, LLC	Yes
Subcontractor	Navarro County Electric Cooperative, Inc.	
Subcontractor	Northwest Pipe	
Subcontractor	ONCOR Electric Delivery Company	
Subcontractor	SB Fleet-Lube, LLC.	Yes
Subcontractor	Statewide Trucking Corporation	Yes
Subcontractor	Steel Inspectors of Texas, Inc.	Yes
Subcontractor	Steel Inspectors of Texas, Inc.	Yes
Subcontractor	Lamb-Star Engineering, LLC	Yes
Subcontractor	Project Management Controls Inc.	Yes
Subcontractor	Shaffer Creative, LLC	Yes
Subcontractor	Williams & Hope Corporation	Yes
Subcontractor	Robert Half Finance & Accounting	
Subcontractor	Shaffer Creative	
Subcontractor	W. Ware & Associates, Inc	Yes
Subcontractor	Williams & Hope Corporation	Yes
Subcontractor	LekhaTax LLC	Yes
Subcontractor	JQ Infrastructure, LLC	Yes
Subcontractor	A.N.A. Consultants, LLC	Yes
Subcontractor	Alliance Geotechnical Group, Inc.	Yes
Subcontractor	ATS Drilling, Inc	Yes
Subcontractor	Brock Environmental Services, LLC	Yes
Subcontractor	Buyers Barricades, Inc.	Yes
Subcontractor	Champion Fuel Solutions	Yes
Subcontractor	Eagle Aggregate Transportation, LLC	Yes
Subcontractor	Forterra Pipe & Precast Ilc	
Subcontractor	Industry Junction, Inc.	Yes
Subcontractor	Juan Cantu Welding, LLC	Yes
Subcontractor	LaFer & Associates, Inc.	Yes
Subcontractor	LKT & Associates, LLC	Yes
Subcontractor	Luis Moreno Trucking	Yes
Subcontractor	RECS, Inc	Yes

Subcontractor	Brock Environmental Services, LLC	Yes
Subcontractor	Buzz Services, LLC	Yes
Subcontractor	Cmc Construction Services	
Subcontractor	Cohn & Gregory Inc	
Subcontractor	Forterra Pipe & Precast Ilc	
Subcontractor	Industry Junction, Inc.	Yes
Subcontractor	K&A Steel, LLC	Yes
Subcontractor	LaFer & Associates, Inc.	Yes
Subcontractor	Ricochet Fuel Distributors, Inc.	Yes
Subcontractor	Tidy Toilets Of Texas Inc	Yes
Subcontractor	VSG Trucking Services, LLC	Yes
Subcontractor	JQ Infrastructure, LLC	Yes
Subcontractor	Multatech Engineering, Inc.	Yes
Subcontractor	Buyers Barricades, Inc.	Yes
Subcontractor	Eagle Aggregate Transportation, LLC	Yes
Subcontractor	Industry Junction, Inc.	Yes
Subcontractor	Juan Cantu Welding, LLC	Yes
Subcontractor	LKT & Associates, LLC	Yes
Subcontractor	Luis Moreno Trucking	Yes
Subcontractor	Northwest Pipe Company	
Subcontractor	Texas Design Professionals, LLC	Yes
Subcontractor	Forterra Pressure Pipe Inc	
Subcontractor	Herdez Trucking Company, Inc	Yes
Subcontractor	Industry Junction, Inc.	Yes
Subcontractor	SB Fleet-Lube, LLC.	Yes
Subcontractor	Brock Environmental Services, LLC	Yes
Subcontractor	Buzz Services, LLC	Yes
Subcontractor	CMC Rebar	
Subcontractor	Dobbs Coating Systems	
Subcontractor	Garland Heating & Air Conditioning Company, Inc	Yes
Subcontractor	H & H Electrical Contractors	
Subcontractor	Industry Junction, Inc.	Yes
Subcontractor	K&A Steel, LLC	Yes
Subcontractor	MMG Building Services & Construction Services, LLC	Yes
Subcontractor	Peachtree Construction	
Subcontractor	Read Architectural Products	
Subcontractor	Redi Mix Concrete	
Subcontractor	Rental One	
Subcontractor	Ricochet Fuel Distributors, Inc.	Yes
Subcontractor	Tyson Building Corporation	
Subcontractor	VSG Trucking Services, LLC	Yes
Subcontractor	BAR Constructors, Inc.	Yes
Subcontractor	Buzz Services, LLC	Yes
Subcontractor	Nathan D. Maier Consulting Engineers, Inc.	Yes
Subcontractor	A-Star Masonry and Stucco, LLC	Yes
Subcontractor	Industry Junction, Inc.	Yes
Subcontractor	Industry Junction, Inc.	Yes

Subcontractor	LaFer & Associates, Inc.	Yes
Subcontractor	LKT & Associates, LLC	Yes
Subcontractor	McCarthy Wild Services, Inc	Yes
Subcontractor	Ricochet Fuel Distributors, Inc.	Yes
Subcontractor	Triton Supply, Inc.	Yes
Subcontractor	VSG Trucking Services, LLC	Yes
Subcontractor	Steel Inspectors of Texas, Inc.	Yes
Subcontractor	Lamb-Star Engineering, LLC	Yes
Subcontractor	Williams & Hope Corporation	Yes
Subcontractor	LekhaTax LLC	Yes
Subcontractor	Buyers Barricades, Inc.	Yes
Subcontractor	Champion Fuel Solutions	Yes
Subcontractor	Industry Junction, Inc.	Yes
Subcontractor	J Rueda's Trucking LLC	Yes
Subcontractor	Juan Cantu Welding, LLC	Yes
Subcontractor	Ram Tool Construction Supply	Yes
Subcontractor	RECS, Inc	Yes
Subcontractor	JQ Infrastructure, LLC	Yes
Subcontractor	Shaffer Creative, LLC	Yes
Subcontractor	Williams & Hope Corporation	Yes
Subcontractor	BIOGEO SOLUTIONS	
Subcontractor	Collier Consulting, Inc	Yes
Subcontractor	Geoscience Consultants International, LLC	
Subcontractor	IEA Inc.	Yes
Subcontractor	Steel Inspectors of Texas, Inc.	Yes
Subcontractor	Texplor of Dallas, Inc.	Yes
Subcontractor	University of Texas Arlington	
Subcontractor	Word Wizards	Yes
Subcontractor	Steel Inspectors of Texas, Inc.	Yes
Subcontractor	BDS Technologies, Inc.	Yes
Subcontractor	JQ Infrastructure, LLC	Yes
Subcontractor	Studio Tincup, LLC	Yes
Subcontractor	Texas Design Professionals, LLC	Yes
Subcontractor	Texas Municipal Engineering, Inc.	Yes
Subcontractor	JQ Infrastructure, LLC	Yes
Subcontractor	Texas Design Professionals, LLC	Yes
Subcontractor	Texas Municipal Engineering, Inc.	Yes
Subcontractor	Alliance Geotechnical Group, Inc.	Yes
Subcontractor	Azcarate & Associates Consulting Engineers, LLC	Yes
Subcontractor	Bennett Benner Partners	
Subcontractor	CHEM-AQUA INC	
Subcontractor	JQ Infrastructure, LLC	Yes
Subcontractor	Mas-Tek Engineering & Associates, Inc.	Yes
Subcontractor	Signature Automation LLC	Yes
Subcontractor	Urban Engineers Group, Inc.	Yes
Subcontractor	GM Enterprises	Yes
Subcontractor	Mbroh Engineering, Inc.	Yes

Subcontractor	Nathan D. Maier Consulting Engineers, Inc.	Yes
Subcontractor	Texplor of Dallas, Inc.	Yes
Subcontractor	Alliance Geotechnical Group, Inc.	Yes
Subcontractor	Arredondo, Zepeda & Brunz, LLC	Yes
Subcontractor	Mas-Tek Engineering & Associates, Inc.	Yes
Subcontractor	Technical Associates Services, Inc	Yes
Subcontractor	Alliance Geotechnical Group, Inc.	Yes
Subcontractor	Arredondo, Zepeda & Brunz, LLC	Yes
Subcontractor	Technical Associates Services, Inc	Yes
Subcontractor	BDS Technologies, Inc.	Yes
Subcontractor	JQ Infrastructure, LLC	Yes
Subcontractor	Texas Design Professionals, LLC	Yes
Subcontractor	BDS Technologies, Inc.	Yes
Subcontractor	JQ Infrastructure, LLC	Yes
Subcontractor	Texas Design Professionals, LLC	Yes
Subcontractor	Kevin Sloan Studio, LLC	Yes
Total		

Participation Report Dec.2021

HUB	Payment Share For Credit	City	State	Zip
No	\$0	Arlington	TX	76019
No	\$61,892	Grand Praire	TX	75050
No	\$0	Mineral Wells	TX	76067
No	\$0	Addison	TX	75001
No	\$16,052	Carrollton	TX	75007
No	\$0	Richardson	TX	75081
No	\$0	Waxahachie	TX	75165
No	\$3,550,206	Fort Worth	TX	76102
Yes	\$194,083	Dallas	TX	75247
No	\$0	Corsicana	TX	75151
No	\$0	Fort Worth	TX	76121
No	\$0	Midlothian,	TX	76065
No	\$0	Dallas	TX	75202
No	\$0	Dallas	TX	75229
No	\$0	Corsicana	TX	75151
Yes	\$20,828	Dallas	TX	75220
	\$0	Dallas	TX	75312
No	\$0	Mineral Wells	TX	76067
No	\$0	Dallas	TX	75202
No	\$0	Arlington	TX	76019
No	\$15,847,809	Lancaster	TX	75146
No	\$4,886,152	Lancaster	TX	75146
Yes	\$56,968	Dallas	TX	75220
Yes	\$788,051	Fort Worth	TX	76108
No	\$2,989,616	Fort Worth	TX	76102
	\$0	Irving	TX	75061
	\$0	Grapevine	TX	76051
No	\$16,978,363	Lancaster	TX	75146
Yes	\$386,639	Dallas	TX	75247
	\$0	Midlothian,	TX	76065
Yes	\$363,720	Dallas	TX	75247
Yes	\$166,228	Fort Worth	TX	76108
No	\$13,051,112	Lancaster	TX	75146
Yes	\$20,828	Dallas	TX	75220
	\$0	Irving	TX	75061
	\$49,962,020	Lancaster	TX	75146
	\$0	Grapevine	TX	76051
	\$0	Dallas	TX	75229
	\$0	Roanoke	TX	76262
No	\$0	Dallas	TX	75243
Yes	\$585,926	Stephenville	TX	76401
No	\$0	Cedar Hill	TX	75104

Yes	\$1,434,811	Dallas	TX	75252
No	\$0	Normangee	TX	77871
Yes	\$24,053	Dallas	TX	75379
No	\$10,750	Grand Praire	TX	75054
Yes	\$5,851	Dallas	TX	75240
No	\$9,694	Fort Worth	TX	76102
Yes	\$149,678	Fort Worth	TX	76120
No	\$119,093	Dallas	TX	75238
Yes	\$390,058	McKinney	TX	75069
Yes	\$61,152	Dallas	TX	75251
Yes	\$159,635	Dallas	TX	75206
No	\$0	Plano	TX	75074
No	\$0	Fort Worth	TX	76104
No	\$0	Arlington	TX	76019
No	\$0	Dallas	TX	75207
No	\$0	Southlake	TX	76092
Yes	\$862,875	Fort Worth	TX	76137
Yes	\$388,185	Dallas	TX	75231
Yes	\$51,757	Eeless	TX	76039
No	\$0	Mineral Wells	TX	76067
Yes	\$437,845	Dallas	TX	75207
No	\$0	Fort Worth	TX	76102
Yes	\$82,059	Dallas	TX	75234
Yes	\$623,417	Dallas	TX	75207
Yes	\$47,580	Dalals	TX	75220
No	\$430,613	Dallas	TX	75207
Yes	\$0	Fort Worth	TX	76137
Yes	\$288,985	Dallas	TX	75205
No	\$63,362	Dallas	TX	75235
Yes	\$22,179	Fort Worth	TX	76110
No	\$44,908	Dallas	TX	75238
Yes	\$179,272	Dallas	TX	75207
No	\$190,098	Dallas	TX	75248
No	\$0	FORT WORTH	TX	76107
Yes	\$195,143	Dallas	TX	75238
Yes	\$48,325	Dallas	TX	75220
No	\$260,637	Dallas	TX	75240
Yes	\$237,124	Dallas	TX	75244
Yes	\$179,527	Dallas	TX	75254
	\$0	Cedar Hill	TX	75104
No	\$13,801	Dallas	TX	75207
Yes	\$311,010	Dallas	TX	75251
Yes	\$129,289	Dallas	TX	75231
Yes	\$644,410	Dallas	TX	75238
No	\$0	Bolivar	TX	76266
No	\$6,994	Dallas	TX	75207
No	\$135,719	Dallas	TX	75248

Yes	\$236,129	Dallas	TX	75238
No	\$0	Fort Worth	TX	76102
Yes	\$56,950	Dallas	TX	75287
Yes	\$29,801	Dallas	TX	75230
Yes	\$28,052	Dallas	TX	75252
No	\$87,938	Kennedale	TX	76060
Yes	\$85,923	Dallas	TX	75240
Yes	\$691,266	Dallas	TX	75251
Yes	\$73,186	Dallas	TX	75379
Yes	\$1,589,678	Dallas	TX	75357
No	\$0	Dallas	TX	75207
No	\$0	Dallas	TX	75201
No	\$0	Dallas	TX	75201
No	\$0	Richardson	TX	75080
No	\$0	Dallas	TX	75207
No	\$6,706	Fort Worth	TX	76107
No	\$0	Fort Worth	TX	76105
Yes	\$607,249	Fort Worth	TX	76102
No	\$6,252	Mansfield	TX	76063
No	\$2,504	Carrollton	TX	75006
No	\$476,693	Dallas	TX	75207
Yes	\$45,900	Dallas	TX	75248
No	\$0	Keller	TX	76244
No	\$11,574	Fort Worth	TX	76105
No	\$0	Keller	TX	76248
No	\$1,077,692	Fort Worth	TX	76102
Yes	\$389,967	Fort Worth	TX	76120
No	\$160,408	Mansfield	TX	76063
No	\$0	DFW Airport	TX	75261
No	\$0	Dallas	TX	75229
Yes	\$56,690	Dallas	TX	75207
Yes	\$93,967	Fort Worth	TX	76107
Yes	\$26,762	Lewisville	TX	75057
No	\$0	Arlington	TX	76017
Yes	\$793,709	Fort Worth	TX	76137
Yes	\$258,783	Dallas	TX	75231
Yes	\$43,531	Euless	TX	76039
Yes	\$234,553	Lewisville	TX	75057
Yes	\$36,683	Dallas	TX	75238
Yes	\$66,906	Dallas	TX	75287
Yes	\$23,759	Dallas	TX	75230
No	\$0	Fort Worth	TX	76107
Yes	\$510,758	Dallas	TX	75238
Yes	\$233,303	Dallas	TX	75220
No	\$437,976	Dallas	TX	75240
No	\$0	Fort Worth	TX	76137
Yes	\$20,096	Dallas	TX	75379

Yes	\$1,808,345	Dallas	TX	75207
No	\$0	Colleyville	TX	76034
Yes	\$1,021,482	Dallas	TX	75205
No	\$0	Dallas	TX	75207
No	\$61,229	Dallas	TX	75235
Yes	\$0	Fort Worth	TX	76110
Yes	\$605,679	Dallas	TX	75244
Yes	\$758,924	Dallas	TX	75254
	\$282,572	Cedar Hill	TX	75104
	\$0	Dallas	TX	75261
No	\$0	Dallas	TX	75207
No	\$30,958	Dallas	TX	75207
Yes	\$339,791	Dallas	TX	75251
Yes	\$211,442	Dallas	TX	75231
No	\$93,500	Plano	TX	75025
Yes	\$8,935	Cedar Hill	TX	75104
Yes	\$156,058	Fort Worth	TX	76118
Yes	\$600,027	Dallas	TX	75238
No	\$0	Fort Worth	TX	76102
Yes	\$481,517	Dallas	TX	75287
Yes	\$10,445	Dallas	TX	75230
Yes	\$78,633	Dallas	TX	75207
Yes	\$138,060	Fort Worth	TX	76107
Yes	\$221,949	Dallas	TX	75357
No	\$0	Richardson	TX	75080
Yes	\$104,657	Fort Worth	TX	76102
No	\$0	Fort Worth	TX	76102
No	\$29,958	Dallas	TX	75207
Yes	\$33,128	Dallas	TX	75248
No	\$0	Keller	TX	76244
No	\$489,857	Fort Worth	TX	76102
Yes	\$192,620	Fort Worth	TX	76120
No	\$165,029	Mansfield	TX	76063
No	\$0	Fort Worth	TX	76107
Yes	\$69,851	Dallas	TX	75254
Yes	\$322,860	Dallas	TX	75207
No	\$0	Dallas	TX	75252
No	\$1,354,402	Lancaster	TX	75146
Yes	\$10,839	Plano	TX	75093
	\$0	Cedar Hill	TX	75104
Yes	\$107,453	Fort Worth	TX	76108
No	\$350,504	Grand Prairie	TX	75050
No	\$0	Burleson	TX	42626
No	\$546,649	Cleburne	TX	76033
Yes	\$280,719	Rhome	TX	76078
Yes	\$16,274	Richland Hills	TX	76116
No	\$1,900	Fort Worth	TX	76185

No	\$42,900	Dallas	TX	75253
No	\$66,182	Seagoville	TX	75159
Yes	\$153,216	Fort Worth	TX	76137
Yes	\$894,934	Rockwall	TX	75032
No	\$515,485	Arlington	TX	76006
Yes	\$58,870	Irving	TX	75060
Yes	\$2,153,276	Melissa	TX	75454
No	\$48,159	Lantana	TX	76226
No	\$0	Dallas	TX	75284
No	\$1,289,556	Eules	TX	76040
Yes	\$33,431	Irving	TX	75061
Yes	\$30,065	Dallas	TX	75208
No	\$18,347	Eules	TX	76040
	\$0	Keller	TX	76244
	\$0	Mansfield	TX	76063
No	\$0	Fort Worth	TX	76161
No	\$0	Cleburne	TX	76033
No	\$0	Midlothian	TX	76065
No	\$0	Corsicana	TX	75151
No	\$0	Weatherford	TX	76087
No	\$0	Royce City	TX	75189
	\$0	Fort Worth	TX	76102
No	\$1,282,276	Fort Worth	TX	76179
No	\$0	Keller	TX	76244
Yes	\$422,675	Fort Worth	TX	76120
No	\$547,745	Mansfield	TX	76063
Yes	\$236,313	Lewisville	TX	75057
No	\$2,899	Fort Worth	TX	76147
Yes	\$736,859	Irving	TX	75061
Yes	\$29,145	Forth Worth	TX	76135
Yes	\$31,438	Fort Worth	TX	76137
No	\$0	Dallas	TX	75203
No	\$0	Irving	TX	75038
No	\$119,331	Burleson	TX	76028
Yes	\$361,275	Eules	TX	76040
No	\$0	Midlothian	TX	76065
Yes	\$172,392	Fate	TX	75132
Yes	\$81,638	Richland Hills	TX	76118
No	\$0	Dalla	TX	77844
No	\$0	Ft Worth	TX	76107
Yes	\$77,739	Plano	TX	75093
Yes	\$11,620	Fort Worth	TX	76108
No	\$18,124	Grand Prairie	TX	75050
Yes	\$132,721	Colleville	TX	76034
No	\$0	Dallas	TX	75220
No	\$348,349	Fort Worth	TX	76185
No	\$0	Dallas	TX	75267

No	\$0	Cleburne	TX	76031
No	\$0	DFW Airport	TX	75261
No	\$993,011	Cedar Hill	TX	75104
Yes	\$425,835	Fort Worth	TX	76135
No	\$0	Dallas	TX	75284
Yes	\$4,284,013	Fort Worth	TX	76107
No	\$0	Fort Worth	TX	76107
No	\$0	Seagoville	TX	75159
No	\$0	Fort Worth	TX	76135
No	\$3,212,249	Dallas	TX	75217
No	\$0	Cleburne	TX	76031
Yes	\$0	Dallas	TX	75238
Yes	\$1,035,850	Dallas	TX	75238
Yes	\$1,985,410	Melissa	TX	75454
No	\$0	Melissa	TX	75454
Yes	\$317,271	Balch Spring	TX	75186
No	\$0	Dallas	TX	75207
No	\$0	DFW Airport	TX	75261
No	\$0	Dallas	TX	75247
Yes	\$0	Forth Worth	TX	76120
Yes	\$59,528	Forth Worth	TX	76177
No	\$0	Lewisville	TX	75057
No	\$2,874,917	Celina	TX	75009
No	\$0	Dallas	TX	75207
No	\$0	DFW Airport	TX	75261
Yes	\$0	Alvarado	TX	76009
Yes	\$762,310	Dallas	TX	75238
Yes	\$161,703	Fort Worth	TX	76108
Yes	\$11,776	Dallas	TX	75207
Yes	\$23,789	Fort Worth	TX	76107
No	\$190,185	Fort Worth	TX	76185
Yes	\$656,409	Forth Worth	TX	76120
No	\$0	Dallas	TX	75238
No	\$13,299	Eules	TX	76040
No	\$0	Southlake	TX	76092
Yes	\$10,335	Dallas	TX	75220
Yes	\$36,323	Fort Worth	TX	76108
Yes	\$42,550	Balch Springs	TX	75180
Yes	\$952,102	Dallas	TX	75240
Yes	\$909,421	Burleson	TX	76028
No	\$780,793	Fort Worth	TX	76185
Yes	\$0	Fort Worth	TX	76118
Yes	\$293,599	Colleyville	TX	76034
No	\$114,963	Dallas	TX	75236
No	\$0	Farmers Branch	TX	75234
No	\$0	Dallas	TX	75243
No	\$0	Dallas	TX	75284

Yes	\$0	Krugerville	TX	76227
No	\$0	Garland	TX	75043
No	\$0	Fort Worth	TX	76118
Yes	\$1,893,547	Melissa	TX	75454
No	\$0	Melissa	TX	75454
No	\$0	Lewisville	TX	75057
No	\$0	DFW Airport	TX	75261
Yes	\$291,098	Dallas	TX	75208
Yes	\$1,810,205	Fate	TX	75132
No	\$0	Fate	TX	75132
Yes	\$635,869	Dallas	TX	75238
No	\$0	Dallas	TX	75207
No	\$170,805	Dallas	TX	75248
No	\$7,471	Rockwall	TX	75032
Yes	\$7,548	Richland Hills	TX	76116
No	\$0	Cleburne	TX	76031
Yes	\$466,678	Dallas	TX	75217
No	\$0	DFW Airport	TX	75261
No	\$0	Waxahachie	TX	75168
No	\$341,388	Dallas	TX	75207
Yes	\$552,995	Rockwall	TX	75032
No	\$11,708	Dallas	TX	75224
No	\$214,847	Arlington	TX	76006
Yes	\$1,194,256	Melissa	TX	75454
No	\$0	Melissa	TX	75454
No	\$0	Corsicana	TX	75151
No	\$0	Dallas	TX	75284
No	\$1,014,738	Euess	TX	76040
Yes	\$1,042,702	Fate	TX	75132
Yes	\$33,940	Mabank	TX	75147
Yes	\$43,345	Keller	TX	76244
Yes	\$161,318	Fort Worth	TX	76108
Yes	\$2,238	Dallas	TX	75247
Yes	\$486,259	Dallas	TX	75251
No	\$0	Rockwall	TX	75032
No	\$310,427	Fort Worth	TX	76185
No	\$0	Fort Worth	TX	76104
Yes	\$23,132	Dallas	TX	75217
No	\$0	DFW Airport	TX	75261
No	\$0	Ennis	TX	75119
Yes	\$30,547	Garland	TX	75041
Yes	\$0	Krugerville	TX	76227
No	\$34,313	Dallas	TX	75224
Yes	\$122,809	Melissa	TX	75454
No	\$6,868	Forest Hill	TX	76119
No	\$0	Lewisville	TX	75077
No	\$0	DFW Airport	TX	75261

Yes	\$75,130	Dallas	TX	75237
No	\$150,486	Euless	TX	76040
No	\$0	Red Oak	TX	75154
No	\$0	Dallas	TX	75356
No	\$0	Fort Worth	TX	76119
No	\$58,637	Keller	TX	76244
No	\$0	DFW Airport	TX	75261
Yes	\$1,449,920	Lewisville	TX	75057
No	\$123,411	Grand Prairie	TX	75050
No	\$0	Dallas	TX	75207
Yes	\$322,321	Fort Worth	TX	76107
Yes	\$168,360	Fort Worth	TX	76137
No	\$0	Midlothian,	TX	76065
Yes	\$940,830	Rockwall	TX	75032
Yes	\$375,000	Dallas	TX	75238
Yes	\$1,562,392	Melissa	TX	75454
No	\$0	Corsicana	TX	75151
No	\$0	Dallas	TX	75207
No	\$0	Dallas	TX	75202
No	\$840,794	Celina	TX	75009
No	\$1,519,604	Fate	TX	75132
Yes	\$36,269	Fort Worth	TX	76108
Yes	\$0	Fort Worth	TX	76108
Yes	\$32,920	Plano	TX	75093
No	\$715,609	Fort Worth	TX	76179
	\$2,970	Granbury	TX	76049
	\$413,915	Mansfield	TX	76063
No	\$0	Dallas	TX	75201
No	\$0	Keller	TX	76244
Yes	\$527,802	Fort Worth	TX	76120
No	\$574,216	Mansfield	TX	76063
	\$705,211	Coppell	TX	75019
Yes	\$864,827	Dallas	TX	75207
Yes	\$52,575	Colleville	TX	76034
Yes	\$0	Dallas	TX	75247
No	\$0	Fort Worth	TX	76117
No	\$0	Rockwall	TX	75032
Yes	\$15,763	Richland Hills	TX	76116
	\$14,260	Colleyville	TX	76034
No	\$0	Fort Worth	TX	76177
No	\$0	Dallas	TX	76161
Yes	\$2,128,893	Garland	TX	75041
Yes	\$123,190	Rockwall	TX	75032
Yes	\$62,265	Dallas	TX	75238
Yes	\$159,273	Melissa	TX	75454
No	\$0	Fort Worth	TX	76119
Yes	\$430,800	Prosper	TX	75078

No	\$750	Rockwall	TX	75032
No	\$0	Fort Worth	TX	76185
No	\$0	Dallas	TX	75267
No	\$0	Fort Worth	TX	76111
No	\$0	Dallas	TX	76161
Yes	\$440,452	Garland	TX	75041
No	\$263,160	Dallas	TX	75224
Yes	\$50,000	Dallas	TX	75238
Yes	\$235,738	Euless	TX	76040
Yes	\$7,142	Mabank	TX	75147
No	\$18,657	Keller	TX	76244
	\$43,935	DALLAS	TX	75207
	\$0	Fort Worth	TX	76107
Yes	\$11,820	Richland Hills	TX	76116
No	\$808,371	Fort Worth	TX	76177
Yes	\$408,875	Garland	TX	75041
Yes	\$131,709	Rockwall	TX	75032
Yes	\$1,551,981	Melissa	TX	75454
No	\$676,350	Fort Worth	TX	76119
No	\$0	Saginaw	TX	76179
No	\$2,100	Dallas	TX	75254
No	\$0	Dallas	TX	75284
Yes	\$90,925	Dallas	TX	75217
Yes	\$0	Garland	TX	75041
No	\$832,520	Celina	TX	75009
No	\$0	Rockwall	TX	75032
No	\$189,590	Fort Worth	TX	76185
No	\$0	Irving	TX	75039
No	\$0	Weatherford	TX	76088
Yes	\$14,594	Garland	TX	75041
No	\$0	Terrell	TX	75160
Yes	\$61,133	Garland	TX	75041
No	\$32,900	Dallas	TX	75224
No	\$0	Forest Hill	TX	76119
No	\$0	DFW Airport	TX	75261
No	\$0	DFW Airport	TX	75261
No	\$0	Euless	TX	76040
No	\$0	Haltom City	TX	76117
Yes	\$134,278	Euless	TX	76040
No	\$0	Fort Worth	TX	76116
No	\$20,609	Keller	TX	76244
	\$887,152	Lancaster	TX	75146
Yes	\$36,963	Fort Worth	TX	76185
Yes	\$337,493	Dallas	TX	75251
	\$59,480	Balch Springs	TX	75180
	\$2,179,760	Garland	TX	75041
	\$608,640	Garland	TX	75041

	\$3,956,364	Dallas	TX	75238
	\$772,240	Melissa	TX	75454
	\$91,739	Fort Worth	TX	76140
	\$277,545	Euless	TX	76040
	\$1,891,666	Arlington	TX	76011
	\$77,048	Keller	TX	76244
	\$4,500	Fort Worth	TX	76108
	\$36,509	Plano	TX	75093
	\$30,754	Mansfield	TX	76063
	\$398,710	Coppell	TX	75019
	\$0	Richland Hills	TX	76116
	\$11,634	Colleyville	TX	76034
	\$61,298	Garland	TX	75041
	\$0	Dallas	TX	75217
	\$0	Rockwall	TX	75032
	\$0	Fort Worth	TX	76102
	\$0	Prosper	TX	75078
	\$64,730	Dallas	TX	75207
	\$228	Granbury	TX	76049
	\$60,588	Mansfield	TX	76063
No	\$0	Dallas	TX	75243
Yes	\$286,072	Stephenville	TX	76401
No	\$0	Cedar Hill	TX	75104
Yes	\$918,974	Dallas	TX	75252
Yes	\$0	Fort Worth	TX	76108
Yes	\$263,498	Dallas	TX	75379
No	\$0	DFW Airport	TX	75261
Yes	\$10,621	Dallas	TX	75230
Yes	\$4,128	Fort Worth	TX	76108
No	\$616,686	Dallas	TX	75238
Yes	\$1,067,181	Dallas	TX	75207
No	\$8,500	Arlington	TX	76013
No	\$0	Dallas	TX	75254
No	\$260,912	Dallas	TX	75248
Yes	\$131,736	Dallas	TX	75207
No	\$36,892	Dallas	TX	75254
No	\$36,443	Dallas	TX	75248
	\$8,429	Dallas	TX	75247
Yes	\$14,990	Dallas	TX	75254
No	\$0	Fort Worth	TX	76102
	\$0	Dallas	TX	75397
Yes	\$1,774,954	Dallas	TX	75207
Yes	\$64,198	Dallas	TX	75220
No	\$68,817	Addison	TX	75001
No	\$1,081,378	Dallas	TX	75207
No	\$12,720	Kennedale	TX	76060
Yes	\$512,256	Dallas	TX	75240

Yes	\$1,479,024	Dallas	TX	75251
Yes	\$18,205	Dallas	TX	75379
Yes	\$0	Dallas	TX	75247
Yes	\$82,305	Dallas	TX	75238
Yes	\$11,958	Dallas	TX	75220
No	\$42,603	Dallas	TX	75240
Yes	\$78,362	Dallas	TX	75247
Yes	\$22,502	Dallas	TX	75238
No	\$36,448	Dallas	TX	75240
No	\$28,418	Dallas	TX	75238
	\$5,953	Dallas	TX	75207
No	\$0	Dallas	TX	75254
No	\$32,591	Dallas	TX	75238
Yes	\$1,069	Dallas	TX	75207
Yes	\$28,408	Dallas	TX	75254
No	\$10,746	Dallas	TX	75235
	\$ 220,007,874.00			