

Applicable Urban Design Priorities Project Should Achieve

DATE: 06.28.19

TIME: 8:30am

PROJECT: Circuit Trail: Trinity Strand Trail – Katy Trail Connector

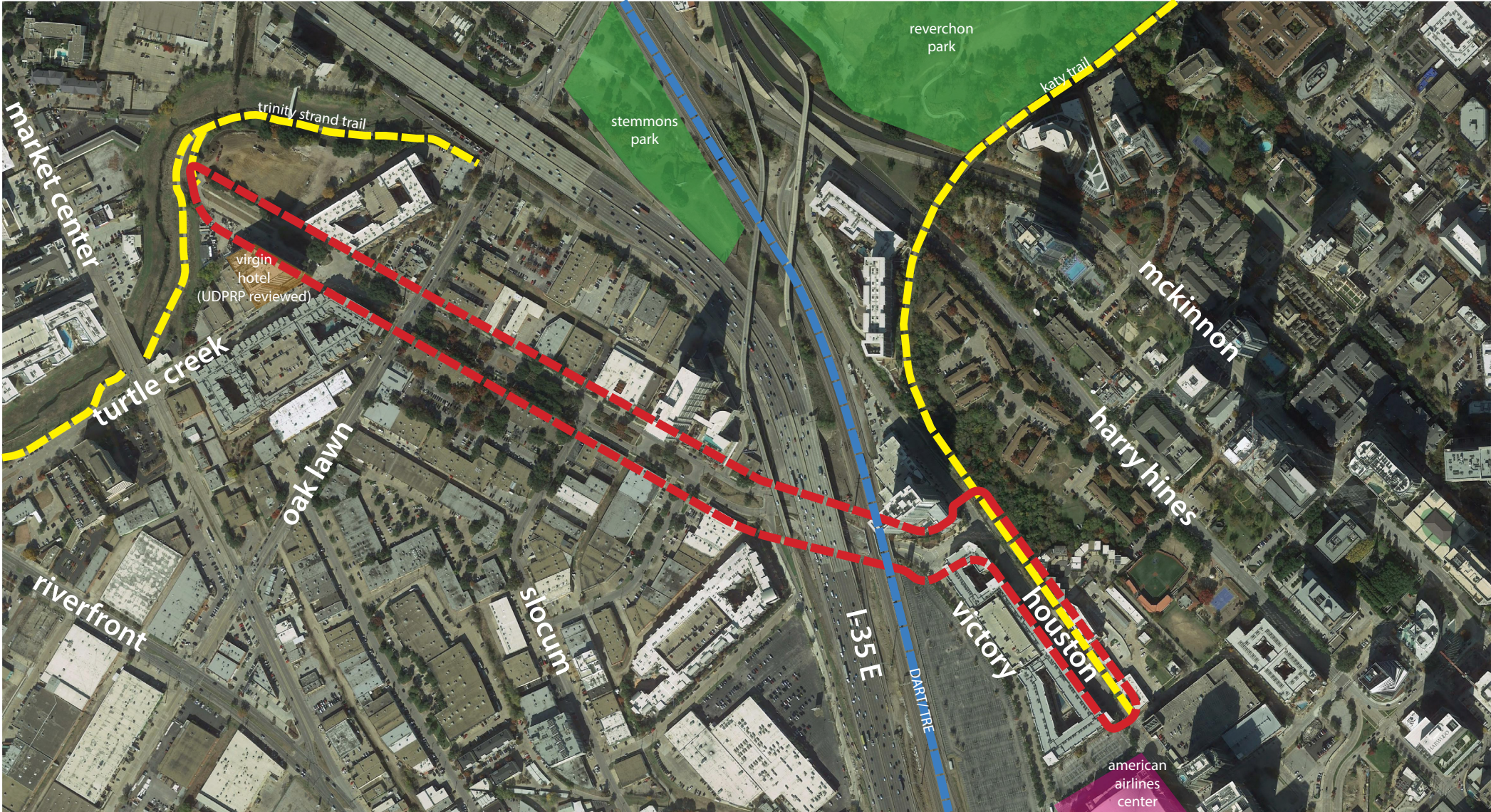
LOCATION: Dallas City Hall Room 5ES

Overview

Below is a summary of the Urban Design Peer Review Panel’s advice for the Circuit Trail: Trinity Strand Trail – Katy Trail Connector proposal as derived from the June 28th Peer Review session.

Advice Summary

- [1] The panel commends the development team for the proposal to create a critical bike and pedestrian connection between the Katy Trail and the Trinity Strand Trail and recommends further review of design changes and revisions to the project, notably the proposed bridge over Oak Lawn Avenue, at a future meeting.
- [2] The panel recommends that the design team further study improvements at all intersections along the corridor, particularly at Turtle Creek/Hi-Line and at the Katy Trail/Houston, in order to improve cyclist maneuverability and pedestrian safety. The team should also explore closing median cuts wherever possible to reduce pedestrian/vehicular conflicts to the greatest extent possible.
- [3] The panel advises that further design study be given to maximizing passive uses and aesthetics on the proposed bridge over Oak Lawn Avenue to serve as a useable open space focal point for the neighborhood. Alternatively, it is recommended that the design team consider not providing the bridge but instead maximize bike and pedestrian movement at-grade across Oak Lawn Avenue to create a strong, walkable node in the Design District.
- [4] The panel recommends that the design team enhance shade along the corridor in order to improve usability and pedestrian comfort through the provision of street trees and design elements on the proposed bridge.
- [5] The panel suggests that more study be given to the elements and design used to separate bike and pedestrian movements at intersections and along the shared path beneath Stemmons Freeway.
- [6] The panel recommends that the design team minimize vehicular lane widths to the greatest extent possible to increase bike and pedestrian space along the corridor while also increasing connections into the median along Hi-Line Drive from adjacent properties.



Policy References

- Forward Dallas!
Section 5 [urban design element]
- TIF Urban Design Guidelines
Part III, Part IV [Design District, Sports Arena]
- Dallas Complete Streets Design Manual
Chapters II, III, V

Context Description

The Trinity Strand Trail - Katy Trail Connector is a proposed one mile link between two highly used bike/pedestrian trails in Victory Park and the Design District. The link will provide a safe pedestrian and bike connection between the two popular recreation trails while also helping to provide open space and economic development to the adjacent districts. The Connector is one of the critical links needed to complete The Loop, a 50+ mile trail network comprising existing and proposed trails circling the heart of Dallas. Funding was dedicated in the 2017 Bond to complete the missing eleven miles of The Loop, including the Trinity Strand Trail - Katy Trail Connector.

Design considerations for the project include the preservation of existing trees and gateway public art improvements, to the greatest extent possible, the design of the improvements beneath Stemmons Freeway, the materiality and streetscape details for the bike lanes and sidewalk enhancements for the length of the project, and considerations for turn lane removal at Victory Avenue East and West.

Trinity Strand - Katy Trail Connector

Neighborhood:
Victory Park
Design District

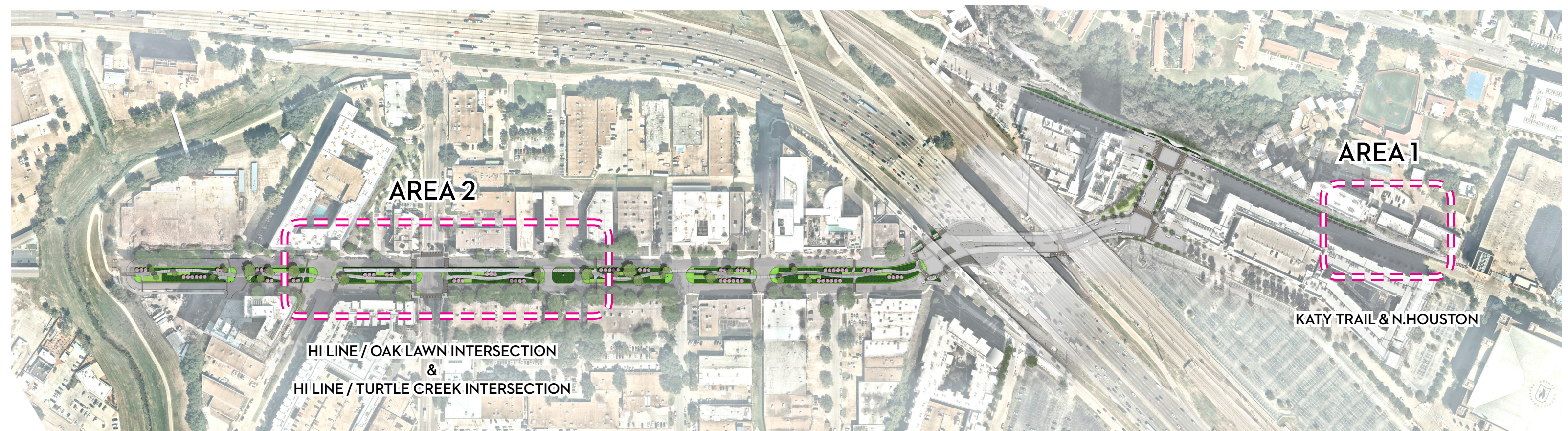
Program:
Bike Lanes
Open Space

CTC HI LINE CONNECTOR

KATY TRAIL TO TRINITY STRAND TRAIL

THE HI LINE CONNECTOR OVERCOMES THE PEDESTRIAN BARRIER OF INTERSTATE 35 BY BRIDGING DALLAS' MOST ICONIC TRAIL RESOURCE, THE KATY TRAIL, TO THE DESIGN DISTRICT'S TRINITY STRAND TRAIL.

OVERALL PROJECT SITE PLAN



THE LOOP IS A 50-MILE URBAN ACTIVE TRAIL NETWORK AROUND THE CORE OF DALLAS CONNECTING NEIGHBORHOODS TO TRANSPORTATION HUBS AND ECONOMIC OPPORTUNITIES. TO CREATE THIS NETWORK, THE CIRCUIT TRAIL CONSERVANCY (CTC), THE NON-PROFIT PUBLIC PRIVATE PARTNERSHIP WITH THE CITY OF DALLAS, IS CONNECTING EXISTING TRAILS AND BRINGING NEW TRAIL RESOURCES TO PARTS OF THE CITY THAT DO NOT CURRENTLY HAVE TRAIL ACCESS.

A. HI LINE CONNECTOR

1 MILE TRAIL THAT CONNECTS THE KATY TRAIL TO THE TRINITY STRAND TRAIL

B. TRINITY GATEWAY

CONNECTS THE TRINITY STRAND TRAIL TO THE TRINITY RIVER SKYLINE TRAIL

C. TRINITY SKYLINE TRAIL LINK

CONNECTS THE SKYLINE TRAIL TO SOUTH DALLAS / AUDUBON CENTER AND TRINITY FOREST

D. TRINITY FOREST SPINE TRAIL

8.7 MILE DEDICATED TRAIL CONNECTING WHITE ROCK LAKE AND EAST DALLAS TO SOUTH DALLAS AND THE TRINITY FOREST TRAIL SYSTEM

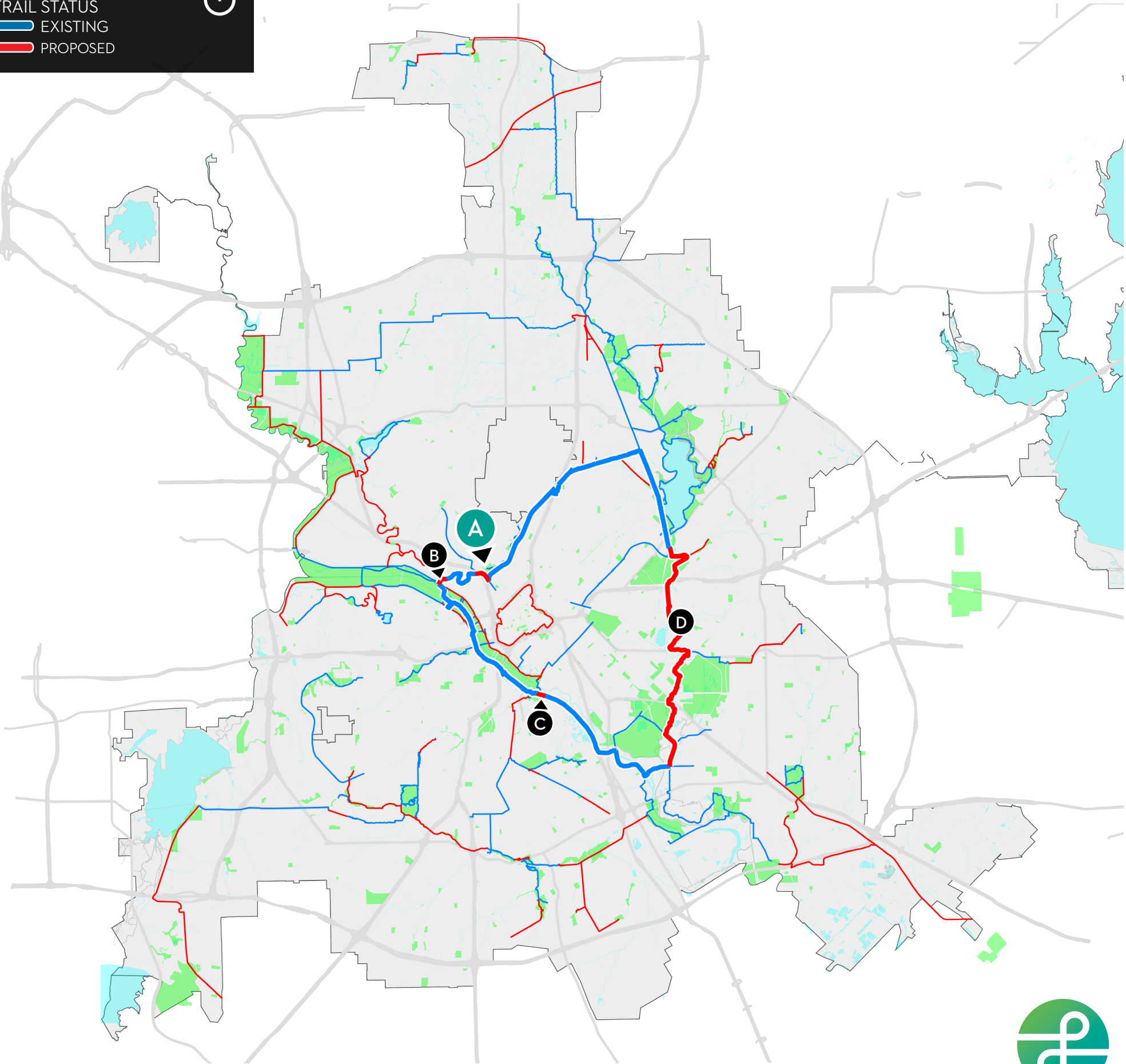
LEGEND

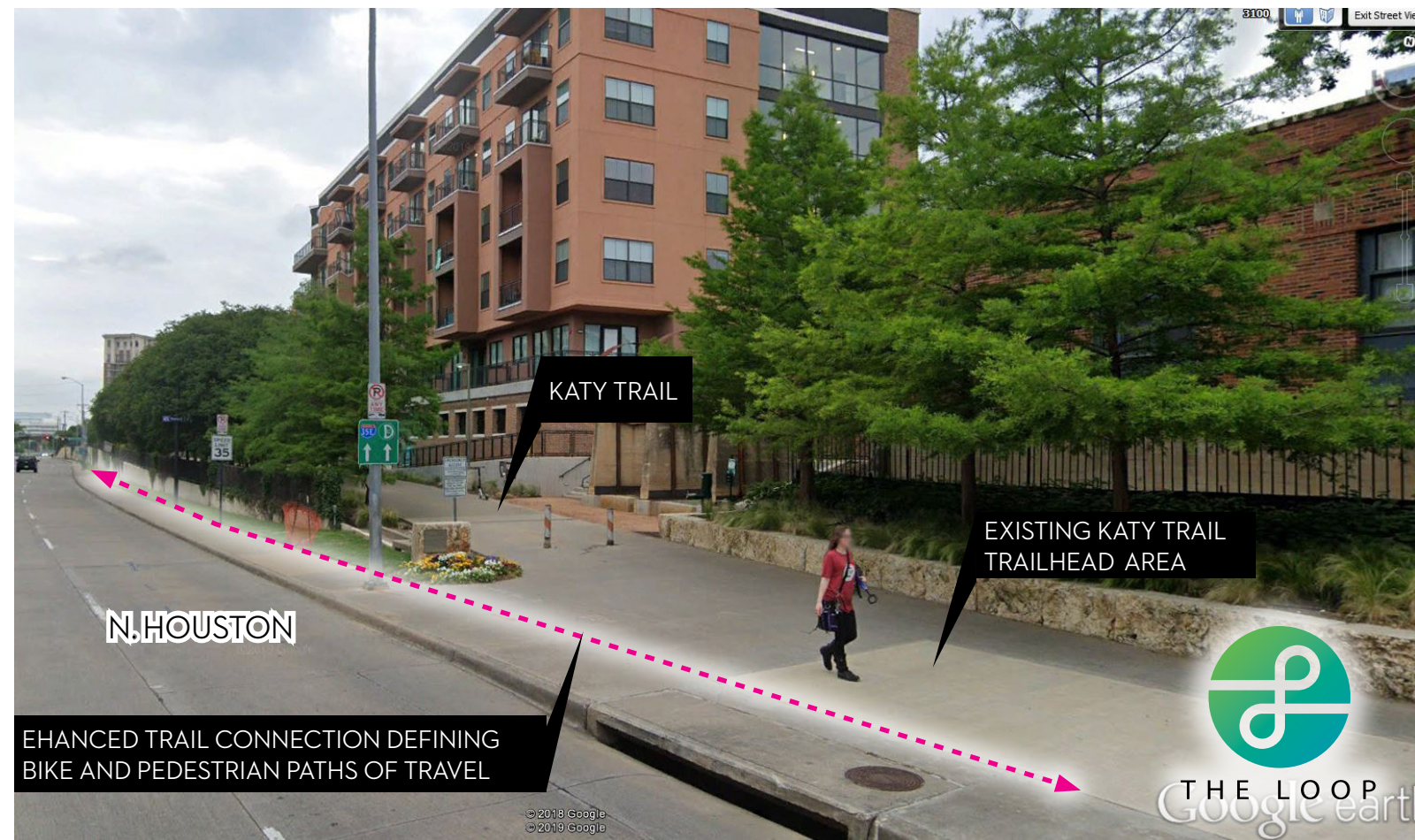
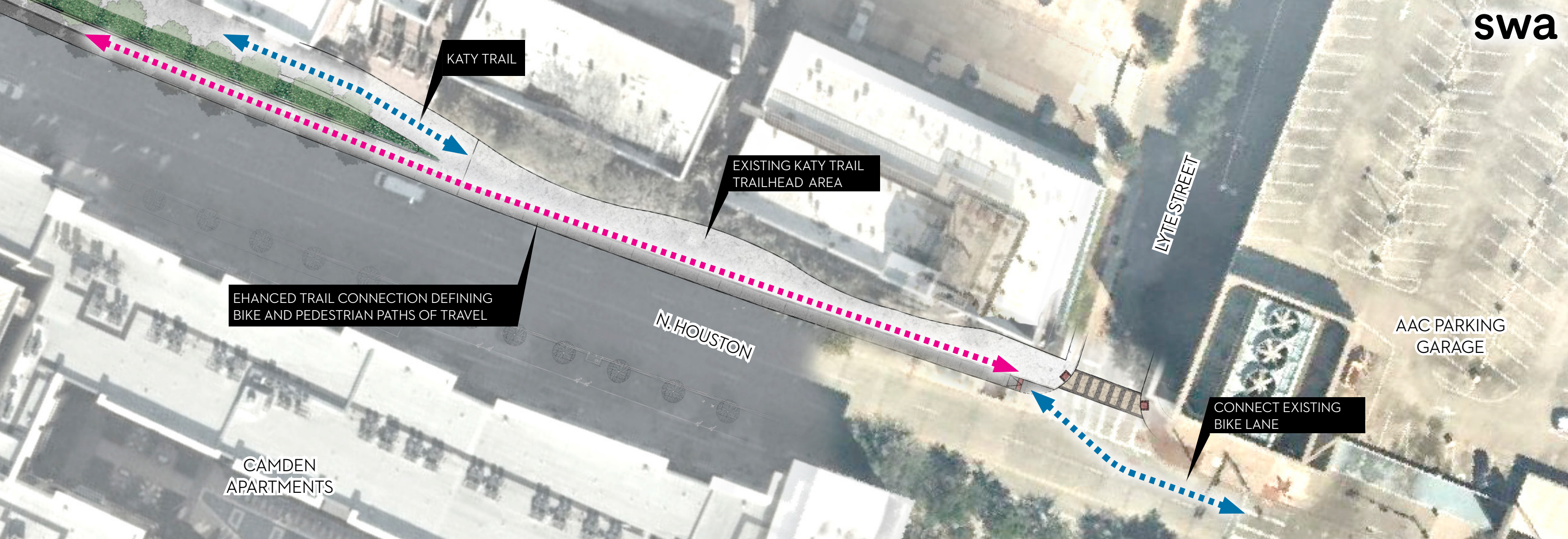
TRAIL STATUS

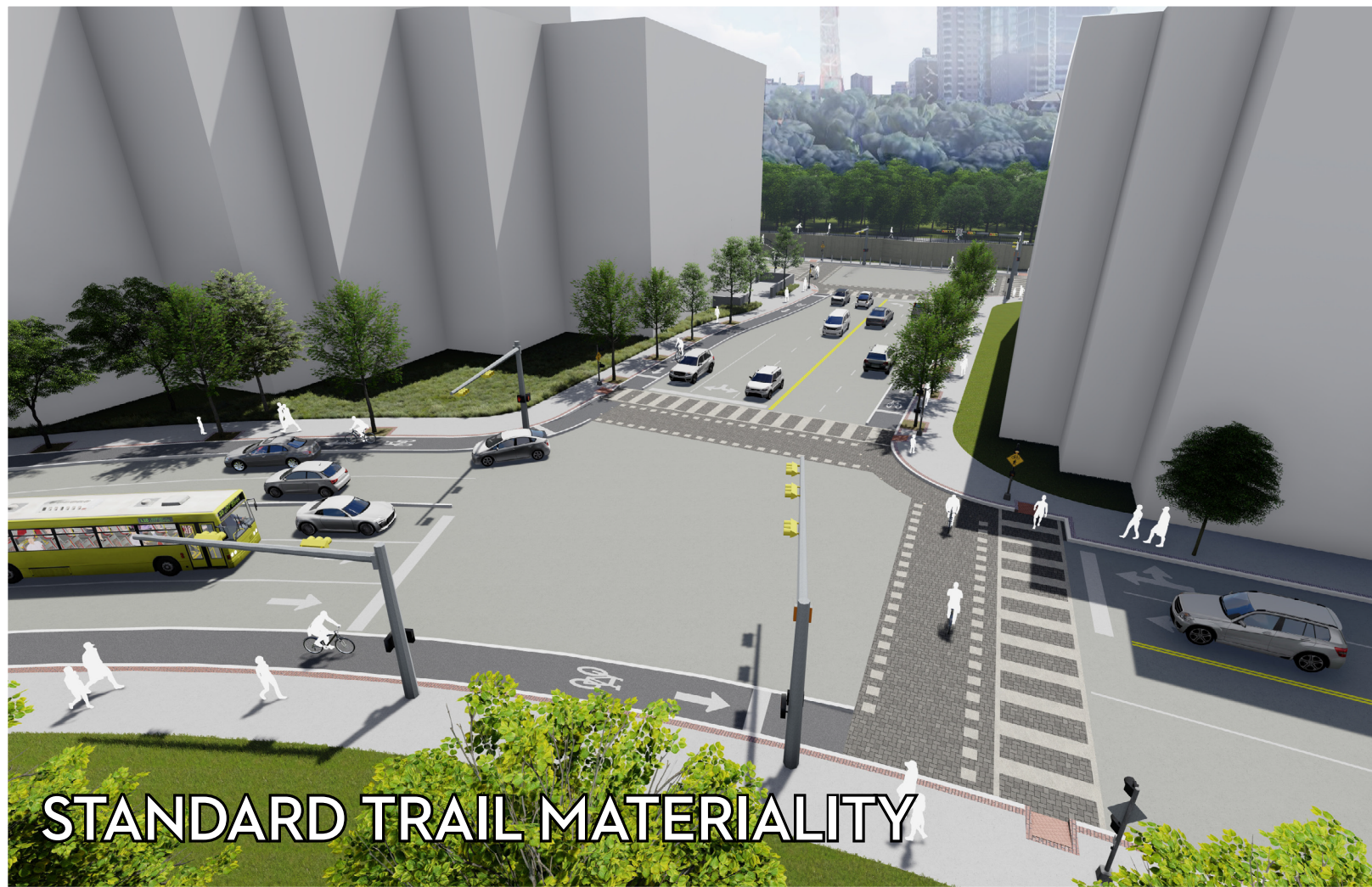
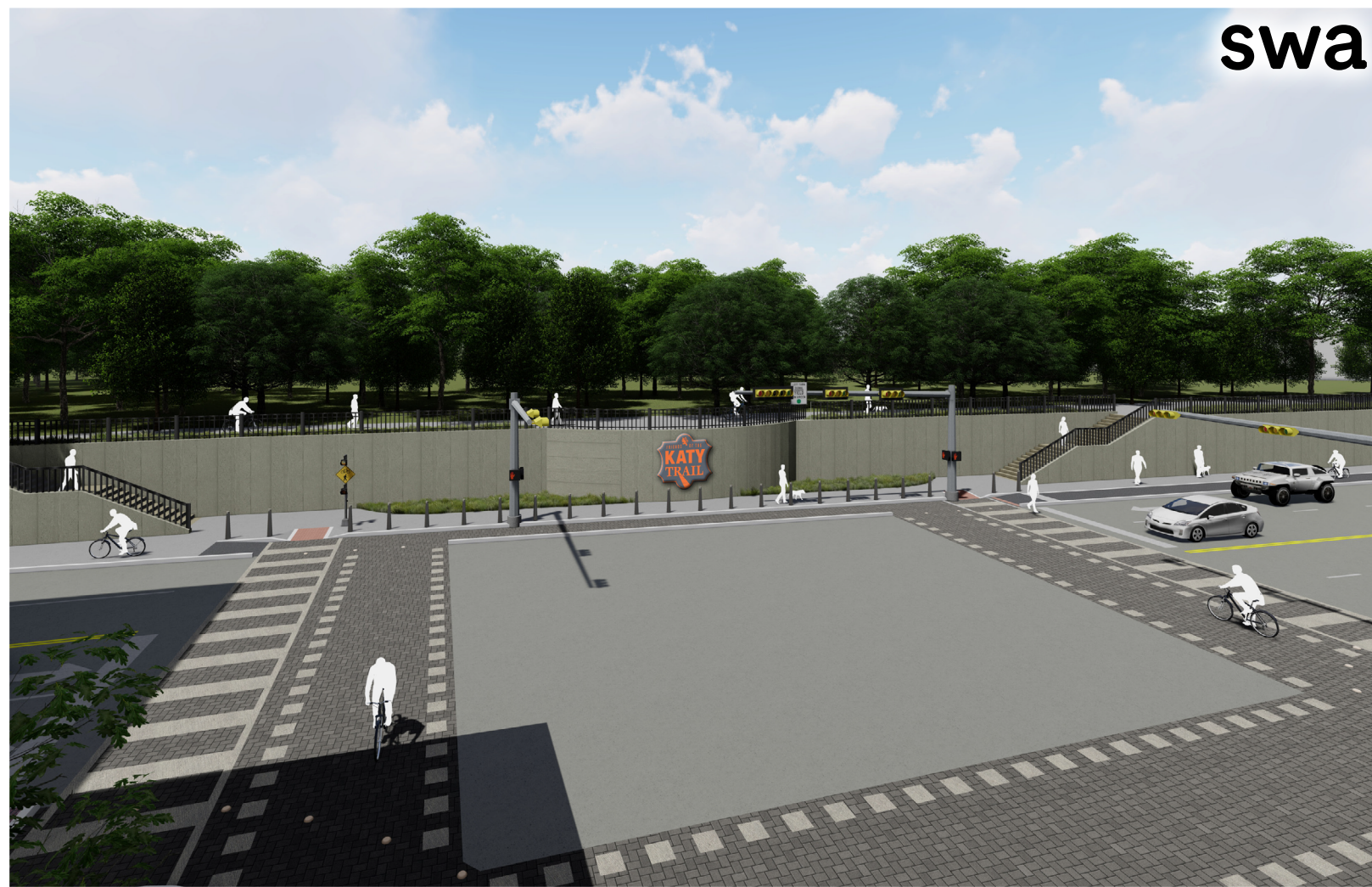
EXISTING

PROPOSED

N

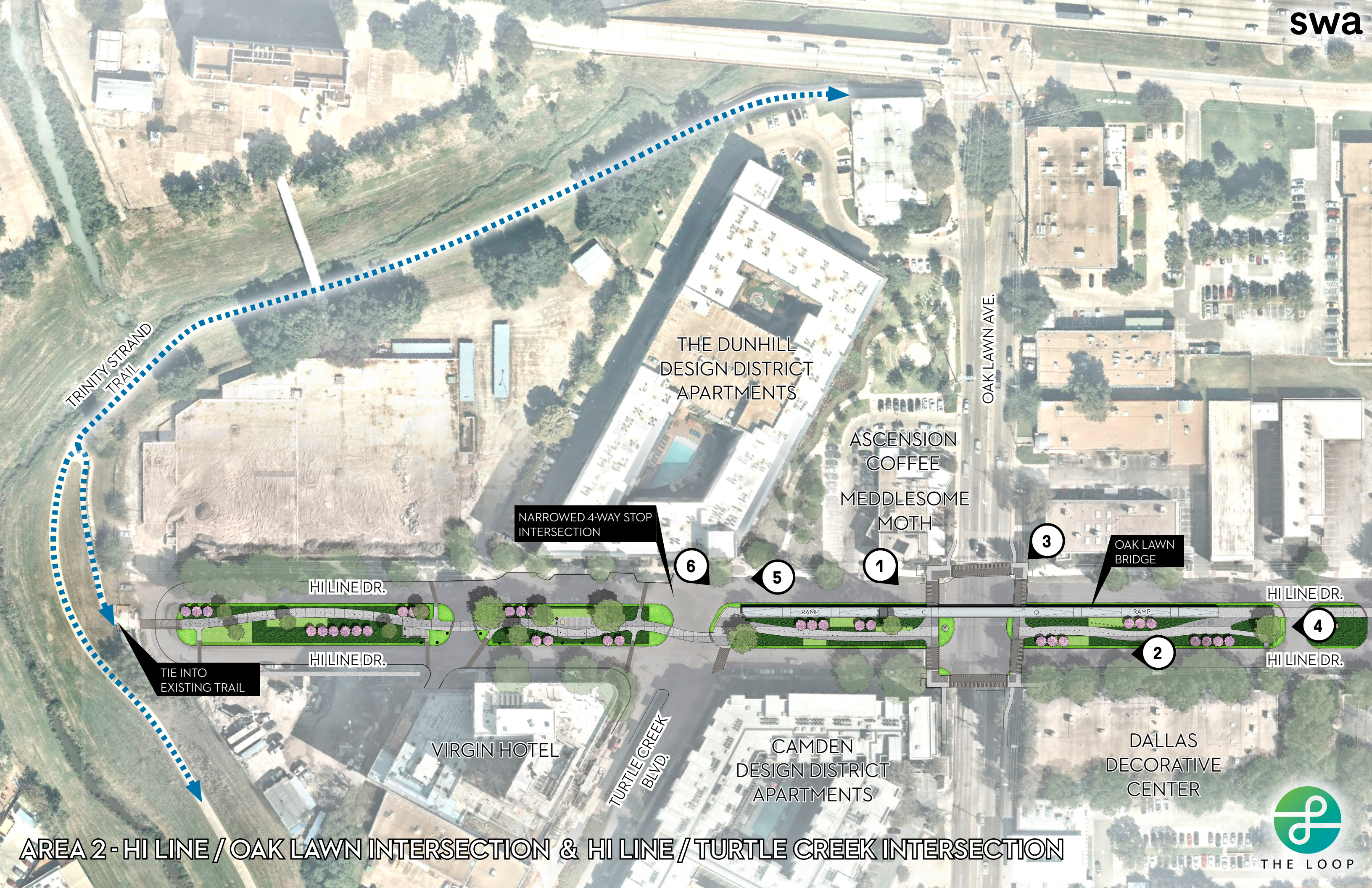








EXISTING CONDITIONS - HI LINE / OAK LAWN INTERSECTION



AREA 2 - HI LINE / OAK LAWN INTERSECTION & HI LINE / TURTLE CREEK INTERSECTION



VIEW
1

swa



OAK LAWN BRIDGE BIRDS-EYE



VIEW
2

swa



HI LINE MEDIAN AT OAK LAWN BRIDGE



VIEW
3

swa



INTERSECTION OF OAK LAWN AND HI LINE



VIEW
4

swa



TRAIL AT OAK LAWN BRIDGE

VIEW
5

swa



BRIDGE AT TURTLE CREEK AND HI LINE INTERSESECTION

VIEW
6

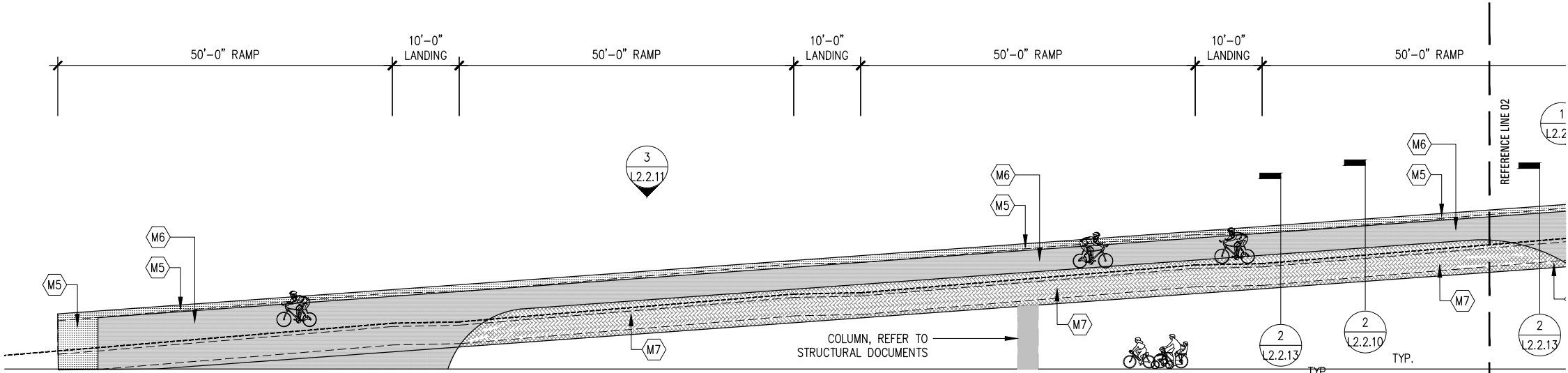


BRIDGE AT TURTLE CREEK AND HI LINE INTERSESECTION

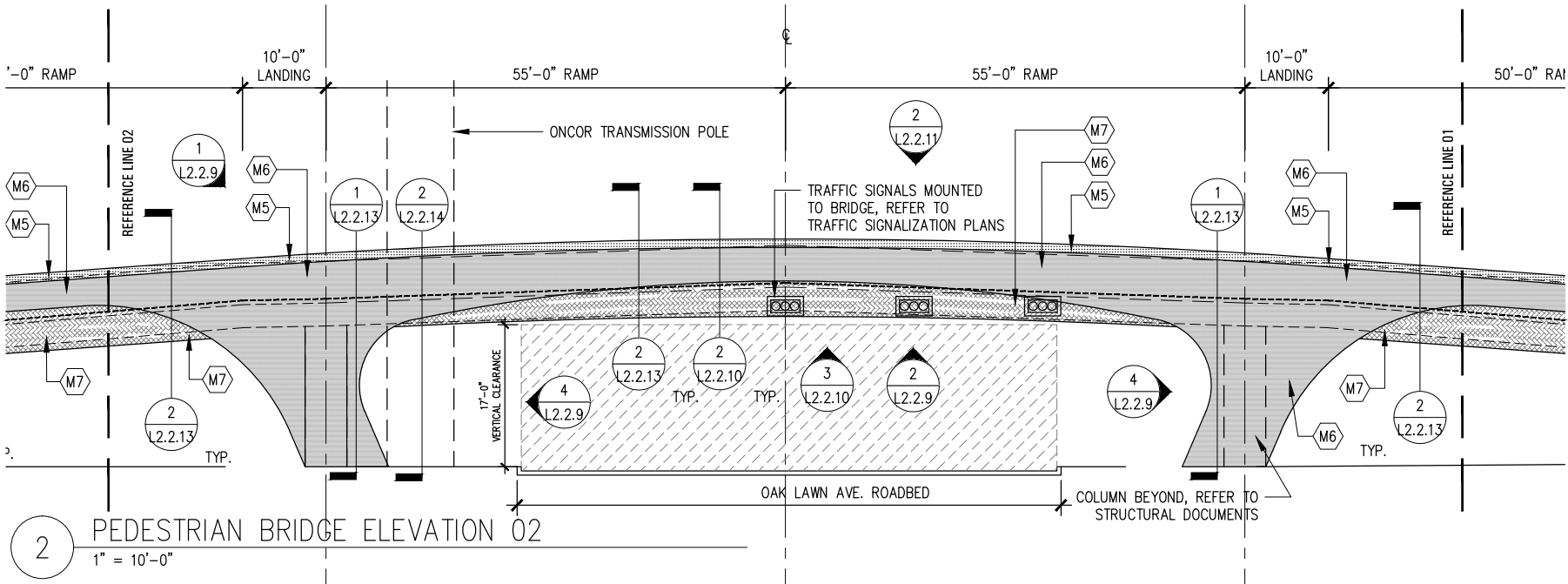


THE LOOP

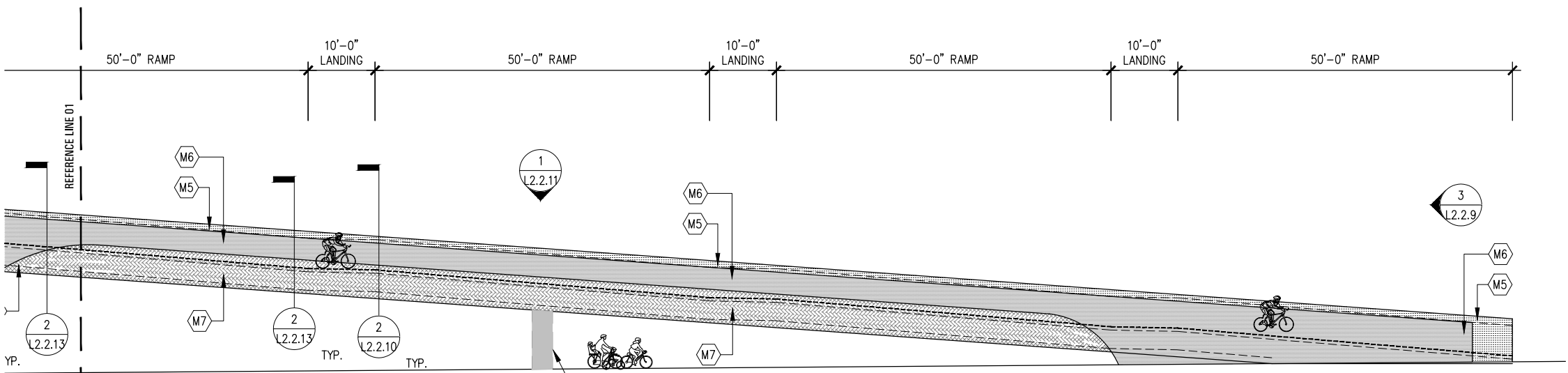
FOR REFERENCE PURPOSES ONLY



3 PEDESTRIAN BRIDGE ELEVATION 03
1" = 10'-0"



2 PEDESTRIAN BRIDGE ELEVATION 02
1" = 10'-0"



1 PEDESTRIAN BRIDGE ELEVATION 01
1" = 10'-0"

HI LINE CONNECTION

A TRAIL CONNECTING THE KATY TRAIL
TO THE TRINITY STRAND TRAIL

DALLAS, TX

Client
CIRCUIT TRAIL CONSERVANCY (CTC)
P.O. BOX 224484
DALLAS TX, 75222

PHONE - (972) 977-0397

Landscape Architect

swa

2001 Irving Boulevard
Suite 157
Dallas, Texas
75007-6803
United States
www.swagroup.com
+1.214.954.0018 o

Consultant

SALCEDO GROUP, INC.
(CIVIL ENGINEER)
BROCKETTE/DAVIS/DRAKE INC.
(STRUCTURAL ENGINEER)
SCOTT OLDNER LIGHTING DESIGN
(LIGHTING DESIGN)
MEPCE, INC.
(MECHANICAL, ELECTRICAL, PLUMBING)
INTEGRATED ENVIRON. SOLUTIONS, LLC.
(ENVIRONMENTAL)

Stamp

**FOR INTERIM
REVIEW ONLY**

Revisions

- 1
- 2
- 3
- 4
- 5

Date

JUNE 14, 2019

Phase

SCHEMATIC DESIGN

Job Number

CIRS801

Scale

North

Drawing Title

BRIDGE ELEVATIONS

Drawing Number

NOT FOR CONSTRUCTION

L2.2.12

© 2019 SWA



HI LINE CONNECTION

A TRAIL CONNECTING THE KATY TRAIL
TO THE TRINITY STRAND TRAIL

DALLAS, TX

Client

CIRCUIT TRAIL CONSERVANCY (C
P.O. BOX 224484
DALLAS TX, 75222

PHONE - (972) 977-0397

Landscape Architect

swa

2001 Irving Boulevard
Suite 157
Dallas, Texas
75207-6603
United States
www.swagroup.com
+1.214.954.0016 o

Consultant

SALCEDO GROUP, INC.
(CIVIL ENGINEER)
BROCKETTE/DAVIS/DRAKE INC.
(STRUCTURAL ENGINEER)
SCOTT OLDNER LIGHTING DESIGN
(LIGHTING DESIGN)
MEPCE, INC.
(MECHANICAL, ELECTRICAL, PLUMBING)
INTEGRATED ENVIRON. SOLUTIONS
(ENVIRONMENTAL)

Stamp

**FOR INTERIM
REVIEW ONLY**

Revisions

- 1
- 2
- 3
- 4
- 5

Date _____

JUNE 14, 2019

Phase

SCHEMATIC DESIGN

Job Number

CIRS801

Scale

North

Drawing Title

BRIDGE DETAILS

Drawing Number

NOT FOR CONSTRUCTION

L2.2.13

FOR REFERENCE PURPOSES ONLY

HI LINE CONNECTION

A TRAIL CONNECTING THE KATY TRAIL
TO THE TRINITY STRAND TRAIL

DALLAS, TX

Client

CIRCUIT TRAIL CONSERVANCY (CTC)
P.O. BOX 224484
DALLAS TX, 75222

PHONE - (972) 977-0397

Landscape Architect

swa

2001 Irving Boulevard
Suite 157
Dallas, Texas
75207-6803
United States
www.swagroup.com
+1.214.954.0018 o

Consultant

SALCEDO GROUP, INC.
(CIVIL ENGINEER)
BROCKETTE/DAVIS/DRAKE INC.
(STRUCTURAL ENGINEER)
SCOTT OLDNER LIGHTING DESIGN
(LIGHTING DESIGN)
MEPCE, INC.
(MECHANICAL, ELECTRICAL, PLUMBING)
INTEGRATED ENVIRON. SOLUTIONS, LLC.
(ENVIRONMENTAL)

Stamp

FOR INTERIM
REVIEW ONLY

Revisions

- 1
- 2
- 3
- 4
- 5

Date

JUNE 14, 2019

Phase

SCHEMATIC DESIGN

Job Number

CIRS801

Scale

North

Drawing Title

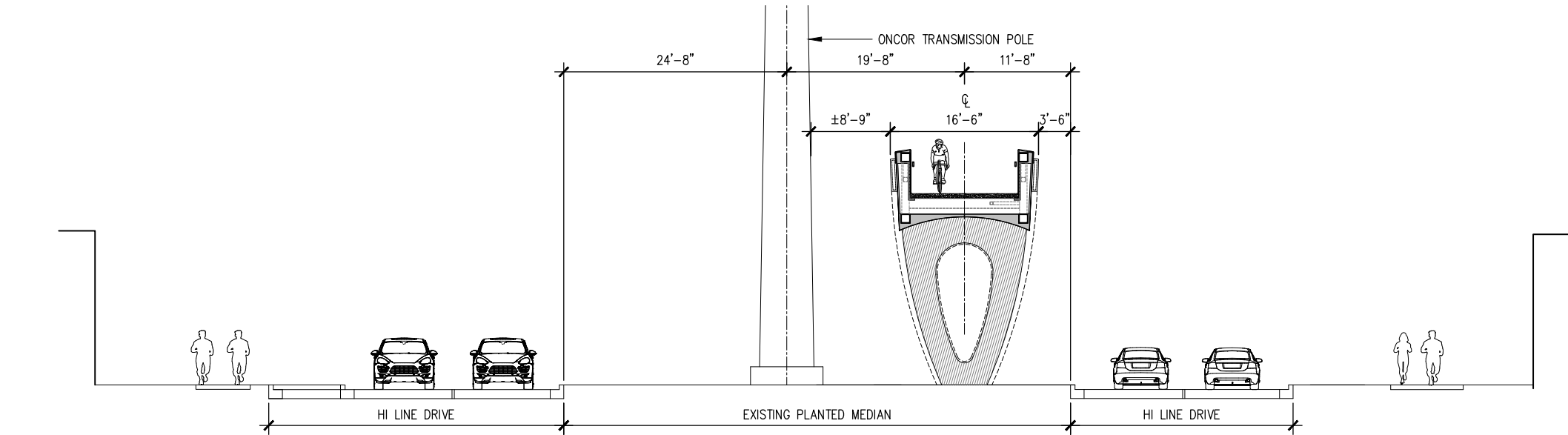
BRIDGE DETAILS

Drawing Number

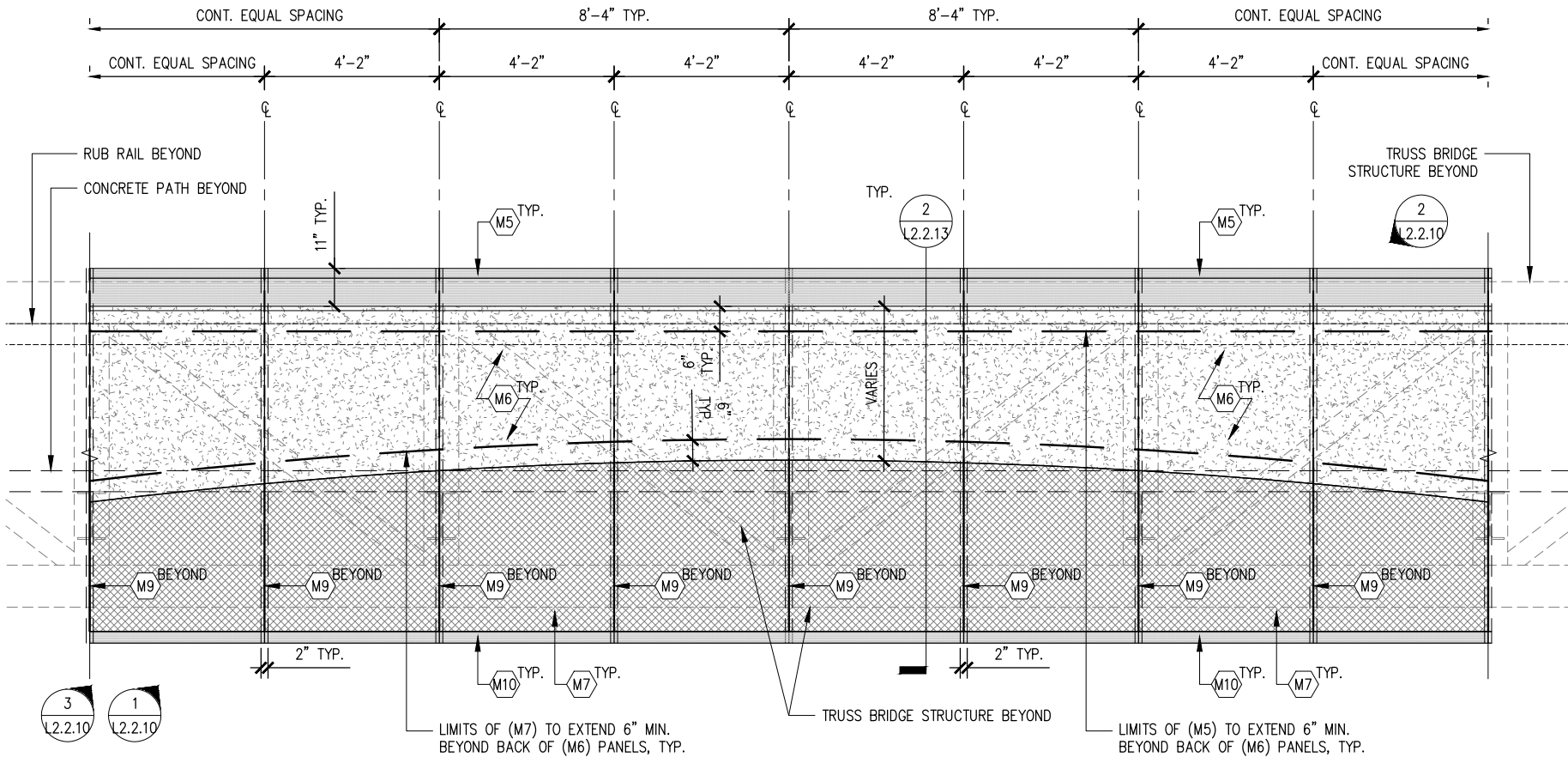
NOT FOR CONSTRUCTION

L2.2.14

© 2019 SWA

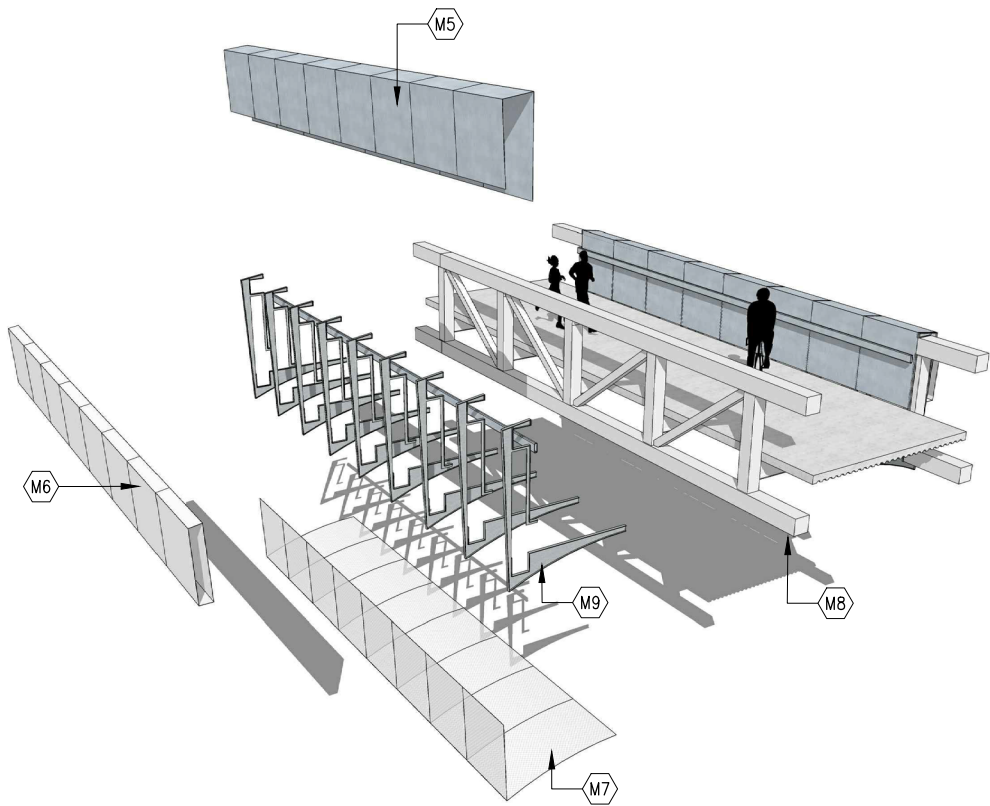


2 SITE SECTION AT ONCOR TRANSMISSION POLE
1/8" = 1'-0"

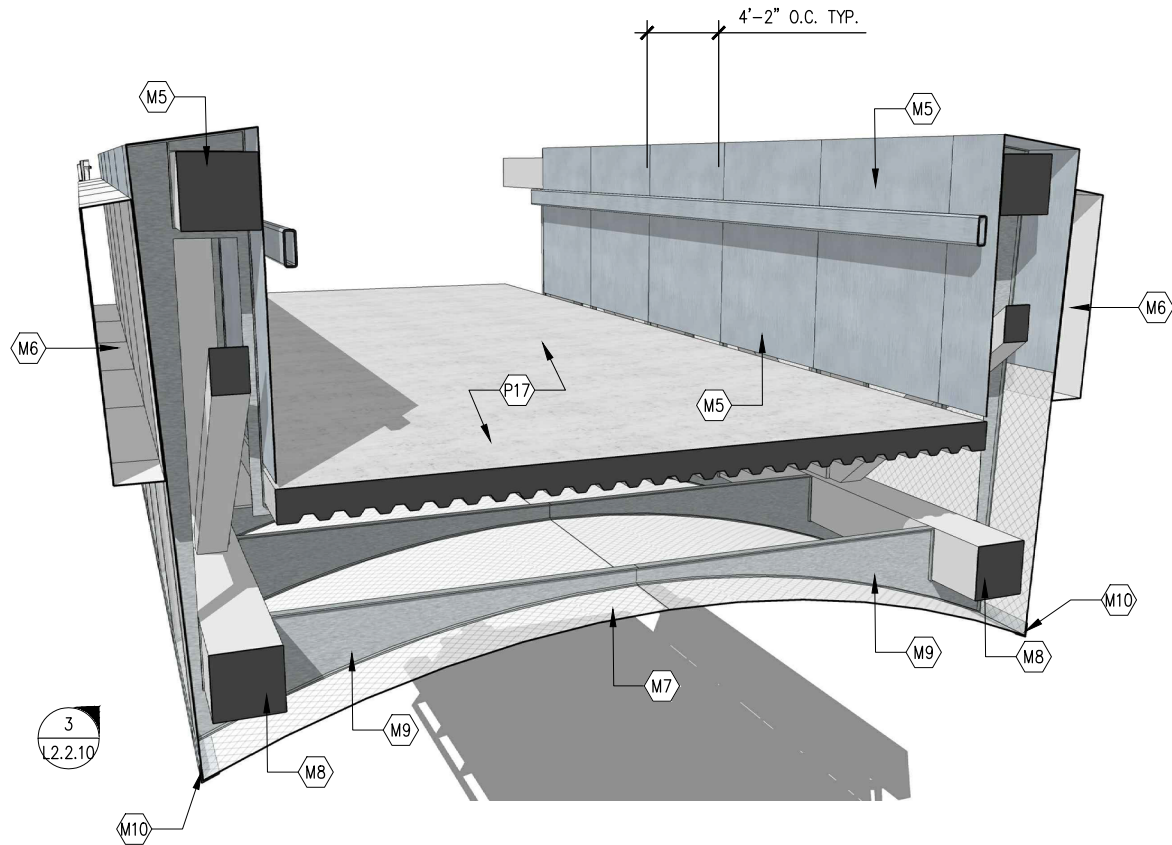


1 TYP. ELEVATION OF BRIDGE CLADDING SYSTEMS
1/2" = 1'-0"

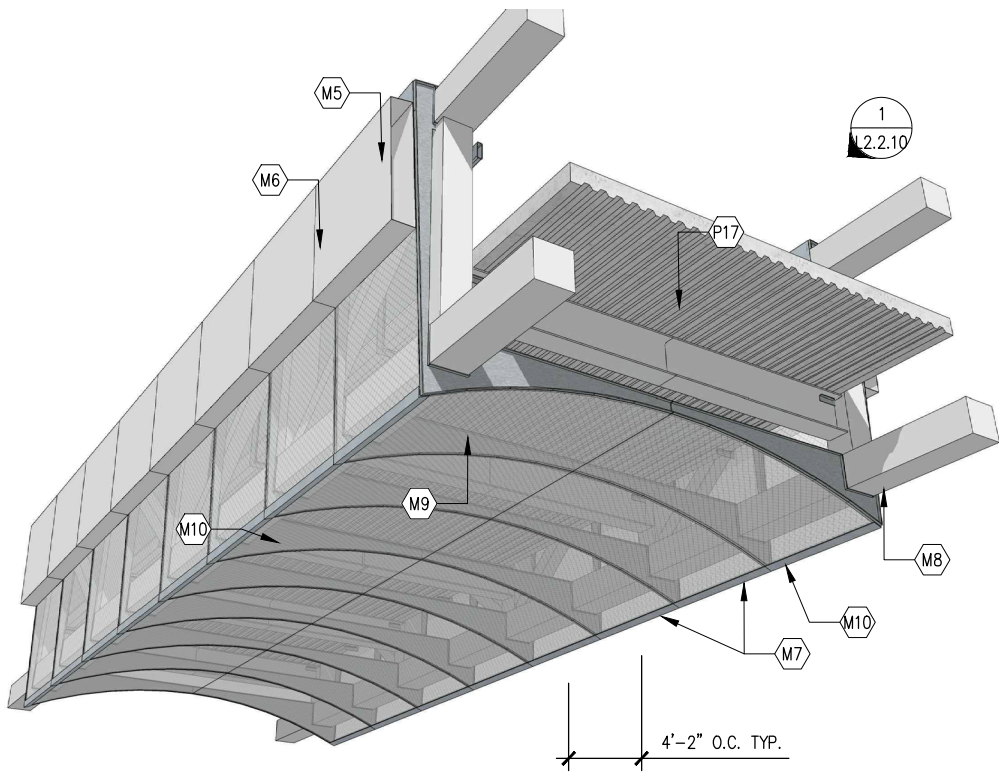
FOR REFERENCE PURPOSES ONLY



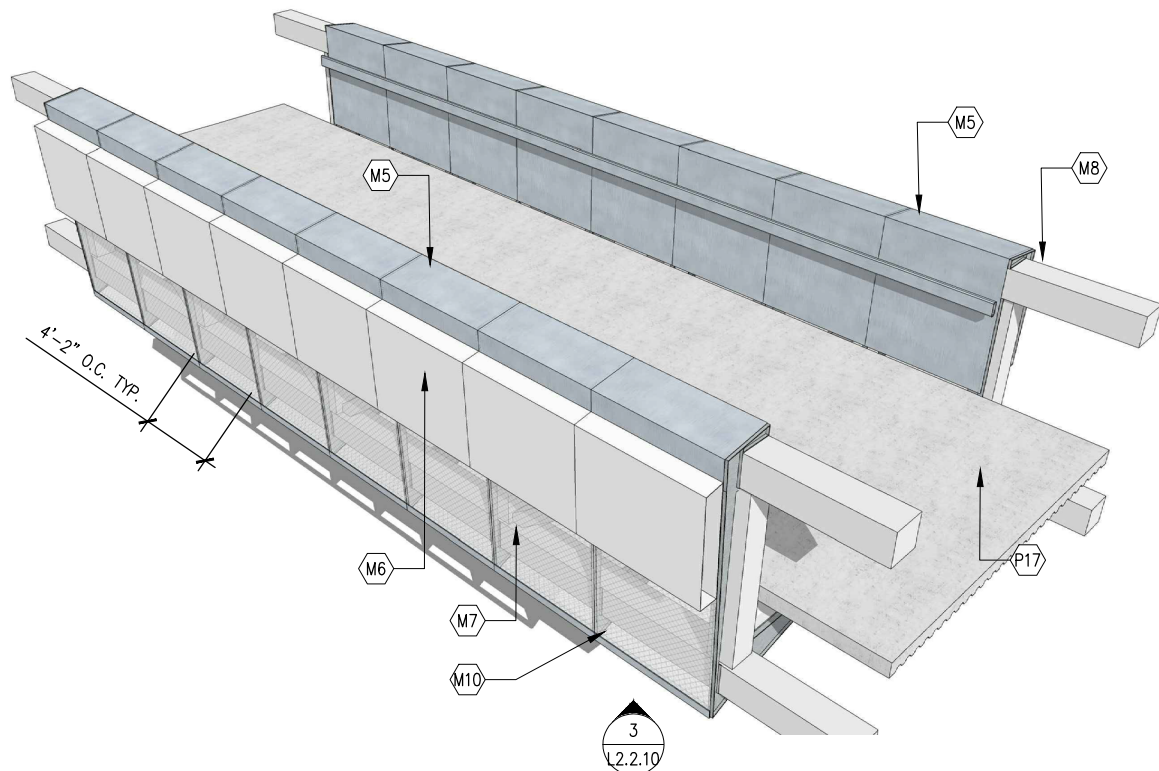
4 BRIDGE STRUCTURE RENDERING 04



2 BRIDGE STRUCTURE RENDERING 02



3 BRIDGE STRUCTURE RENDERING 03



1 BRIDGE STRUCTURE RENDERING 01

HI LINE CONNECTION

A TRAIL CONNECTING THE KATY TRAIL
TO THE TRINITY STRAND TRAIL

DALLAS, TX

Client

CIRCUIT TRAIL CONSERVANCY (CTC)
P.O. BOX 224484
DALLAS TX, 75222

PHONE - (972) 977-0397

Landscape Architect

swa

2001 Irving Boulevard
Suite 157
Dallas, Texas
75207-6803
United States
www.swagroup.com
+1.214.954.0018 o

Consultant

SALCEDO GROUP, INC.
(CIVIL ENGINEER)
BROCKETTE/DAVIS/DRAKE INC.
(STRUCTURAL ENGINEER)
SCOTT OLDNER LIGHTING DESIGN
(LIGHTING DESIGN)
MEPCE, INC.
(MECHANICAL, ELECTRICAL, PLUMBING)
INTEGRATED ENVIRON. SOLUTIONS, LLC.
(ENVIRONMENTAL)

Stamp

**FOR INTERIM
REVIEW ONLY**

Revisions

- 1
- 2
- 3
- 4
- 5

Date

JUNE 14, 2019

Phase

SCHEMATIC DESIGN

Job Number

CIRS801

Scale

North

Drawing Title

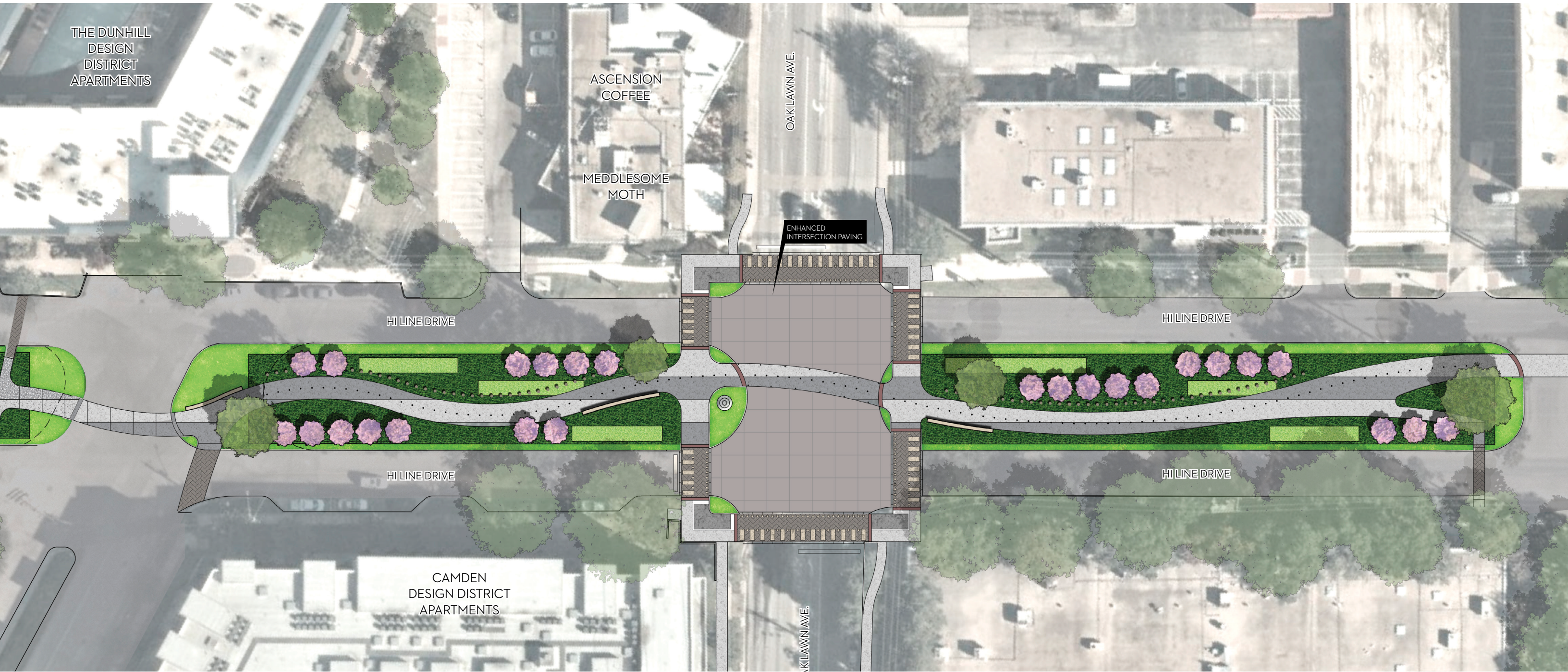
BRIDGE CHARACTER RENDERINGS
AND DETAILS

Drawing Number

NOT FOR CONSTRUCTION

L2.2.10

© 2019 SWA



THE DUNHILL
DESIGN
DISTRICT
APARTMENTS

ASCENSION
COFFEE

MEDDLESOME
MOTH

OAK LAWN AVE.

ENHANCED
INTERSECTION PAVING

HILINE DRIVE

HILINE DRIVE

HILINE DRIVE

HILINE DRIVE

CAMDEN
DESIGN DISTRICT
APARTMENTS

KLAWN AVE.