

Applicable Urban Design Priorities Project Should Achieve

- [1]

Utilize the project and the improvements made beneath Stemmons Freeway to create a stronger connection between Victory Park and the Design District.

In addition to the proposed bike and pedestrian facilities, the Connector, through thoughtful design, lighting, and additional amenities, can provide a dramatically enhanced, safe connection between two disparate neighborhoods while also creating functional open space.
- [2]

Attention to detail should be given to the materiality of streetscape improvements in order to create a unified design that fits seamlessly in with the existing neighborhoods.

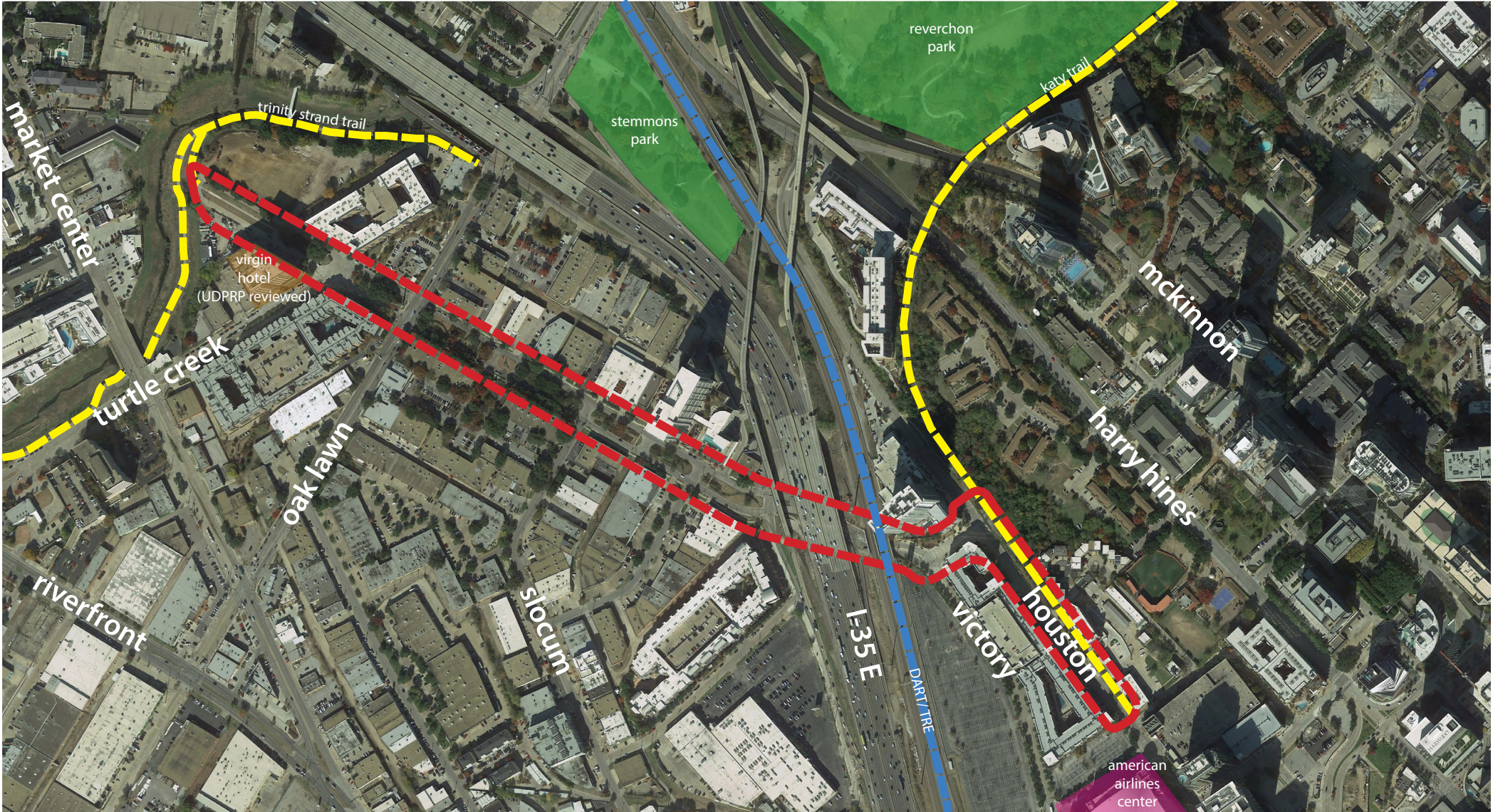
In addition to designing a comfortable and safe public realm for pedestrians, additional amenities such as bike racks, water fountains, benches, and lighting should be provided along the connection to create passive open space in a geography where little exists.
- [3]

Maximize preservation of existing trees and public art to preserve shade and previous beautification improvement projects.

The design of the median on Hi-Line will be critical to the success of the connection. The design should add to, and not take away from, the existing art along the corridor.
- [4]

Consider opportunities for lane reduction, where possible, to allow for enhanced public realm and bike lane design.

Through traffic studies and work with the City of Dallas Transportation Department, the design team should explore removing an east-bound turn lane on Victory Avenue East to allow for additional space for bike and pedestrian facilities.

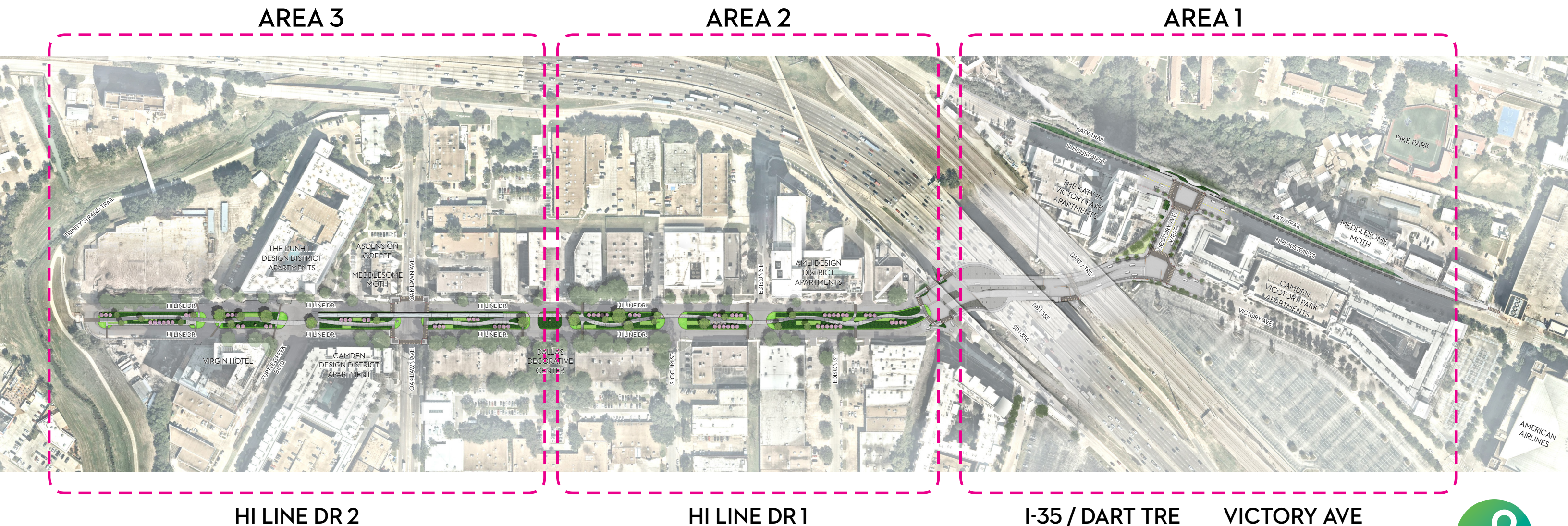


Policy References	Context Description	Trinity Strand - Katy Trail Connector
Forward Dallas! Section 5 [urban design element]	The Trinity Strand Trail - Katy Trail Connector is a proposed one mile link between two highly used bike/pedestrian trails in Victory Park and the Design District. The link will provide a safe pedestrian and bike connection between the two popular recreation trails while also helping to provide open space and economic development to the adjacent districts. The Connector is one of the critical links needed to complete The Loop, a 50+ mile trail network comprising existing and proposed trails circling the heart of Dallas. Funding was dedicated in the 2017 Bond to complete the missing eleven miles of The Loop, including the Trinity Strand Trail - Katy Trail Connector.	Neighborhood: Victory Park Design District
TIF Urban Design Guidelines Part III, Part IV [Design District, Sports Arena]		Program: Bike Lanes Open Space
Dallas Complete Streets Design Manual Chapters II, III, V	Design considerations for the project include the preservation of existing trees and gateway public art improvements, to the greatest extent possible, the design of the improvements beneath Stemmons Freeway, the materiality and streetscape details for the bike lanes and sidewalk enhancements for the length of the project, and considerations for turn lane removal at Victory Avenue East and West.	

CTC HI LINE CONNECTOR

KATY TRAIL TO TRINITY STRAND TRAIL

THE HI LINE CONNECTOR OVERCOMES THE PEDESTRIAN BARRIER OF INTERSTATE 35 BY BRIDGING DALLAS' MOST ICONIC TRAIL RESOURCE, THE KATY TRAIL, TO THE DESIGN DISTRICT'S TRINITY STRAND TRAIL.



HI LINE DR 2

HI LINE DR 1

I-35 / DART TRE

VICTORY AVE



THE LOOP

THE LOOP IS A 50-MILE URBAN ACTIVE TRAIL NETWORK AROUND THE CORE OF DALLAS CONNECTING NEIGHBORHOODS TO TRANSPORTATION HUBS AND ECONOMIC OPPORTUNITIES. TO CREATE THIS NETWORK, THE CIRCUIT TRAIL CONSERVANCY (CTC), THE NON-PROFIT PUBLIC PRIVATE PARTNERSHIP WITH THE CITY OF DALLAS, IS CONNECTING EXISTING TRAILS AND BRINGING NEW TRAIL RESOURCES TO PARTS OF THE CITY THAT DO NOT CURRENTLY HAVE TRAIL ACCESS.

A. HI LINE CONNECTOR

1 MILE TRAIL THAT CONNECTS THE KATY TRAIL TO THE TRINITY STRAND TRAIL

B. TRINITY GATEWAY

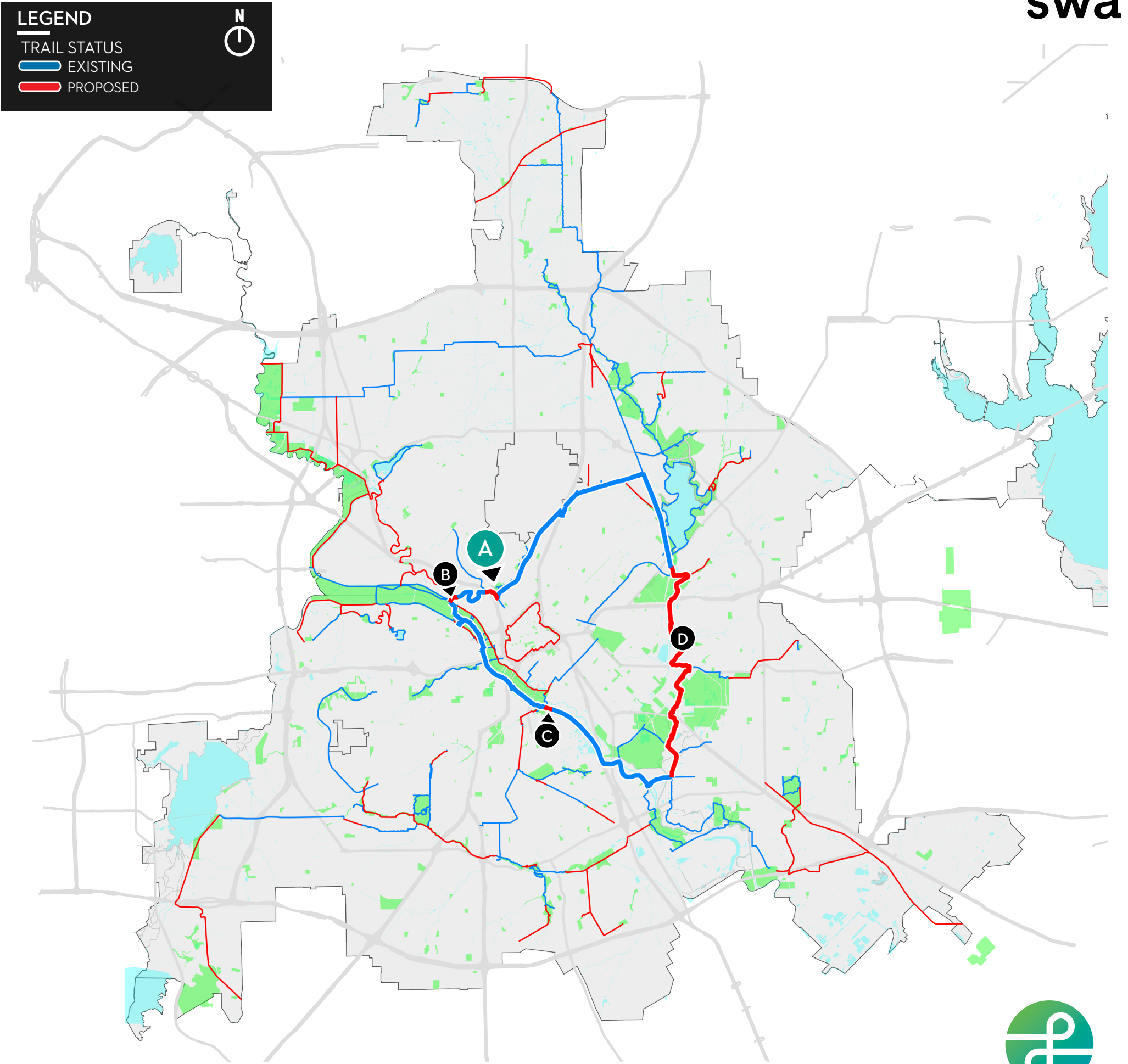
CONNECTS THE TRINITY STRAND TRAIL TO THE TRINITY RIVER SKYLINE TRAIL

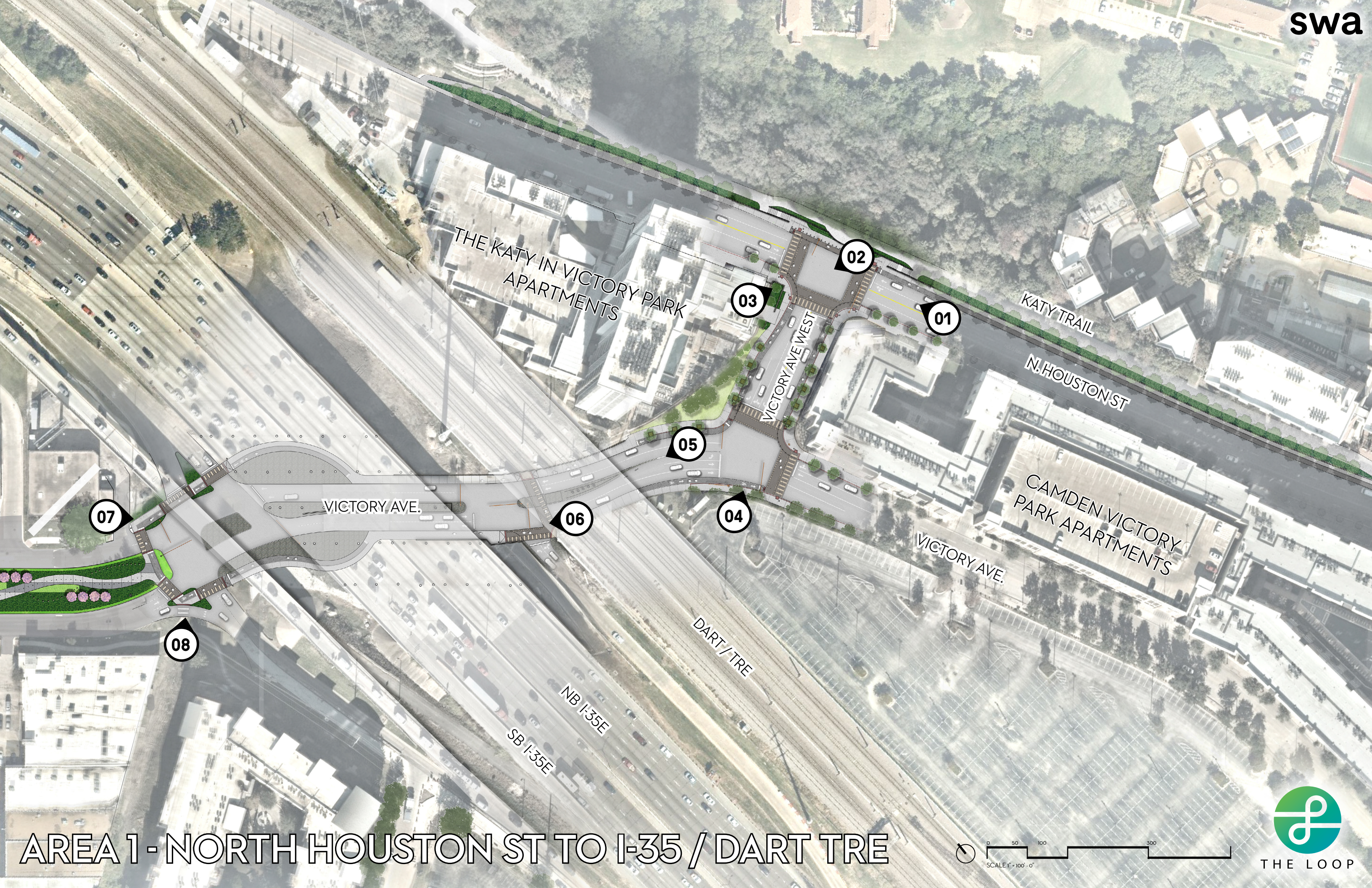
C. TRINITY SKYLINE TRAIL LINK

CONNECTS THE SKYLINE TRAIL TO SOUTH DALLAS / AUDUBON CENTER AND TRINITY FOREST

D. TRINITY FOREST SPINE TRAIL

8.7 MILE DEDICATED TRAIL CONNECTING WHITE ROCK LAKE AND EAST DALLAS TO SOUTH DALLAS AND THE TRINITY FOREST TRAIL SYSTEM





THE KATY IN VICTORY PARK
APARTMENTS

KATY TRAIL
N. HOUSTON ST

CAMDEN VICTORY
PARK APARTMENTS

VICTORY AVE.

VICTORY AVE.

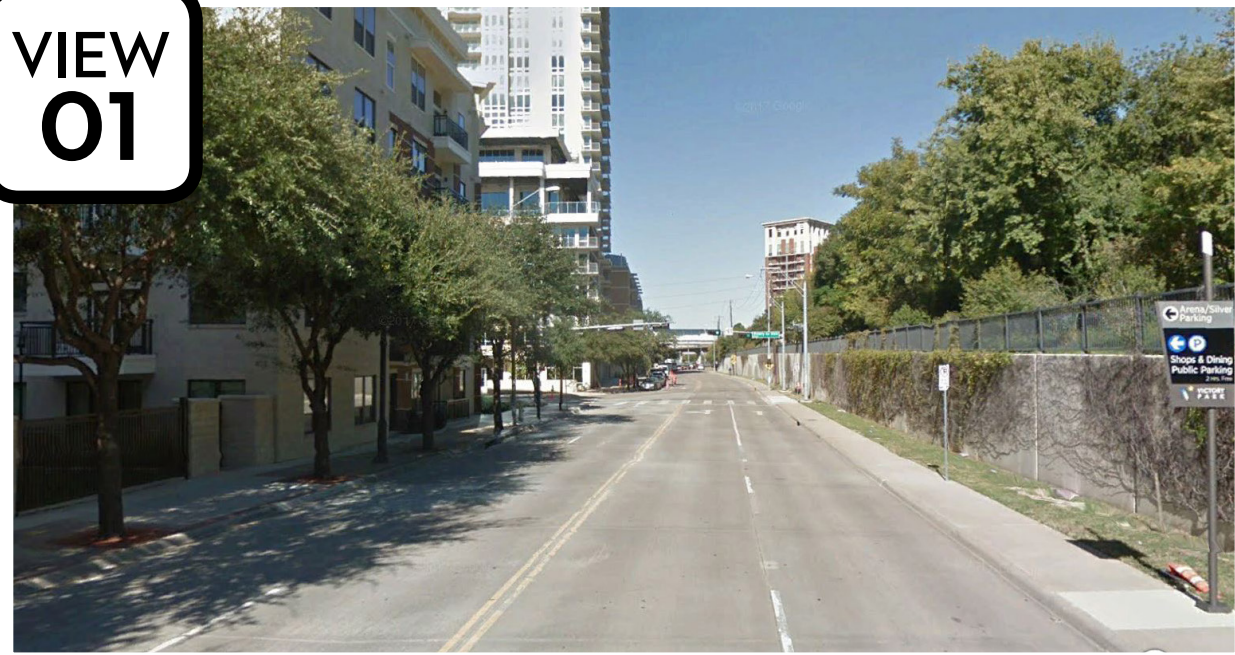
DART / TRE

NB I-35E
SB I-35E

AREA 1 - NORTH HOUSTON ST TO I-35 / DART TRE

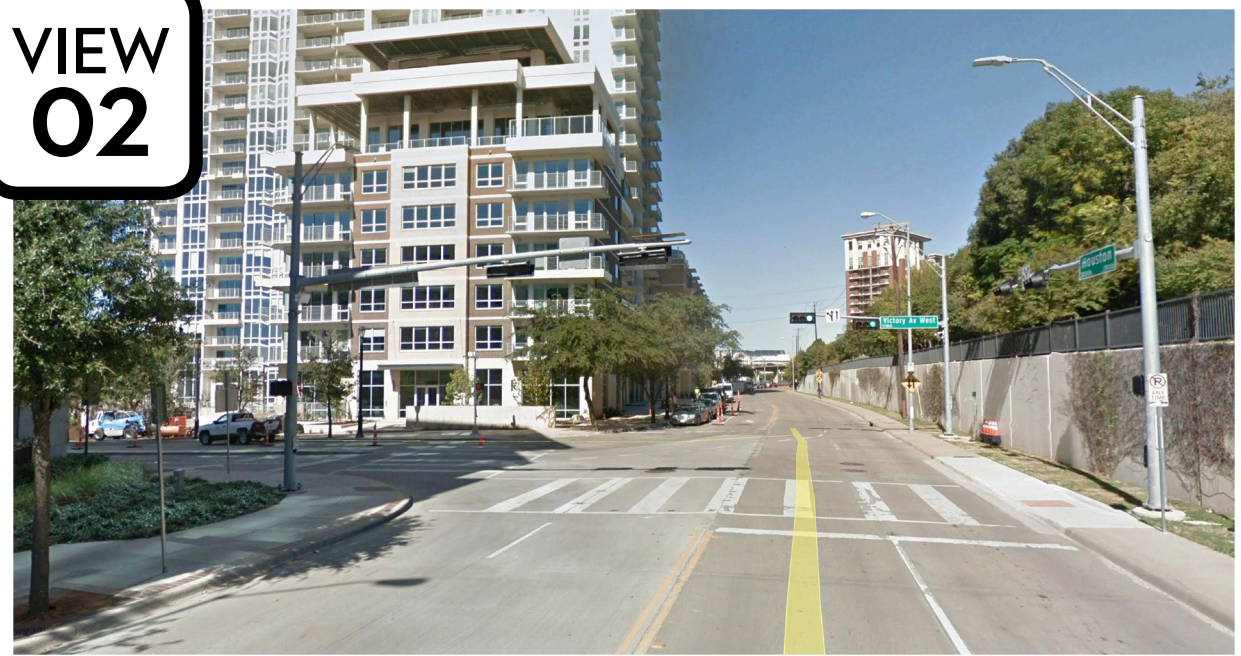


VIEW
01



N. HOUSTON - AT KATY TRAIL

VIEW
02



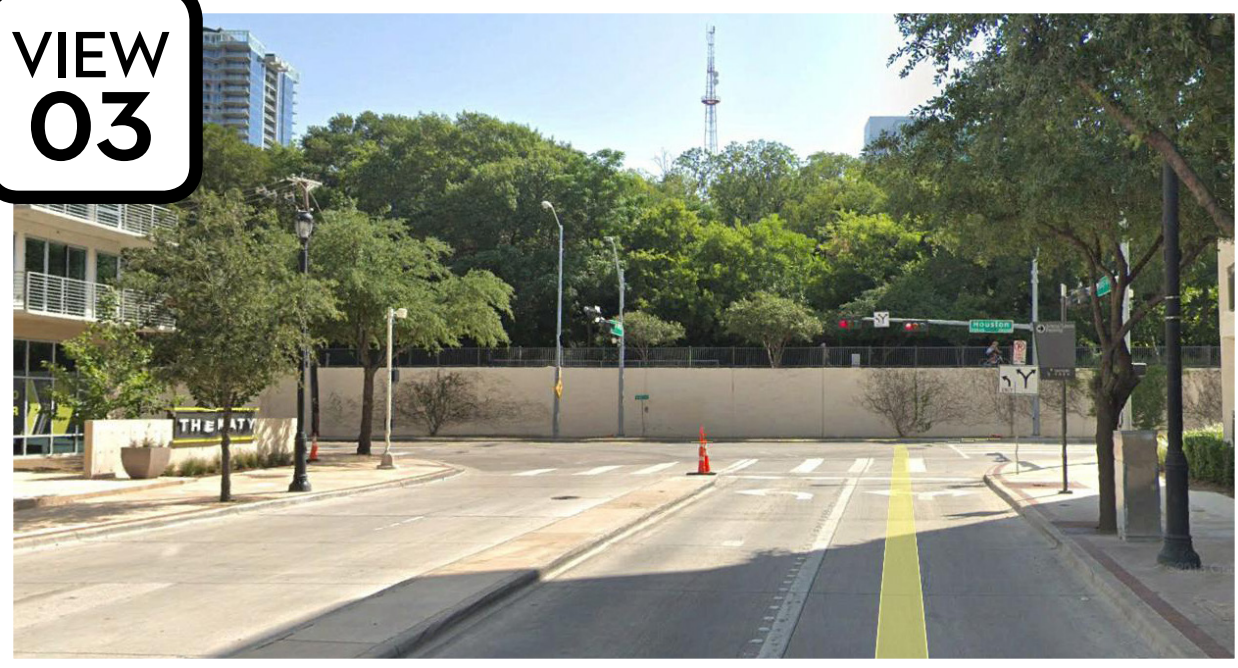
THE KATY IN VICTORY
PARK APARTMENTS



N. HOUSTON - VICTORY AVE WEST



THE LOOP

VIEW
03

*** THE PROPOSED TRAIL CONNECTION TO THE KATY TRAIL IS A PROJECT ALTERNATE AND NOT A PART OF THE PROJECT BASE BID ***



STAIR TO KATY TRAIL

_ N. HOUSTON - VICTORY AVE WEST



THE LOOP

VIEW
04



swa

THE KATY IN VICTORY
PARK APARTMENTS

KATY TRAIL

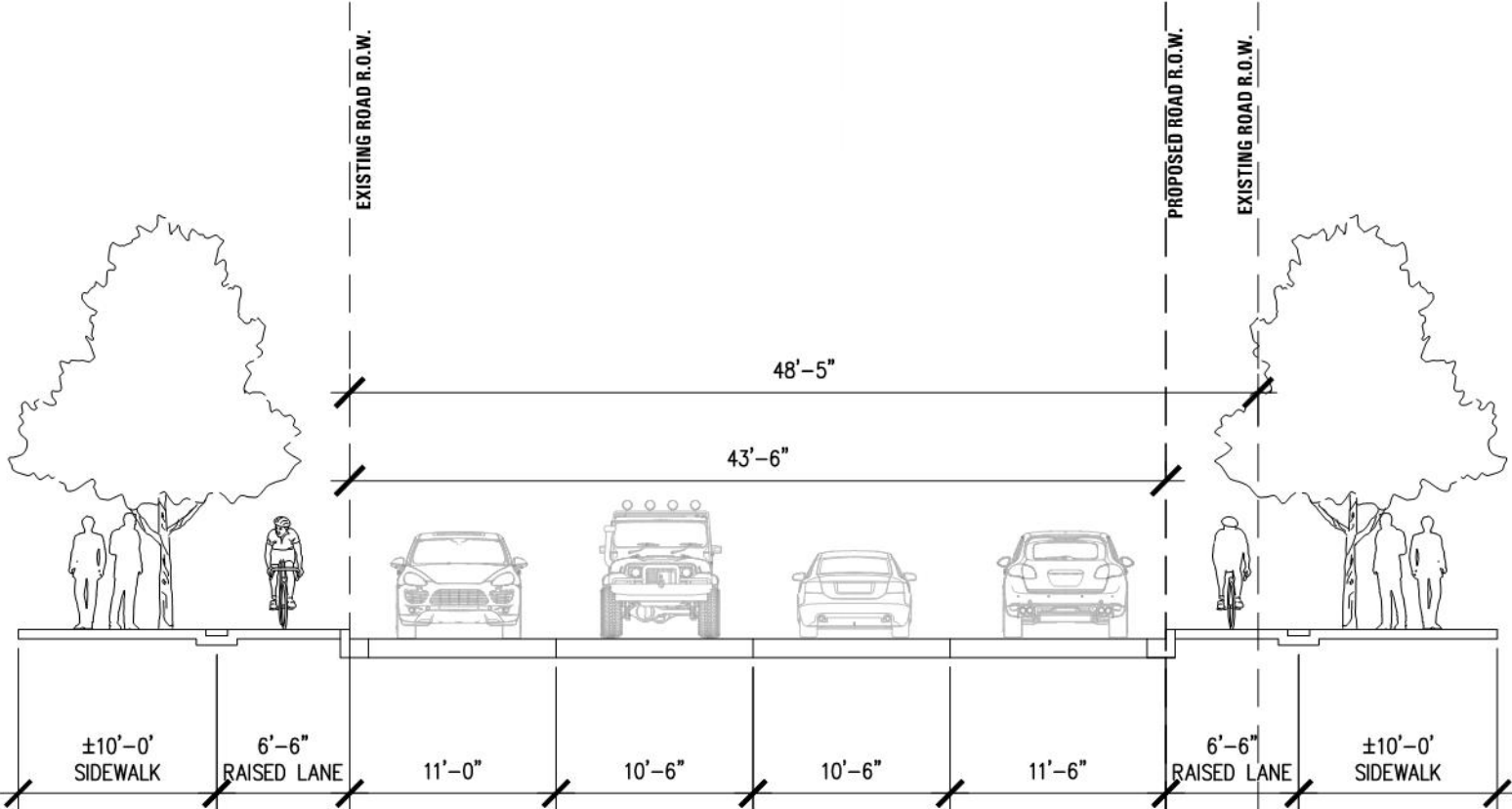
CAMDEN IN VICTORY
PARK APARTMENTS



VICTORY AVE - VICTORY AVE WEST



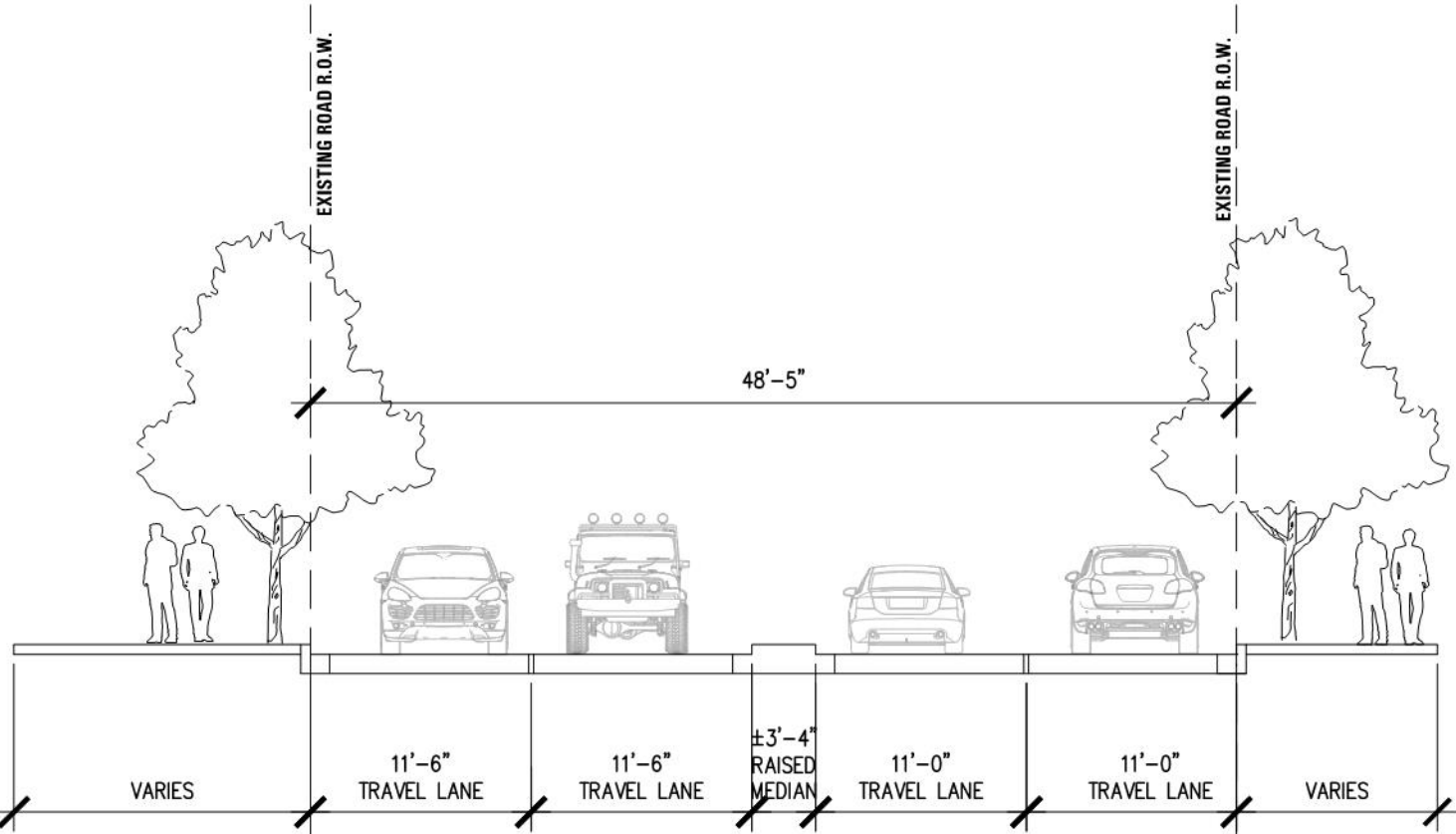
TYPICAL STREET SECTIONS AT VICTORY WEST



PROPOSED CONDITION



PROPOSED CONDITION

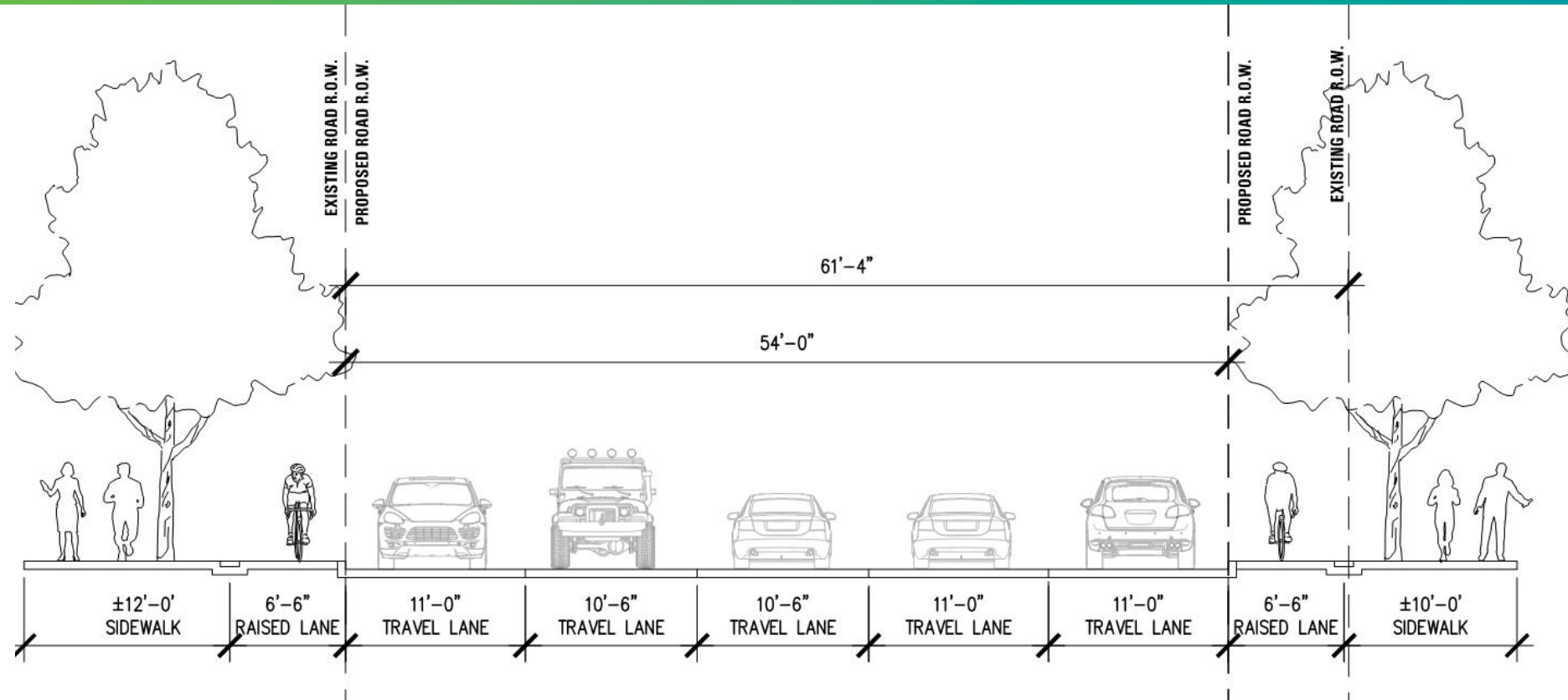


EXISTING CONDITION



EXISTING CONDITION

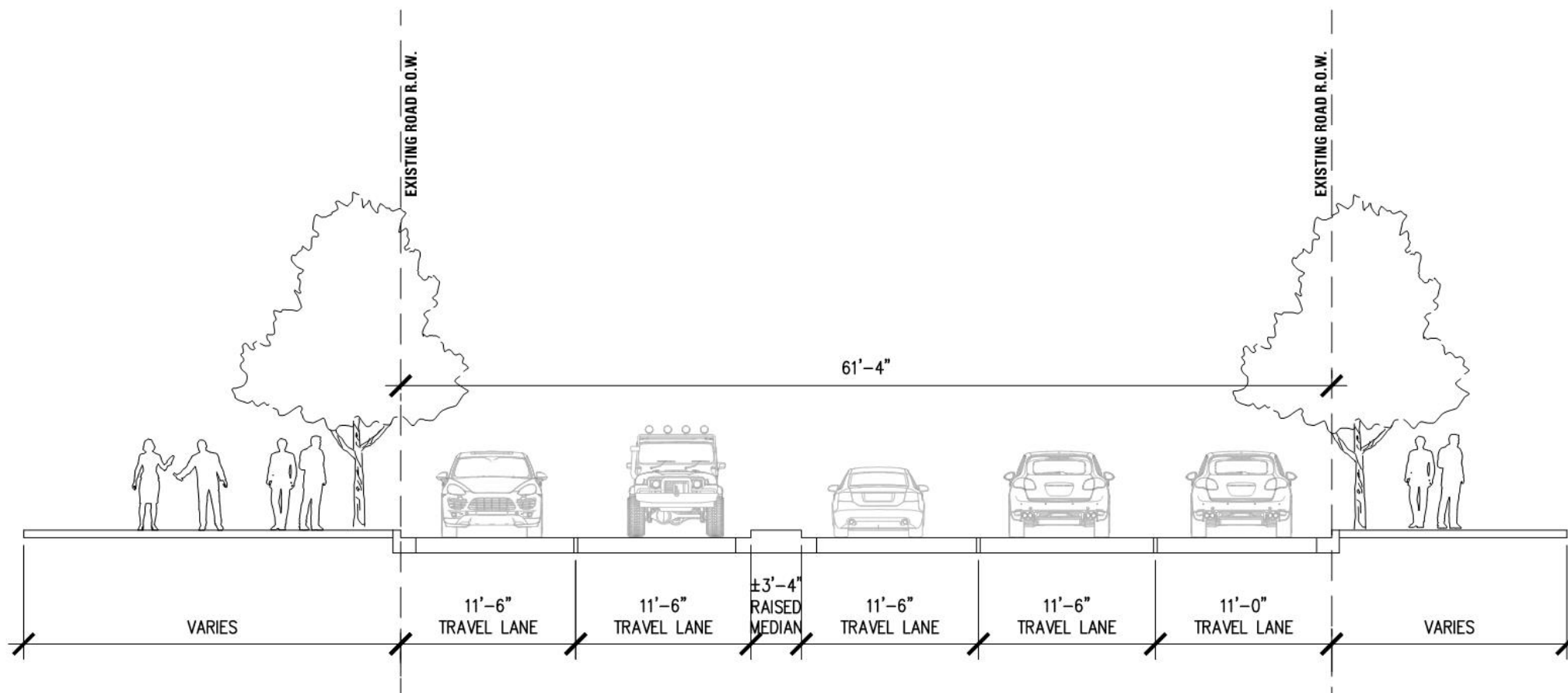
TYPICAL STREET SECTIONS AT VICTORY WEST



PROPOSED CONDITION



PROPOSED CONDITION



EXISTING CONDITION



EXISTING CONDITION



VICTORY AVE - HI LINE DR

VIEW
06



FUTURE DNT RAMP

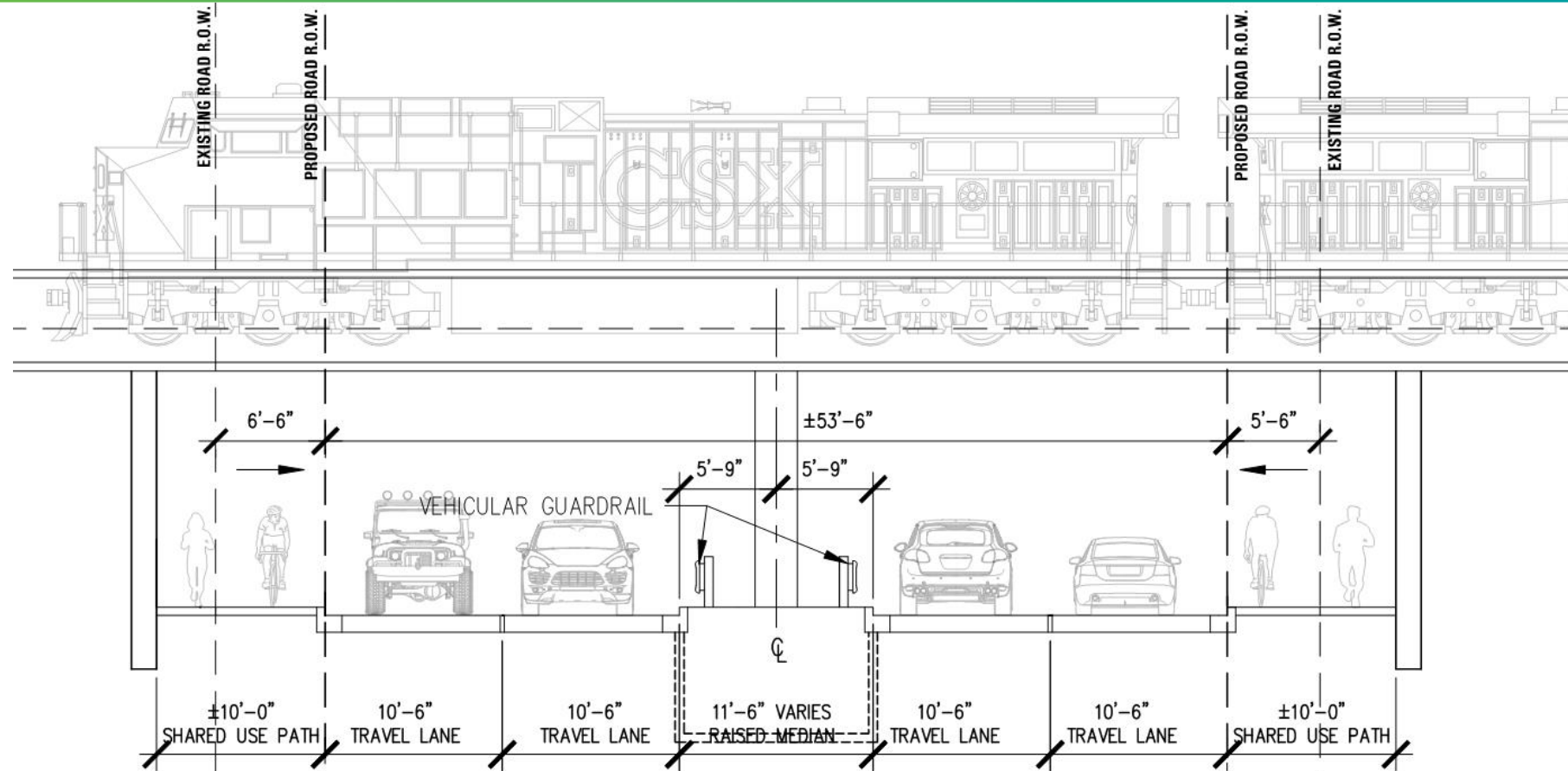


VICTORY AVE - NB I-35E

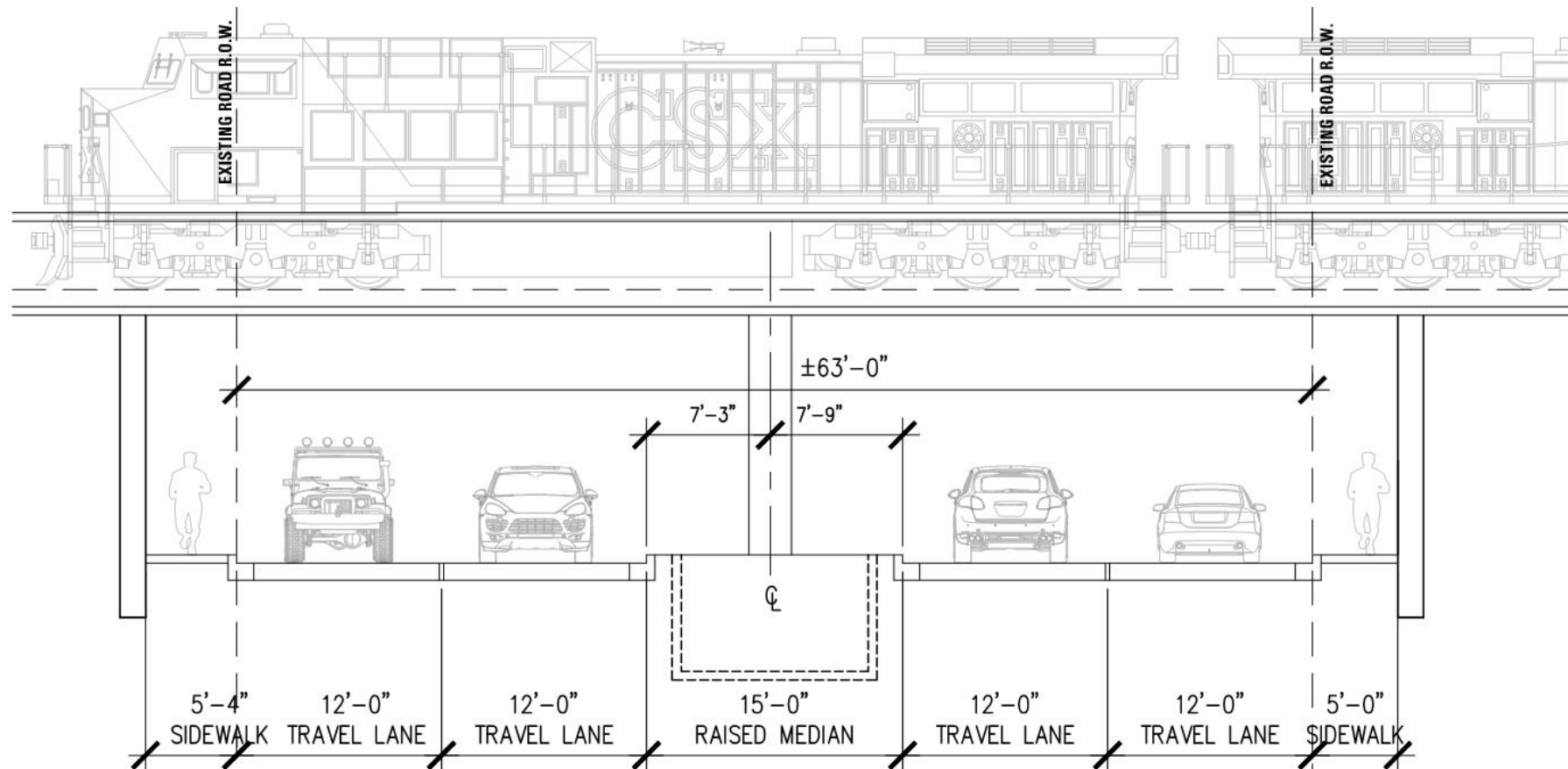


THE LOOP

TYPICAL STREET SECTIONS AT VICTORY AVE



PROPOSED CONDITION



EXISTING CONDITION

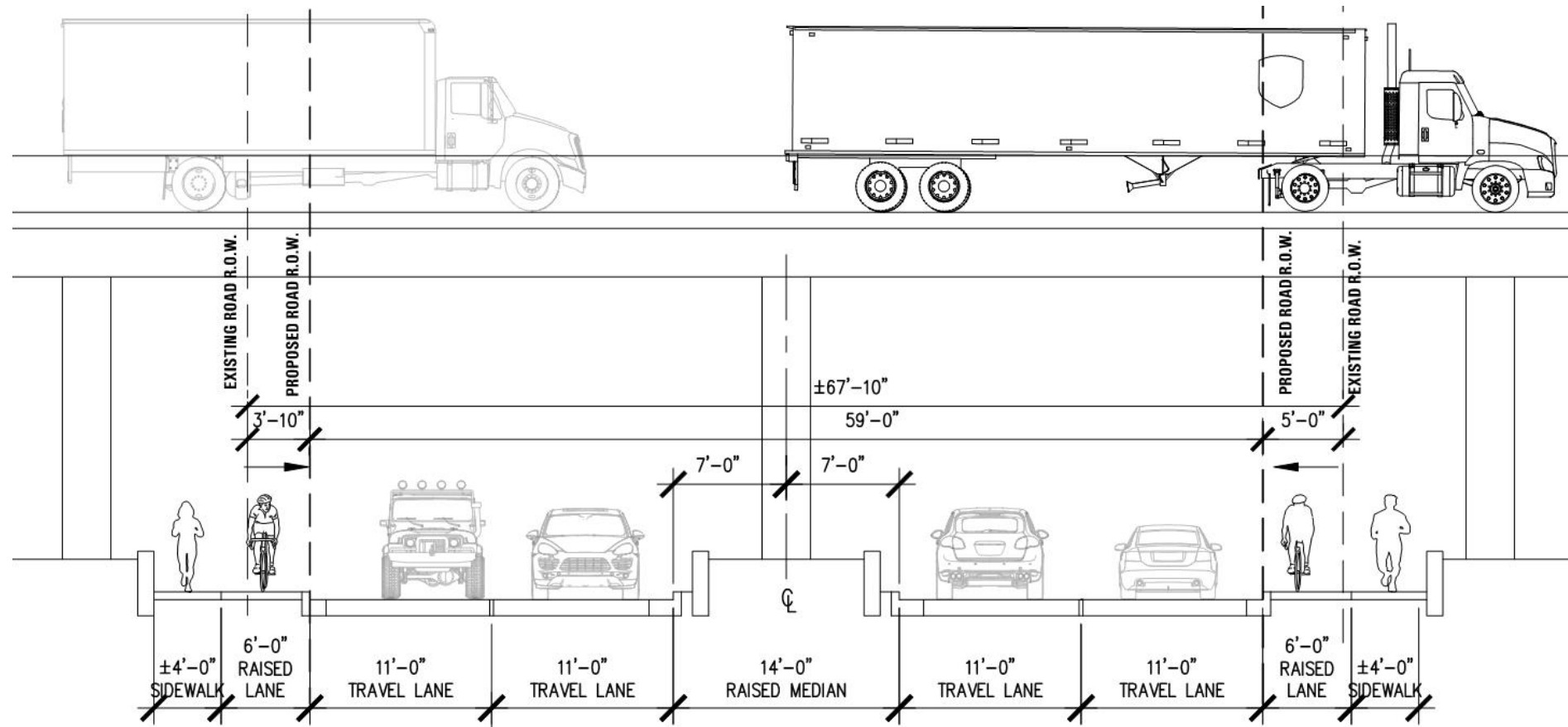


PROPOSED CONDITION

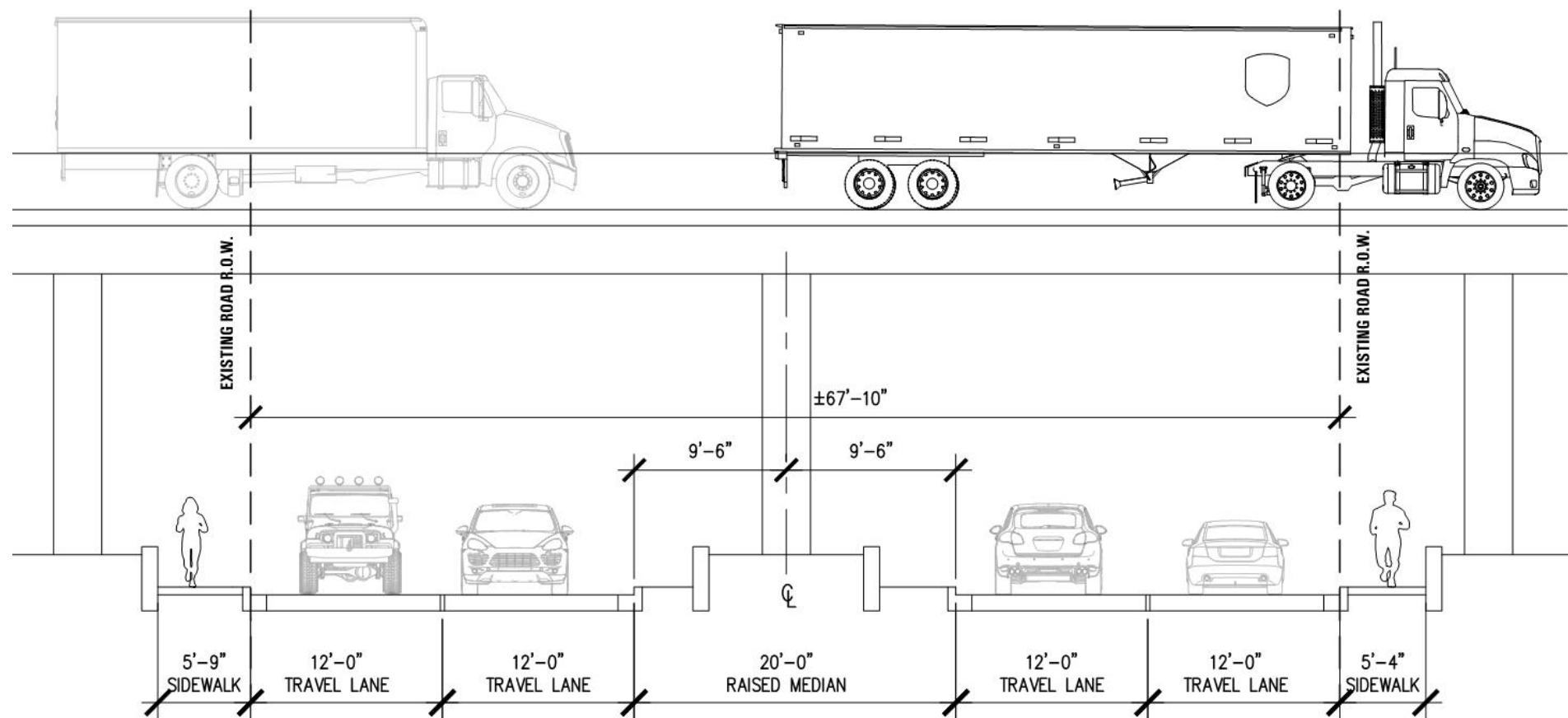


EXISTING CONDITION

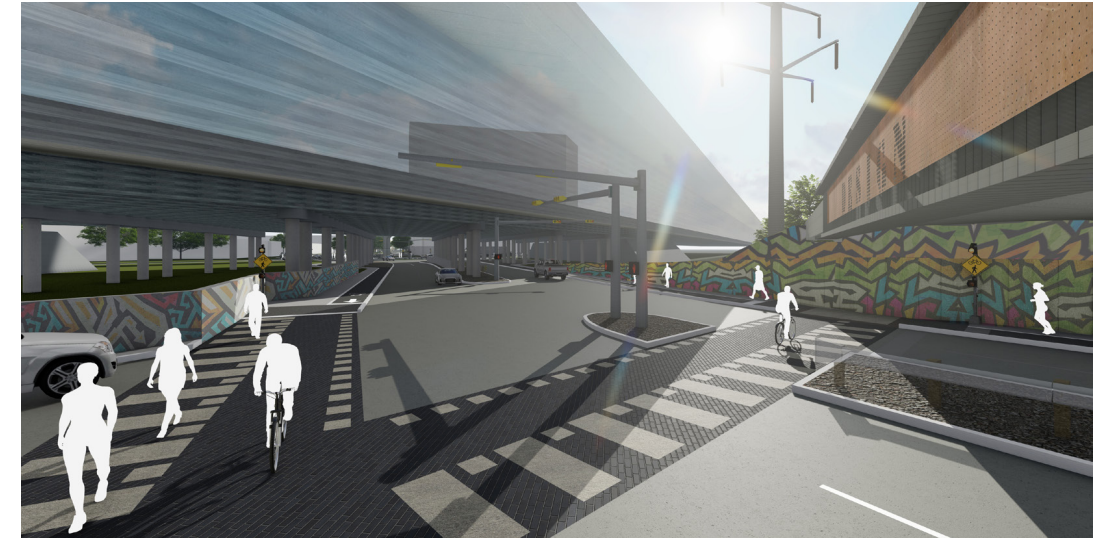
TYPICAL STREET SECTIONS AT VICTORY AVE



PROPOSED CONDITION



EXISTING CONDITION



PROPOSED CONDITION



EXISTING CONDITION

VIEW
07

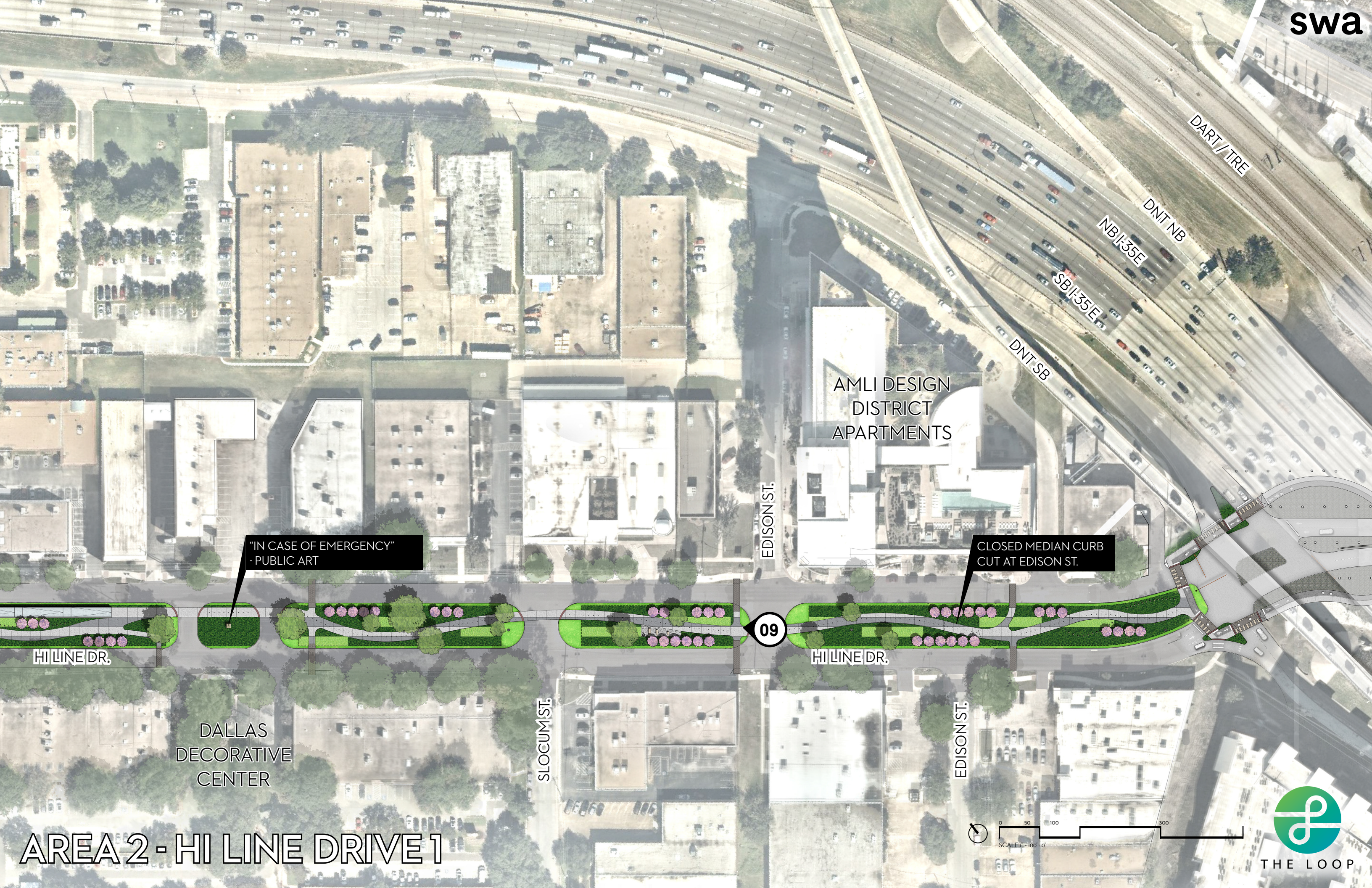
swa



HI LINE - SB I-35E







AMLI DESIGN
DISTRICT
APARTMENTS

"IN CASE OF EMERGENCY"
- PUBLIC ART

CLOSED MEDIAN CURB
CUT AT EDISON ST.

09

HI LINE DR.

HI LINE DR.

DALLAS
DECORATIVE
CENTER

SLOCUM ST.

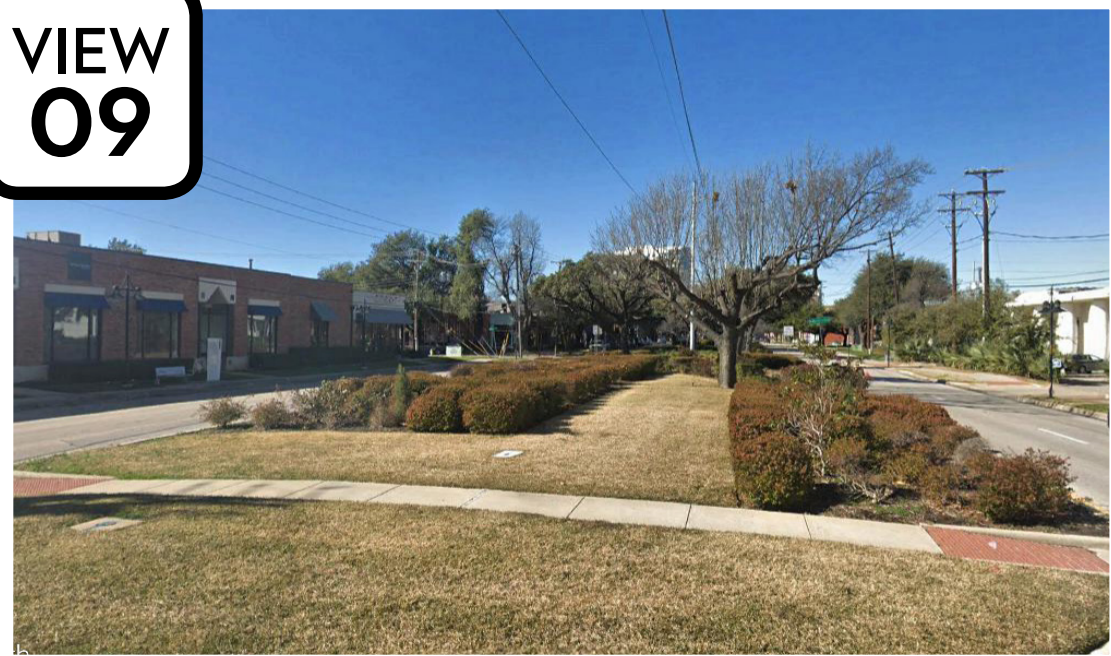
EDISON ST.

AREA 2 - HI LINE DRIVE 1

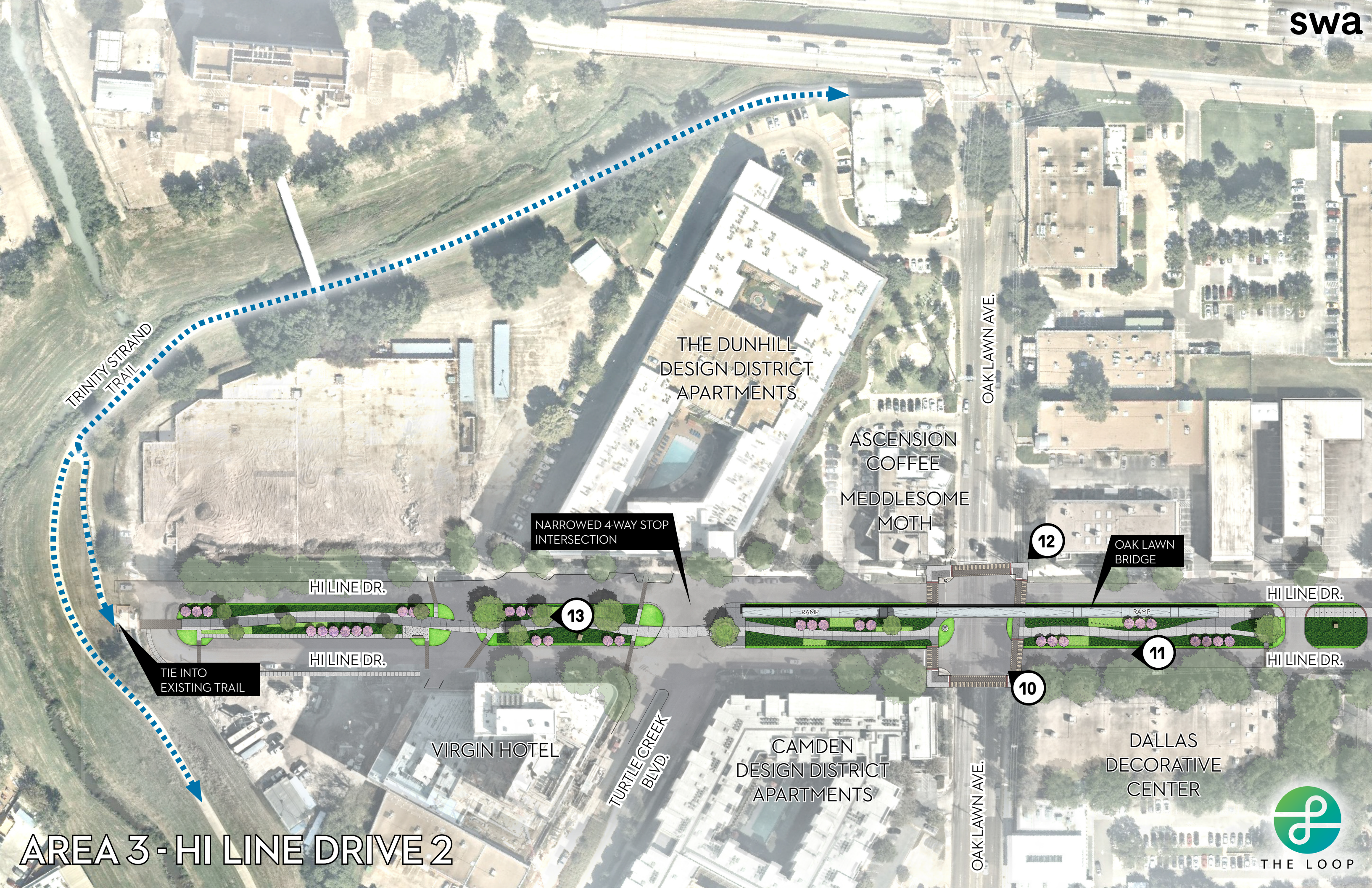


THE LOOP

VIEW
09



HI LINE MEDIAN



TRINITY STRAND TRAIL

THE DUNHILL DESIGN DISTRICT APARTMENTS

ASCENSION COFFEE
MEDDLESOME MOTH

OAK LAWN AVE.

NARROWED 4-WAY STOP INTERSECTION

HILINE DR.

HILINE DR.

TIE INTO EXISTING TRAIL

13

12

OAK LAWN BRIDGE

HILINE DR.

11

HILINE DR.

10

VIRGIN HOTEL

TURTLE CREEK BLVD.

CAMDEN DESIGN DISTRICT APARTMENTS

DALLAS DECORATIVE CENTER

OAK LAWN AVE.

AREA 3 - HI LINE DRIVE 2



THE LOOP



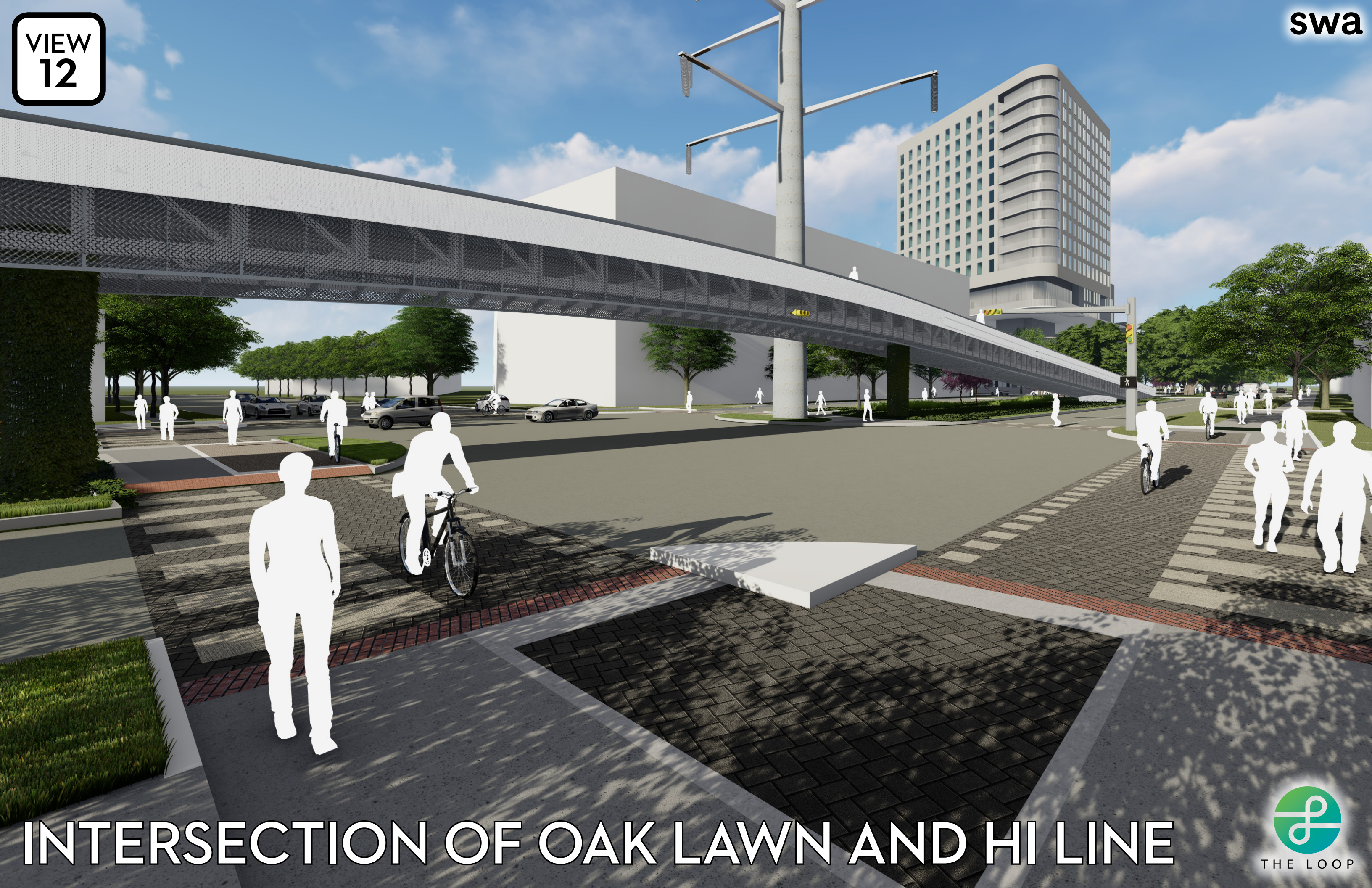
OAK LAWN BRIDGE BIRDS-EYE

VIEW
11

swa



HI LINE MEDIAN AT OAK LAWN BRIDGE



INTERSECTION OF OAK LAWN AND HI LINE



HI LINE MEDIAN TO TRINITY STRAND TRAIL