

JOE POOL LAKE DAM

Legend

- Highways
- Major Streets
- Streets
- Watersheds
- City Limit
- Lakes
- Storm Water Outfalls

- #### Facility Inspections
- Permitted - (0)
 - SARA 313 - (0)
 - Permitted and SARA 313 - (0)

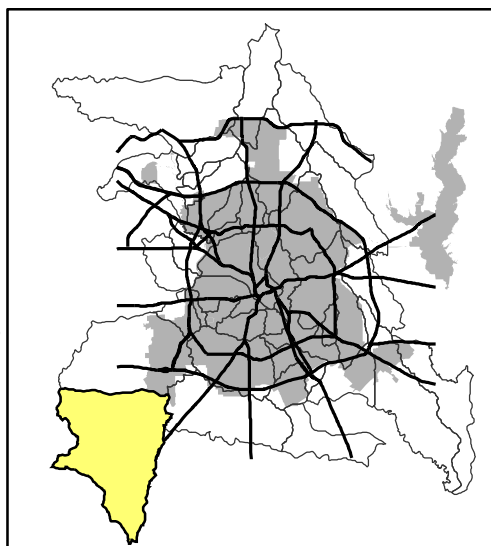
- #### Water Quality Monitoring Sites
- Active **
 - Not Active **
 - Wet Weather Sites

Water Quality Ratings

- Non Impaired
- Slightly Impaired
- Moderately Impaired

Land Use

- Airports - 0%
- Commercial - 1.27%
- Parks - 4.24%
- Government/Education - 0.73%
- Industrial - 4.12%
- Infrastructure - 0.89%
- Residential - 9.27%
- Undeveloped - 69.46%
- Water - 10.01%



Total Area in Acres - 59,440
 Estimated Population For Watershed Inside City = 3848
 Highest Elevation = 874 feet
 Lowest Elevation = 518 feet
 Average Elevation = 640 feet



Date Created: September 2005
 Coordinate System: NAD83 - US State Plane Feet
 Projection: Lambert Conformal Conic

NOT TO SCALE - FOR DISPLAY PURPOSES ONLY
 The accuracy is not to be taken / used as data produced by a
 Registered Professional Land Surveyor for the State of Texas.
 Use of the information is the sole responsibility of the user.

** Labels include site name and last date sampled.