



FY 2005 – 2006

Year End Service Request

Performance Reports

by

City Council District

And Citywide Summary

TABLE OF CONTENTS

4	Chart of Service Request Counts by City Council District
5	Citywide Service Level Performance Report
7	Service Level Performance Report for Council District 1
9	Service Level Performance Report for Council District 2
11	Service Level Performance Report for Council District 3
13	Service Level Performance Report for Council District 4
15	Service Level Performance Report for Council District 5
17	Service Level Performance Report for Council District 6
19	Service Level Performance Report for Council District 7
21	Service Level Performance Report for Council District 8
23	Service Level Performance Report for Council District 9
25	Service Level Performance Report for Council District 10
27	Service Level Performance Report for Council District 11
29	Service Level Performance Report for Council District 12

31 Service Level Performance Report for Council District 13

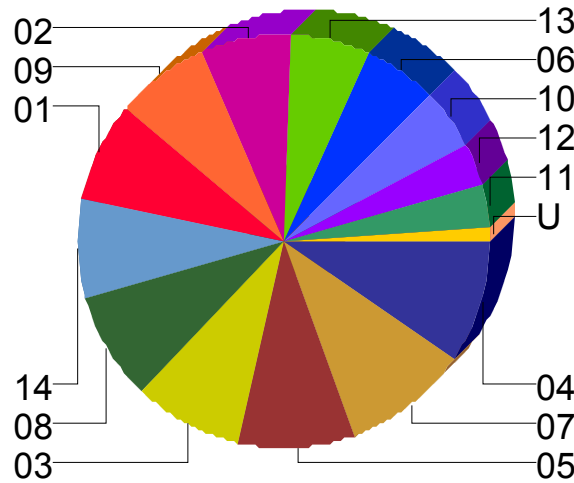
33 Service Level Performance Report for Council District 14

**35 Service Level Performance Report where the Council District
is Unknown**



City of Dallas

Council District Report For YTD Through September 2006



Council District	SRs Created	% of CityWide Total	% of All SRs On Time
01	25,841	7.7%	94.0%
02	23,449	7.0%	91.8%
03	28,966	8.6%	93.3%
04	32,944	9.8%	93.0%
05	30,629	9.1%	92.9%
06	19,837	5.9%	93.2%
07	32,513	9.7%	91.7%
08	27,981	8.3%	93.8%
09	25,215	7.5%	94.1%
10	15,739	4.7%	95.3%
11	11,116	3.3%	94.9%
12	11,463	3.4%	94.8%
13	20,286	6.0%	93.3%
14	25,982	7.7%	92.8%
U	3,716	1.1%	89.2%
Totals	335,677	100.0%	93.2%

NOTE: Values represent status as of the run date and time.

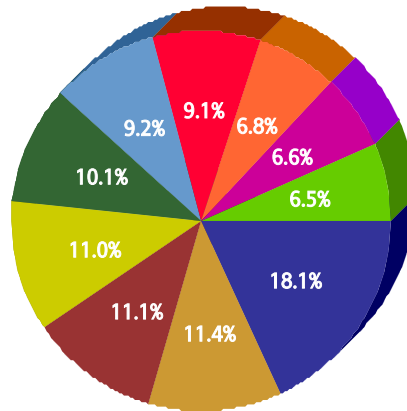


For Citywide

FY 2005/2006

Top 10 Services

SR Type	Service Request Count
High Weeds - DCC	27,342
Dead Animal Pick Up - SAN	17,220
Animal - Loose Aggressive - DCC	16,828
Litter - DCC	16,674
Recycling ROLL CART Registration - SAN	15,276
Animal - Confined - DCC	13,962
Roll Cart - SAN	13,815
Obstruction Alley/Sidewalk/Street - DCC	10,370
Junk Motor Vehicle - DCC	10,044
24 Hour Parking/Parking Violations - DPD	9,909



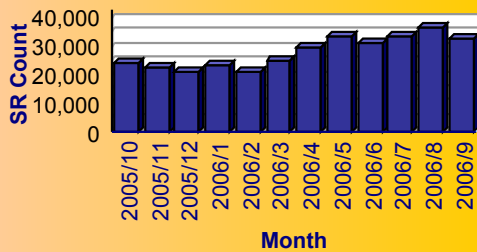
Service

- High Weeds - DCC
- Dead Animal Pick Up - SAN
- Animal - Loose Aggressive - DCC
- Litter - DCC
- Recycling ROLL CART Registration - SAN
- Animal - Confined - DCC
- Roll Cart - SAN
- Obstruction Alley/Sidewalk/Street - DCC
- Junk Motor Vehicle - DCC
- 24 Hour Parking/Parking Violations - DPD

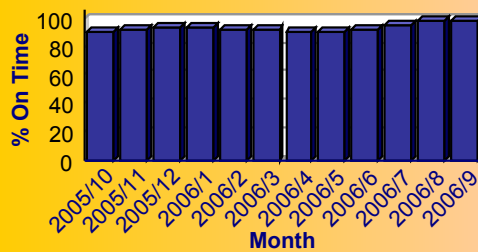
Summary - All Services Requested

SR Count	Total Closed	Total Closed On Time	% Closed on Time	Total Open	Total Open On Time	% Open on Time	Total On Time %
335,677	307,315	285,184	92.8%	28,362	27,817	98.1%	93.2%

Monthly Trend of Services Requested



Monthly Trend of % SRs Closed On Time





City of Dallas Service Level Performance Report by Council District

For Citywide

FY 2005/2006

Performance on the Top 20 by SR Volume Created During the Reporting Period

Row Number	Top Services Requested	SRs Created	Open SRs	Open, On Time	% Open, On Time	SLA Goal	Avg Days to Close	Total Closed	% of SRs Closed	Total Closed On Time	% Closed On Time	All SRs On Time	% of All SRs On Time
1	High Weeds - DCC	27,342	2,095	2,085	99.5%	38	18.0	25,247	92.3%	22,504	89.1%	24,589	89.9%
2	Dead Animal Pick Up - SAN	17,220	11	0	0.0%	1	0.4	17,209	99.9%	17,050	99.1%	17,050	99.0%
3	Animal - Loose Aggressive - DCC	16,828	6	0	0.0%	3	0.3	16,822	100.0%	16,712	99.3%	16,712	99.3%
4	Litter - DCC	16,674	664	641	96.5%	38	19.7	16,010	96.0%	14,235	88.9%	14,876	89.2%
5	Recycling ROLL CART Registration - SAN	15,276	15,265	15,265	100.0%	365	8.7	11	0.1%	11	100.0%	15,276	100.0%
6	Animal - Confined - DCC	13,962	14	0	0.0%	3	0.3	13,948	99.9%	13,837	99.2%	13,837	99.1%
7	Roll Cart - SAN	13,815	290	286	98.6%	10	6.7	13,525	97.9%	11,046	81.7%	11,332	82.0%
8	Obstruction Alley/Sidewalk/Street - DCC	10,370	962	936	97.3%	60	23.7	9,408	90.7%	8,874	94.3%	9,810	94.6%
9	Junk Motor Vehicle - DCC	10,044	927	920	99.2%	126	35.8	9,117	90.8%	8,836	96.9%	9,756	97.1%
10	24 Hour Parking/Parking Violations - DPD	9,909	106	95	89.6%	10	4.0	9,803	98.9%	9,459	96.5%	9,554	96.4%
11	Bulky Trash Violations - DCC	9,745	49	45	91.8%	14	5.1	9,696	99.5%	8,954	92.3%	8,999	92.3%
12	Garbage - Missed - SAN	9,682	50	35	70.0%	6	2.9	9,632	99.5%	8,987	93.3%	9,022	93.2%
13	Substandard Structure - DCC	8,559	3,598	3,591	99.8%	365	73.3	4,961	58.0%	4,961	100.0%	8,552	99.9%
14	Fire Inspection - DFD	7,985	491	408	83.1%	60	30.5	7,494	93.9%	6,379	85.1%	6,787	85.0%
15	Animal - Loose - DCC	7,779	570	570	100.0%	40	18.5	7,209	92.7%	6,593	91.5%	7,163	92.1%
16	Animal - Sick/Injured - DCC	7,371	4	0	0.0%	3	0.2	7,367	99.9%	7,301	99.1%	7,301	99.1%
17	Street Spillage/Debris in Right of Way-Hazardous-STS	6,964	0	0	N/A	1	0.1	6,964	100.0%	6,902	99.1%	6,902	99.1%
18	Illegal Outside Storage - DCC	5,757	308	288	93.5%	38	22.9	5,449	94.6%	4,498	82.5%	4,786	83.1%
19	Parking - Unapproved Surface - Eve/Weekends - DCC	5,239	10	7	70.0%	10	1.3	5,229	99.8%	5,089	97.3%	5,096	97.3%
20	Street Repair - Routine-STS	3,457	183	170	92.9%	90	25.0	3,274	94.7%	2,979	91.0%	3,149	91.1%

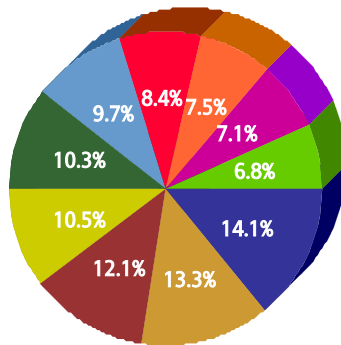


for 01

FY 2005/2006

Top 10 Services

SR Type	Service Request Count
High Weeds - DCC	1,694
Animal - Loose Aggressive - DCC	1,599
Dead Animal Pick Up - SAN	1,456
Litter - DCC	1,262
24 Hour Parking/Parking Violations - DPD	1,238
Parking - Unapproved Surface - Eve/Weekends - DCC	1,168
Junk Motor Vehicle - DCC	1,005
Animal - Confined - DCC	902
Obstruction Alley/Sidewalk/Street - DCC	855
Illegal Outside Storage - DCC	814



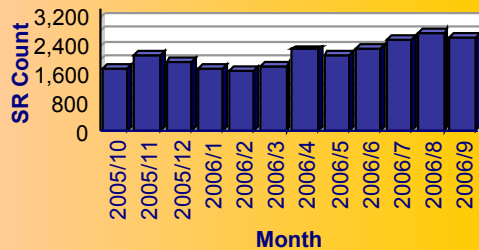
Service

- High Weeds - DCC
- Animal - Loose Aggressive - DCC
- Dead Animal Pick Up - SAN
- Litter - DCC
- 24 Hour Parking/Parking Violations - DPD
- Parking - Unapproved Surface - Eve/Weekends - DCC
- Junk Motor Vehicle - DCC
- Animal - Confined - DCC
- Obstruction Alley/Sidewalk/Street - DCC
- Illegal Outside Storage - DCC

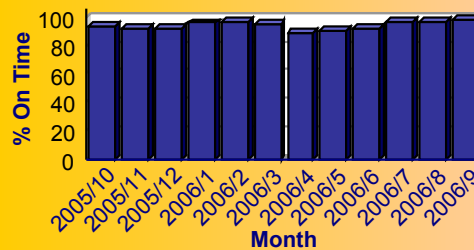
Summary - All Services Requested

SR Count	Total Closed	Total Closed On Time	% Closed on Time	Total Open	Total Open On Time	% Open on Time	Total On Time %
25,841	24,027	22,504	93.7%	1,814	1,777	98.0%	94.0%

Monthly Trend of Services Requested



Monthly Trend of % SRs Closed On Time





City of Dallas Service Level Performance Report by Council District

for 01

FY 2005/2006

Performance on the Top 20 by SR Volume Created During the Reporting Period

Row Number	Top Services Requested	SRs Created	Open SRs	Open, On Time	% Open, On Time	SLA Goal	Avg Days to Close	Total Closed	% of SRs Closed	Total Closed On Time	% Closed On Time	All SRs On Time	% of All SRs On Time
1	High Weeds - DCC	1,694	259	259	100.0%	38	18.9	1,435	84.7%	1,271	88.6%	1,530	90.3%
2	Animal - Loose Aggressive - DCC	1,599	2	0	0.0%	3	0.2	1,597	99.9%	1,585	99.2%	1,585	99.1%
3	Dead Animal Pick Up - SAN	1,456	0	0	N/A	1	0.4	1,456	100.0%	1,443	99.1%	1,443	99.1%
4	Litter - DCC	1,262	67	66	98.5%	38	20.2	1,195	94.7%	1,063	89.0%	1,129	89.5%
5	24 Hour Parking/Parking Violations - DPD	1,238	23	19	82.6%	10	3.9	1,215	98.1%	1,196	98.4%	1,215	98.1%
6	Parking - Unapproved Surface - Eve/Weekends - DCC	1,168	2	2	100.0%	10	0.9	1,166	99.8%	1,151	98.7%	1,153	98.7%
7	Junk Motor Vehicle - DCC	1,005	113	113	100.0%	126	31.8	892	88.8%	880	98.7%	993	98.8%
8	Animal - Confined - DCC	902	1	0	0.0%	3	0.4	901	99.9%	894	99.2%	894	99.1%
9	Obstruction Alley/Sidewalk/Street - DCC	855	167	167	100.0%	60	23.9	688	80.5%	648	94.2%	815	95.3%
10	Illegal Outside Storage - DCC	814	35	35	100.0%	38	23.0	779	95.7%	652	83.7%	687	84.4%
11	Roll Cart - SAN	784	15	15	100.0%	10	5.1	769	98.1%	704	91.5%	719	91.7%
12	Animal - Loose - DCC	695	50	50	100.0%	40	17.9	645	92.8%	598	92.7%	648	93.2%
13	Substandard Structure - DCC	610	316	316	100.0%	365	89.9	294	48.2%	294	100.0%	610	100.0%
14	Bulky Trash Violations - DCC	589	6	6	100.0%	14	5.4	583	99.0%	529	90.7%	535	90.8%
15	Garbage - Missed - SAN	580	6	1	16.7%	6	2.4	574	99.0%	554	96.5%	555	95.7%
16	Signs - Other - DCC	568	5	5	100.0%	21	24.3	563	99.1%	330	58.6%	335	59.0%
17	Illegal Land Use (Residential/Business) - DCC	564	7	7	100.0%	60	15.6	557	98.8%	532	95.5%	539	95.6%
18	Recycling ROLL CART Registration - SAN	534	533	533	100.0%	365	0.0	1	0.2%	1	100.0%	534	100.0%
19	Dead Animal - Clinic Pick Up - SAN	528	0	0	N/A	2	0.0	528	100.0%	527	99.8%	527	99.8%
20	Animal - Sick/Injured - DCC	494	2	0	0.0%	3	0.2	492	99.6%	486	98.8%	486	98.4%

R-csr059-cmoS V1.0

Page: 2

Run Date: Oct/5/2006 11:31:56 AM

NOTE: Values represent status as of the run date and time.

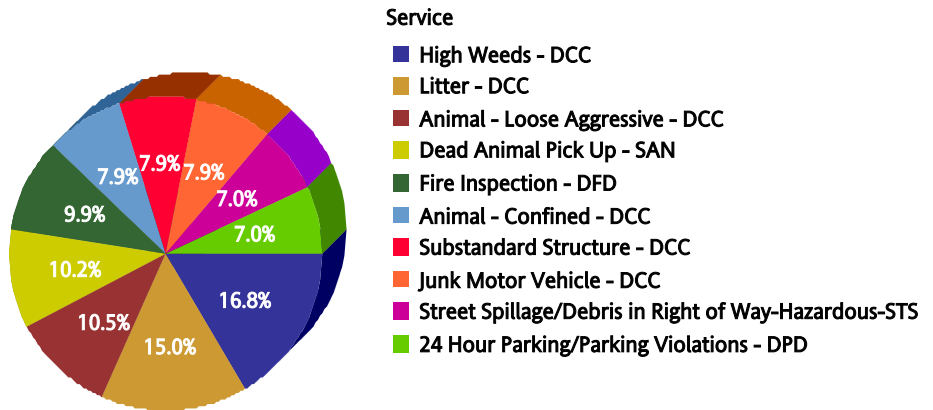


for 02

FY 2005/2006

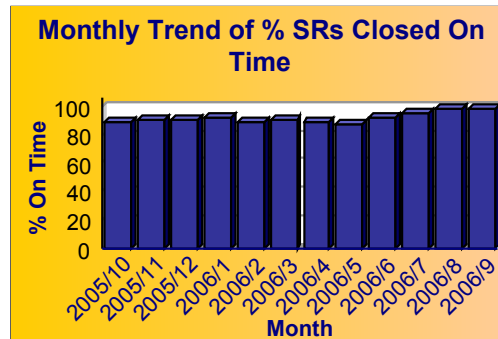
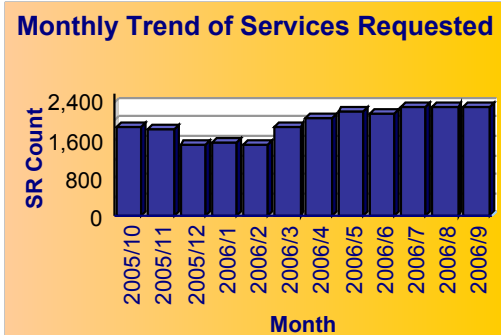
Top 10 Services

SR Type	Service Request Count
High Weeds - DCC	1,558
Litter - DCC	1,393
Animal - Loose Aggressive - DCC	976
Dead Animal Pick Up - SAN	943
Fire Inspection - DFD	916
Animal - Confined - DCC	736
Substandard Structure - DCC	731
Junk Motor Vehicle - DCC	729
Street Spillage/Debris in Right of Way-Hazardous-ST5	652
24 Hour Parking/Parking Violations - DPD	649



Summary - All Services Requested

SR Count	Total Closed	Total Closed On Time	% Closed on Time	Total Open	Total Open On Time	% Open on Time	Total On Time %
23,449	22,027	20,163	91.5%	1,422	1,368	96.2%	91.8%





City of Dallas Service Level Performance Report by Council District

for 02

FY 2005/2006

Performance on the Top 20 by SR Volume Created During the Reporting Period

Row Number	Top Services Requested	SRs Created	Open SRs	Open, On Time	% Open, On Time	SLA Goal	Avg Days to Close	Total Closed	% of SRs Closed	Total Closed On Time	% Closed On Time	All SRs On Time	% of All SRs On Time
1	High Weeds - DCC	1,558	141	141	100.0%	38	20.9	1,417	90.9%	1,219	86.0%	1,360	87.3%
2	Litter - DCC	1,393	47	47	100.0%	38	25.0	1,346	96.6%	1,131	84.0%	1,178	84.6%
3	Animal - Loose Aggressive - DCC	976	0	0	N/A	3	0.3	976	100.0%	966	99.0%	966	99.0%
4	Dead Animal Pick Up - SAN	943	0	0	N/A	1	0.3	943	100.0%	931	98.7%	931	98.7%
5	Fire Inspection - DFD	916	76	66	86.8%	60	32.9	840	91.7%	695	82.7%	761	83.1%
6	Animal - Confined - DCC	736	0	0	N/A	3	0.6	736	100.0%	730	99.2%	730	99.2%
7	Substandard Structure - DCC	731	320	319	99.7%	365	71.3	411	56.2%	411	100.0%	730	99.9%
8	Junk Motor Vehicle - DCC	729	74	74	100.0%	126	35.9	655	89.8%	636	97.1%	710	97.4%
9	Street Spillage/Debris in Right of Way-Hazardous-STS	652	0	0	N/A	1	0.0	652	100.0%	650	99.7%	650	99.7%
10	24 Hour Parking/Parking Violations - DPD	649	5	5	100.0%	10	5.1	644	99.2%	590	91.6%	595	91.7%
11	Roll Cart - SAN	609	16	15	93.8%	10	7.9	593	97.4%	434	73.2%	449	73.7%
12	Garbage - Missed - SAN	600	2	2	100.0%	6	2.8	598	99.7%	559	93.5%	561	93.5%
13	Animal - Sick/Injured - DCC	499	1	0	0.0%	3	0.4	498	99.8%	491	98.6%	491	98.4%
14	Obstruction Alley/Sidewalk/Street - DCC	487	17	17	100.0%	60	27.1	470	96.5%	438	93.2%	455	93.4%
15	Graffiti Private Property - Residential/Commercial	479	43	37	86.0%	90	33.1	436	91.0%	415	95.2%	452	94.4%
16	Animal - Loose - DCC	473	34	34	100.0%	40	19.2	439	92.8%	391	89.1%	425	89.9%
17	Illegal Outside Storage - DCC	414	23	21	91.3%	38	25.8	391	94.4%	312	79.8%	333	80.4%
18	Bulky Trash Violations - DCC	411	1	1	100.0%	14	6.7	410	99.8%	361	88.0%	362	88.1%
19	Recycling ROLL CART Registration - SAN	381	380	380	100.0%	365	0.0	1	0.3%	1	100.0%	381	100.0%
20	Parking - Unapproved Surface - Eve/Weekends - DCC	293	0	0	N/A	10	1.9	293	100.0%	282	96.2%	282	96.2%

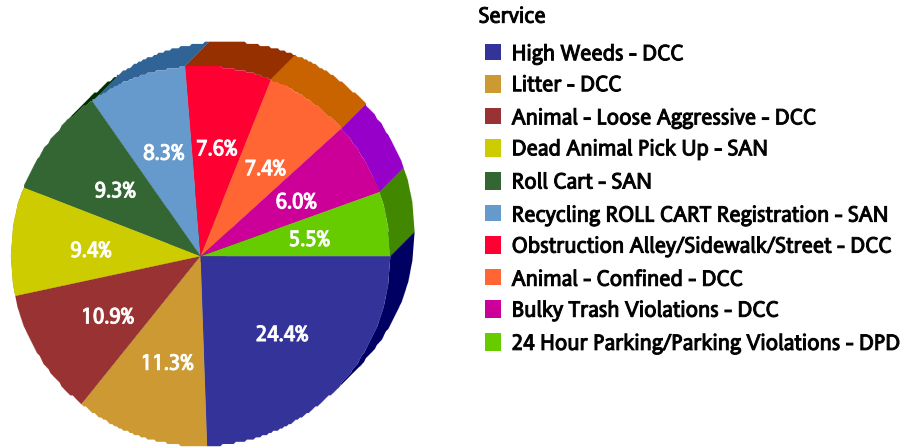


for 03

FY 2005/2006

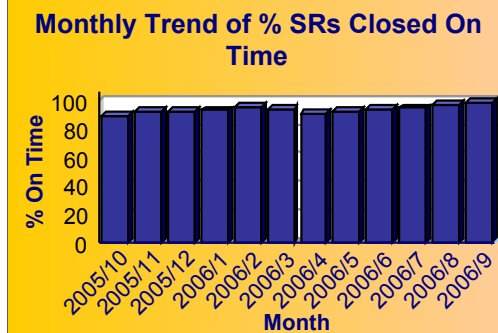
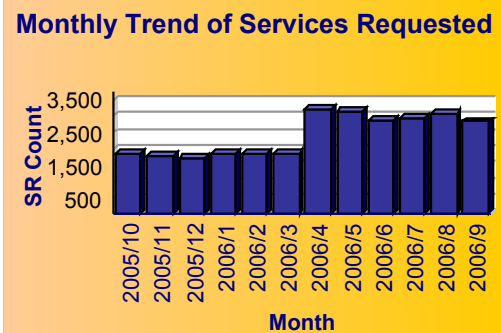
Top 10 Services

SR Type	Service Request Count
High Weeds - DCC	3,680
Litter - DCC	1,703
Animal - Loose Aggressive - DCC	1,637
Dead Animal Pick Up - SAN	1,410
Roll Cart - SAN	1,398
Recycling ROLL CART Registration - SAN	1,253
Obstruction Alley/Sidewalk/Street - DCC	1,140
Animal - Confined - DCC	1,112
Bulky Trash Violations - DCC	910
24 Hour Parking/Parking Violations - DPD	828



Summary - All Services Requested

SR Count	Total Closed	Total Closed On Time	% Closed on Time	Total Open	Total Open On Time	% Open on Time	Total On Time %
28,966	26,437	24,562	92.9%	2,529	2,471	97.7%	93.3%




City of Dallas Service Level Performance Report by Council District

for 03

FY 2005/2006

Performance on the Top 20 by SR Volume Created During the Reporting Period

Row Number	Top Services Requested	SRs Created	Open SRs	Open, On Time	% Open, On Time	SLA Goal	Avg Days to Close	Total Closed	% of SRs Closed	Total Closed On Time	% Closed On Time	All SRs On Time	% of All SRs On Time
1	High Weeds - DCC	3,680	307	305	99.3%	38	17.5	3,373	91.7%	3,021	89.6%	3,326	90.4%
2	Litter - DCC	1,703	91	91	100.0%	38	18.9	1,612	94.7%	1,402	87.0%	1,493	87.7%
3	Animal - Loose Aggressive - DCC	1,637	3	0	0.0%	3	0.2	1,634	99.8%	1,623	99.3%	1,623	99.1%
4	Dead Animal Pick Up - SAN	1,410	1	0	0.0%	1	0.4	1,409	99.9%	1,398	99.2%	1,398	99.1%
5	Roll Cart - SAN	1,398	30	30	100.0%	10	5.5	1,368	97.9%	1,227	89.7%	1,257	89.9%
6	Recycling ROLL CART Registration - SAN	1,253	1,251	1,251	100.0%	365	28.0	2	0.2%	2	100.0%	1,253	100.0%
7	Obstruction Alley/Sidewalk/Street - DCC	1,140	112	95	84.8%	60	25.1	1,028	90.2%	973	94.6%	1,068	93.7%
8	Animal - Confined - DCC	1,112	2	0	0.0%	3	0.2	1,110	99.8%	1,107	99.7%	1,107	99.6%
9	Bulky Trash Violations - DCC	910	5	4	80.0%	14	4.2	905	99.5%	851	94.0%	855	94.0%
10	24 Hour Parking/Parking Violations - DPD	828	13	11	84.6%	10	4.4	815	98.4%	783	96.1%	794	95.9%
11	Junk Motor Vehicle - DCC	787	94	93	98.9%	126	31.0	693	88.1%	687	99.1%	780	99.1%
12	Animal - Loose - DCC	759	60	60	100.0%	40	18.1	699	92.1%	632	90.4%	692	91.2%
13	Illegal Outside Storage - DCC	688	36	30	83.3%	38	20.5	652	94.8%	574	88.0%	604	87.8%
14	Animal - Sick/Injured - DCC	609	0	0	N/A	3	0.2	609	100.0%	606	99.5%	606	99.5%
15	Street Spillage/Debris in Right of Way-Hazardous-STs	606	0	0	N/A	1	0.0	606	100.0%	602	99.3%	602	99.3%
16	Garbage - Missed - SAN	568	2	2	100.0%	6	2.5	566	99.6%	520	91.9%	522	91.9%
17	Substandard Structure - DCC	550	236	236	100.0%	365	75.1	314	57.1%	314	100.0%	550	100.0%
18	Fire Inspection - DFD	487	33	31	93.9%	60	34.6	454	93.2%	369	81.3%	400	82.1%
19	Parking - Unapproved Surface - Eve/Weekends - DCC	398	0	0	N/A	10	1.5	398	100.0%	383	96.2%	383	96.2%
20	Tree down/low limbs - Emergency-STs	340	0	0	N/A	5	0.2	340	100.0%	339	99.7%	339	99.7%

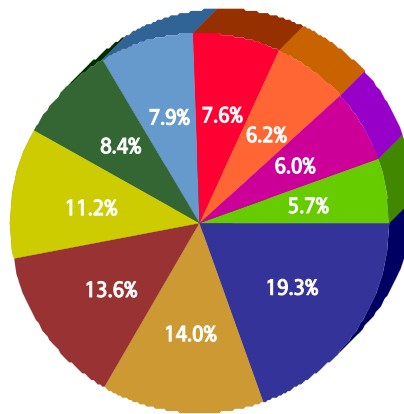


for 04

FY 2005/2006

Top 10 Services

SR Type	Service Request Count
High Weeds - DCC	3,382
Dead Animal Pick Up - SAN	2,441
Animal - Loose Aggressive - DCC	2,386
Litter - DCC	1,955
Animal - Confined - DCC	1,470
Roll Cart - SAN	1,385
Junk Motor Vehicle - DCC	1,332
Garbage - Missed - SAN	1,093
Bulky Trash Violations - DCC	1,057
Animal - Loose - DCC	990



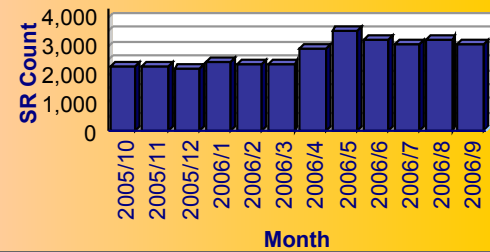
Service

- High Weeds - DCC
- Dead Animal Pick Up - SAN
- Animal - Loose Aggressive - DCC
- Litter - DCC
- Animal - Confined - DCC
- Roll Cart - SAN
- Junk Motor Vehicle - DCC
- Garbage - Missed - SAN
- Bulky Trash Violations - DCC
- Animal - Loose - DCC

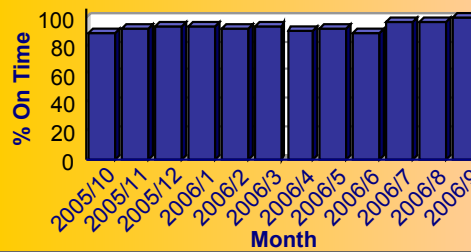
Summary - All Services Requested

SR Count	Total Closed	Total Closed On Time	% Closed on Time	Total Open	Total Open On Time	% Open on Time	Total On Time %
32,944	31,143	28,860	92.7%	1,801	1,770	98.3%	93.0%

Monthly Trend of Services Requested



Monthly Trend of % SRs Closed On Time





City of Dallas Service Level Performance Report by Council District

for 04

FY 2005/2006

Performance on the Top 20 by SR Volume Created During the Reporting Period

Row Number	Top Services Requested	SRs Created	Open SRs	Open, On Time	% Open, On Time	SLA Goal	Avg Days to Close	Total Closed	% of SRs Closed	Total Closed On Time	% Closed On Time	All SRs On Time	% of All SRs On Time
1	High Weeds - DCC	3,382	261	258	98.9%	38	19.7	3,121	92.3%	2,657	85.1%	2,915	86.2%
2	Dead Animal Pick Up - SAN	2,441	2	0	0.0%	1	0.4	2,439	99.9%	2,412	98.9%	2,412	98.8%
3	Animal - Loose Aggressive - DCC	2,386	0	0	N/A	3	0.2	2,386	100.0%	2,375	99.5%	2,375	99.5%
4	Litter - DCC	1,955	60	59	98.3%	38	19.8	1,895	96.9%	1,656	87.4%	1,715	87.7%
5	Animal - Confined - DCC	1,470	3	0	0.0%	3	0.3	1,467	99.8%	1,456	99.3%	1,456	99.0%
6	Roll Cart - SAN	1,385	30	29	96.7%	10	5.9	1,355	97.8%	1,161	85.7%	1,190	85.9%
7	Junk Motor Vehicle - DCC	1,332	108	108	100.0%	126	39.7	1,224	91.9%	1,185	96.8%	1,293	97.1%
8	Garbage - Missed - SAN	1,093	2	2	100.0%	6	3.2	1,091	99.8%	985	90.3%	987	90.3%
9	Bulky Trash Violations - DCC	1,057	5	5	100.0%	14	5.2	1,052	99.5%	969	92.1%	974	92.1%
10	Animal - Loose - DCC	990	72	72	100.0%	40	18.5	918	92.7%	847	92.3%	919	92.8%
11	24 Hour Parking/Parking Violations - DPD	966	7	7	100.0%	10	3.0	959	99.3%	953	99.4%	960	99.4%
12	Substandard Structure - DCC	963	467	467	100.0%	365	69.8	496	51.5%	496	100.0%	963	100.0%
13	Obstruction Alley/Sidewalk/Street - DCC	960	155	154	99.4%	60	24.5	805	83.9%	756	93.9%	910	94.8%
14	Animal - Sick/Injured - DCC	921	0	0	N/A	3	0.2	921	100.0%	911	98.9%	911	98.9%
15	Parking - Unapproved Surface - Eve/Weekends - DCC	864	1	1	100.0%	10	1.4	863	99.9%	841	97.5%	842	97.5%
16	Illegal Outside Storage - DCC	605	24	23	95.8%	38	25.5	581	96.0%	442	76.1%	465	76.9%
17	Dead Animal - Clinic Pick Up - SAN	511	0	0	N/A	2	0.0	511	100.0%	510	99.8%	510	99.8%
18	Open and Vacant Structure - DCC	431	10	10	100.0%	30	10.7	421	97.7%	371	88.1%	381	88.4%
19	Animal - Cruelty - DCC	416	0	0	N/A	30	0.6	416	100.0%	416	100.0%	416	100.0%
20	Fire Inspection - DFD	352	16	12	75.0%	60	31.9	336	95.5%	278	82.7%	290	82.4%

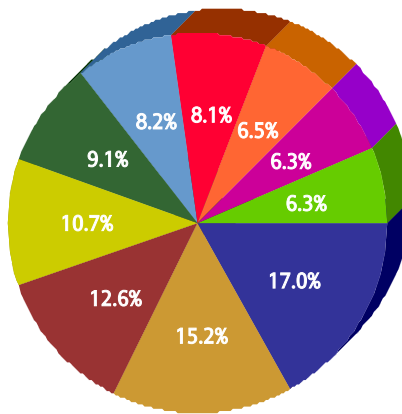


for 05

FY 2005/2006

Top 10 Services

SR Type	Service Request Count
High Weeds - DCC	2,762
Animal - Loose Aggressive - DCC	2,466
Dead Animal Pick Up - SAN	2,051
Litter - DCC	1,737
Animal - Confined - DCC	1,477
Junk Motor Vehicle - DCC	1,340
Roll Cart - SAN	1,313
Garbage - Missed - SAN	1,057
Bulky Trash Violations - DCC	1,028
Substandard Structure - DCC	1,019



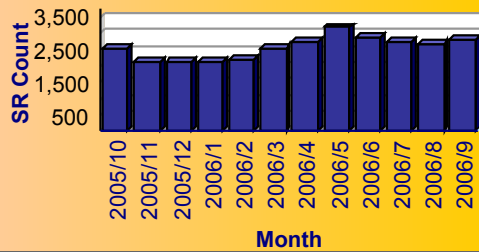
Service

- High Weeds - DCC
- Animal - Loose Aggressive - DCC
- Dead Animal Pick Up - SAN
- Litter - DCC
- Animal - Confined - DCC
- Junk Motor Vehicle - DCC
- Roll Cart - SAN
- Garbage - Missed - SAN
- Bulky Trash Violations - DCC
- Substandard Structure - DCC

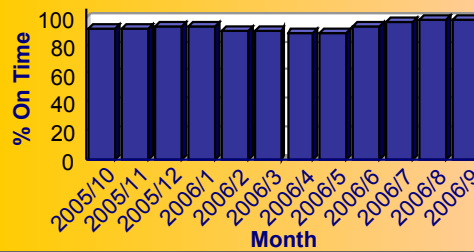
Summary - All Services Requested

SR Count	Total Closed	Total Closed On Time	% Closed on Time	Total Open	Total Open On Time	% Open on Time	Total On Time %
30,629	29,106	26,981	92.7%	1,523	1,482	97.3%	92.9%

Monthly Trend of Services Requested



Monthly Trend of % SRs Closed On Time





City of Dallas Service Level Performance Report by Council District

for 05

FY 2005/2006

Performance on the Top 20 by SR Volume Created During the Reporting Period

Row Number	Top Services Requested	SRs Created	Open SRs	Open, On Time	% Open, On Time	SLA Goal	Avg Days to Close	Total Closed	% of SRs Closed	Total Closed On Time	% Closed On Time	All SRs On Time	% of All SRs On Time
1	High Weeds - DCC	2,762	171	171	100.0%	38	19.1	2,591	93.8%	2,318	89.5%	2,489	90.1%
2	Animal - Loose Aggressive - DCC	2,466	1	0	0.0%	3	0.3	2,465	100.0%	2,455	99.6%	2,455	99.6%
3	Dead Animal Pick Up - SAN	2,051	1	0	0.0%	1	0.3	2,050	100.0%	2,032	99.1%	2,032	99.1%
4	Litter - DCC	1,737	44	41	93.2%	38	20.1	1,693	97.5%	1,531	90.4%	1,572	90.5%
5	Animal - Confined - DCC	1,477	1	0	0.0%	3	0.4	1,476	99.9%	1,457	98.7%	1,457	98.6%
6	Junk Motor Vehicle - DCC	1,340	142	140	98.6%	126	39.7	1,198	89.4%	1,152	96.2%	1,292	96.4%
7	Roll Cart - SAN	1,313	32	31	96.9%	10	7.2	1,281	97.6%	992	77.4%	1,023	77.9%
8	Garbage - Missed - SAN	1,057	2	1	50.0%	6	3.0	1,055	99.8%	955	90.5%	956	90.4%
9	Bulky Trash Violations - DCC	1,028	4	4	100.0%	14	4.6	1,024	99.6%	947	92.5%	951	92.5%
10	Substandard Structure - DCC	1,019	355	355	100.0%	365	73.5	664	65.2%	664	100.0%	1,019	100.0%
11	24 Hour Parking/Parking Violations - DPD	1,006	6	5	83.3%	10	2.8	1,000	99.4%	994	99.4%	999	99.3%
12	Animal - Loose - DCC	952	77	77	100.0%	40	18.7	875	91.9%	804	91.9%	881	92.5%
13	Obstruction Alley/Sidewalk/Street - DCC	948	61	60	98.4%	60	26.9	887	93.6%	809	91.2%	869	91.7%
14	Animal - Sick/Injured - DCC	811	1	0	0.0%	3	0.2	810	99.9%	802	99.0%	802	98.9%
15	Illegal Outside Storage - DCC	532	21	20	95.2%	38	28.1	511	96.1%	390	76.3%	410	77.1%
16	Fire Inspection - DFD	480	34	32	94.1%	60	30.4	446	92.9%	369	82.7%	401	83.5%
17	Parking - Unapproved Surface - Eve/Weekends - DCC	473	1	0	0.0%	10	1.5	472	99.8%	454	96.2%	454	96.0%
18	Animal - Cruelty - DCC	391	0	0	N/A	30	0.6	391	100.0%	391	100.0%	391	100.0%
19	Recycling ROLL CART Registration - SAN	338	338	338	100.0%	365		0	0.0%	0	N/A	338	100.0%
20	Street Repair - Routine-ST5	321	23	23	100.0%	90	22.6	298	92.8%	274	91.9%	297	92.5%

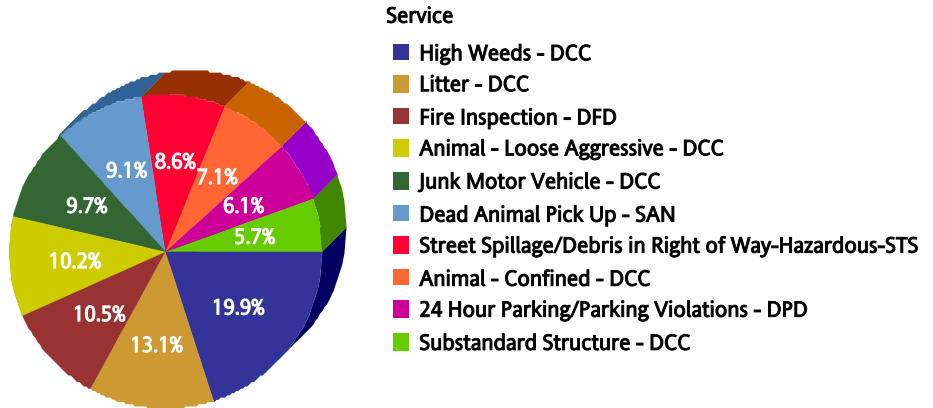


for 06

FY 2005/2006

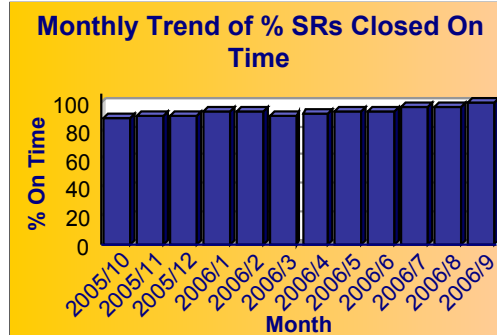
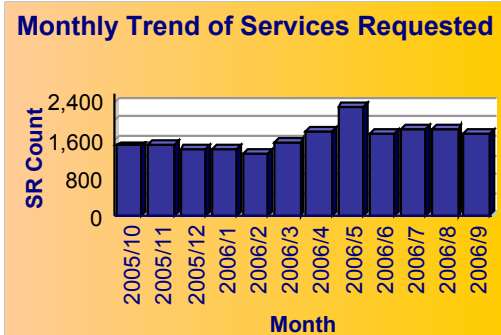
Top 10 Services

SR Type	Service Request Count
High Weeds - DCC	1,972
Litter - DCC	1,303
Fire Inspection - DFD	1,039
Animal - Loose Aggressive - DCC	1,013
Junk Motor Vehicle - DCC	965
Dead Animal Pick Up - SAN	900
Street Spillage/Debris in Right of Way-Hazardous-ST5	857
Animal - Confined - DCC	708
24 Hour Parking/Parking Violations - DPD	607
Substandard Structure - DCC	564



Summary - All Services Requested

SR Count	Total Closed	Total Closed On Time	% Closed on Time	Total Open	Total Open On Time	% Open on Time	Total On Time %
19,837	18,791	17,487	93.1%	1,046	1,005	96.1%	93.2%





City of Dallas Service Level Performance Report by Council District

for 06

FY 2005/2006

Performance on the Top 20 by SR Volume Created During the Reporting Period

Row Number	Top Services Requested	SRs Created	Open SRs	Open, On Time	% Open, On Time	SLA Goal	Avg Days to Close	Total Closed	% of SRs Closed	Total Closed On Time	% Closed On Time	All SRs On Time	% of All SRs On Time
1	High Weeds - DCC	1,972	79	78	98.7%	38	12.8	1,893	96.0%	1,810	95.6%	1,888	95.7%
2	Litter - DCC	1,303	54	53	98.1%	38	16.7	1,249	95.9%	1,154	92.4%	1,207	92.6%
3	Fire Inspection - DFD	1,039	63	50	79.4%	60	35.8	976	93.9%	803	82.3%	853	82.1%
4	Animal - Loose Aggressive - DCC	1,013	0	0	N/A	3	0.3	1,013	100.0%	1,005	99.2%	1,005	99.2%
5	Junk Motor Vehicle - DCC	965	68	68	100.0%	126	30.6	897	93.0%	880	98.1%	948	98.2%
6	Dead Animal Pick Up - SAN	900	1	0	0.0%	1	0.3	899	99.9%	892	99.2%	892	99.1%
7	Street Spillage/Debris in Right of Way-Hazardous-STS	857	0	0	N/A	1	0.1	857	100.0%	850	99.2%	850	99.2%
8	Animal - Confined - DCC	708	0	0	N/A	3	0.4	708	100.0%	701	99.0%	701	99.0%
9	24 Hour Parking/Parking Violations - DPD	607	10	8	80.0%	10	6.0	597	98.4%	542	90.8%	550	90.6%
10	Substandard Structure - DCC	564	290	285	98.3%	365	73.5	274	48.6%	274	100.0%	559	99.1%
11	Illegal Outside Storage - DCC	507	28	25	89.3%	38	22.1	479	94.5%	408	85.2%	433	85.4%
12	Illegal Land Use (Residential/Business) - DCC	468	23	23	100.0%	60	21.5	445	95.1%	403	90.6%	426	91.0%
13	Animal - Sick/Injured - DCC	455	0	0	N/A	3	0.2	455	100.0%	452	99.3%	452	99.3%
14	Animal - Loose - DCC	444	34	34	100.0%	40	18.5	410	92.3%	370	90.2%	404	91.0%
15	Roll Cart - SAN	388	12	12	100.0%	10	5.0	376	96.9%	341	90.7%	353	91.0%
16	Dumpster Violation - DCC	386	43	42	97.7%	60	43.6	343	88.9%	253	73.8%	295	76.4%
17	Motor Vehicle Repair Violation - DCC	352	13	13	100.0%	40	12.7	339	96.3%	320	94.4%	333	94.6%
18	Obstruction Alley/Sidewalk/Street - DCC	327	17	17	100.0%	60	21.0	310	94.8%	301	97.1%	318	97.2%
19	Parking - Unapproved Surface - Eve/Weekends - DCC	299	0	0	N/A	10	0.8	299	100.0%	296	99.0%	296	99.0%
20	Garbage - Missed - SAN	291	6	3	50.0%	6	2.3	285	97.9%	271	95.1%	274	94.2%

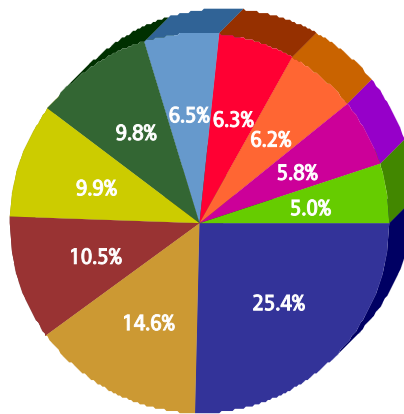


for 07

FY 2005/2006

Top 10 Services

SR Type	Service Request Count
High Weeds - DCC	4,403
Litter - DCC	2,534
Dead Animal Pick Up - SAN	1,827
Animal - Loose Aggressive - DCC	1,721
Substandard Structure - DCC	1,703
Junk Motor Vehicle - DCC	1,127
Animal - Confined - DCC	1,097
Roll Cart - SAN	1,075
Bulky Trash Violations - DCC	1,005
Fire Inspection - DFD	865



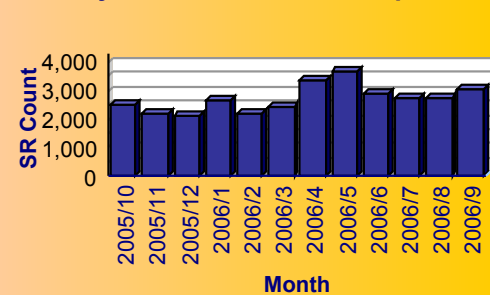
Service

- High Weeds - DCC
- Litter - DCC
- Dead Animal Pick Up - SAN
- Animal - Loose Aggressive - DCC
- Substandard Structure - DCC
- Junk Motor Vehicle - DCC
- Animal - Confined - DCC
- Roll Cart - SAN
- Bulky Trash Violations - DCC
- Fire Inspection - DFD

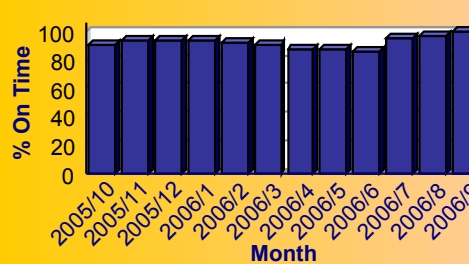
Summary - All Services Requested

SR Count	Total Closed	Total Closed On Time	% Closed on Time	Total Open	Total Open On Time	% Open on Time	Total On Time %
32,513	30,019	27,364	91.2%	2,494	2,446	98.1%	91.7%

Monthly Trend of Services Requested



Monthly Trend of % SRs Closed On Time





City of Dallas Service Level Performance Report by Council District

for 07

FY 2005/2006

Performance on the Top 20 by SR Volume Created During the Reporting Period

Row Number	Top Services Requested	SRs Created	Open SRs	Open, On Time	% Open, On Time	SLA Goal	Avg Days to Close	Total Closed	% of SRs Closed	Total Closed On Time	% Closed On Time	All SRs On Time	% of All SRs On Time
1	High Weeds - DCC	4,403	311	310	99.7%	38	20.7	4,092	92.9%	3,377	82.5%	3,687	83.7%
2	Litter - DCC	2,534	103	101	98.1%	38	22.0	2,431	95.9%	2,060	84.7%	2,161	85.3%
3	Dead Animal Pick Up - SAN	1,827	0	0	N/A	1	0.3	1,827	100.0%	1,816	99.4%	1,816	99.4%
4	Animal - Loose Aggressive - DCC	1,721	0	0	N/A	3	0.3	1,721	100.0%	1,706	99.1%	1,706	99.1%
5	Substandard Structure - DCC	1,703	954	954	100.0%	365	83.8	749	44.0%	749	100.0%	1,703	100.0%
6	Junk Motor Vehicle - DCC	1,127	92	92	100.0%	126	48.3	1,035	91.8%	945	91.3%	1,037	92.0%
7	Animal - Confined - DCC	1,097	1	0	0.0%	3	0.2	1,096	99.9%	1,087	99.2%	1,087	99.1%
8	Roll Cart - SAN	1,075	17	16	94.1%	10	6.9	1,058	98.4%	831	78.5%	847	78.8%
9	Bulky Trash Violations - DCC	1,005	5	4	80.0%	14	7.7	1,000	99.5%	891	89.1%	895	89.1%
10	Fire Inspection - DFD	865	48	36	75.0%	60	17.0	817	94.5%	750	91.8%	786	90.9%
11	24 Hour Parking/Parking Violations - DPD	857	3	3	100.0%	10	2.7	854	99.6%	847	99.2%	850	99.2%
12	Animal - Sick/Injured - DCC	789	0	0	N/A	3	0.2	789	100.0%	785	99.5%	785	99.5%
13	Open and Vacant Structure - DCC	736	7	7	100.0%	30	8.4	729	99.0%	668	91.6%	675	91.7%
14	Animal - Loose - DCC	726	59	59	100.0%	40	18.1	667	91.9%	606	90.9%	665	91.6%
15	Garbage - Missed - SAN	695	6	6	100.0%	6	2.9	689	99.1%	631	91.6%	637	91.7%
16	Obstruction Alley/Sidewalk/Street - DCC	619	65	63	96.9%	60	27.8	554	89.5%	495	89.4%	558	90.1%
17	Street Spillage/Debris in Right of Way-Hazardous-STS	545	0	0	N/A	1	0.0	545	100.0%	540	99.1%	540	99.1%
18	Illegal Outside Storage - DCC	538	38	34	89.5%	38	26.5	500	92.9%	381	76.2%	415	77.1%
19	Recycling ROLL CART Registration - SAN	526	526	526	100.0%	365		0	0.0%	0	N/A	526	100.0%
20	Parking - Unapproved Surface - Eve/Weekends - DCC	459	2	1	50.0%	10	1.6	457	99.6%	441	96.5%	442	96.3%

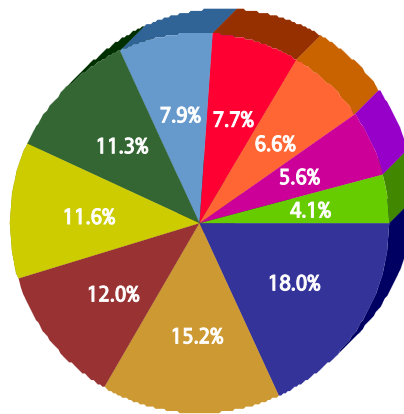


for 08

FY 2005/2006

Top 10 Services

SR Type	Service Request Count
High Weeds - DCC	2,885
Animal - Loose Aggressive - DCC	2,431
Dead Animal Pick Up - SAN	1,920
Animal - Confined - DCC	1,858
Roll Cart - SAN	1,806
Litter - DCC	1,259
Junk Motor Vehicle - DCC	1,225
Animal - Loose - DCC	1,060
Animal - Sick/Injured - DCC	904
Substandard Structure - DCC	656



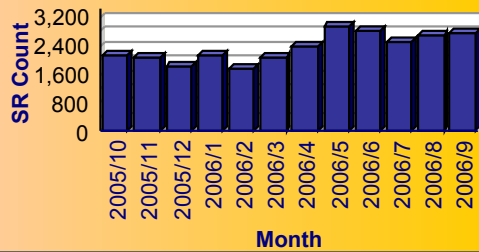
Service

- High Weeds - DCC
- Animal - Loose Aggressive - DCC
- Dead Animal Pick Up - SAN
- Animal - Confined - DCC
- Roll Cart - SAN
- Litter - DCC
- Junk Motor Vehicle - DCC
- Animal - Loose - DCC
- Animal - Sick/Injured - DCC
- Substandard Structure - DCC

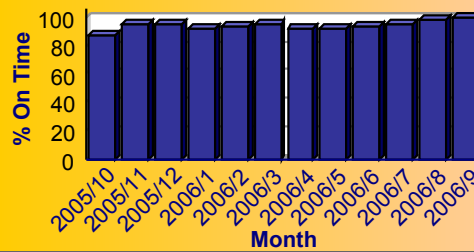
Summary - All Services Requested

SR Count	Total Closed	Total Closed On Time	% Closed on Time	Total Open	Total Open On Time	% Open on Time	Total On Time %
27,981	26,651	24,959	93.7%	1,330	1,294	97.3%	93.8%

Monthly Trend of Services Requested



Monthly Trend of % SRs Closed On Time





City of Dallas Service Level Performance Report by Council District

for 08

FY 2005/2006

Performance on the Top 20 by SR Volume Created During the Reporting Period

Row Number	Top Services Requested	SRs Created	Open SRs	Open, On Time	% Open, On Time	SLA Goal	Avg Days to Close	Total Closed	% of SRs Closed	Total Closed On Time	% Closed On Time	All SRs On Time	% of All SRs On Time
1	High Weeds - DCC	2,885	168	167	99.4%	38	18.1	2,717	94.2%	2,470	90.9%	2,637	91.4%
2	Animal - Loose Aggressive - DCC	2,431	0	0	N/A	3	0.3	2,431	100.0%	2,418	99.5%	2,418	99.5%
3	Dead Animal Pick Up - SAN	1,920	2	0	0.0%	1	0.4	1,918	99.9%	1,892	98.6%	1,892	98.5%
4	Animal - Confined - DCC	1,858	3	0	0.0%	3	0.4	1,855	99.8%	1,842	99.3%	1,842	99.1%
5	Roll Cart - SAN	1,806	47	47	100.0%	10	5.4	1,759	97.4%	1,614	91.8%	1,661	92.0%
6	Litter - DCC	1,259	59	53	89.8%	38	22.9	1,200	95.3%	1,041	86.8%	1,094	86.9%
7	Junk Motor Vehicle - DCC	1,225	139	136	97.8%	126	36.7	1,086	88.7%	1,055	97.1%	1,191	97.2%
8	Animal - Loose - DCC	1,060	68	68	100.0%	40	18.6	992	93.6%	910	91.7%	978	92.3%
9	Animal - Sick/Injured - DCC	904	0	0	N/A	3	0.3	904	100.0%	898	99.3%	898	99.3%
10	Substandard Structure - DCC	656	236	235	99.6%	365	86.9	420	64.0%	420	100.0%	655	99.8%
11	24 Hour Parking/Parking Violations - DPD	649	9	7	77.8%	10	2.8	640	98.6%	639	99.8%	646	99.5%
12	Garbage - Missed - SAN	647	4	4	100.0%	6	3.0	643	99.4%	601	93.5%	605	93.5%
13	Street Spillage/Debris in Right of Way-Hazardous-STS	637	0	0	N/A	1	0.1	637	100.0%	627	98.4%	627	98.4%
14	Obstruction Alley/Sidewalk/Street - DCC	625	40	38	95.0%	60	31.2	585	93.6%	539	92.1%	577	92.3%
15	Bulky Trash Violations - DCC	616	4	3	75.0%	14	5.4	612	99.4%	548	89.5%	551	89.4%
16	Parking - Unapproved Surface - Eve/Weekends - DCC	494	0	0	N/A	10	1.4	494	100.0%	476	96.4%	476	96.4%
17	Animal - Cruelty - DCC	402	0	0	N/A	30	0.9	402	100.0%	398	99.0%	398	99.0%
18	Illegal Outside Storage - DCC	383	29	28	96.6%	38	27.1	354	92.4%	273	77.1%	301	78.6%
19	Fire Inspection - DFD	365	27	24	88.9%	60	37.0	338	92.6%	265	78.4%	289	79.2%
20	Recycling ROLL CART Registration - SAN	294	294	294	100.0%	365		0	0.0%	0	N/A	294	100.0%

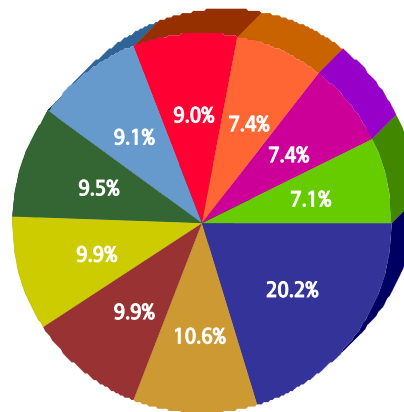


for 09

FY 2005/2006

Top 10 Services

SR Type	Service Request Count
Recycling ROLL CART Registration - SAN	2,478
Bulky Trash Violations - DCC	1,296
Roll Cart - SAN	1,216
Dead Animal Pick Up - SAN	1,208
Obstruction Alley/Sidewalk/Street - DCC	1,159
High Weeds - DCC	1,117
Animal - Confined - DCC	1,102
Animal - Loose Aggressive - DCC	908
Garbage - Missed - SAN	907
Litter - DCC	870



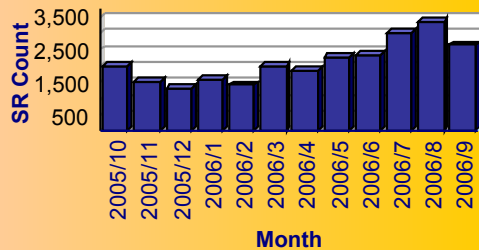
Service

- Recycling ROLL CART Registration - SAN
- Bulky Trash Violations - DCC
- Roll Cart - SAN
- Dead Animal Pick Up - SAN
- Obstruction Alley/Sidewalk/Street - DCC
- High Weeds - DCC
- Animal - Confined - DCC
- Animal - Loose Aggressive - DCC
- Garbage - Missed - SAN
- Litter - DCC

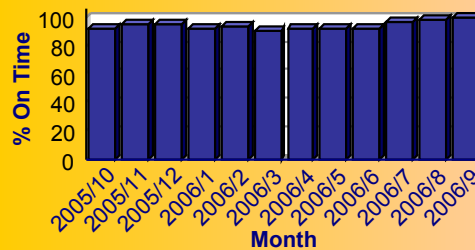
Summary - All Services Requested

SR Count	Total Closed	Total Closed On Time	% Closed on Time	Total Open	Total Open On Time	% Open on Time	Total On Time %
25,215	22,026	20,580	93.4%	3,189	3,152	98.8%	94.1%

Monthly Trend of Services Requested



Monthly Trend of % SRs Closed On Time





City of Dallas Service Level Performance Report by Council District

for 09

FY 2005/2006

Performance on the Top 20 by SR Volume Created During the Reporting Period

Row Number	Top Services Requested	SRs Created	Open SRs	Open, On Time	% Open, On Time	SLA Goal	Avg Days to Close	Total Closed	% of SRs Closed	Total Closed On Time	% Closed On Time	All SRs On Time	% of All SRs On Time
1	Recycling ROLL CART Registration - SAN	2,478	2,478	2,478	100.0%	365		0	0.0%	0	N/A	2,478	100.0%
2	Bulky Trash Violations - DCC	1,296	9	9	100.0%	14	4.2	1,287	99.3%	1,212	94.2%	1,221	94.2%
3	Roll Cart - SAN	1,216	20	20	100.0%	10	8.1	1,196	98.4%	855	71.5%	875	72.0%
4	Dead Animal Pick Up - SAN	1,208	1	0	0.0%	1	0.3	1,207	99.9%	1,195	99.0%	1,195	98.9%
5	Obstruction Alley/Sidewalk/Street - DCC	1,159	97	94	96.9%	60	24.5	1,062	91.6%	1,013	95.4%	1,107	95.5%
6	High Weeds - DCC	1,117	98	97	99.0%	38	15.7	1,019	91.2%	968	95.0%	1,065	95.3%
7	Animal - Confined - DCC	1,102	0	0	N/A	3	0.4	1,102	100.0%	1,094	99.3%	1,094	99.3%
8	Animal - Loose Aggressive - DCC	908	0	0	N/A	3	0.3	908	100.0%	902	99.3%	902	99.3%
9	Garbage - Missed - SAN	907	2	2	100.0%	6	2.5	905	99.8%	858	94.8%	860	94.8%
10	Litter - DCC	870	39	35	89.7%	38	16.5	831	95.5%	776	93.4%	811	93.2%
11	24 Hour Parking/Parking Violations - DPD	724	8	8	100.0%	10	4.1	716	98.9%	706	98.6%	714	98.6%
12	Junk Motor Vehicle - DCC	592	48	47	97.9%	126	31.3	544	91.9%	530	97.4%	577	97.5%
13	Animal - Loose - DCC	560	42	42	100.0%	40	19.6	518	92.5%	466	90.0%	508	90.7%
14	Animal - Sick/Injured - DCC	439	0	0	N/A	3	0.5	439	100.0%	432	98.4%	432	98.4%
15	Illegal Outside Storage - DCC	429	41	41	100.0%	38	18.0	388	90.4%	328	84.5%	369	86.0%
16	Recyclable Collection Missed (Residential) - SAN	334	0	0	N/A	3	1.0	334	100.0%	329	98.5%	329	98.5%
17	Street Repair - Routine-STS	318	12	11	91.7%	90	15.8	306	96.2%	296	96.7%	307	96.5%
18	Parking - Unapproved Surface - Eve/Weekends - DCC	317	0	0	N/A	10	1.2	317	100.0%	311	98.1%	311	98.1%
19	Tree down/low limbs - Emergency-STS	310	0	0	N/A	5	0.2	310	100.0%	308	99.4%	308	99.4%
20	Substandard Structure - DCC	305	98	98	100.0%	365	67.7	207	67.9%	207	100.0%	305	100.0%

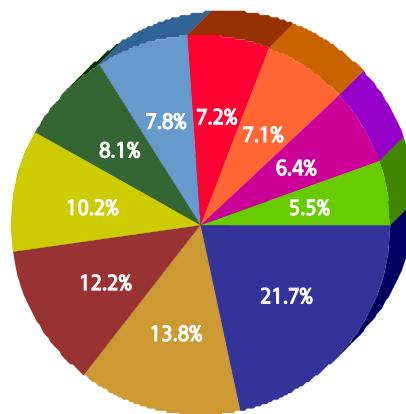


for 10

FY 2005/2006

Top 10 Services

SR Type	Service Request Count
Recycling ROLL CART Registration - SAN	1,604
Obstruction Alley/Sidewalk/Street - DCC	1,020
High Weeds - DCC	901
Animal - Confined - DCC	752
Bulky Trash Violations - DCC	595
Dead Animal Pick Up - SAN	573
Garbage - Missed - SAN	531
Litter - DCC	522
Roll Cart - SAN	475
24 Hour Parking/Parking Violations - DPD	408



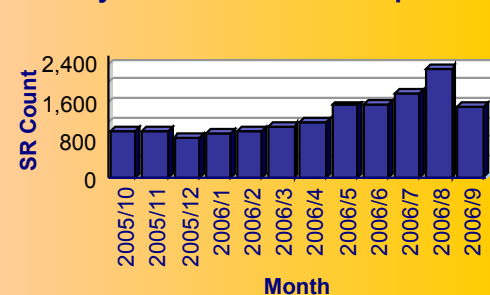
Service

- Recycling ROLL CART Registration - SAN
- Obstruction Alley/Sidewalk/Street - DCC
- High Weeds - DCC
- Animal - Confined - DCC
- Bulky Trash Violations - DCC
- Dead Animal Pick Up - SAN
- Garbage - Missed - SAN
- Litter - DCC
- Roll Cart - SAN
- 24 Hour Parking/Parking Violations - DPD

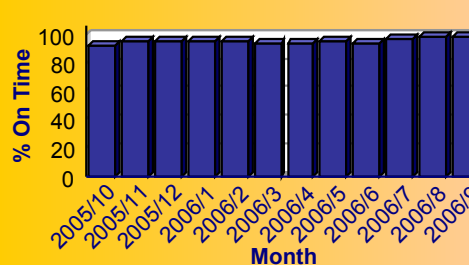
Summary - All Services Requested

SR Count	Total Closed	Total Closed On Time	% Closed on Time	Total Open	Total Open On Time	% Open on Time	Total On Time %
15,739	13,703	12,989	94.8%	2,036	2,014	98.9%	95.3%

Monthly Trend of Services Requested



Monthly Trend of % SRs Closed On Time





City of Dallas Service Level Performance Report by Council District

for 10

FY 2005/2006

Performance on the Top 20 by SR Volume Created During the Reporting Period

Row Number	Top Services Requested	SRs Created	Open SRs	Open, On Time	% Open, On Time	SLA Goal	Avg Days to Close	Total Closed	% of SRs Closed	Total Closed On Time	% Closed On Time	All SRs On Time	% of All SRs On Time
1	Recycling ROLL CART Registration - SAN	1,604	1,602	1,602	100.0%	365	3.5	2	0.1%	2	100.0%	1,604	100.0%
2	Obstruction Alley/Sidewalk/Street - DCC	1,020	57	57	100.0%	60	18.9	963	94.4%	939	97.5%	996	97.6%
3	High Weeds - DCC	901	43	43	100.0%	38	12.6	858	95.2%	839	97.8%	882	97.9%
4	Animal - Confined - DCC	752	1	0	0.0%	3	0.4	751	99.9%	739	98.4%	739	98.3%
5	Bulky Trash Violations - DCC	595	0	0	N/A	14	4.5	595	100.0%	572	96.1%	572	96.1%
6	Dead Animal Pick Up - SAN	573	0	0	N/A	1	0.2	573	100.0%	572	99.8%	572	99.8%
7	Garbage - Missed - SAN	531	4	4	100.0%	6	2.8	527	99.2%	505	95.8%	509	95.9%
8	Litter - DCC	522	19	17	89.5%	38	13.8	503	96.4%	487	96.8%	504	96.6%
9	Roll Cart - SAN	475	10	10	100.0%	10	7.6	465	97.9%	359	77.2%	369	77.7%
10	24 Hour Parking/Parking Violations - DPD	408	3	3	100.0%	10	4.1	405	99.3%	398	98.3%	401	98.3%
11	Substandard Structure - DCC	375	85	85	100.0%	365	59.4	290	77.3%	290	100.0%	375	100.0%
12	Animal - Loose Aggressive - DCC	372	0	0	N/A	3	0.6	372	100.0%	367	98.7%	367	98.7%
13	Substandard Structure Apts - DCC	369	24	24	100.0%	365	15.5	345	93.5%	345	100.0%	369	100.0%
14	Street Spillage/Debris in Right of Way-Hazardous-ST5	352	0	0	N/A	1	0.1	352	100.0%	347	98.6%	347	98.6%
15	Fire Inspection - DFD	306	22	20	90.9%	60	29.3	284	92.8%	241	84.9%	261	85.3%
16	Animal - Sick/Injured - DCC	292	0	0	N/A	3	0.2	292	100.0%	288	98.6%	288	98.6%
17	Junk Motor Vehicle - DCC	261	16	16	100.0%	126	19.8	245	93.9%	245	100.0%	261	100.0%
18	Animal - Loose - DCC	230	21	21	100.0%	40	19.3	209	90.9%	190	90.9%	211	91.7%
19	Illegal Outside Storage - DCC	222	12	11	91.7%	38	14.6	210	94.6%	198	94.3%	209	94.1%
20	Signs - Other - DCC	221	5	3	60.0%	21	14.0	216	97.7%	169	78.2%	172	77.8%

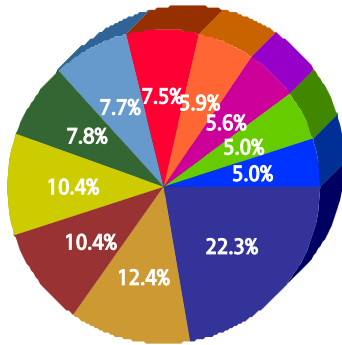


for 11

FY 2005/2006

Top 10 Services

SR Type	Service Request Count
Recycling ROLL CART Registration - SAN	1,149
Animal - Confined - DCC	637
Fire Inspection - DFD	535
Street Spillage/Debris in Right of Way-Hazardous-STs	535
Garbage - Missed - SAN	400
Dead Animal Pick Up - SAN	396
Roll Cart - SAN	388
High Weeds - DCC	303
24 Hour Parking/Parking Violations - DPD	288
Bulky Trash Violations - DCC	256
Obstruction Alley/Sidewalk/Street - DCC	256



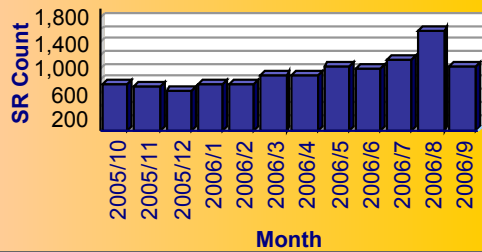
Service

- Recycling ROLL CART Registration - SAN
- Animal - Confined - DCC
- Fire Inspection - DFD
- Street Spillage/Debris in Right of Way-Hazardous-STs
- Garbage - Missed - SAN
- Dead Animal Pick Up - SAN
- Roll Cart - SAN
- High Weeds - DCC
- 24 Hour Parking/Parking Violations - DPD
- Bulky Trash Violations - DCC
- Obstruction Alley/Sidewalk/Street - DCC

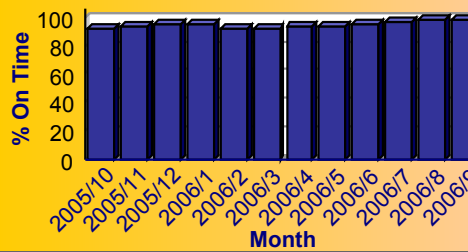
Summary - All Services Requested

SR Count	Total Closed	Total Closed On Time	% Closed on Time	Total Open	Total Open On Time	% Open on Time	Total On Time %
11,116	9,802	9,243	94.3%	1,314	1,305	99.3%	94.9%

Monthly Trend of Services Requested



Monthly Trend of % SRs Closed On Time





for 11

FY 2005/2006

Performance on the Top 20 by SR Volume Created During the Reporting Period

Row Number	Top Services Requested	SRs Created	Open SRs	Open, On Time	% Open, On Time	SLA Goal	Avg Days to Close	Total Closed	% of SRs Closed	Total Closed On Time	% Closed On Time	All SRs On Time	% of All SRs On Time
1	Recycling ROLL CART Registration - SAN	1,149	1,147	1,147	100.0%	365	8.0	2	0.2%	2	100.0%	1,149	100.0%
2	Animal - Confined - DCC	637	0	0	N/A	3	0.1	637	100.0%	634	99.5%	634	99.5%
3	Fire Inspection - DFD	535	24	23	95.8%	60	31.2	511	95.5%	430	84.1%	453	84.7%
4	Street Spillage/Debris in Right of Way-Hazardous-STS	535	0	0	N/A	1	0.1	535	100.0%	531	99.3%	531	99.3%
5	Garbage - Missed - SAN	400	1	1	100.0%	6	2.8	399	99.8%	380	95.2%	381	95.2%
6	Dead Animal Pick Up - SAN	396	1	0	0.0%	1	0.3	395	99.7%	393	99.5%	393	99.2%
7	Roll Cart - SAN	388	8	8	100.0%	10	7.6	380	97.9%	296	77.9%	304	78.4%
8	High Weeds - DCC	303	16	16	100.0%	38	11.2	287	94.7%	282	98.3%	298	98.3%
9	24 Hour Parking/Parking Violations - DPD	288	2	2	100.0%	10	4.5	286	99.3%	267	93.4%	269	93.4%
10	Bulky Trash Violations - DCC	256	2	2	100.0%	14	4.3	254	99.2%	242	95.3%	244	95.3%
11	Obstruction Alley/Sidewalk/Street - DCC	256	6	6	100.0%	60	13.9	250	97.7%	247	98.8%	253	98.8%
12	Animal - Loose Aggressive - DCC	254	0	0	N/A	3	0.4	254	100.0%	252	99.2%	252	99.2%
13	Litter - DCC	220	9	9	100.0%	38	11.2	211	95.9%	210	99.5%	219	99.5%
14	Animal - Sick/Injured - DCC	211	0	0	N/A	3	0.2	211	100.0%	209	99.1%	209	99.1%
15	Substandard Structure Apts - DCC	204	9	9	100.0%	365	18.2	195	95.6%	195	100.0%	204	100.0%
16	Street Repair - Routine-STS	164	1	0	0.0%	90	28.9	163	99.4%	146	89.6%	146	89.0%
17	Recyclable Collection Missed (Residential) - SAN	149	0	0	N/A	3	1.0	149	100.0%	143	96.0%	143	96.0%
18	Water Conservation Violation - DCC	143	0	0	N/A	7	3.1	143	100.0%	132	92.3%	132	92.3%
19	Animal - Loose - DCC	142	2	2	100.0%	40	17.0	140	98.6%	130	92.9%	132	93.0%
20	Substandard Structure - DCC	127	17	17	100.0%	365	43.7	110	86.6%	110	100.0%	127	100.0%

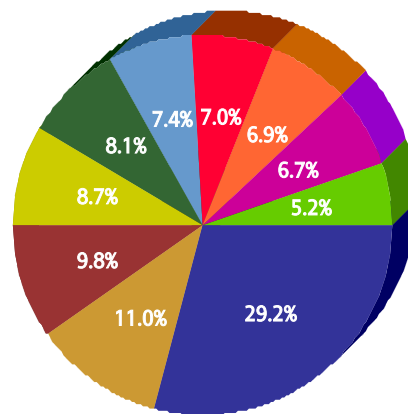


for 12

FY 2005/2006

Top 10 Services

SR Type	Service Request Count
Recycling ROLL CART Registration - SAN	1,550
Animal - Confined - DCC	582
Roll Cart - SAN	521
Garbage - Missed - SAN	463
Fire Inspection - DFD	431
High Weeds - DCC	391
Dead Animal Pick Up - SAN	372
Bulky Trash Violations - DCC	365
24 Hour Parking/Parking Violations - DPD	358
Obstruction Alley/Sidewalk/Street - DCC	275



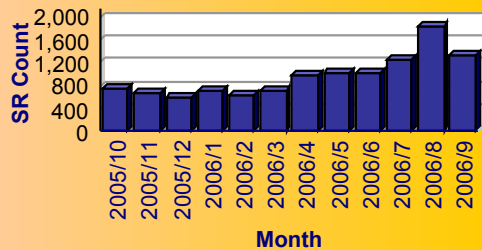
Service

- Recycling ROLL CART Registration - SAN
- Animal - Confined - DCC
- Roll Cart - SAN
- Garbage - Missed - SAN
- Fire Inspection - DFD
- High Weeds - DCC
- Dead Animal Pick Up - SAN
- Bulky Trash Violations - DCC
- 24 Hour Parking/Parking Violations - DPD
- Obstruction Alley/Sidewalk/Street - DCC

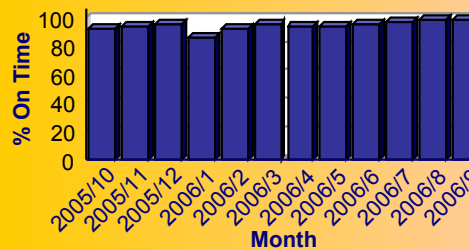
Summary - All Services Requested

SR Count	Total Closed	Total Closed On Time	% Closed on Time	Total Open	Total Open On Time	% Open on Time	Total On Time %
11,463	9,682	9,105	94.0%	1,781	1,760	98.8%	94.8%

Monthly Trend of Services Requested



Monthly Trend of % SRs Closed On Time





City of Dallas Service Level Performance Report by Council District

for 12

FY 2005/2006

Performance on the Top 20 by SR Volume Created During the Reporting Period

Row Number	Top Services Requested	SRs Created	Open SRs	Open, On Time	% Open, On Time	SLA Goal	Avg Days to Close	Total Closed	% of SRs Closed	Total Closed On Time	% Closed On Time	All SRs On Time	% of All SRs On Time
1	Recycling ROLL CART Registration - SAN	1,550	1,550	1,550	100.0%	365		0	0.0%	0	N/A	1,550	100.0%
2	Animal - Confined - DCC	582	1	0	0.0%	3	0.2	581	99.8%	577	99.3%	577	99.1%
3	Roll Cart - SAN	521	13	13	100.0%	10	7.0	508	97.5%	417	82.1%	430	82.5%
4	Garbage - Missed - SAN	463	2	1	50.0%	6	2.7	461	99.6%	443	96.1%	444	95.9%
5	Fire Inspection - DFD	431	16	14	87.5%	60	28.7	415	96.3%	364	87.7%	378	87.7%
6	High Weeds - DCC	391	28	28	100.0%	38	11.6	363	92.8%	356	98.1%	384	98.2%
7	Dead Animal Pick Up - SAN	372	1	0	0.0%	1	0.3	371	99.7%	366	98.7%	366	98.4%
8	Bulky Trash Violations - DCC	365	1	1	100.0%	14	4.7	364	99.7%	347	95.3%	348	95.3%
9	24 Hour Parking/Parking Violations - DPD	358	2	2	100.0%	10	4.7	356	99.4%	332	93.3%	334	93.3%
10	Obstruction Alley/Sidewalk/Street - DCC	275	4	4	100.0%	60	12.8	271	98.5%	269	99.3%	273	99.3%
11	Litter - DCC	269	9	9	100.0%	38	13.2	260	96.7%	254	97.7%	263	97.8%
12	Street Repair - Routine-STS	245	19	17	89.5%	90	33.4	226	92.2%	192	85.0%	209	85.3%
13	Animal - Sick/Injured - DCC	205	0	0	N/A	3	0.4	205	100.0%	204	99.5%	204	99.5%
14	Water Conservation Violation - DCC	191	0	0	N/A	7	2.8	191	100.0%	185	96.9%	185	96.9%
15	Street Lighting - Maintenance - PWT	175	3	0	0.0%	4	0.9	172	98.3%	169	98.3%	169	96.6%
16	Animal - Loose Aggressive - DCC	172	0	0	N/A	3	0.1	172	100.0%	172	100.0%	172	100.0%
17	Substandard Structure - DCC	157	20	20	100.0%	365	38.0	137	87.3%	137	100.0%	157	100.0%
18	Street Spillage/Debris in Right of Way-Hazardous-STS	155	0	0	N/A	1	0.1	155	100.0%	153	98.7%	153	98.7%
19	Cost Plus - SAN	149	0	0	N/A	10	4.0	149	100.0%	147	98.7%	147	98.7%
20	Recyclable Collection Missed (Residential) - SAN	149	0	0	N/A	3	1.3	149	100.0%	143	96.0%	143	96.0%

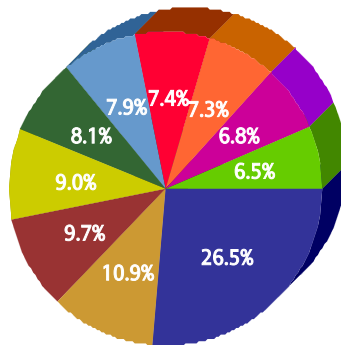


for 13

FY 2005/2006

Top 10 Services

SR Type	Service Request Count
Recycling ROLL CART Registration - SAN	2,443
Roll Cart - SAN	1,002
Garbage - Missed - SAN	896
Obstruction Alley/Sidewalk/Street - DCC	828
Bulky Trash Violations - DCC	747
Animal - Confined - DCC	727
Dead Animal Pick Up - SAN	685
High Weeds - DCC	677
Fire Inspection - DFD	628
Street Spillage/Debris in Right of Way-Hazardous-ST5	599



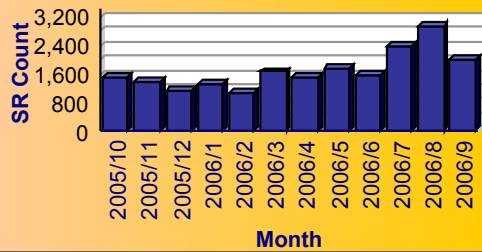
Service

- Recycling ROLL CART Registration - SAN
- Roll Cart - SAN
- Garbage - Missed - SAN
- Obstruction Alley/Sidewalk/Street - DCC
- Bulky Trash Violations - DCC
- Animal - Confined - DCC
- Dead Animal Pick Up - SAN
- High Weeds - DCC
- Fire Inspection - DFD
- Street Spillage/Debris in Right of Way-Hazardous-ST5

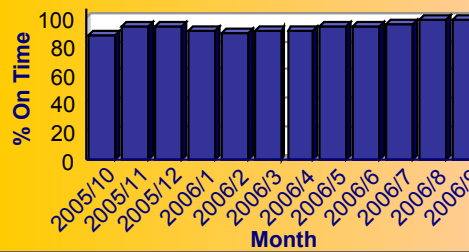
Summary - All Services Requested

SR Count	Total Closed	Total Closed On Time	% Closed on Time	Total Open	Total Open On Time	% Open on Time	Total On Time %
20,286	17,397	16,079	92.4%	2,889	2,847	98.5%	93.3%

Monthly Trend of Services Requested



Monthly Trend of % SRs Closed On Time





City of Dallas Service Level Performance Report by Council District

for 13

FY 2005/2006

Performance on the Top 20 by SR Volume Created During the Reporting Period

Row Number	Top Services Requested	SRs Created	Open SRs	Open, On Time	% Open, On Time	SLA Goal	Avg Days to Close	Total Closed	% of SRs Closed	Total Closed On Time	% Closed On Time	All SRs On Time	% of All SRs On Time
1	Recycling ROLL CART Registration - SAN	2,443	2,442	2,442	100.0%	365	2.0	1	0.0%	1	100.0%	2,443	100.0%
2	Roll Cart - SAN	1,002	16	16	100.0%	10	7.3	986	98.4%	782	79.3%	798	79.6%
3	Garbage - Missed - SAN	896	4	4	100.0%	6	2.3	892	99.6%	851	95.4%	855	95.4%
4	Obstruction Alley/Sidewalk/Street - DCC	828	83	83	100.0%	60	19.9	745	90.0%	689	92.5%	772	93.2%
5	Bulky Trash Violations - DCC	747	0	0	N/A	14	5.3	747	100.0%	676	90.5%	676	90.5%
6	Animal - Confined - DCC	727	0	0	N/A	3	0.1	727	100.0%	723	99.4%	723	99.4%
7	Dead Animal Pick Up - SAN	685	1	0	0.0%	1	0.4	684	99.9%	679	99.3%	679	99.1%
8	High Weeds - DCC	677	39	39	100.0%	38	14.4	638	94.2%	594	93.1%	633	93.5%
9	Fire Inspection - DFD	628	39	28	71.8%	60	35.9	589	93.8%	498	84.6%	526	83.8%
10	Street Spillage/Debris in Right of Way-Hazardous-STS	599	0	0	N/A	1	0.1	599	100.0%	593	99.0%	593	99.0%
11	24 Hour Parking/Parking Violations - DPD	532	6	6	100.0%	10	4.9	526	98.9%	492	93.5%	498	93.6%
12	Litter - DCC	463	12	12	100.0%	38	14.2	451	97.4%	429	95.1%	441	95.2%
13	Street Repair - Routine-STS	402	19	16	84.2%	90	33.8	383	95.3%	326	85.1%	342	85.1%
14	Animal - Loose Aggressive - DCC	379	0	0	N/A	3	0.5	379	100.0%	377	99.5%	377	99.5%
15	Recyclable Collection Missed (Residential) - SAN	355	0	0	N/A	3	0.9	355	100.0%	347	97.7%	347	97.7%
16	Water Conservation Violation - DCC	329	3	0	0.0%	7	3.7	326	99.1%	298	91.4%	298	90.6%
17	Animal - Sick/Injured - DCC	305	0	0	N/A	3	0.1	305	100.0%	304	99.7%	304	99.7%
18	Substandard Structure - DCC	259	56	56	100.0%	365	47.6	203	78.4%	203	100.0%	259	100.0%
19	Brush/Bulk Items - Missed - SAN	248	3	2	66.7%	10	7.5	245	98.8%	181	73.9%	183	73.8%
20	Pothole - Hazardous-STS	240	0	0	N/A	1	0.1	240	100.0%	235	97.9%	235	97.9%

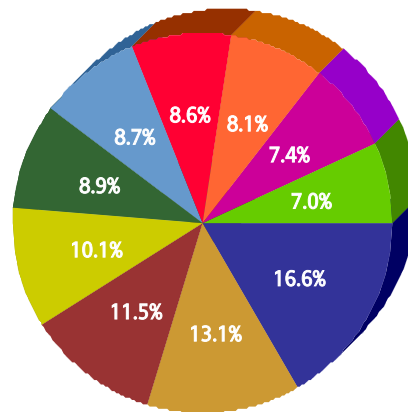


for 14

FY 2005/2006

Top 10 Services

SR Type	Service Request Count
Recycling ROLL CART Registration - SAN	1,678
Roll Cart - SAN	1,325
High Weeds - DCC	1,167
Litter - DCC	1,026
Fire Inspection - DFD	898
Garbage - Missed - SAN	884
Dead Animal Pick Up - SAN	870
Obstruction Alley/Sidewalk/Street - DCC	825
Animal - Confined - DCC	748
24 Hour Parking/Parking Violations - DPD	705



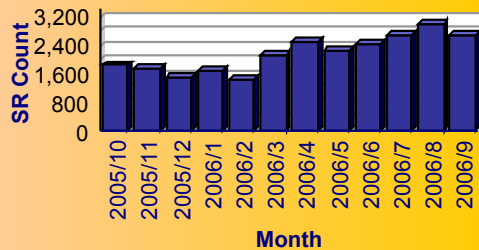
Service

- Recycling ROLL CART Registration - SAN
- Roll Cart - SAN
- High Weeds - DCC
- Litter - DCC
- Fire Inspection - DFD
- Garbage - Missed - SAN
- Dead Animal Pick Up - SAN
- Obstruction Alley/Sidewalk/Street - DCC
- Animal - Confined - DCC
- 24 Hour Parking/Parking Violations - DPD

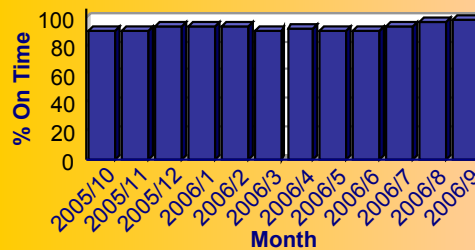
Summary - All Services Requested

SR Count	Total Closed	Total Closed On Time	% Closed on Time	Total Open	Total Open On Time	% Open on Time	Total On Time %
25,982	23,452	21,636	92.3%	2,530	2,482	98.1%	92.8%

Monthly Trend of Services Requested



Monthly Trend of % SRs Closed On Time





City of Dallas Service Level Performance Report by Council District

for 14

FY 2005/2006

Performance on the Top 20 by SR Volume Created During the Reporting Period

Row Number	Top Services Requested	SRs Created	Open SRs	Open, On Time	% Open, On Time	SLA Goal	Avg Days to Close	Total Closed	% of SRs Closed	Total Closed On Time	% Closed On Time	All SRs On Time	% of All SRs On Time
1	Recycling ROLL CART Registration - SAN	1,678	1,677	1,677	100.0%	365	15.0	1	0.1%	1	100.0%	1,678	100.0%
2	Roll Cart - SAN	1,325	23	23	100.0%	10	7.3	1,302	98.3%	967	74.3%	990	74.7%
3	High Weeds - DCC	1,167	145	145	100.0%	38	16.9	1,022	87.6%	947	92.7%	1,092	93.6%
4	Litter - DCC	1,026	40	40	100.0%	38	17.0	986	96.1%	916	92.9%	956	93.2%
5	Fire Inspection - DFD	898	43	35	81.4%	60	28.1	855	95.2%	755	88.3%	790	88.0%
6	Garbage - Missed - SAN	884	3	2	66.7%	6	2.6	881	99.7%	838	95.1%	840	95.0%
7	Dead Animal Pick Up - SAN	870	0	0	N/A	1	0.3	870	100.0%	865	99.4%	865	99.4%
8	Obstruction Alley/Sidewalk/Street - DCC	825	79	79	100.0%	60	22.5	746	90.4%	716	96.0%	795	96.4%
9	Animal - Confined - DCC	748	1	0	0.0%	3	0.2	747	99.9%	744	99.6%	744	99.5%
10	24 Hour Parking/Parking Violations - DPD	705	9	9	100.0%	10	4.7	696	98.7%	641	92.1%	650	92.2%
11	Street Spillage/Debris in Right of Way-Hazardous-STS	640	0	0	N/A	1	0.1	640	100.0%	633	98.9%	633	98.9%
12	Bulky Trash Violations - DCC	607	6	5	83.3%	14	4.3	601	99.0%	562	93.5%	567	93.4%
13	Animal - Loose Aggressive - DCC	494	0	0	N/A	3	0.4	494	100.0%	489	99.0%	489	99.0%
14	Substandard Structure - DCC	463	125	125	100.0%	365	73.7	338	73.0%	338	100.0%	463	100.0%
15	Signs - Other - DCC	402	3	3	100.0%	21	7.6	399	99.3%	357	89.5%	360	89.6%
16	Street Repair - Routine-STS	392	19	19	100.0%	90	23.4	373	95.2%	348	93.3%	367	93.6%
17	Animal - Sick/Injured - DCC	382	0	0	N/A	3	0.4	382	100.0%	378	99.0%	378	99.0%
18	Tree down/low limbs - Emergency-STS	365	0	0	N/A	5	0.3	365	100.0%	362	99.2%	362	99.2%
19	Recyclable Collection Missed (Residential) - SAN	353	0	0	N/A	3	1.3	353	100.0%	340	96.3%	340	96.3%
20	Graffiti Private Property - Residential/Commercial	351	51	51	100.0%	90	26.9	300	85.5%	289	96.3%	340	96.9%

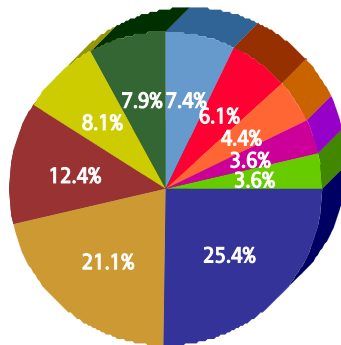


for U

FY 2005/2006

Top 10 Services

SR Type	Service Request Count
Recycling ROLL CART Registration - SAN	542
High Weeds - DCC	450
Street Spillage/Debris in Right of Way-Hazardous-STs	264
Fire Inspection - DFD	173
Dead Animal Pick Up - SAN	168
Litter - DCC	158
Roll Cart - SAN	130
24 Hour Parking/Parking Violations - DPD	94
Animal - Loose - DCC	77
Substandard Structure - DCC	77



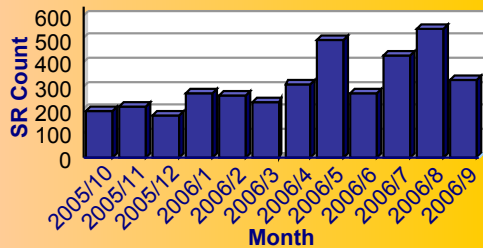
Service

- Recycling ROLL CART Registration - SAN
- High Weeds - DCC
- Street Spillage/Debris in Right of Way-Hazardous-STs
- Fire Inspection - DFD
- Dead Animal Pick Up - SAN
- Litter - DCC
- Roll Cart - SAN
- 24 Hour Parking/Parking Violations - DPD
- Animal - Loose - DCC
- Substandard Structure - DCC

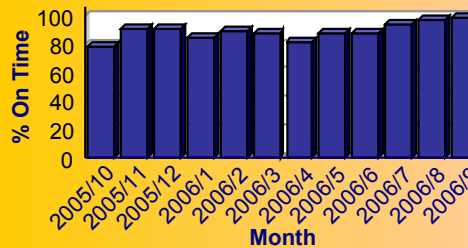
Summary - All Services Requested

SR Count	Total Closed	Total Closed On Time	% Closed on Time	Total Open	Total Open On Time	% Open on Time	Total On Time %
3,716	3,052	2,672	87.5%	664	644	97.0%	89.2%

Monthly Trend of Services Requested



Monthly Trend of % SRs Closed On Time





City of Dallas Service Level Performance Report by Council District

for U

FY 2005/2006

Performance on the Top 20 by SR Volume Created During the Reporting Period

Row Number	Top Services Requested	SRs Created	Open SRs	Open, On Time	% Open, On Time	SLA Goal	Avg Days to Close	Total Closed	% of SRs Closed	Total Closed On Time	% Closed On Time	All SRs On Time	% of All SRs On Time
1	Recycling ROLL CART Registration - SAN	542	541	541	100.0%	365	0.0	1	0.2%	1	100.0%	542	100.0%
2	High Weeds - DCC	450	29	28	96.6%	38	19.1	421	93.6%	375	89.1%	403	89.6%
3	Street Spillage/Debris in Right of Way-Hazardous-STS	264	0	0	N/A	1	0.0	264	100.0%	262	99.2%	262	99.2%
4	Fire Inspection - DFD	173	11	7	63.6%	60	28.6	162	93.6%	140	86.4%	147	85.0%
5	Dead Animal Pick Up - SAN	168	0	0	N/A	1	1.7	168	100.0%	164	97.6%	164	97.6%
6	Litter - DCC	158	11	8	72.7%	38	22.1	147	93.0%	125	85.0%	133	84.2%
7	Roll Cart - SAN	130	1	1	100.0%	10	14.9	129	99.2%	66	51.2%	67	51.5%
8	24 Hour Parking/Parking Violations - DPD	94	0	0	N/A	10	6.3	94	100.0%	79	84.0%	79	84.0%
9	Substandard Structure - DCC	77	23	23	100.0%	365	102.4	54	70.1%	54	100.0%	77	100.0%
10	Animal - Loose - DCC	77	4	4	100.0%	40	16.8	73	94.8%	73	100.0%	77	100.0%
11	Signs - Public Right of Way - DCC	74	0	0	N/A	7	1.1	74	100.0%	71	95.9%	71	95.9%
12	Garbage - Missed - SAN	70	4	0	0.0%	6	20.7	66	94.3%	36	54.5%	36	51.4%
13	Parking - Unapproved Surface - Eve/Weekends - DCC	64	2	1	50.0%	10	1.1	62	96.9%	60	96.8%	61	95.3%
14	Miscellaneous Service Request - SCS	60	1	1	100.0%	10	3.1	59	98.3%	59	100.0%	60	100.0%
15	Animal - Sick/Injured - DCC	55	0	0	N/A	3	0.2	55	100.0%	55	100.0%	55	100.0%
16	Animal - Confined - DCC	54	0	0	N/A	3	1.7	54	100.0%	52	96.3%	52	96.3%
17	Obstruction Alley/Sidewalk/Street - DCC	46	2	2	100.0%	60	24.0	44	95.7%	42	95.5%	44	95.7%
18	Pothole - Hazardous-STS	42	0	0	N/A	1	0.2	42	100.0%	41	97.6%	41	97.6%
19	Crime/Vandalism/MISC. DPD	36	0	0	N/A	14	19.8	36	100.0%	24	66.7%	24	66.7%
20	Street Repair - Routine-STS	33	1	1	100.0%	90	71.6	32	97.0%	16	50.0%	17	51.5%