

DALLAS LOVE FIELD

January 14, 2020

Good Neighbor Program Update
Dallas Love Field Airport

What is the Good Neighbor Program?



A way to connect with the community on future ideas and planning input.



Create liveable, walkable and interconnected neighborhoods in our community.



Be a community that happens to be located around an airport, not just an airport located around a community.

Purpose



Good Neighbor Program (GNP) Update

- Braniff Centre
- Lemmon Avenue
- Entry Road Enhancements
- Runway Construction
- Alternate Entry Analysis
- National Park Service (NPS) Grant
- Bachman Dam and Lake Dredging



Community Engagement

- Future Ideas for GNP Projects



Good Neighbor Program Goals

We are an airport that happens to be in the middle of a community, but.....

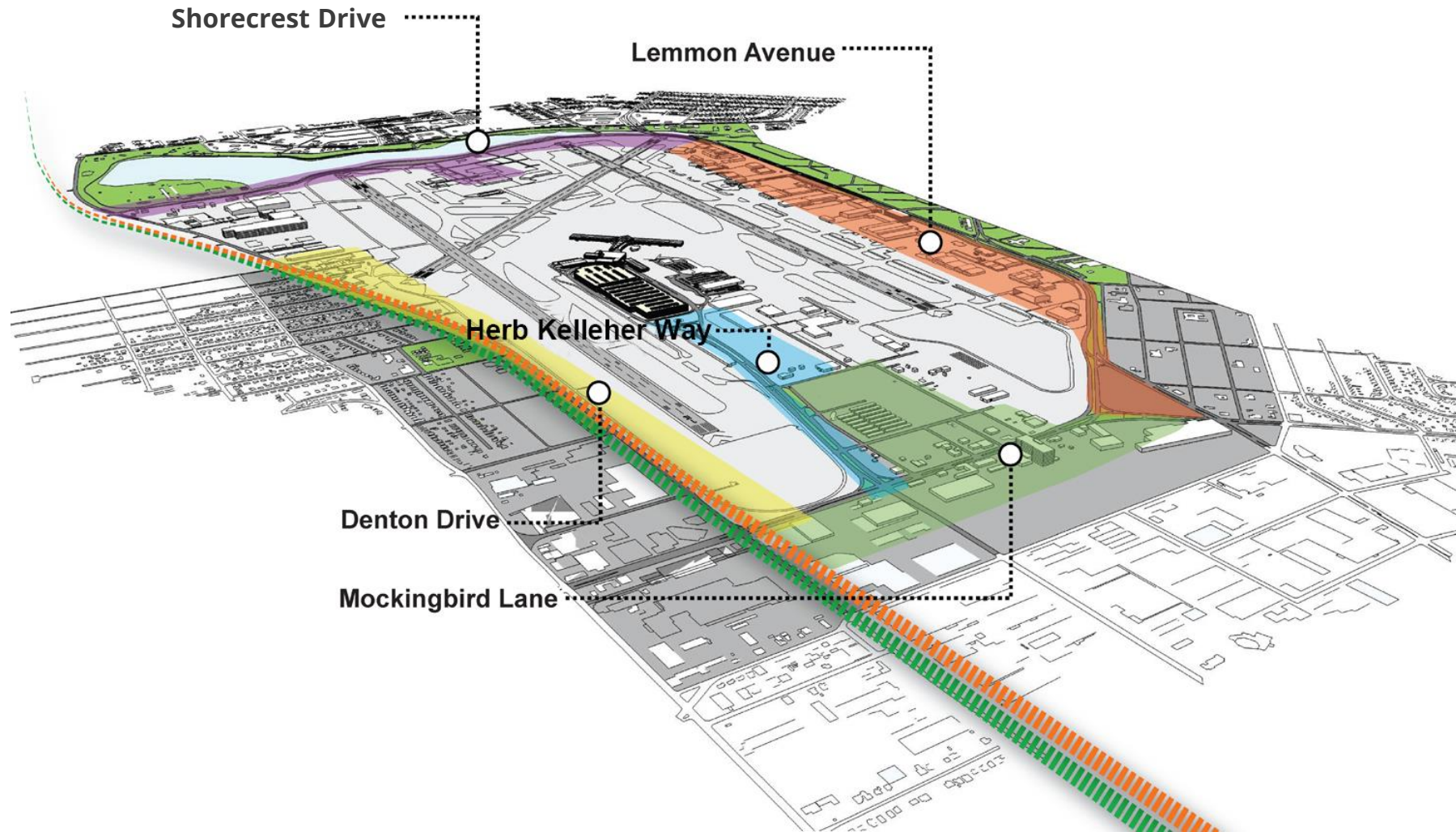
“Our goal is to be a community that happens to be located around an airport...”*



- Off-airport urban design
- Landscaping and beautification
- Parks, trails and recreational activities
- Signage and traffic improvements
- Pedestrian improvements

**Mark Duebner, Director of Aviation*

Target Areas



History of Good Neighbor Program



- Created out of the March 2012 Master Plan



- Enhance physical and economic development



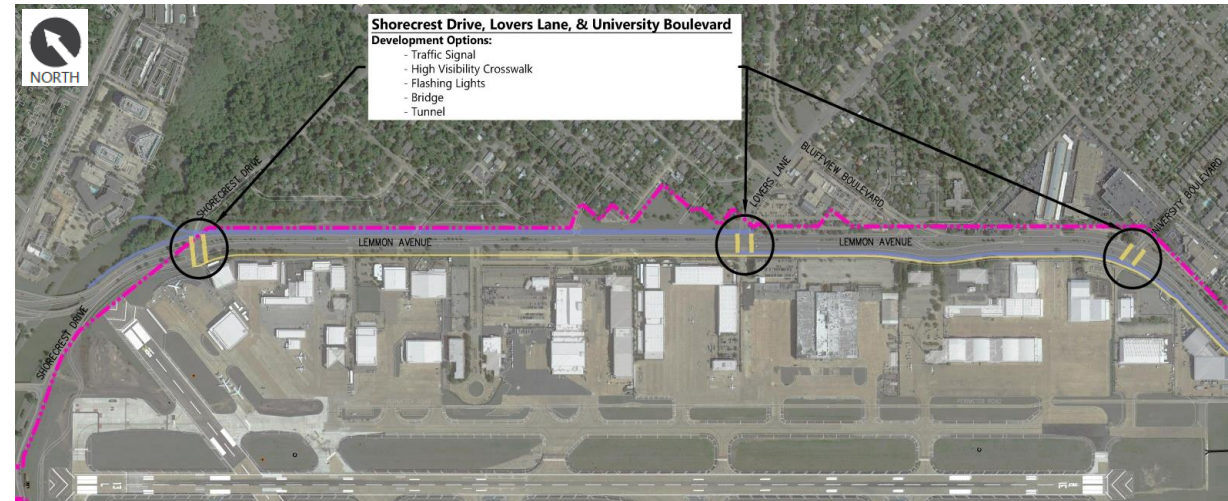
- Public involvement program through community input on:
 - Development
 - Improvements



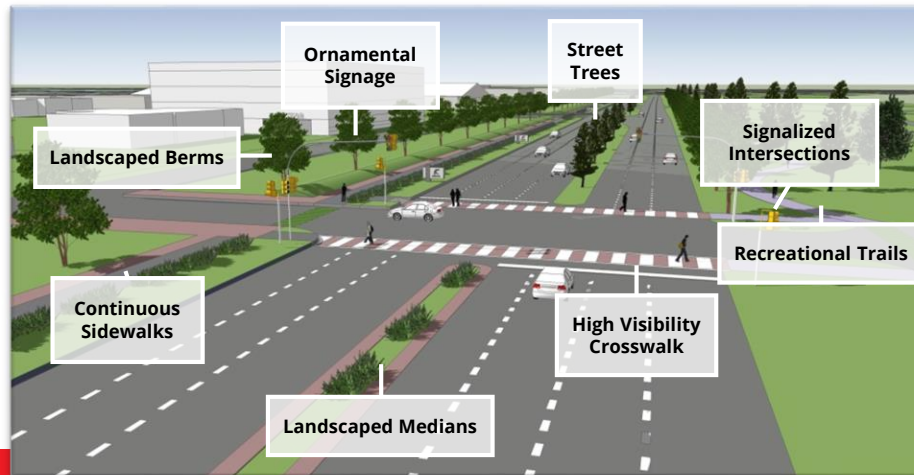
Priorities from Good Neighbor Program Input



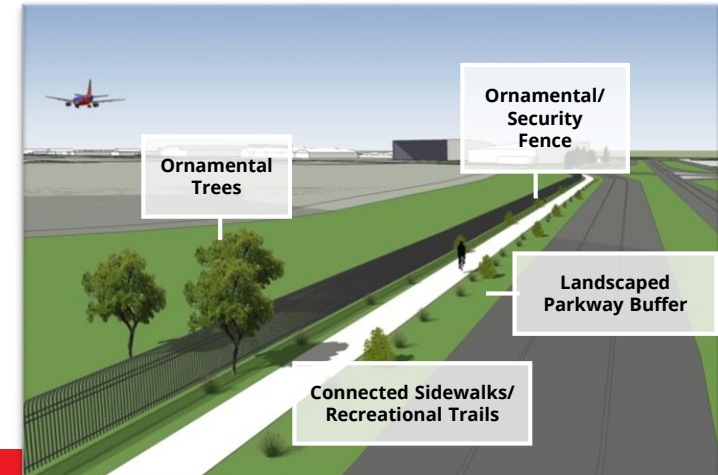
- Top 3 Priorities in 2015
- Landscape / signage
 - Pedestrian connection
 - Buffers



Lemmon Avenue and Lovers Lane



Airdrome Drive



Recent Development – Braniff Centre



Braniff Headquarters - ca. 1958

The Braniff Centre - Before
7701 Lemmon Avenue, Dallas, TX 75209

Recent Development – Braniff Centre



The Braniff Centre - Current

- The project preserves the front of old buildings facing Lemmon Avenue
- Buildings were originally designed by noted international architects

Recent Development – Braniff Centre



The Braniff Centre - Current

- Lincoln auto dealer showroom
- Calloway Nursery
 - plan for a new 33,341 square foot store

Projects - Lemmon Avenue



- Adding pedestrian safety elements



- Improving connectivity

- Creating walkable pathways



- Enhancing streetscape features

Lemmon/Bluffview Intersections



The Department of Aviation is partnering with..... DART, Department of Public Works and Department of Transportation to undertake improvements to the intersection of Lemmon Avenue and Bluffview Boulevard.

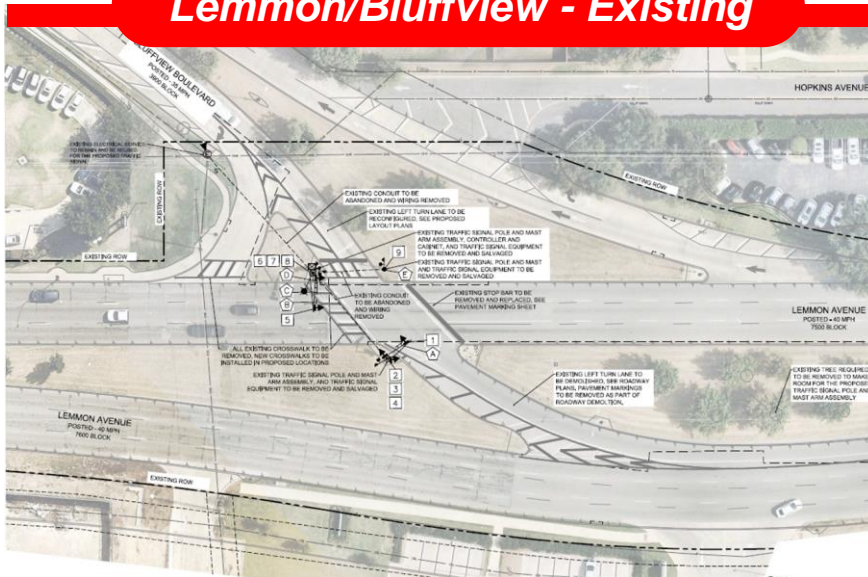
The project will facilitate safer pedestrian crossings across Lemmon Avenue and generally increase pedestrian safety by providing:

- High visibility crosswalks
- Pedestrian pathways
- New traffic signal with pedestrian phasing and
- Intersection safety lighting

In addition, the intersection will be realigned, in an effort to reduce vehicular crashes.

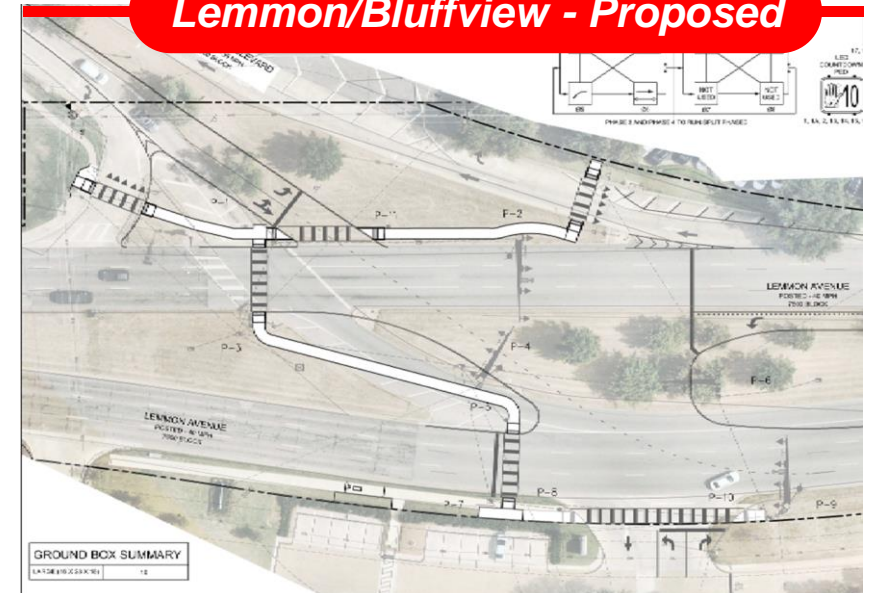
Lemmon/Bluffview Intersection

Lemmon/Bluffview - Existing



- No crosswalks across Lemmon
- Crosswalks end in median
- No pedestrian walkways in median
- Noncompliant Barrier Free Ramps
- Inadequate Intersection lighting

Lemmon/Bluffview - Proposed



- High visibility crosswalks
- Pedestrian pathways
- New traffic signal with pedestrian phasing
- ADA compliant Barrier Free Ramps
- Intersection safety lighting

Projects – Entry Road



Entry Road Enhancements

- Lighting
- Pedestrian Paving
- Fencing
- Landscaping
- Signage
- Public Art

Projects – Entry Road



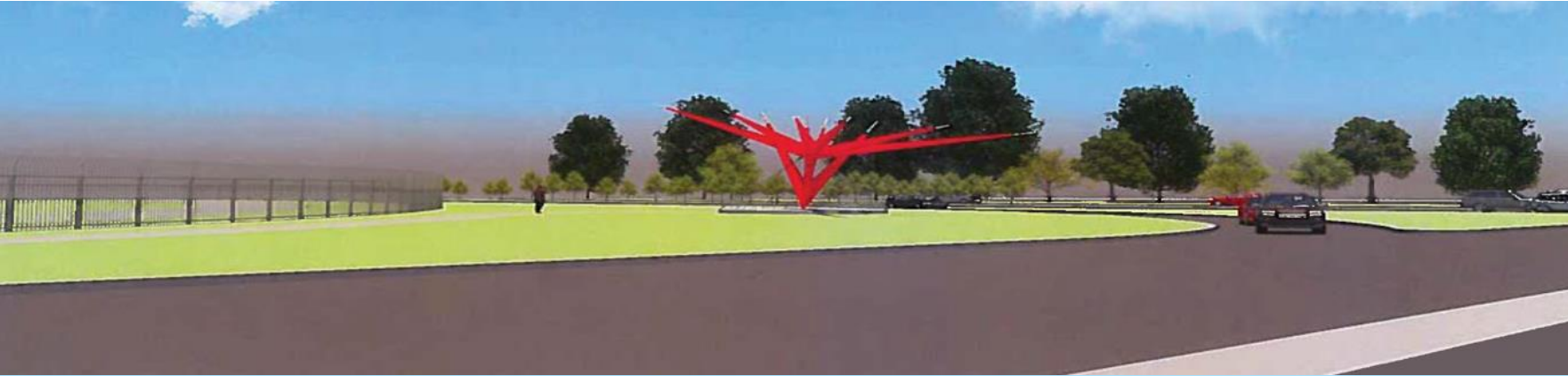
Proposed Art

(images are conceptual designs and the final project may look slightly different)

Artist: Ed Carpenter
Title: Love Bird

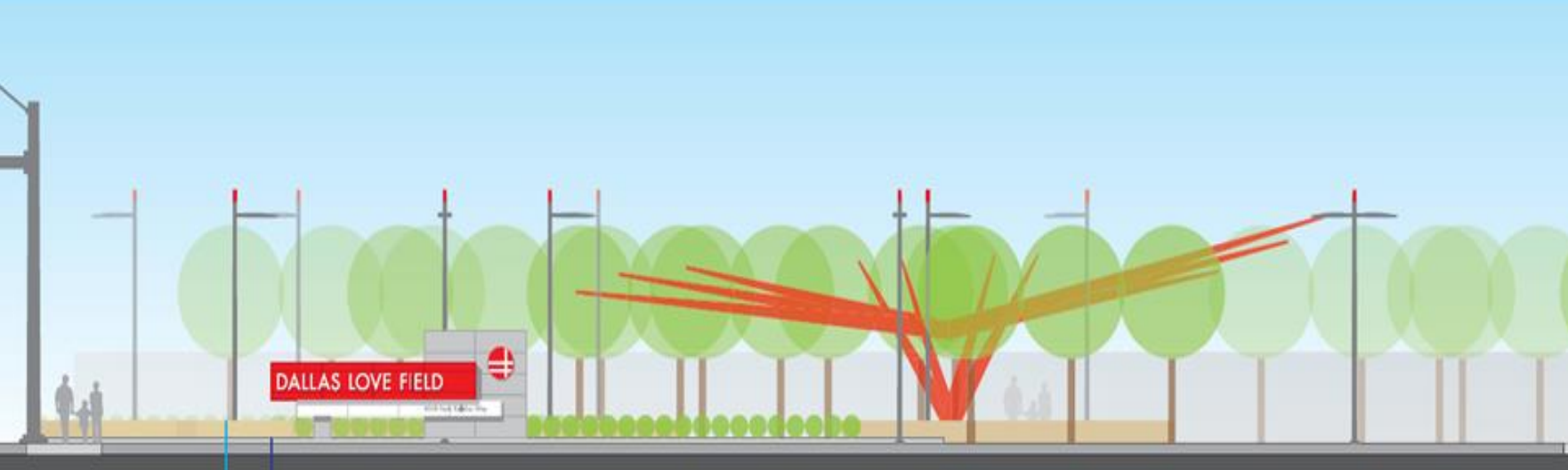
Dimensions: 90' wide x 19'6" wide
Materials: 304 stainless steel, stainless steel cables and hardware, laminated safety glass wing tips and reinforce concrete base

Projects – Entry Road

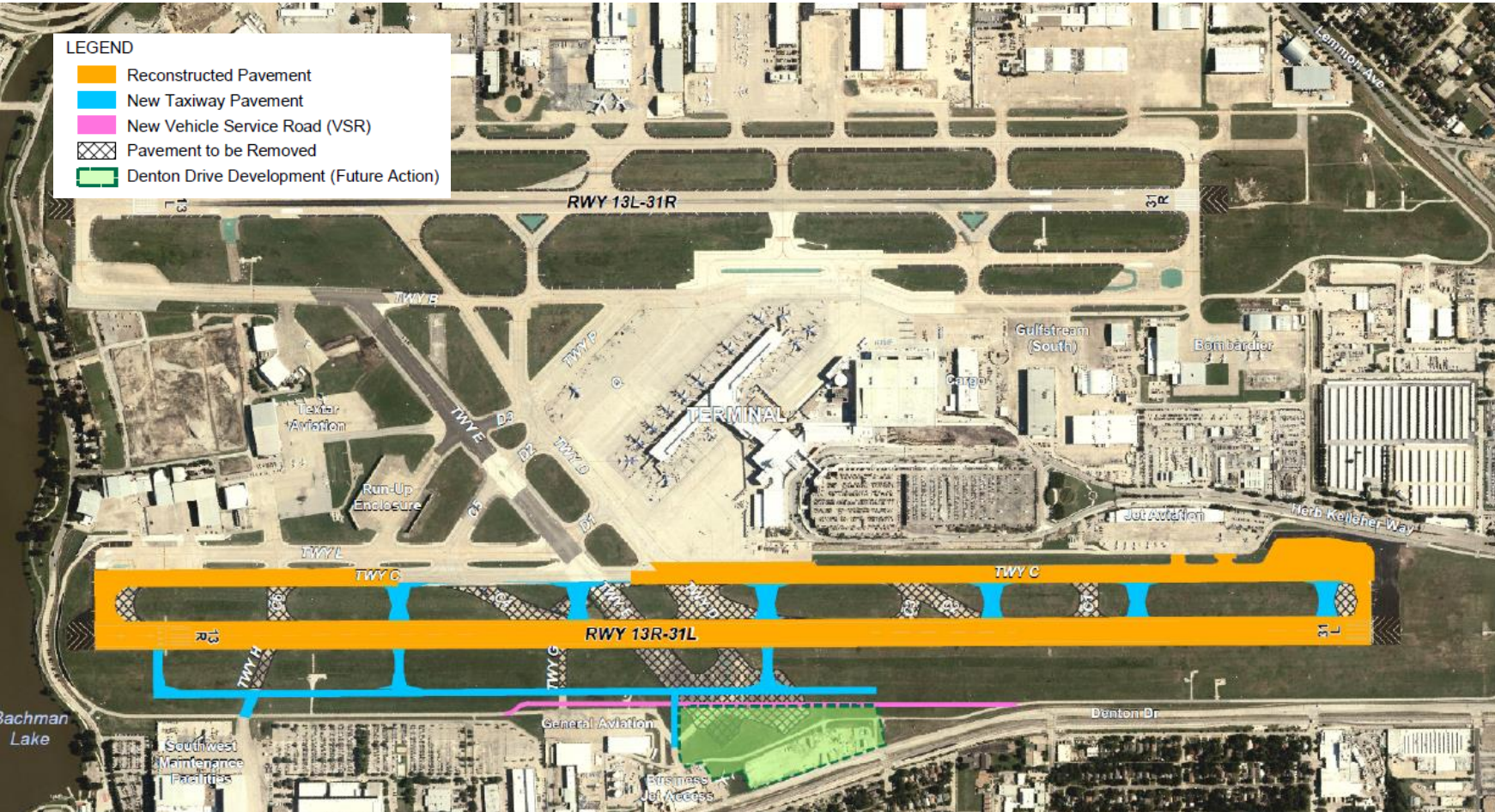


Proposed Art and New Sign

(images are conceptual designs and the final project may look slightly different)



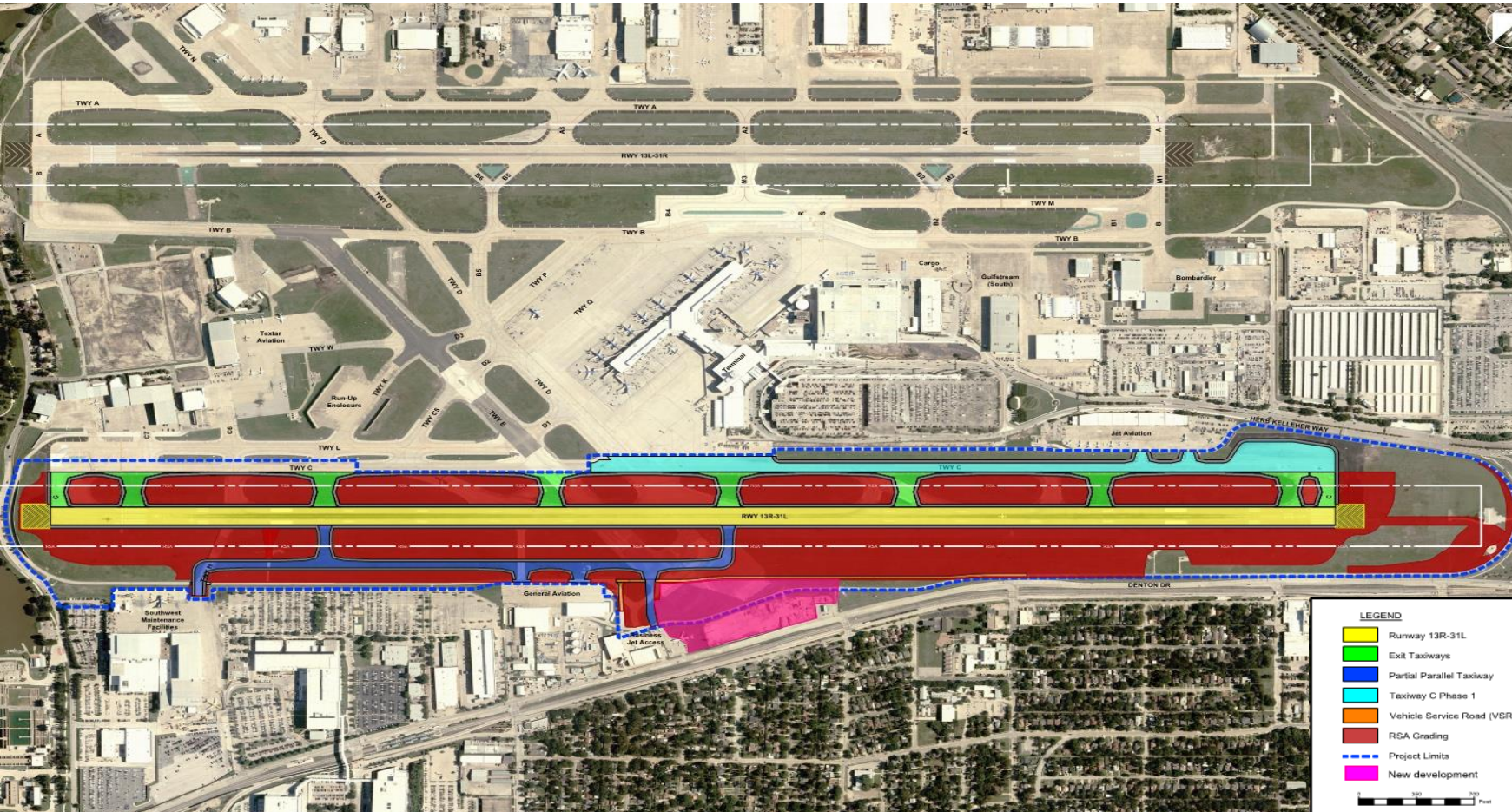
Recent Development – Runway 13R-31L



Runway Construction 13R-31L

- Full removal of all pavement and recycled to create new runway
- New connectors
- New drainage
- All landings and takeoffs will be on Lemmon Avenue runway (13L-31R) during construction

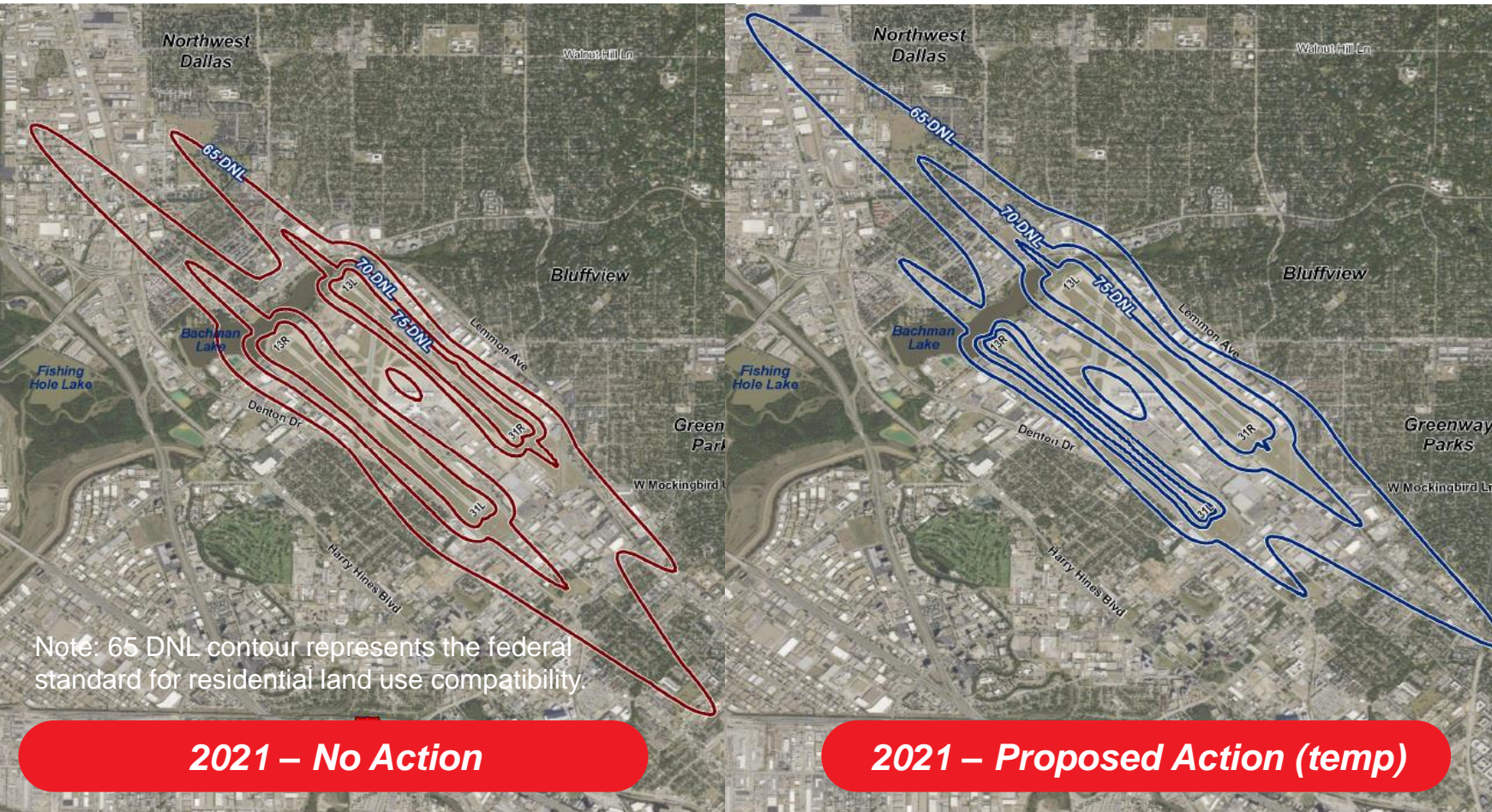
Recent Development – Runway 13R-31L



Runway Construction 13R-31L

- Environmental Assessment (EA) to analyze impacts of construction
- Effects outside Airport fencing
 - Construction entrance off Denton Drive near Gilford Street
 - Stormwater drainage system improvements
 - No impacts to Bachman Lake or Shorecrest Drive
 - Construction emissions
 - Temporary noise impacts

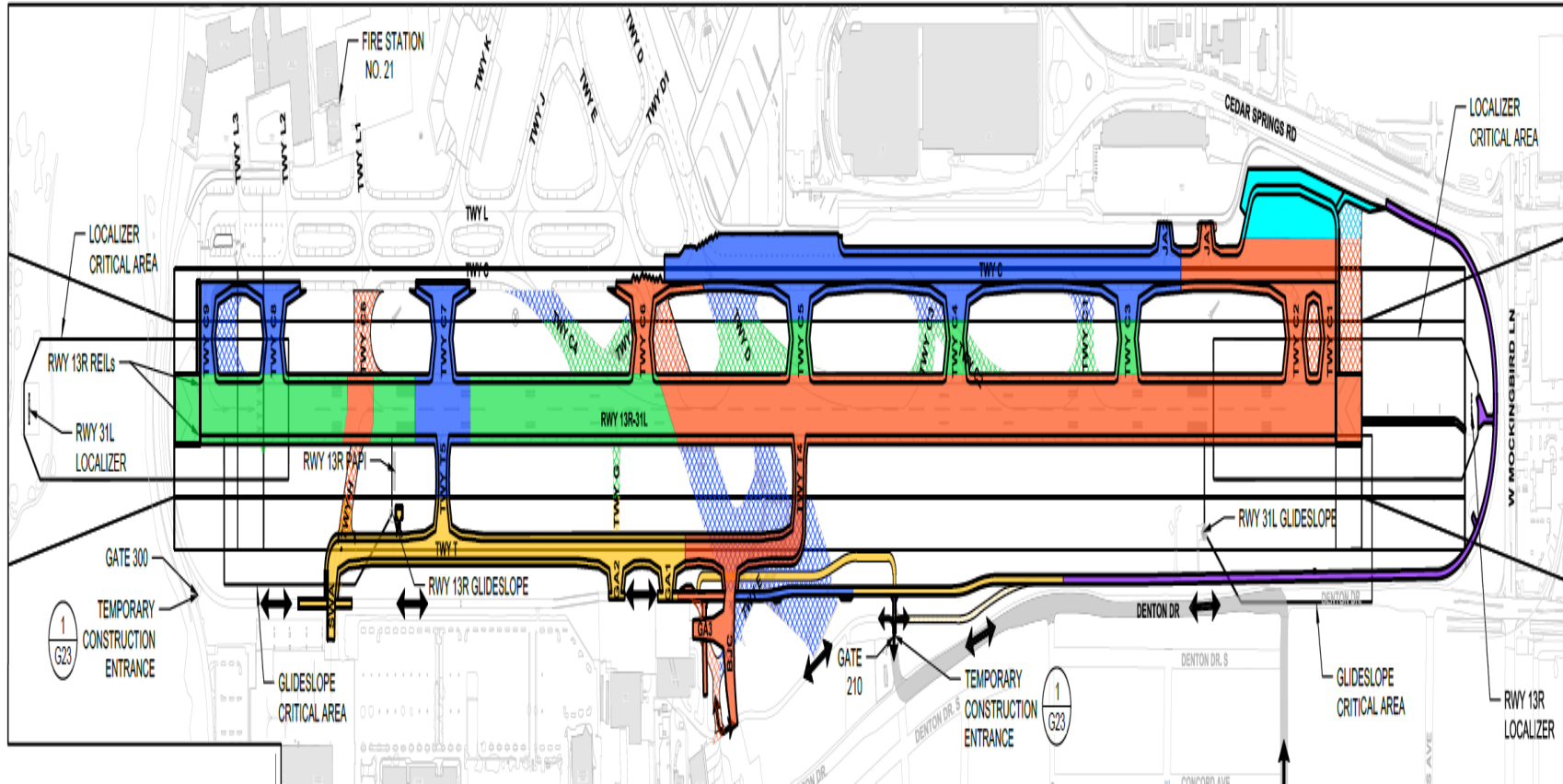
Recent Development – Runway 13R-31L



Runway Construction 13R-31L

- The Federal Aviation Administration (FAA) recently approved the EA
 - Located on the Dallas Love Field website; www.dallas-lovefield.com
- Construction Schedule
 - Late 2020 through early 2022
 - Runway closure for 9 months beginning in early 2021
- Provide updates through website and Good Neighbor Meetings
- Affected residents to receive notice prior to construction

Recent Development – Runway 13R-31L



Runway Construction 13R-31L

- Construction phasing

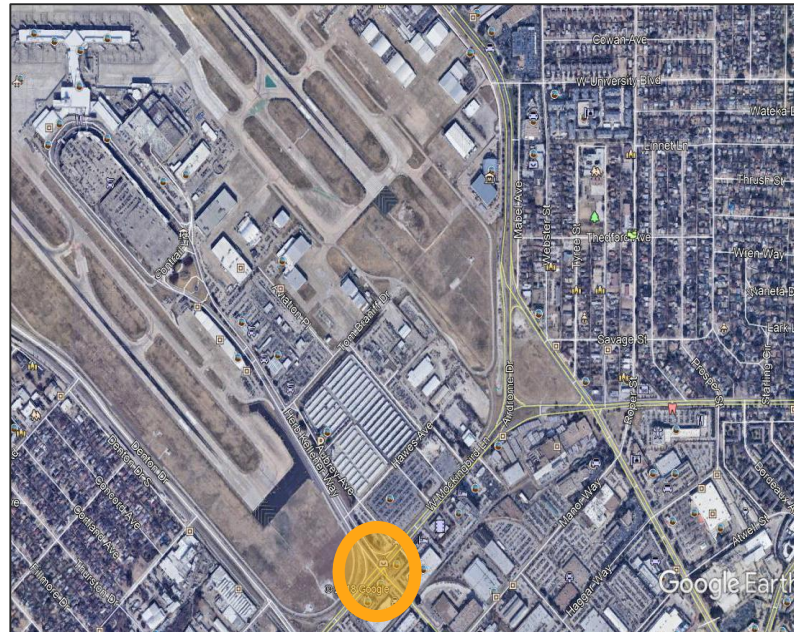
LEGEND

	PHASE 1 CONSTRUCTION & DEMO		PHASE 5 CONSTRUCTION & DEMO
	PHASE 2 CONSTRUCTION & DEMO		CONTRACTOR ACCESS ROUTE
	PHASE 2 & 3 CONSTRUCTION & DEMO		STAGING
	PHASE 3 CONSTRUCTION & DEMO		BATCH PLANT
	PHASE 4 CONSTRUCTION & DEMO		

Recent Development – Alternate Entry

Level of Service	Control Delay (seconds per vehicle)
A	<10.0
B	>10.0 and <20.0
C	>20.0 and <35.0
D	>35.0 and <55.0
E	>55.0 and <80.0
F	>80.0

Level of Service (LOS)



Airport Main Entrance

Airport Entrance Congestion

- Currently, there is only one entrance into the Dallas Love Field (DAL) airport
- In 2012, DAL had 4.1 million enplaned passengers
- The number grew to 4.2 million in 2013
- Predicted growth expected to have doubled by the end of 2019

Recent Development – Alternate Entry



Intersection	LOS at 8.2 MAEP	
	a.m. Peak	p.m. Peak
Lemmon Avenue and Airdrome Drive	C	F
Lemmon Avenue and Mockingbird Lane	F	F
Mockingbird Lane and Airdrome Drive	B	C
Mockingbird Lane and Cedar Springs Road/ Herb Kelleher Way	F	F
Mockingbird Lane and Denton Drive	F	F

Recent Development – Alternate Entry



Due to significant traffic volume changes on area roadways, staff has collected new traffic data:

- A total of 11 alternatives being analyzed
- A shortlist of alternatives to be analyzed in the spring of 2020
- To include alternate transportation modes
- To be presented to committee in late spring/summer of 2020

Recent Development – Alternate Entry

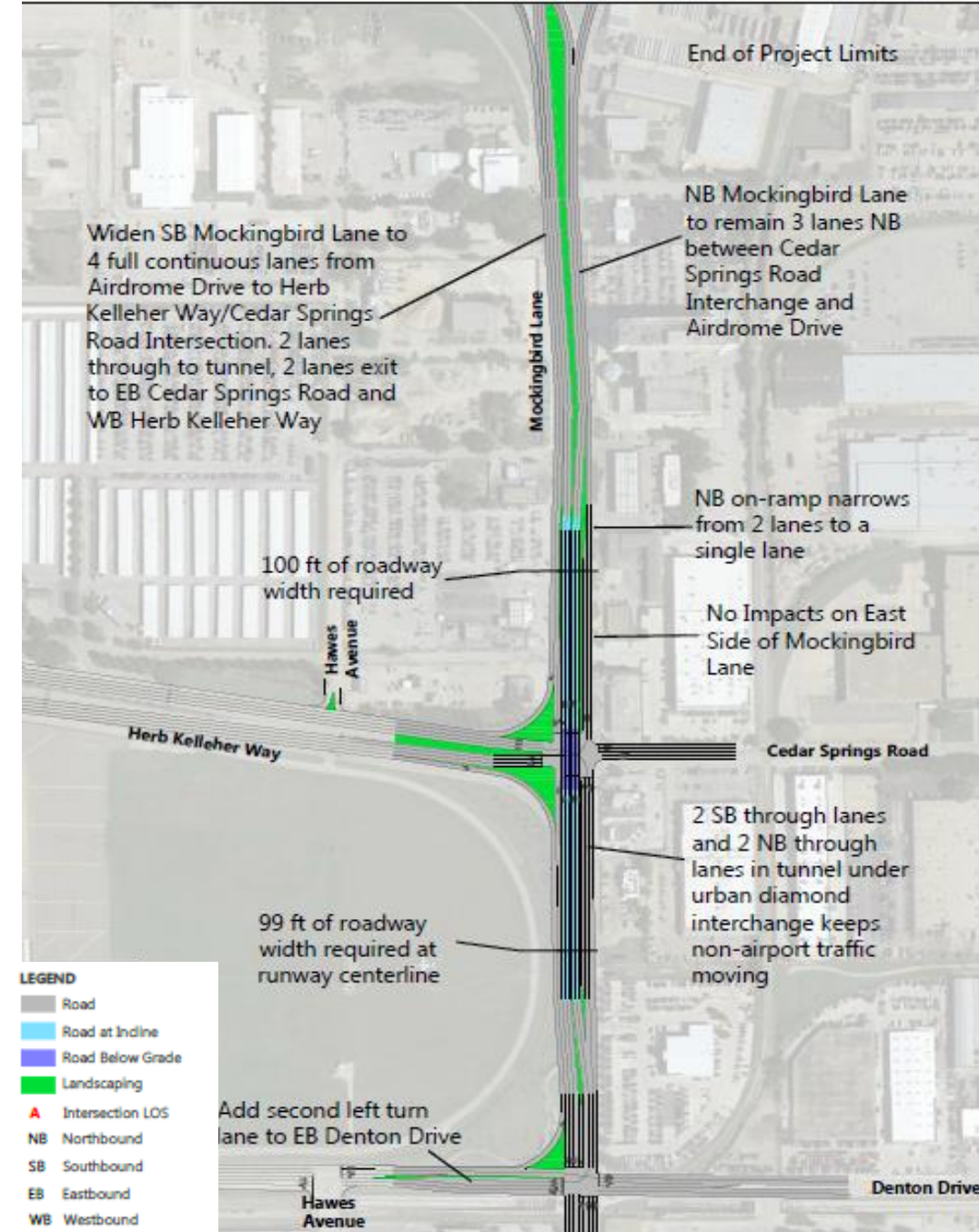


- 1 Conventional Urban Diamond Interchange
- 2 Diverging Diamond Interchange
- 3 Direct ramp Interchange
- 4 U-Turn at Airdrome Drive for traffic coming from west
- 5 Mockingbird Lane/Waddell Avenue
- 6 Shorecrest Drive
- 7 Bridge from Northwest Highway
- 8 Shorecrest Drive west of Runway 13R-31L
- 9 Lemmon Ave/Shorecrest Drive Intersection
- 10 Lemmon Ave/George Coker Circle Intersection
- 11 Denton Drive
- 12 Do Nothing

Recent Development – Alternate Entry

The 2015 Master Plan Update analyzed three alternatives to mitigate congestion at Herb Kelleher Way/Cedar Springs Road and Mockingbird Lane intersection:

1. Compressed Conventional Urban Diamond Interchange
2. Diverging Urban Diamond Interchange
3. Direct Ramp Interchange



National Park Service Assistance



- The National Park Service Rivers, Trails, and Conservation Assistance (RTCA) program supports community-led conservation and outdoor recreation projects across the nation.
- Two staff members from the RTCA Texas Field Office will be assisting the City of Dallas in developing a concept plan for the Love Field Loop Trail.
- The program will offer support with facilitation, public engagement, planning, and design.

Bachman Dam & Lake Dredging Projects

Drivers



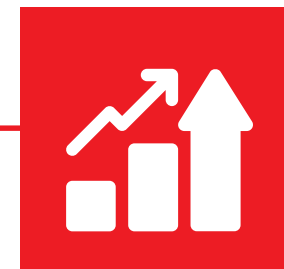
- Safety – Spillway Improvements
- Compliance - Flooding Requirements
- Assess Lake Sediment Removal

Activities



- 2013 Initial Design (Put on-hold)
- 2016 TCEQ – Design Storm Study
- 2019 City-Wide Coordination and Feasibility Study

Goals



- Regulatory Compliance for Condition & Capacity of Dam and Spillway
- Implementation Plan for Lake Sedimentation Removal

Bachman Dam & Lake Dredging Projects Status Update



Community Input



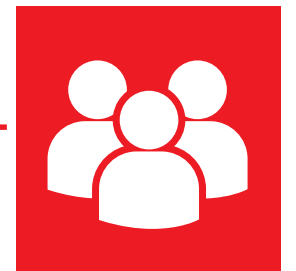
We believe in being a good neighbor to our community.



Are your priorities still the same or have they changed?



What would you like to see with community connections?



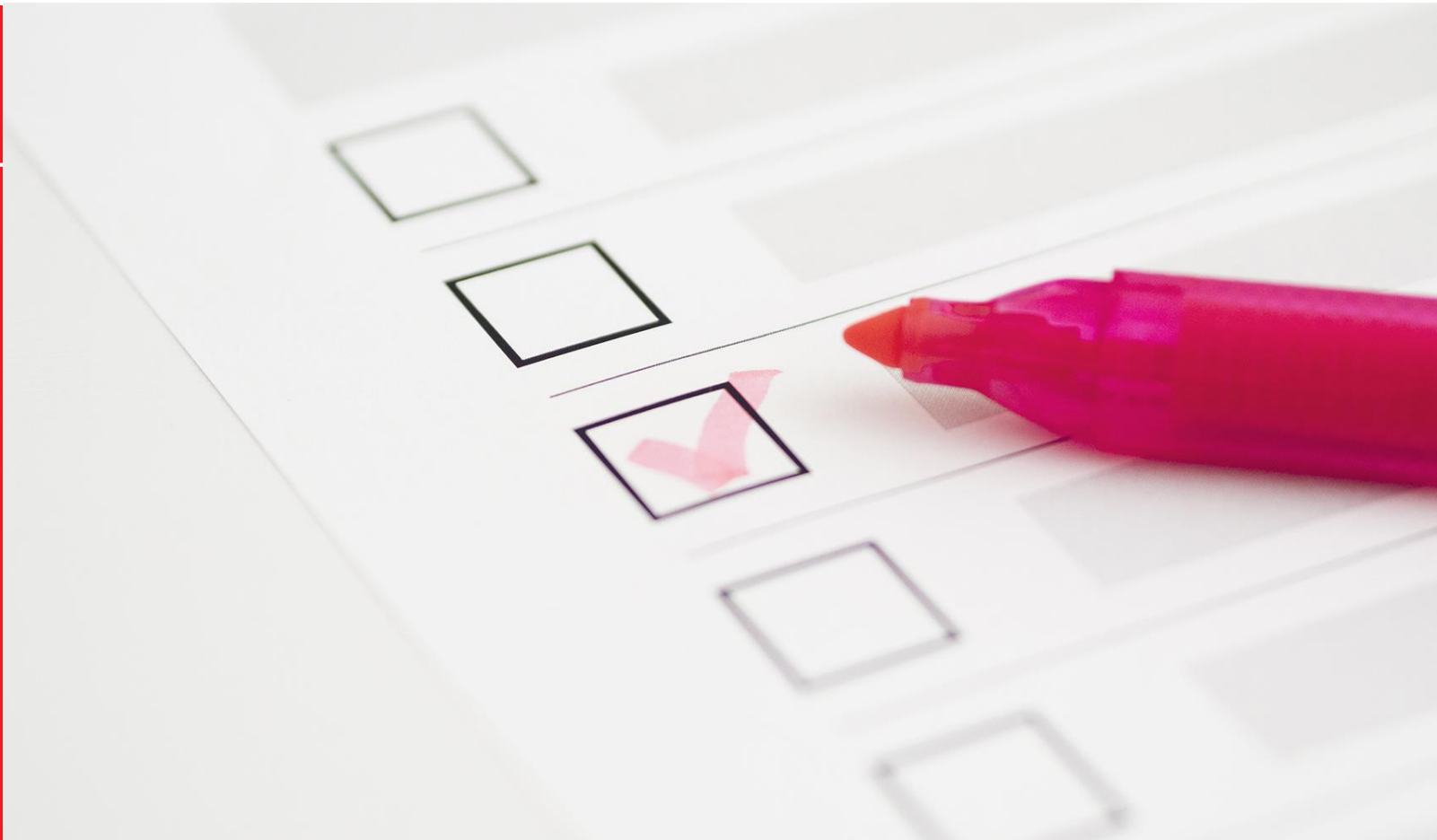
What else can make us a good neighbor?

We Want to Hear from YOU!

COMMUNITY INPUT SURVEY

Please give us your thoughts and ideas to help us be a good neighbor by taking the GNP Community Input Survey.

bit.ly/GNP-CommunitySurvey
bit.ly/GNP-CommunitySurveyES



Contact Us

Mark Duebner

Director of Aviation

 214-670-6077

Dallas Love Field Administration

7555 Lemmon Avenue, Dallas, TX 75209

Dallas Love Field Terminal

8008 Herb Kelleher, Dallas, TX 75235



Dallas-LoveField.com
GoodNeighborPlan.com



Let's Get Social

Follow Dallas Love Field on social media to keep up-to-date with the latest news, highlights, project updates, as well as existing events to breaking news. Get connected by following @DallasLoveField today!



Thank
You

Thank You
for joining us