

# *Clean, Healthy Environment*



**Council Planning Session**

**January 16, 2008**



# Team Members

- Yasmin Barnes, Street Services
- Zaida Basora\*\*, Public Works & Transportation
- Liza Bustamante, Equipment & Building Services
- Nicole Cooper, Office of Environmental Quality
- Morgan Dadgostar, Water Utilities
- Alicia Moore, Office of Financial Services
- Staci Thrasher\*, City Manager's Office
- Michael Wheeler, Environmental & Health Services
- Matt Yager, Strategic Customer Services

**\*\*Team Lead**

**\* Team Facilitator**



# Roadmap

- Envisioned Future
- Council Objectives
- Strategy Map
- Strategies & Data
- Links to other KFAs



# Envisioned Future

- Dallas is a sustainable community with a clean, healthy environment

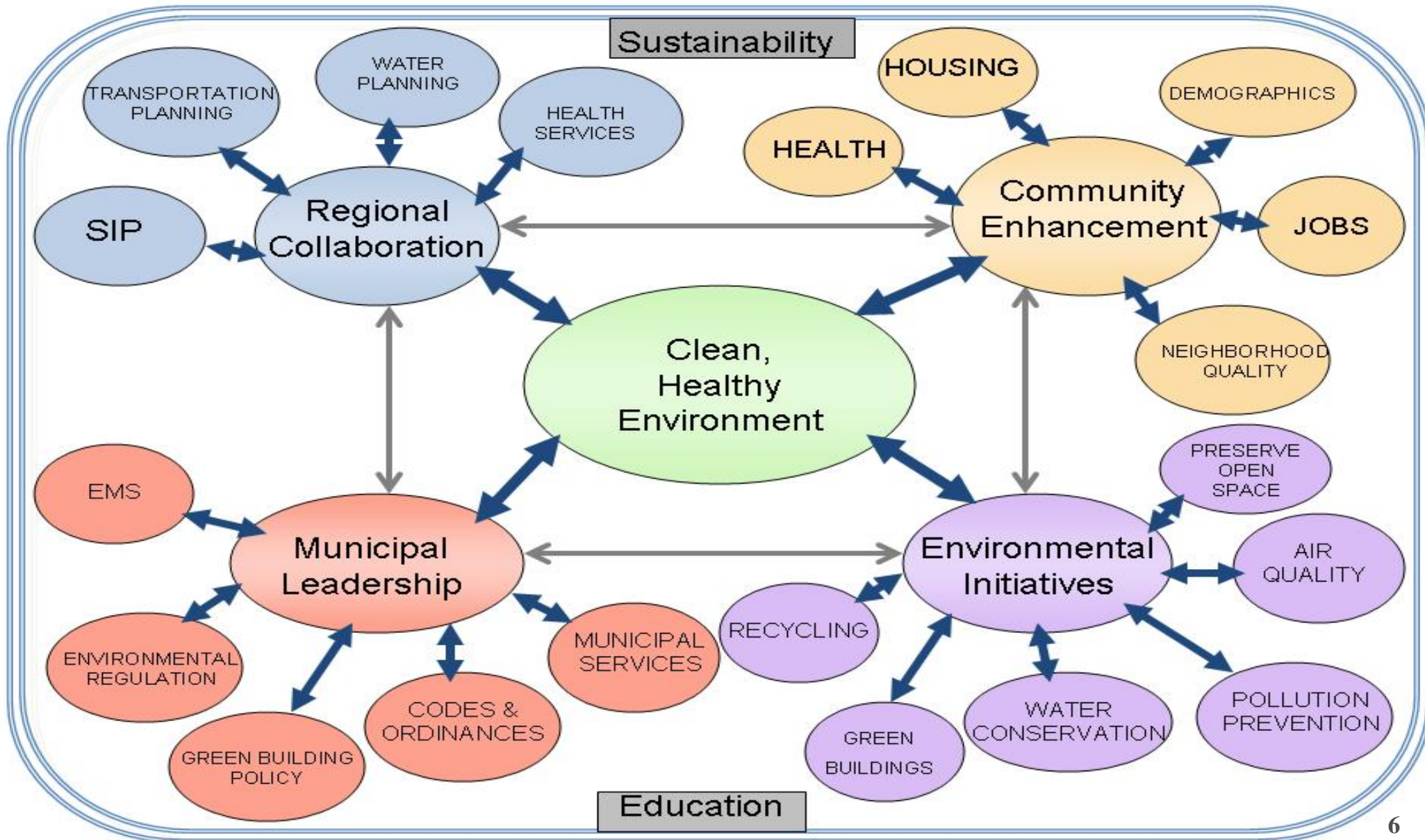


# Council Objectives

Indicator	Current Data
<p><b><u>Produce a “Cleaner” City:</u></b> 5% reduction in Top 3 Service Requests by the end of FY 08-09</p>	<p><b>Top 3 service requests in FY 06-07:</b></p> <ol style="list-style-type: none"> <li>1. High Weeds: 52,621</li> <li>2. Litter: 27,574</li> <li>3. Loose Aggressive Animals: 24,463</li> </ol>
<p><b><u>Improve Quality of Air:</u></b></p> <ul style="list-style-type: none"> <li>• Take leadership role in getting SIP approved by 2009</li> <li>• Adopt wider green building policy: implement by end of 2009</li> </ul>	<ul style="list-style-type: none"> <li>• The DFW area needs additional emissions reduction in order for the SIP to be approved</li> <li>• Municipal green building policy in place</li> <li>• Green building policy for private development underway</li> </ul>
<p><b><u>Water Consumption:</u></b> Reduce Consumption to 199 gallons per capita per day (GPCD) by 2011</p>	<p>Average water consumption in GPCD decreased between 2002 and 2004 from 236 to 212, then increased to 216 in 2005 and 224 in 2006 due to the drought, and was 190 in 2007 due to the excessive rain</p>
<p><b><u>Recycling:</u></b> Increase household recycling to 30 lbs per month by end of FY 2011</p>	<p>In FY 06-07, household recycling averaged 14.7 lbs per month an increase of 79% from FY 05-06</p>
<p><b><u>Homeless:</u></b></p> <ul style="list-style-type: none"> <li>• Reduce homelessness by 10% by 2009</li> <li>• Reduce percentage to 35% by 2010</li> </ul>	<ul style="list-style-type: none"> <li>• In 2007, the City of Dallas had 5,163 homeless individuals</li> <li>• In 2007, 48% of Dallas residents felt homelessness was a major problem, down from 50% in 2006</li> </ul>



# FY 2008-09 Strategy Map



# Municipal Leadership

## COUNCIL OBJECTIVES

Produce a “Cleaner” City  
 Improve Quality of Air  
 Water Consumption  
 Recycling

## STRATEGY

Support environmental efforts through the enforcement of and adherence to health and environmental regulations



## SUB-STRATEGIES

	SUB-STRATEGIES
1	Enhance and effectively enforce City Codes and ordinances regarding health and the environment
2	Improve City operations and purchasing policies to reduce environmental impact
3	Comply with all federal, state and local regulations regarding health and the environment



# Municipal Leadership

- On May 23, 2007, the Dallas City Council passed a City Ordinance prohibiting vehicle operators with gross weight over 14,000 lbs to idle for more than 5 minutes (enforcement begins Ozone season 2008)
- In May 2007, the City changed its cement purchasing strategy to encourage kilns to reduce their contribution to the DFW ozone problem
- On October 24, 2007, the Dallas City Council adopted a resolution outlining their commitment to a policy calling for all new buildings constructed in Dallas to meet “green” standards



# Environmental Initiatives

## COUNCIL OBJECTIVES

Improve Quality of Air  
Water Consumption  
Recycling

## STRATEGY

Promote positive environmental behaviors and practices by the City of Dallas and its residents



## SUB-STRATEGIES

	SUB-STRATEGIES
1	Develop and implement initiatives and programs that focus on improving air quality, water conservation, recycling, etc.
2	Increase public awareness, education and training related to the City's environmental initiatives
3	Enhance natural settings and preserve open space
4	Work with businesses and residents to prevent and reduce emissions and other environmental pollutants



# Environmental Initiatives

- Since the initiation of the DWU Conservation Program in fiscal year 2002, water consumption in gallons per capita per day (GPCD) decreased by nearly 20%, despite a 6% population increase
- There is a growing number of green buildings with Dallas leading the effort. The number of LEED Certified buildings in Dallas is 5, with over 40 registered
- In 2007, 53% of Dallas citizens consider recycling service to be good or excellent, an increase of 17 percentage points from 2006



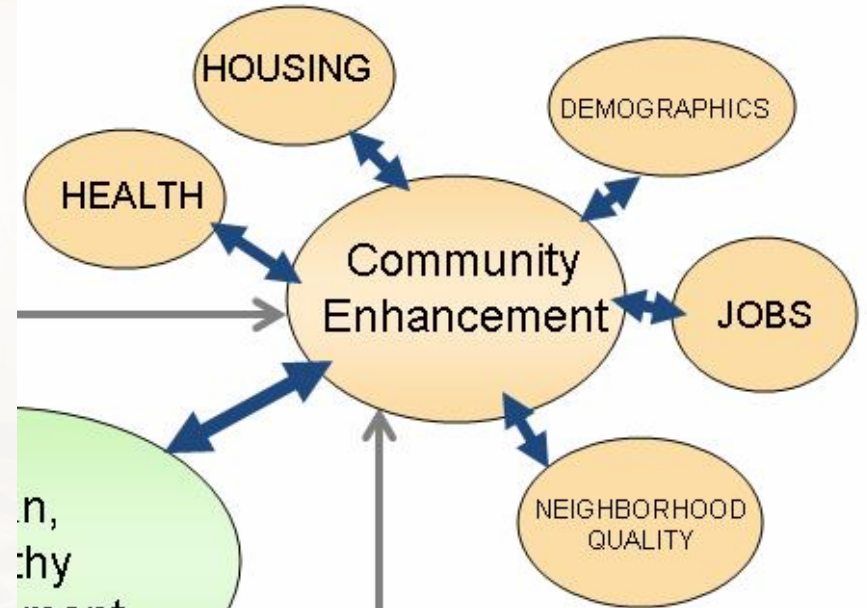
# Community Enhancement

## COUNCIL OBJECTIVES

Produce a “Cleaner” City  
Homeless

## STRATEGY

Enhance the health and livability of Dallas residents and the quality of their neighborhoods



## SUB-STRATEGIES

	SUB-STRATEGIES
1	Improve neighborhood cleanliness by promoting citizen involvement in code compliance
2	Build a sense of community in neighborhoods
3	Provide preventive health resources
4	Implement healthy lifestyle education
5	Create safe/secure environment for the homeless, including housing opportunities and support services



# Community Enhancement

- Service request system provides the community a way to address their concerns and improve neighborhood cleanliness
- In 2007, there were 5,163 persons counted in the Annual Homeless Count, a decrease of 9% from the 2006 number. The new Homeless Assistance Center will open in April 2008



# Regional Collaboration

## COUNCIL OBJECTIVES

Improve Quality of Air  
Water Consumption  
Recycling

## STRATEGY

Work with surrounding municipalities and businesses to improve the quality of the environment



## SUB-STRATEGIES

	SUB-STRATEGIES
1	Enhance community livability through sustainable transportation solutions
2	Take a leadership role in ensuring that DFW SIP approved
3	Provide connectivity among pedestrian, bike, transit and road facilities, and expand transportation modal choices for the Trinity River Development
4	Enhance current water resource planning with surrounding cities
5	Partner and support provision of cost-effective health services by Dallas County and other providers



# Regional Collaboration

- Although Dallas has met the EPA 1-hour standard, the DFW region remains a non-attainment area for the 8-hour standard for ozone
- DART Green Line is under construction with one more line and an extension under design
- Dallas Water Utilities provides treated and untreated water services to 27 communities outside the city limits



# Links to Other KFAs

**Economic  
Vibrancy**

Green Buildings, Housing, Regional  
Collaboration

**Culture, Arts  
& Recreation**

Neighborhood Quality, Preserve Open  
Space

**Public  
Safety**

Codes & Ordinances, Community  
Enhancement

**Educational  
Enhancements**

Community Enhancement,  
Environmental Initiatives

**E3  
Government**

Municipal Services, Environmental  
and Health Regulation, EMS



# FY 2008-09 Strategy Map



# Envisioned Future

- Dallas is a sustainable community with a clean, healthy environment





# Appendices

References and Relevant  
Data

# References

- Metro Dallas Homeless Alliance 2008 Annual “Point in Time” Homeless Count
- 2007 ICMA Dallas Citizen Survey
- Service Performance Reports FY2006-07
- Dallas Water Utilities website  
([http://dallascityhall.com/dwu/water\\_interesting\\_facts.html](http://dallascityhall.com/dwu/water_interesting_facts.html))
- DART website  
(<http://www.dart.org/about/expansion/expansionmaps.asp>)



# Air Quality

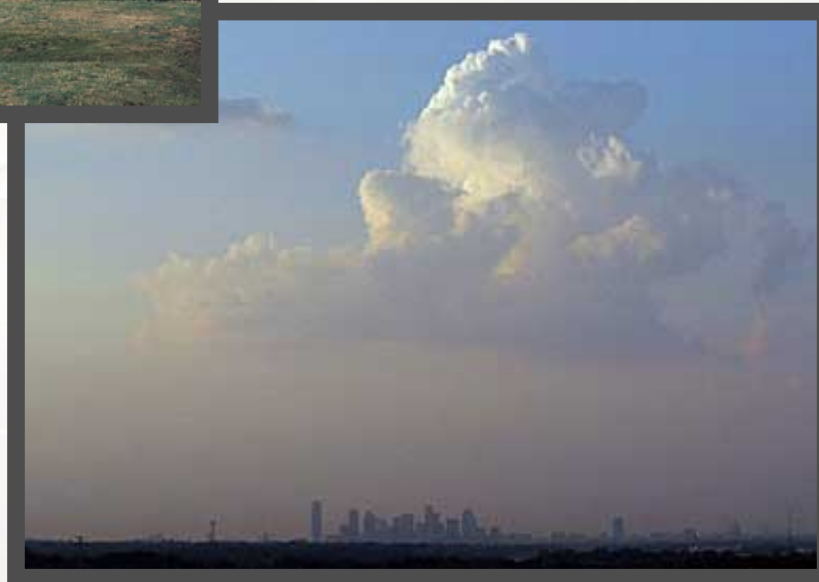


70% of Dallas citizens consider their air quality to be fair or poor

- *Citizen Survey 2007*  
(67% in 2006 survey)

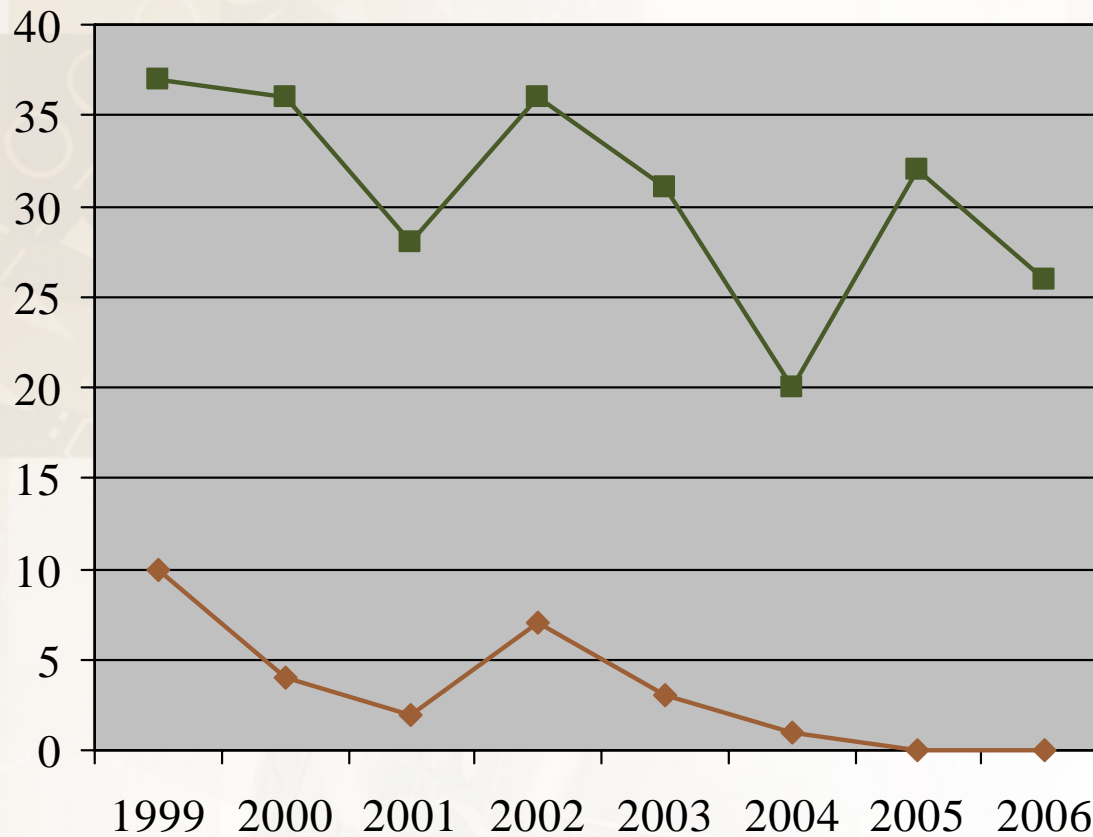
Dallas Metroplex is considered a non-attainment area for ozone

- *EPA*



# Trends

## Dallas Air Quality Trends

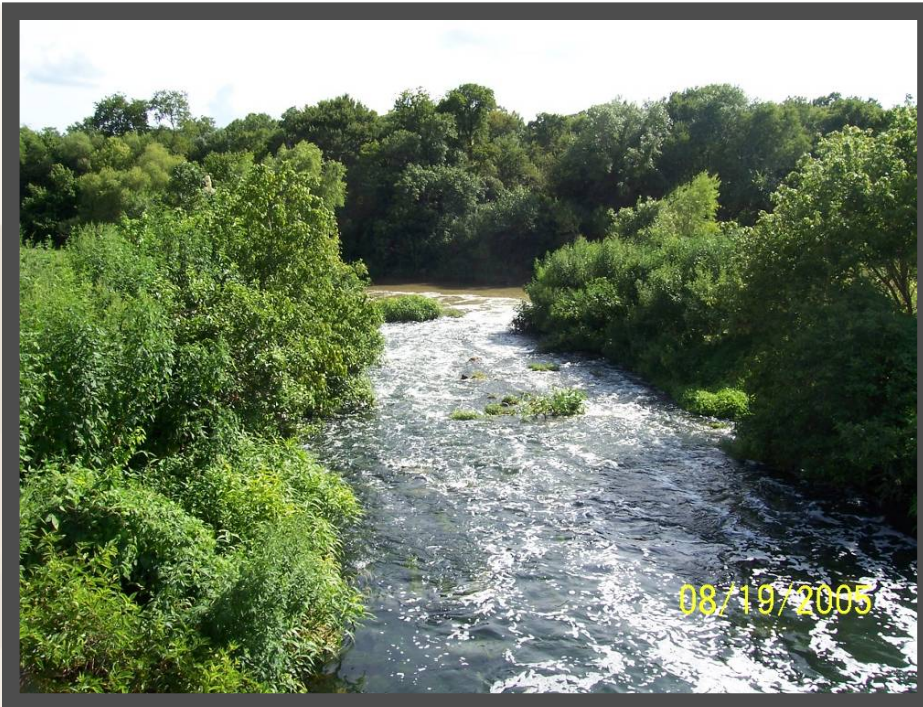


◆ Number of days with One Hour Averages over 125 PPB

■ Number of days with Eight Hour Averages over 85 PPB



# Water Quality

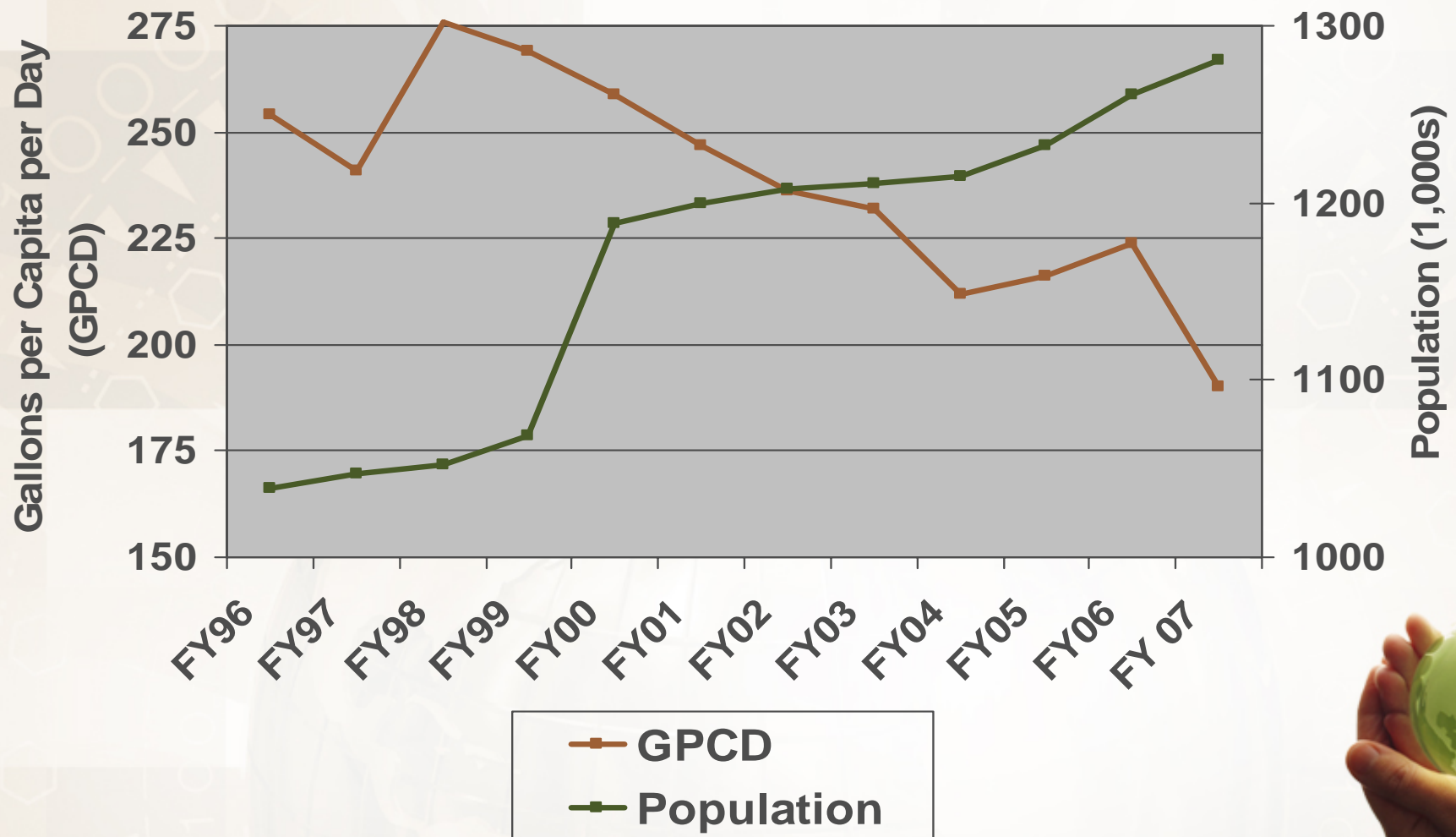


Since the initiation of the DWU Conservation Program in fiscal year 2002, water consumption in gallons per capita per day (GPCD) decreased by nearly 20%, despite a 6% population increase



# Trends

## Annual GPCD and Population



# Recycling Trends

