

Memorandum



DATE October 21, 2011

TO Trinity River Corridor Project Committee Members: Vonciel Jones Hill (Chair)
Linda Koop (Vice Chair), Monica Alonzo, Scott Griggs, Angela Hunt, Delia Jasso

SUBJECT **Trinity River Corridor Project Update on Transportation**

At the next Trinity River Corridor Project Council Committee Meeting on Monday, October 24, 2011, the attached briefing will be presented by Rebecca Rasor, Managing Director, Trinity Watershed Management. This briefing will provide background information and progress reports on the various transportation projects associated with the Trinity River Corridor Project.

Please contact me if you have questions.



Jill A. Jordan, P.E.
Assistant City Manager



THE TRINITY
DALLAS

Attachment

cc: Honorable Mayor and Members of the City Council
Mary K. Suhm, City Manager
A. C. Gonzalez, First Assistant City Manager
Ryan S. Evans, Assistant City Manager
Jill A. Jordan, P.E., Assistant City Manager
Forest E. Turner, Assistant City Manager
Joey Zapata, Interim Assistant City Manager

Kelly High, Director, Trinity Watershed Management
Rebecca Rasor, P.E., Managing Director, Trinity River Corridor Project
Paul D. Dyer, Director, Park and Recreation
Theresa O'Donnell, Director, Sustainable Development & Construction
Rosa A. Rios, Interim City Secretary
Helena Stevens-Thompson, Assistant to the City Manager - Council



Trinity River Corridor Project Update On Transportation

Trinity River Corridor Project Committee
October 24, 2011

This project addresses a number of regional concerns, though **flood protection** remains the **essential cornerstone** of this multi-faceted effort. The inter-related components of the project are:

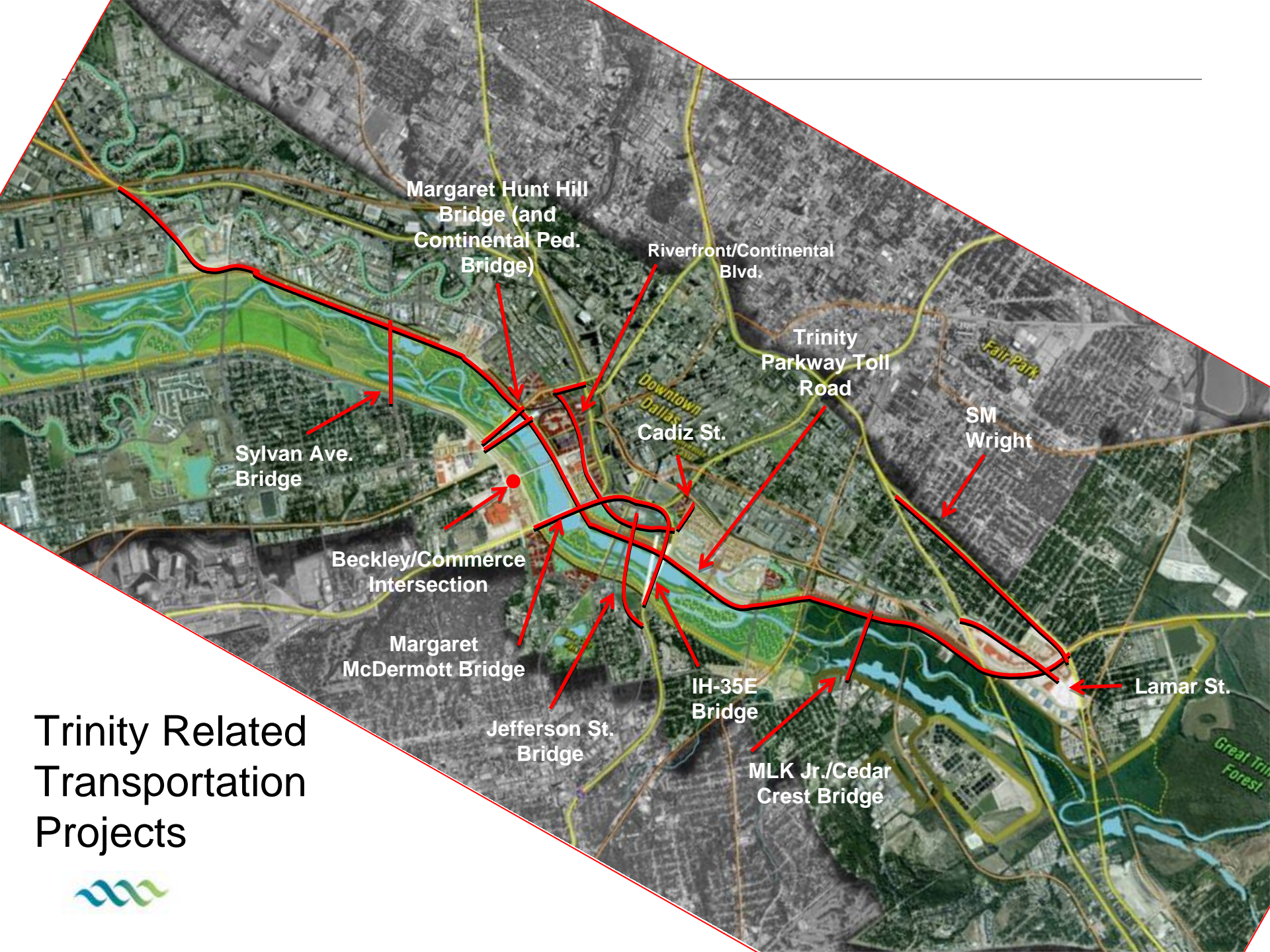
- Flood Protection – September 12, 2011
- Transportation – TODAY, October 24, 2011
- Recreation – November 14, 2011
- Environmental Restoration – Tentatively January 2012
- Community/economic development - Tentatively January 2012



Today's Briefing

- Bridges
 - Margaret Hunt Hill
 - Sylvan Ave.
 - Continental Ave.
 - MLK, Jr./Cedar Crest Ave.
 - IH-35E
 - Jefferson St.
 - Margaret McDermott (IH-30)
- Thoroughfare Improvements
 - SM Wright
 - Riverfront Blvd./Continental Ave.
 - Lamar St.
 - Beckley/Commerce Intersection
 - Cadiz St.
- Loop Road System
- Trinity Parkway





Margaret Hunt Hill
Bridge (and
Continental Ped.
Bridge)

Riverfront/Continental
Blvd.

Trinity
Parkway Toll
Road

SM
Wright

Sylvan Ave.
Bridge

Downtown
Dallas
Cadiz St.

Beckley/Commerce
Intersection

Margaret
McDermott Bridge

IH-35E
Bridge

Lamar St.

Jefferson St.
Bridge

MLK Jr./Cedar
Crest Bridge

Trinity Related Transportation Projects



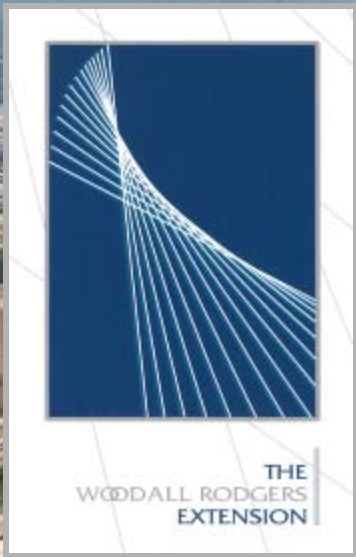
Margaret Hunt Hill Bridge

**Margaret Hunt Hill Bridge
under construction
complete in 2012**



Visit the webcam at
www.trinityrivercorridor.org
to view construction progress





Singleton Blvd.

Continental Ave.

Riverfront Boulevard

Spur 366 (Woodall Rodgers)

IH 35E

Sylvan Ave. Bridge



- TxDOT/City of Dallas project
- Construction cost \$42 million
- Construction start February 2012 with a 27 month duration (15 months maximum total shutdown)

Continental Ave. Pedestrian/Bicycle Bridge



- Funded by \$10 million private donation
- Construction to begin as soon as Margaret Hunt Hill Bridge is open to traffic



Moore Park Trail Extension

Estimated cost - \$2.9 M
(potential funding from
1998 bond funds)

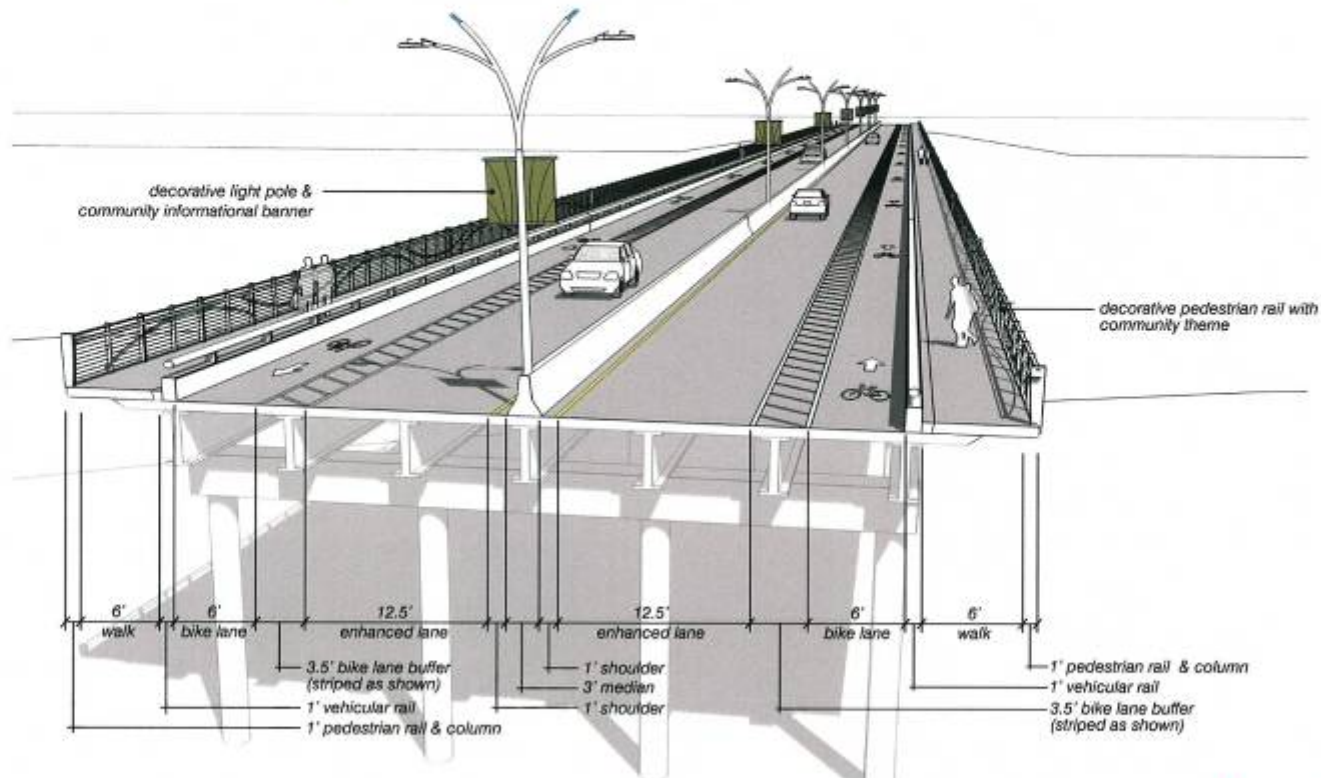


MLK Jr./Cedar Crest Bridge

- Estimated cost - \$3.8 M (potential funding TBD)
- Design to be completed in Fall 2012

Key Design Elements:

- Gateway Features
- 2 Traffic Lanes
- Inside/Outside Barriers
- Buffered Bike Lanes
- Pedestrian Walk (6 Ft Wide)
- Enhanced Lighting
- Speed Limit Reduction (To 35 Mph)



Jefferson St. Bridge

- TxDOT project to replace existing bridge with 6 lanes (two way traffic)
- Direct connections to/from IH-35E
- Existing bridge and interchange at Zang expected to be demolished
- Design is in schematic phase now; no schedule or funding identified





Ideal Neighborhood

Rochester Park

Phase 2

S.M. Wright Freeway

Lamar

Proposed Trinity Parkway

Phase 1



S.M. Wright

S.M. Wright Parkway

- Phase 1 connection to IH-45 eliminates need for “Dead Man’s Curve” at US 175 and S.M. Wright
- Provides opportunity to make S.M. Wright a low-speed road with pedestrian crossings, sidewalks, landscaping
- Phase 1 scheduled for construction 2013-2016; Phase 2 will begin construction after Phase 1 segment is complete
- Estimated cost of Phases 1&2 is \$150 million
- Phase 1 will be a free (non-tolled) segment of the Trinity Parkway



A grayscale map of a city area with a river on the left. Three routes are highlighted: an orange line at the top, a red line curving from the orange line down to the river, and a blue line extending from the red line towards the right. Three labels in white boxes with black borders are placed near the routes: 'Continental' in orange text near the orange line, 'Riverfront Boulevard' in orange text near the red line, and 'Cadiz' in blue text near the blue line.

Continental

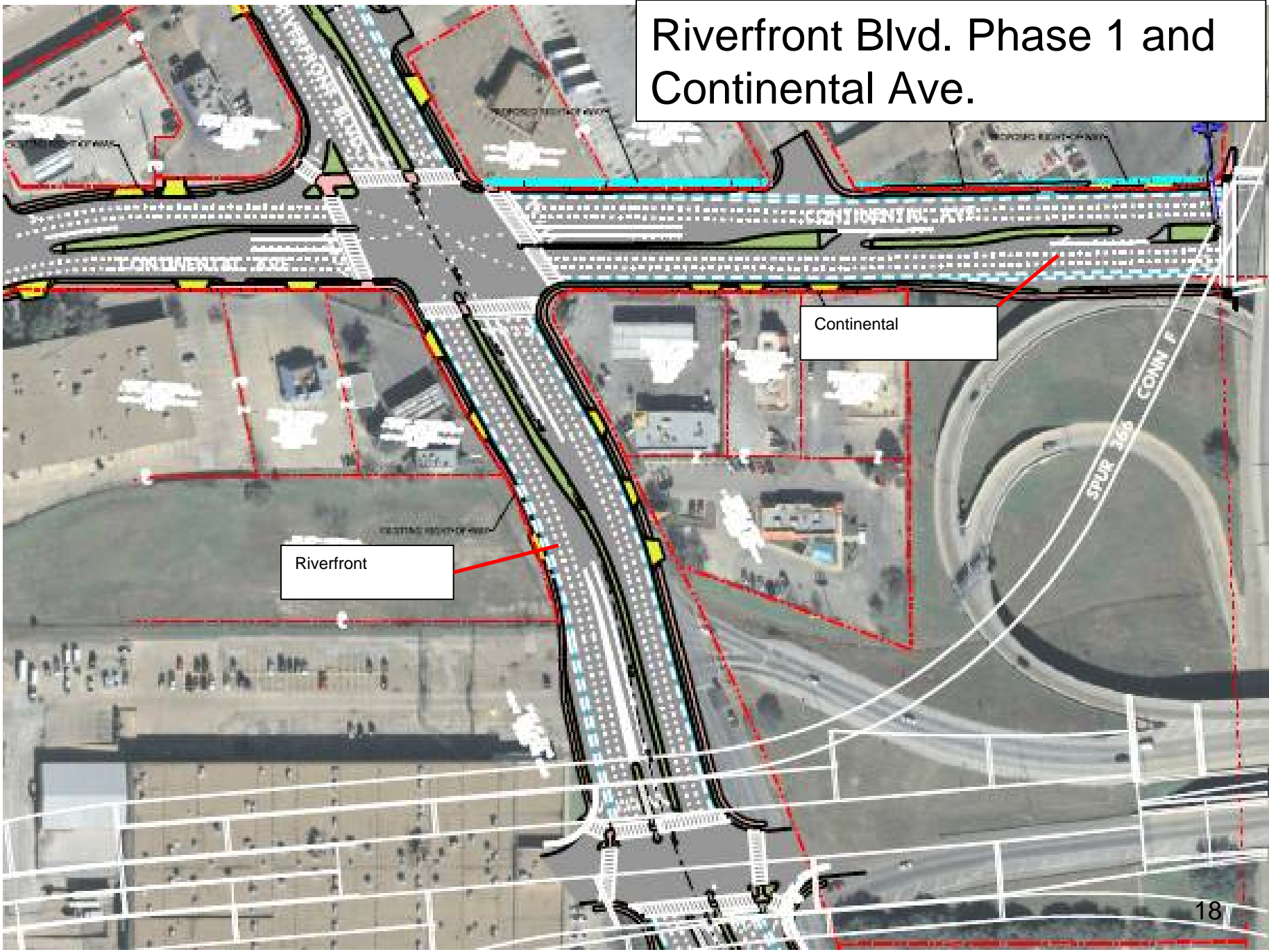
Riverfront Boulevard

Cadiz

- Entire limits are from Continental to Cadiz
 - Phase 1 is from Continental to Woodall Rodgers
 - Phase 2 is from Woodall Rodgers to Cadiz
- Phase 1 will be 6 lane with appropriate turning lanes due to traffic volume need and connections to other existing roadways
- Phase 2 evaluation will determine 6 lane vs. 8 lane, pedestrian / bicycle amenities, streetscaping, and limits of improvements
- Updates will be provided at a future Council Committee meeting



Riverfront Blvd. Phase 1 and Continental Ave.



Riverfront

Continental

- Phase 1 estimated cost and schedule (including Continental Ave.)
 - Total cost \$12.6 M
 - Design to complete by March 2012
 - Construction to start by July 2012
 - Construction to complete by late 2013
- Phase 2 estimated cost and schedule
 - Total cost \$29.4M
 - Schedule TBD based on evaluation and input



South Lamar from IH 45 to Haven Street

- Scope of Work
 - Option 1 – Reconstruct pavement to four (4) lane divided with slip lane on south side near metal recycling; includes buffered bike lane with street trees and urban design amenities
 - Option 2 – Reconstruct pavement to five (5) lane with buffered bike lane; includes street trees and urban design amenities
- Estimated Total Costs
 - Option 1 - \$7.3 M
 - Option 2 - \$7.2 M
- Funding shortfall
 - Option 1 - \$7.3 M
 - Option 2 - \$7.2 M
- Estimated Schedule (contingent on inclusion in future bond program)
 - Begin design Mid 2013
 - Complete design Late 2014
 - Begin construction Mid 2015
 - Complete construction Late 2016



South Lamar – Option 1



Existing

Rendering from
Gold Metal Recycling



Beckley/Commerce Intersection Improvements



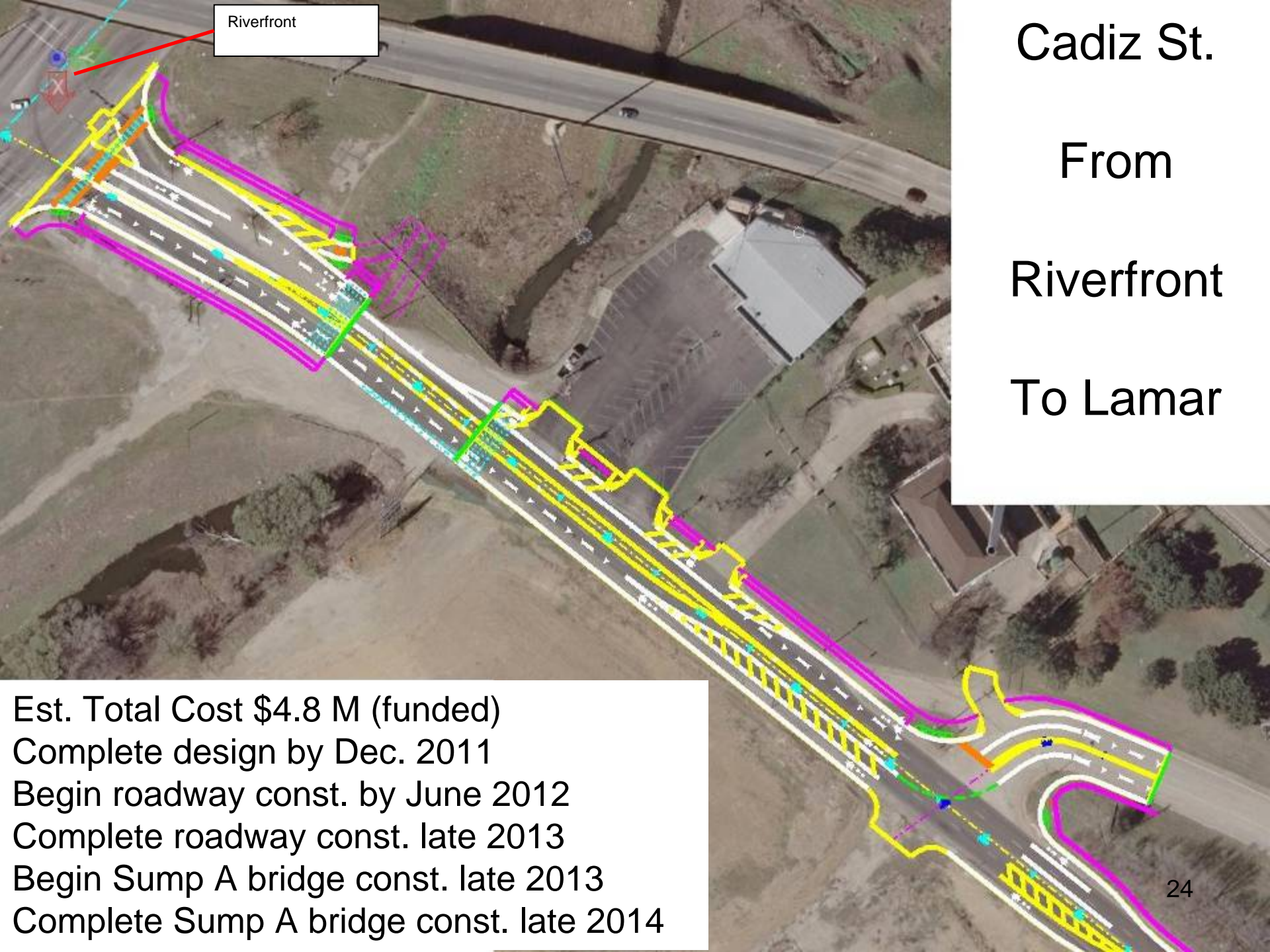
North Beckley Avenue Improvements - conceptual rendering
Beckley / Commerce Intersection - (view looking Southeast)

* The final number of vehicle lanes is to be determined, pending a traffic study, to be completed by the City of Dallas.

** These conceptual plans are preliminary, and are subject to change based on several factors, including but not limited to: engineering limitations, City Code requirements, and revisions to the City Thoroughfare Plan and City Bicycle Plan

- Design underway, to be completed in March 2012
- Estimated total cost - \$3.6M (\$2.2M funding gap)
- Construction scheduled to begin in September 2012 (15-18 month duration), contingent on funding





Riverfront

Cadiz St.

From

Riverfront

To Lamar

Est. Total Cost \$4.8 M (funded)
Complete design by Dec. 2011
Begin roadway const. by June 2012
Complete roadway const. late 2013
Begin Sump A bridge const. late 2013
Complete Sump A bridge const. late 2014

Trinity Corridor Loop Road System




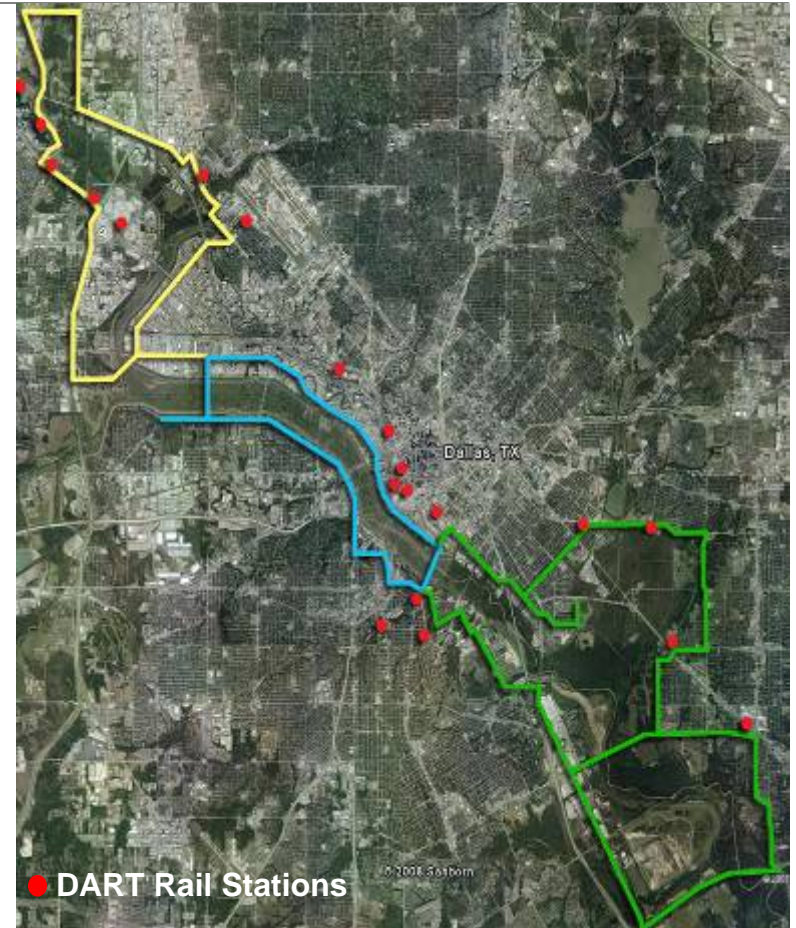

**Trinity Fields Loop Road &
DART Stations**




**Trinity Lakes Loop Road &
DART Stations**




**Trinity Forest Loop Road
& DART Stations**



- The Trinity Corridor Loop Road System defines the Trinity Fields, Lakes and Forest as an extension of the Trinity identity, way-finding and signage program.
- The signage program should include the DART Rail System for public transportation interface to the park, while the loop roads can be used for tourists activities (driving tours).



Trinity Parkway

- In 2009, a Supplemental Draft EIS was released to the public which included additional hydraulic & hydrologic modeling, and development of alternatives 3C & 4B
- After the public hearing for the SDEIS, the Federal Highway Administration (FHWA) required the preparation of a Limited Scope Supplement to the Supplemental Draft EIS (LSS-SDEIS) to incorporate the findings of the Periodic Inspection #9 and to ensure compatibility of the Parkway with the levee remediation
- Draft LSS-SDEIS is currently under agency review
- In October 2011, USACE sent a letter to Federal Highway Administration, stating that based on their preliminary studies of the levees, NTTA can use their previous assumptions on levee side slopes in their EIS documents
- NTTA's Trinity Parkway Final EIS is expected in 2012; however, construction cannot start until Corps' EIS on the Dallas Floodway is complete in 2015



Summary of Transportation Projects

- February 2012 – Sylvan Ave. construction begins
- March 2012 - Margaret Hunt Hill Bridge construction complete
- June 2012 – Cadiz St. construction begins
- July 2012 – Riverfront/Continental construction begins
- September 2012 – Beckley-Commerce intersection construction begins (contingent upon funding availability)
- 4th Quarter 2012 – MLK Jr. Gateway design complete
- 1st Quarter 2013 – SM Wright Phase 1 and McDermott/IH-35E bridge construction begins
- 2nd Quarter 2013 – MLK Jr. Gateway construction begins (contingent upon funding availability)



Summary of Transportation Projects

- 3rd Quarter 2013 – South Lamar (IH-45 to Haven St.) design begins
- 4th Quarter 2013 – Cadiz St. and Riverfront/Continental construction complete
- 2nd Quarter 2014 – Sylvan Ave. Bridge construction complete
- 3rd Quarter 2015 – South Lamar (IH-45 to Haven St.) and Trinity Parkway construction begins
 - South Lamar contingent upon bond program funding
 - Trinity Parkway contingent upon USACE Environmental Impact Statement completion
- 4th Quarter 2015 - McDermott/IH-35E bridge construction complete
- 1st Quarter 2016 – SM Wright Phase 2 construction begins
- 4th Quarter 2017 – SM Wright Phase 2 construction complete



Trinity River Project Office

(214) 671-9500

www.trinityrivercorridor.org



THE TRINITY
DALLAS

