



Wholeness Index Briefing  
Dallas City Council  
Public Safety Committee

By Dr. Timothy Bray  
October 1, 2007



Discovering the pieces that make cities whole



## What is the Williams Institute?

- Created in 2005 by the Foundation for Community Empowerment
- Non-partisan, community-focused research center
- Created to bring cutting-edge research tools to the real-world problems of distressed communities
- Dedicated to improving quality of life by identifying policy approaches that will reduce disparities



## Why are we here today?

- To acquaint you with the Wholeness Index
- To provide material for discussion during the luncheon forum at Institute's annual conference on Oct. 22
- (Most importantly) because we exist to serve policy makers like you



## What is wholeness?

- In a whole city, every neighborhood offers residents an equal quality of life
- Disparity is the opposite of wholeness

## Why does wholeness matter?

- Our nation was founded on the promise of equal opportunity for all
- Research shows that, over time, disparities sap cities' economic growth and social cohesion



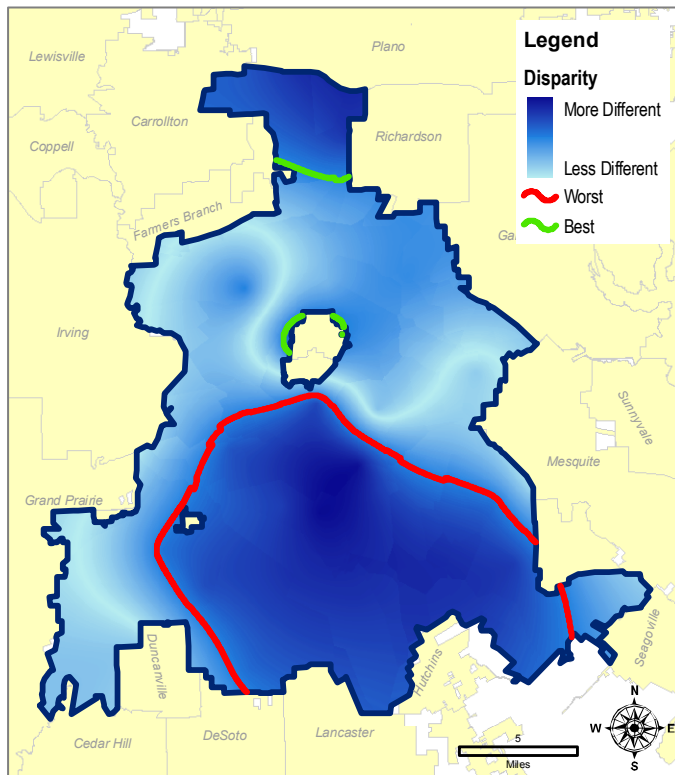
## What is the Wholeness Index?

- Measures disparity, not performance
- Replicable annually and across cities
- Incorporates 12 quality-of-life indicators in 3 domains
  - Economic opportunity
  - Self-sufficiency
  - Civic engagement
- Computes wholeness on a scale of 1 to 100 for each indicator and all of them combined
- Makes data more useful by displaying them spatially<sup>5</sup>



# How to interpret Wholeness Index

## maps



Light blue = areas of least disparity (most like the others)

Dark blue = areas of greatest disparity (least like the others)

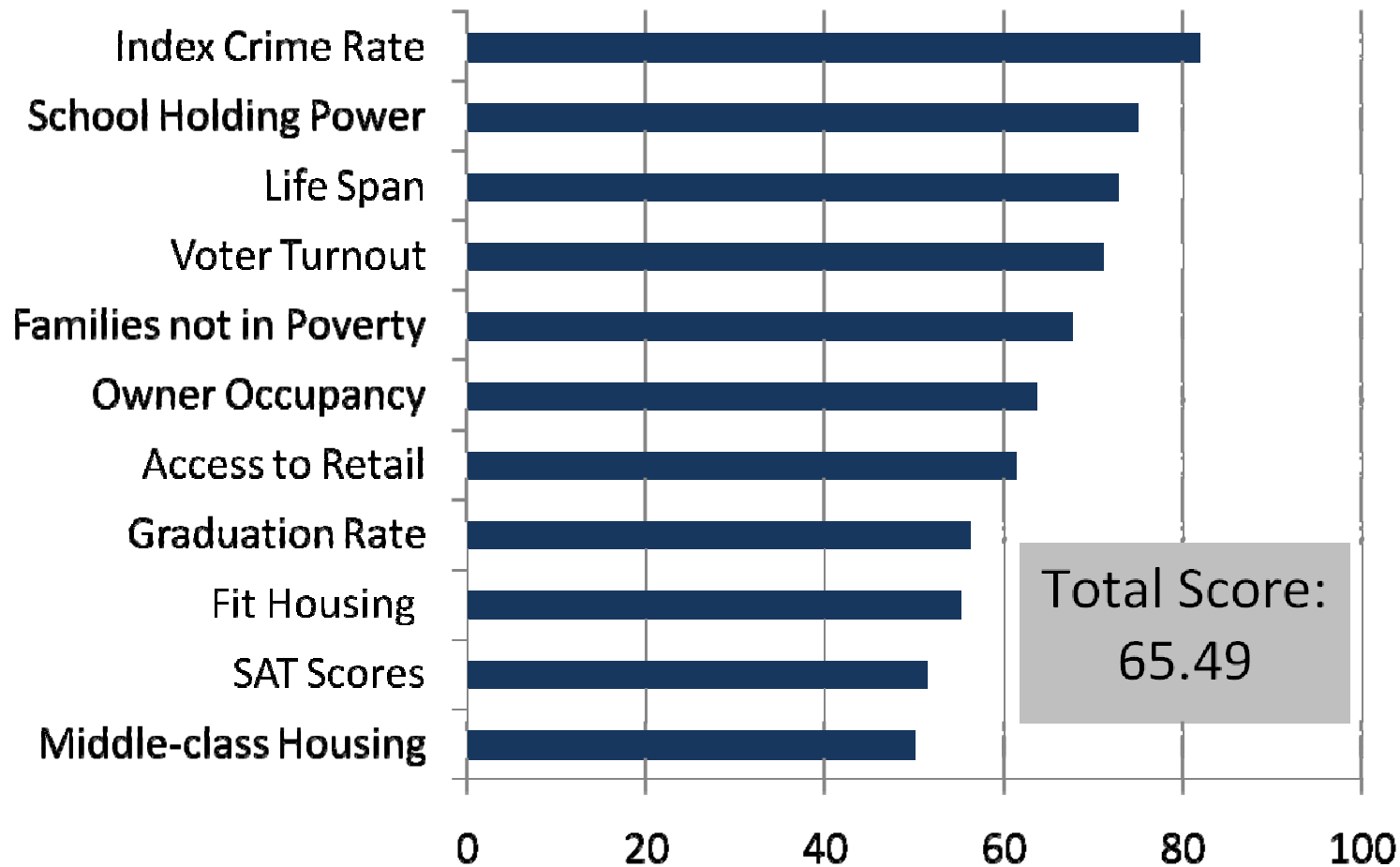
(Disparity can exist in either a desirable “good” direction or undesirable “bad” direction)

Green outlined areas = “best”

Red outlined areas = “worst”

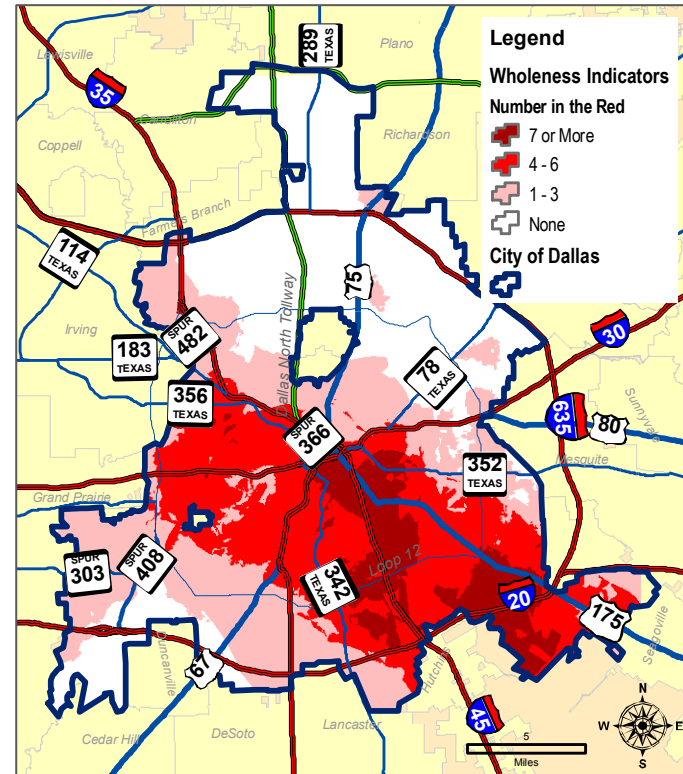
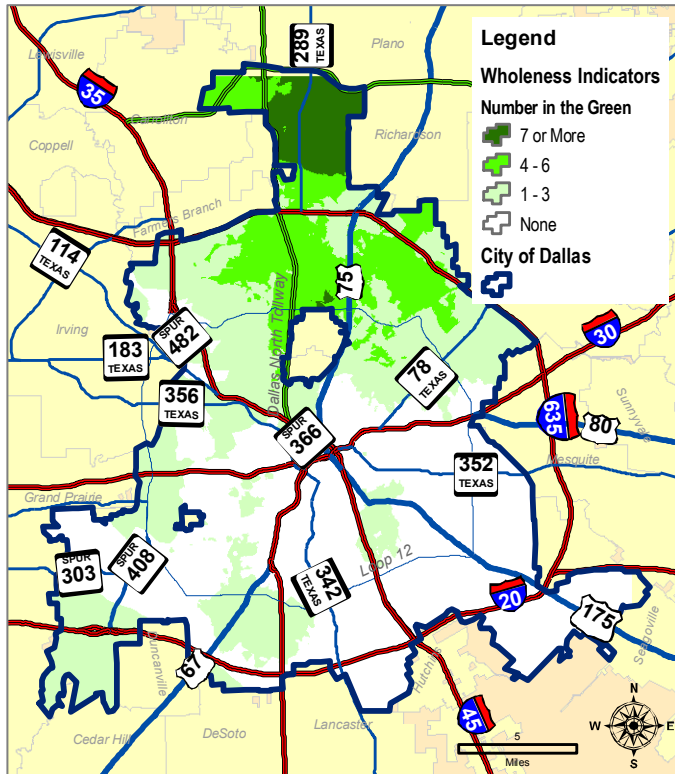


## 2006 Wholeness Index scores





# 2006 composite Wholeness maps





THE J. MCDONALD WILLIAMS INSTITUTE

## Preliminary

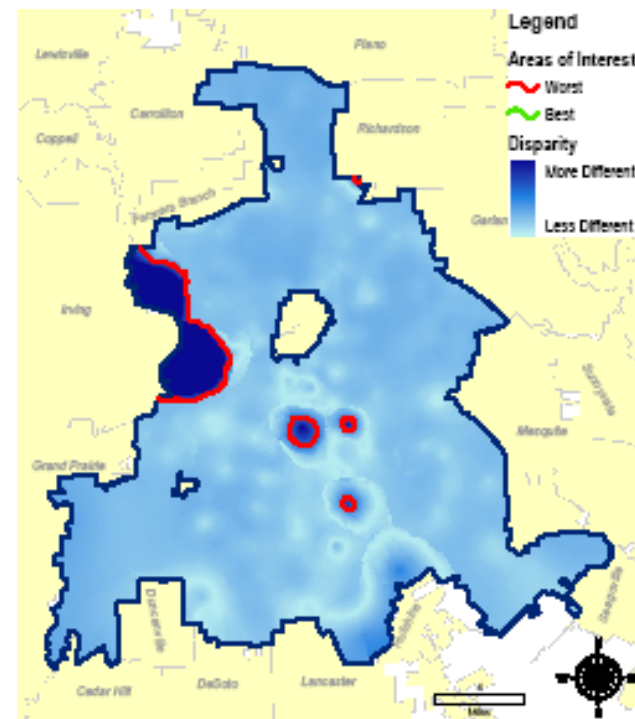
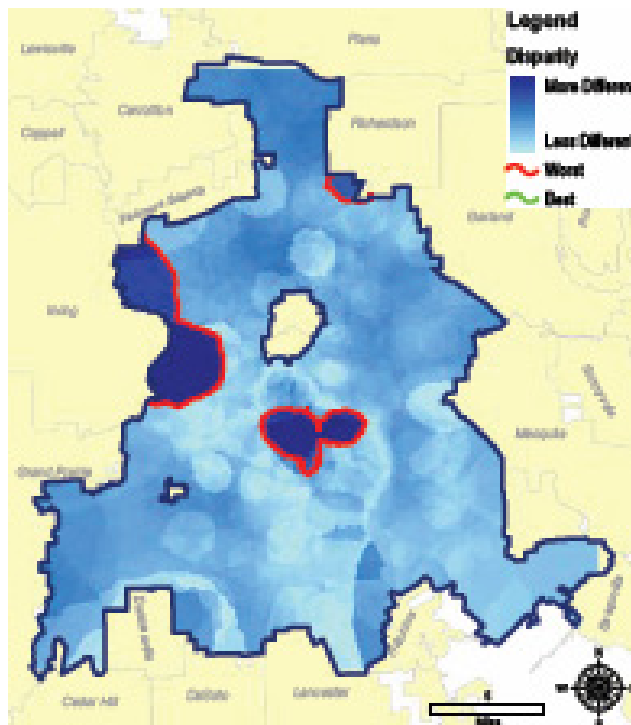
# 2007 Wholeness Index findings



# Index Crime Rate: more whole

2006 Score: 81.76

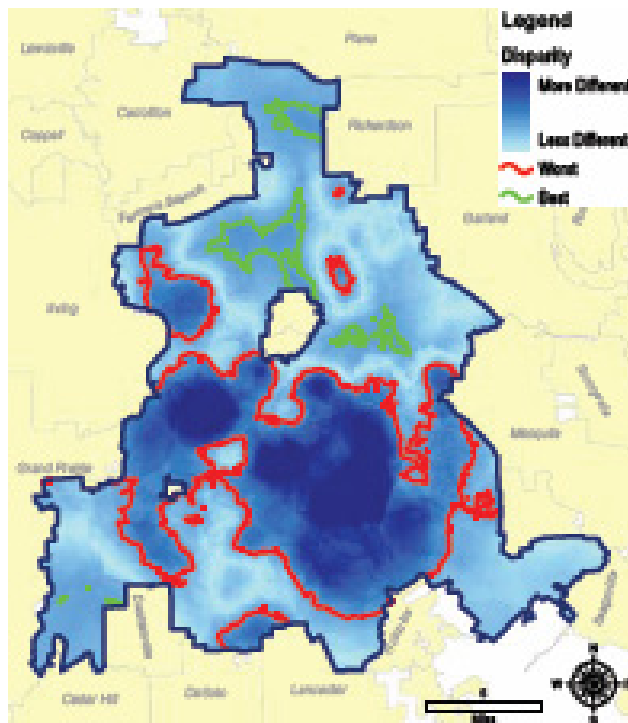
2007 Score: 89.20



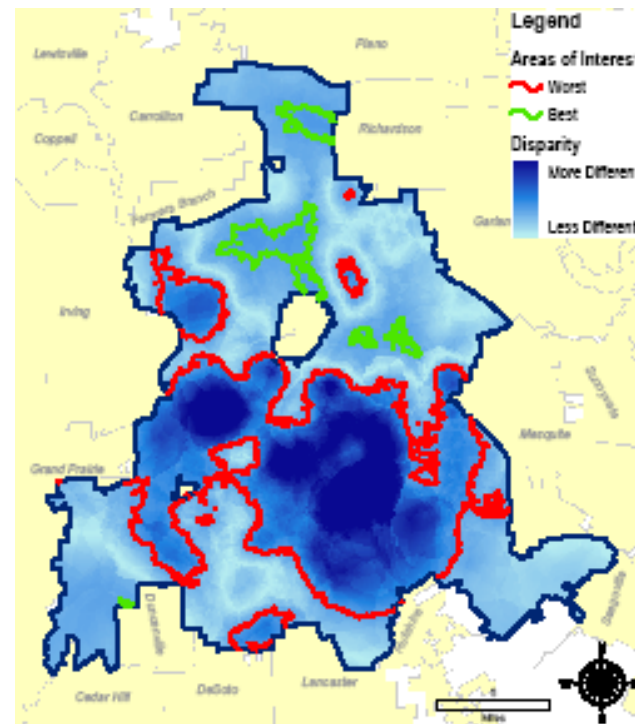


# Families not in Poverty: static

2006 Score: 67.50



2007 Score: 67.21

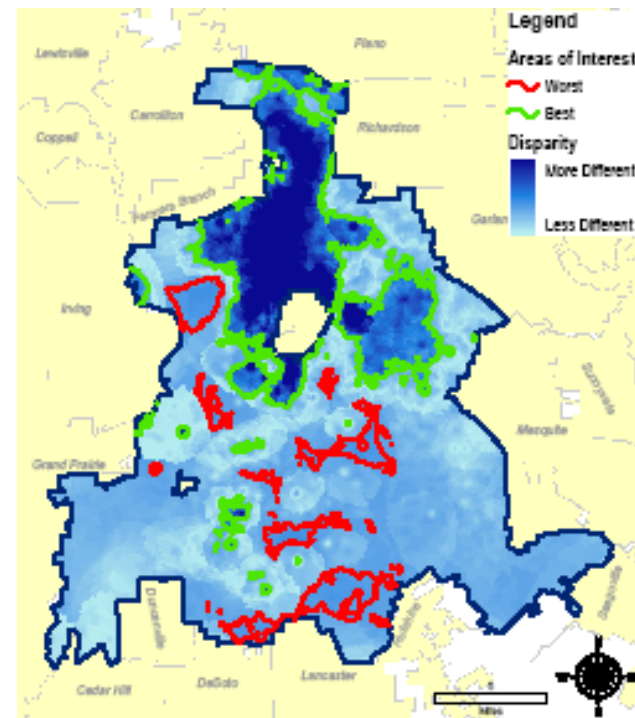
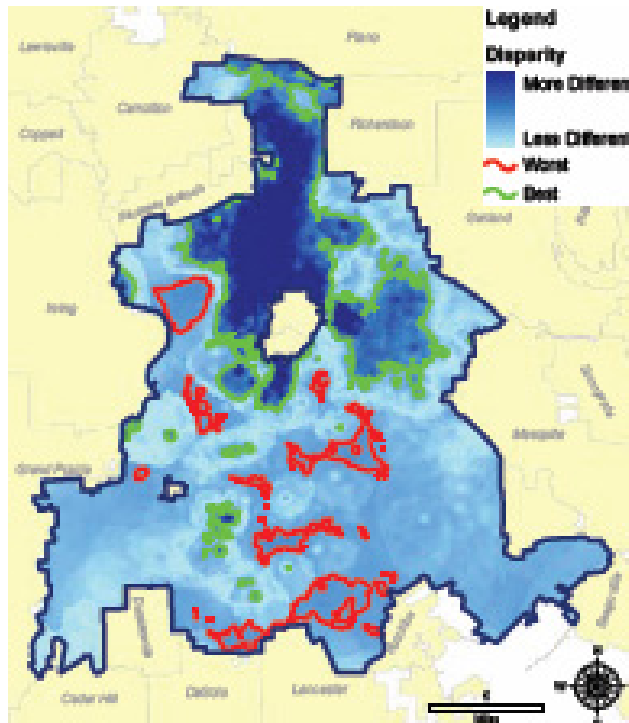




# Wealth: more whole

2006 Score: 80.38

2007 Score: 82.58

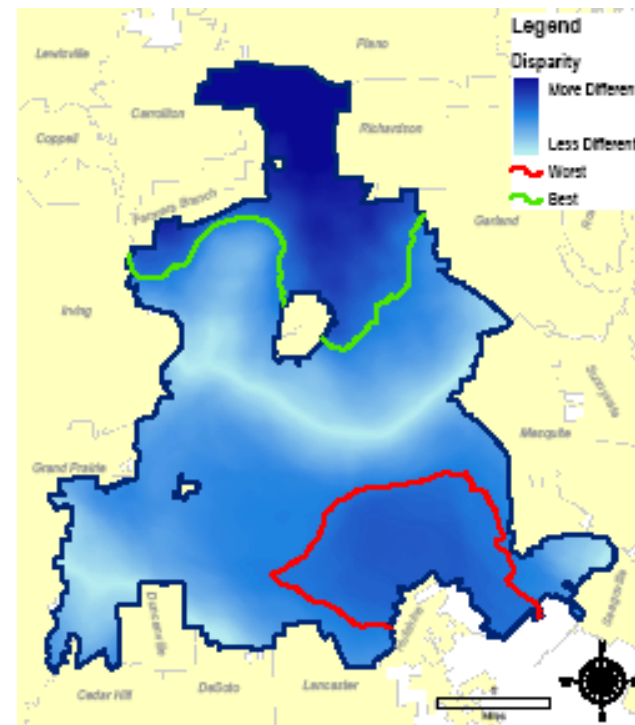
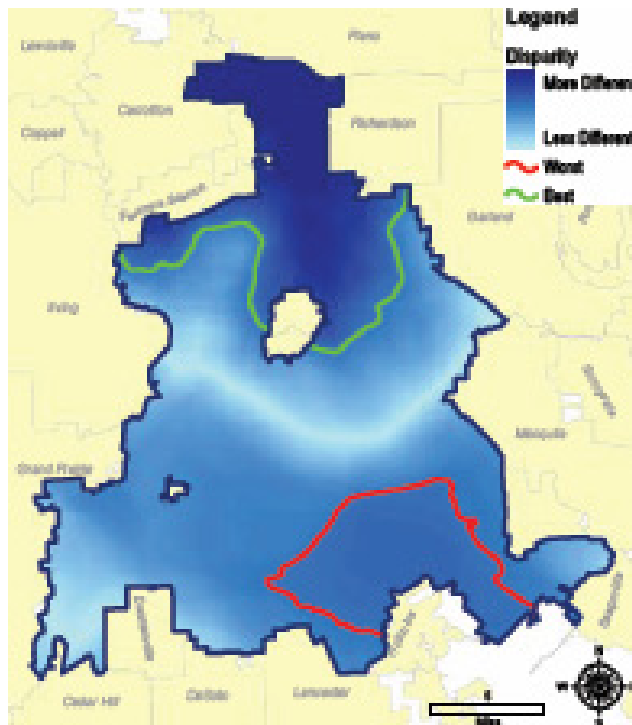




# Middle-class Housing: more whole

2006 Score: 50.02

2007 Score: 55.86

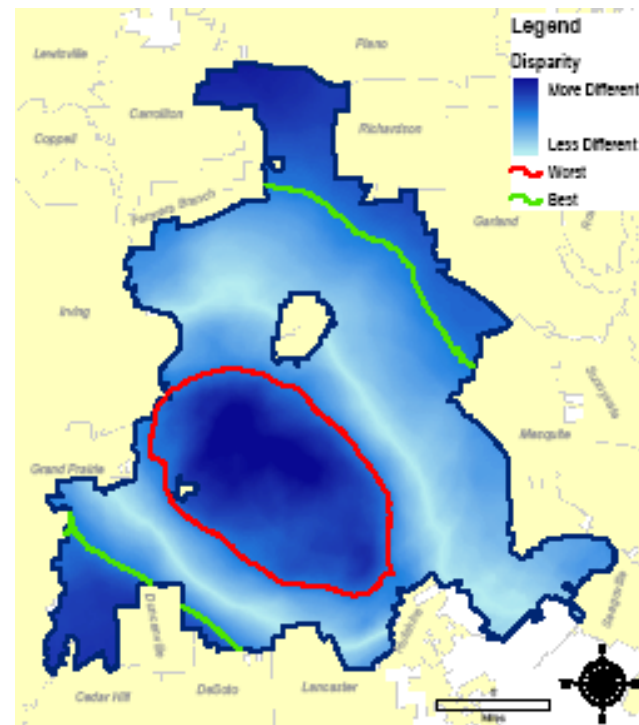
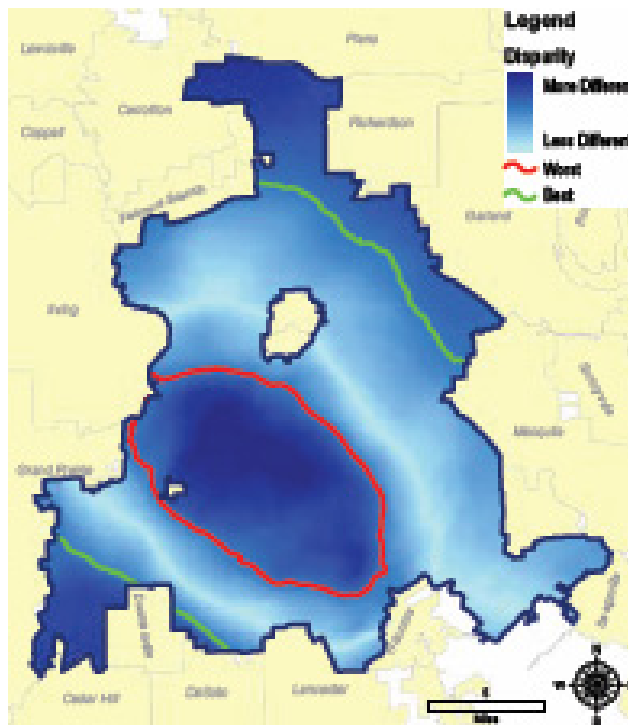




# Fit Housing: static

2006 Score: 55.12

2007 Score: 55.72

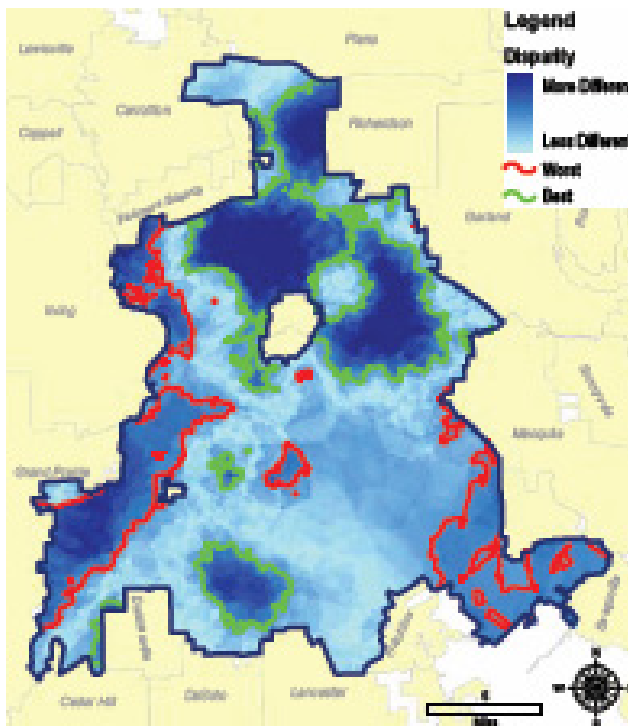




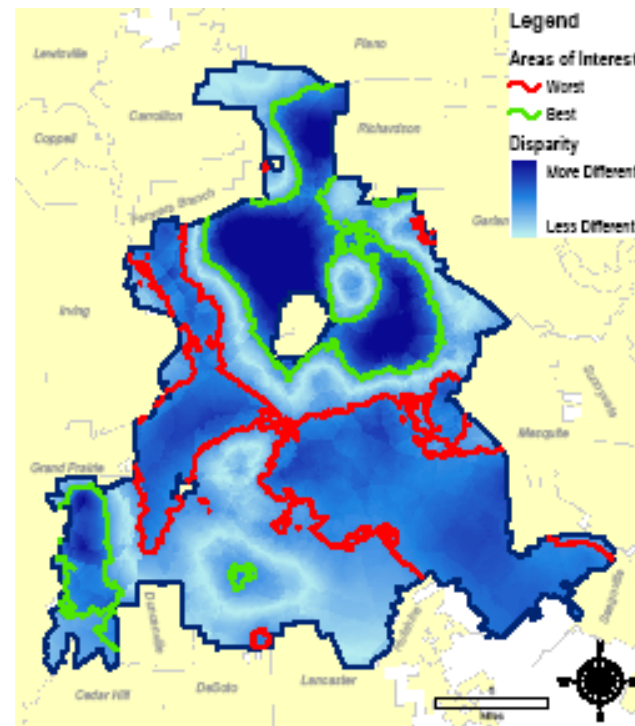
# Voter Turnout: less whole

2006 Score: 71.09

2007 Score: 60.09



November 2005 election



November 2006 election



## Preliminary insights

- As intended, the indicators we selected are ones that can experience change from year to year – although some may be more easily moved than others
- That means **greater wholeness is achievable**



## What to expect next

Oct. 8: Briefing to Quality of Life Committee (with scores and maps completed for additional indicators)

Oct. 11: 2007 Wholeness Index bus tour (10 a.m. – noon)

Oct. 18: Delivery of completed Wholeness Index Report

**Oct. 22:** We look forward to hosting you at the Williams Institute's Third Annual Conference and hearing your thoughts on what we can do, working together, to foster wholeness