

# **South Central Division and Patrol Realignment**

New Facility & Service Model

August 7, 2006

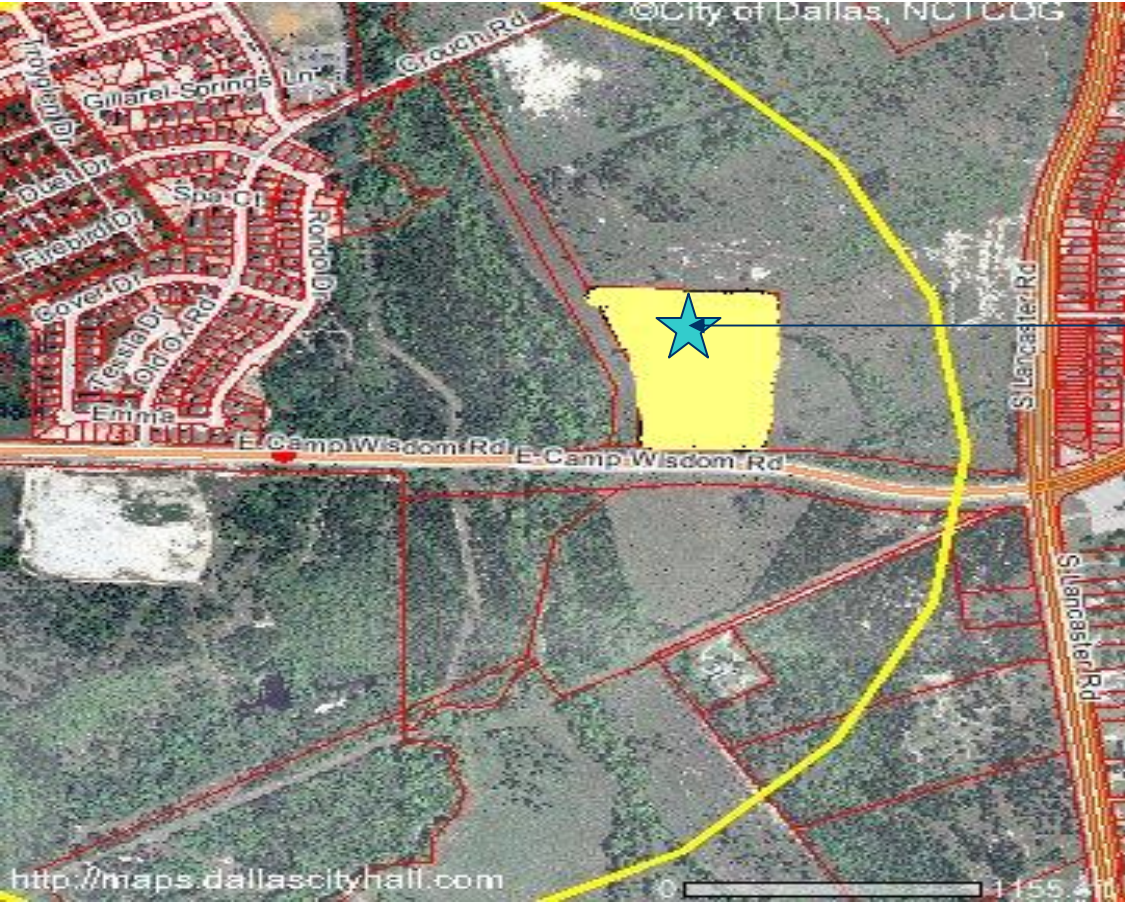
Public Safety Committee

Dallas Police Department

# 1999 East Camp Wisdom Rd. (West of Intersection of Lancaster Rd.)



# Proposed Site

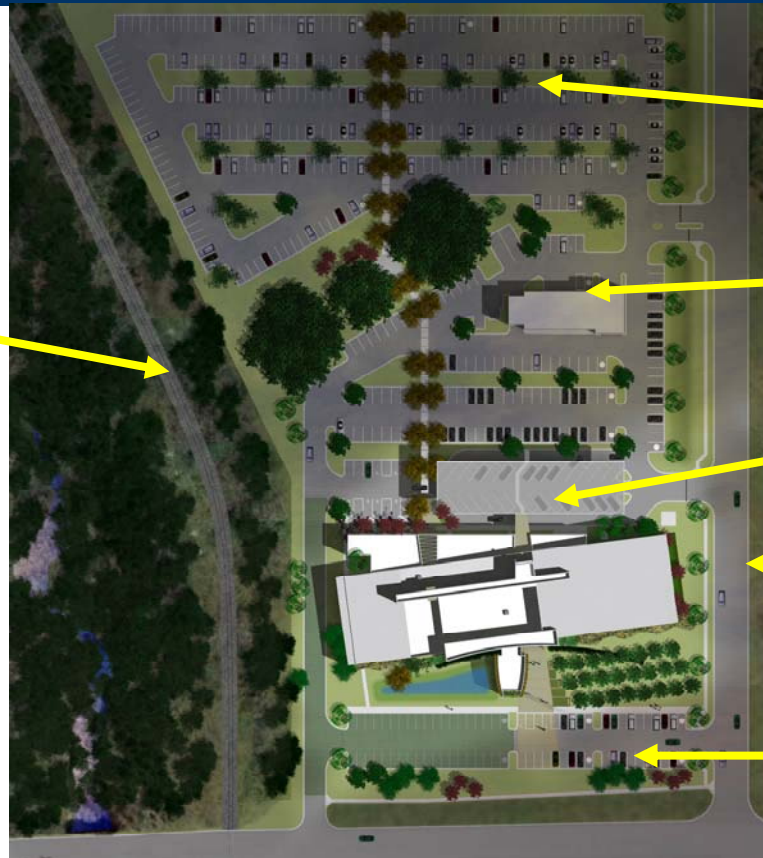


South Central

# Site Plan

Future DART  
Rail Line  
Extension

University of  
North Texas  
Dallas Campus



Staff Parking

Fleet Refueling

Fleet Parking &  
Sally-port

New Side  
Access Street

Visitor Parking

East Camp Wisdom Road

## South Central - Funding & Construction Schedule

- Funded 2003 - Capital Bond Program
- Construction Contract: \$10.3 mil.  
(General Contractor: Core Construction, Inc.)
- Construction to Begin: August, 2006
- Completion: August, 2007

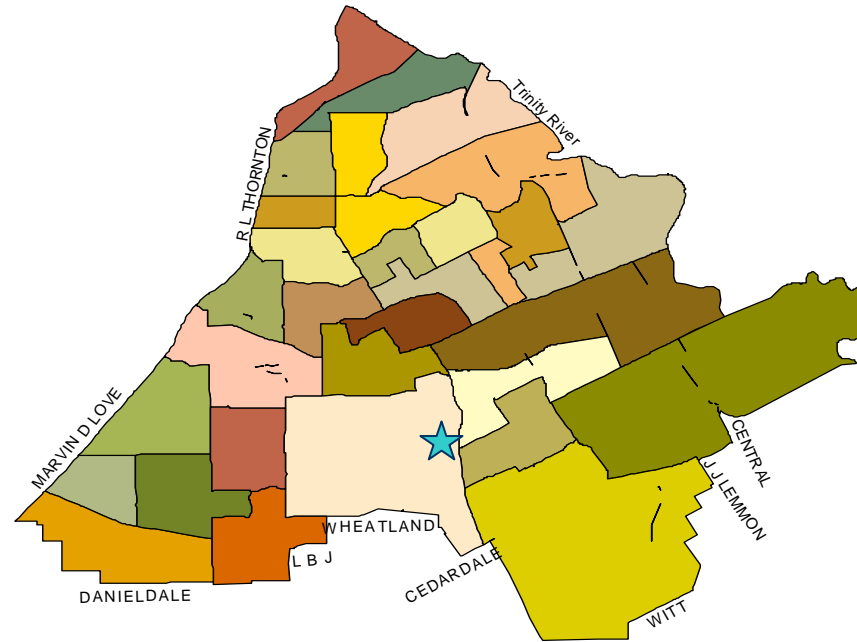
## Building Facts:

- 38,000 Square Feet.
- First Police Station with Community Room.
- Leadership in Energy and Environmental Design (LEED) - “Green” building design.
- Ground-breaking Ceremony scheduled for: September 2006, date and time TBD.

# South Central Is Scheduled to Open in August, 2007

- The new South Central Division offers:
  - The opportunity to reduce overcrowding at all existing Patrol Divisions
  - The opportunity to use natural barriers as dividing lines for Patrol Divisions
  - The opportunity to place neighborhoods into the same Division
  - The opportunity to reallocate personnel and reconfigure beats as determined by the computer software program, Staff Wizard.
- Staff Wizard examines historical statistical data relating number of calls, number of officers, time on call, priority of call, type of call, land area and street mileage
- Staff Wizard mathematically produces results based on service delivery efficiency standards

# South Central Division



## Proposed

54.9 Square miles

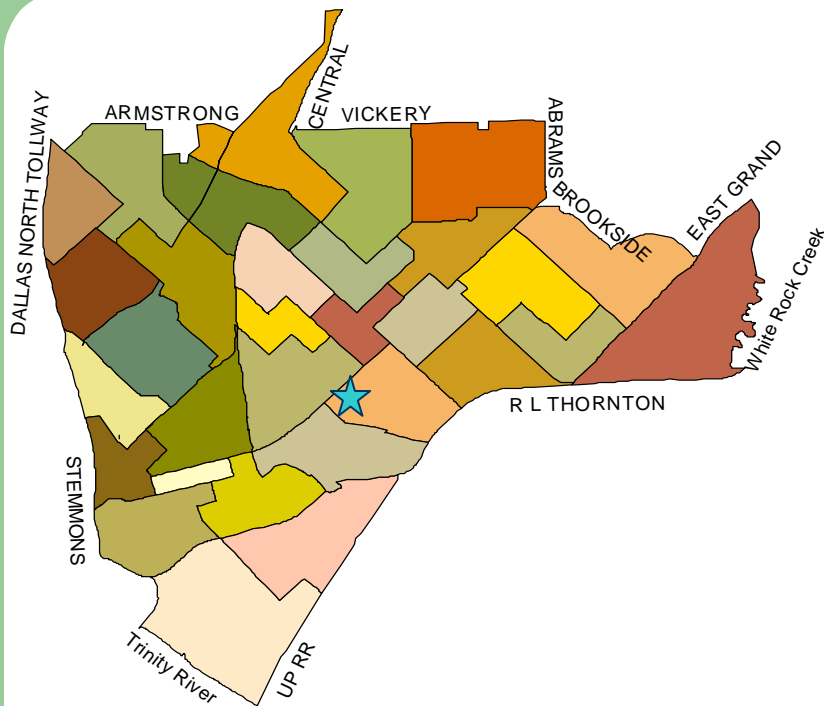
Population of 114,011

92,215 Calls Dispatched (2005)

32 Beats

15.27% of workload

# Central Division



## Current

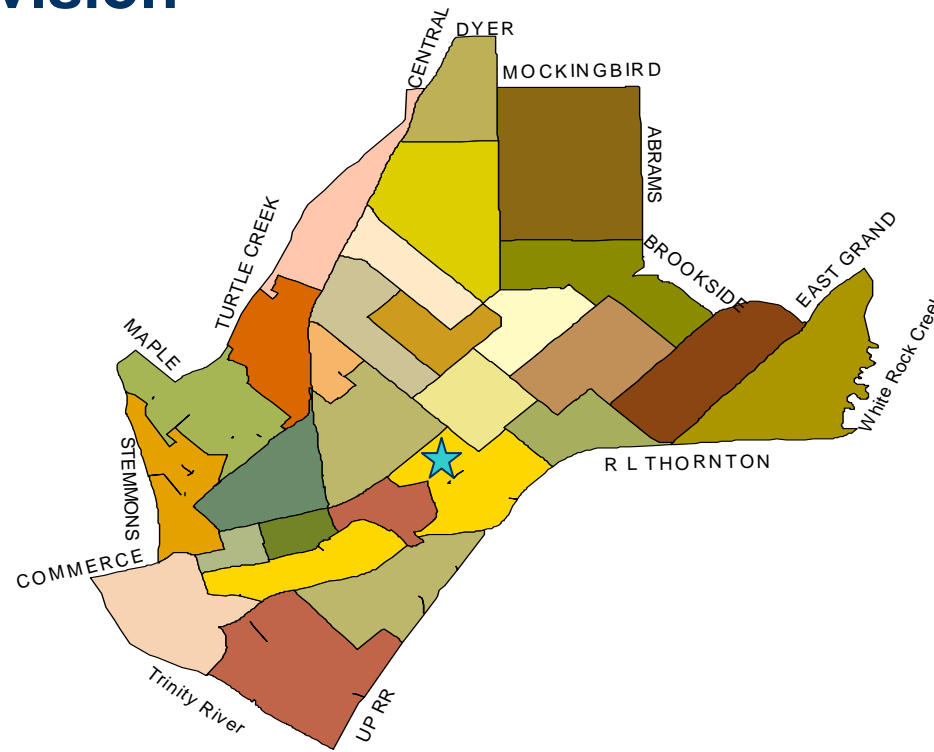
14.5 Square miles

Population of 92,487

83,867 Calls Dispatched (2005)

31 Beats

10.64% of workload



## Proposed

15.3 Square miles

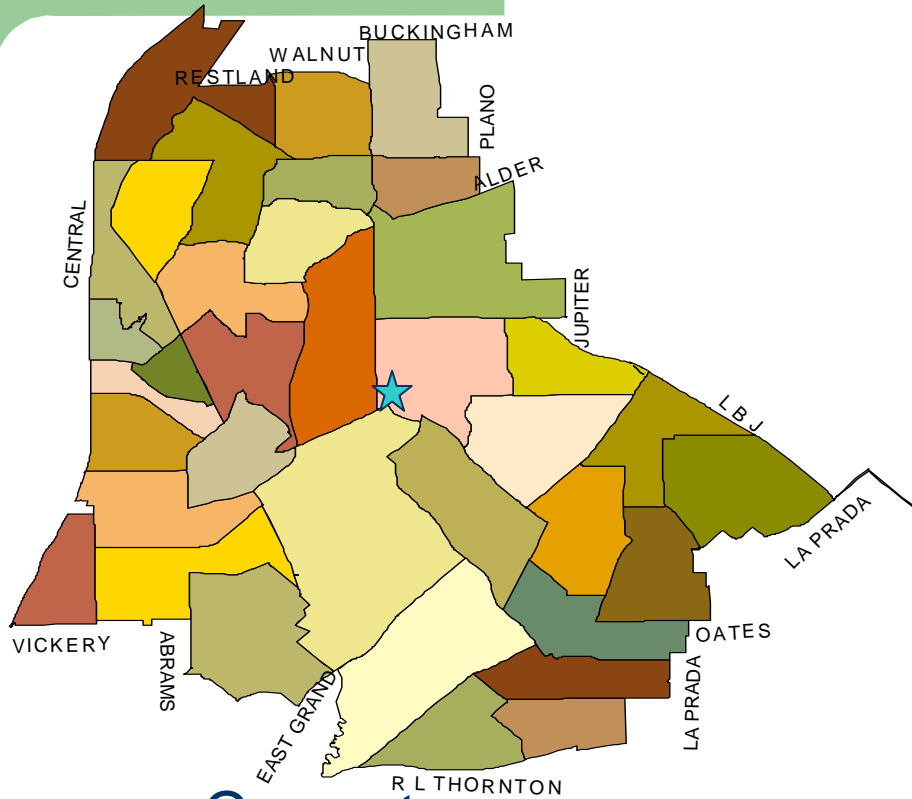
Population of 87,263

81,310 Calls Dispatched (2005)

28 Beats

9.66% of workload

# Northeast Division



**Current**

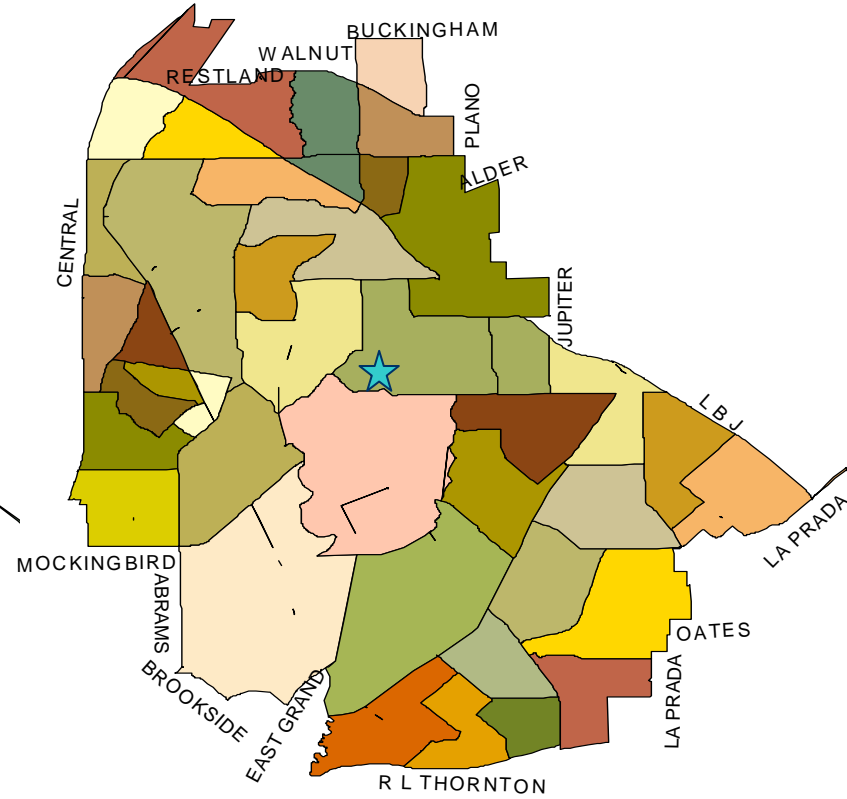
85.5 Square miles

Population of 272,414

131,012 Calls Dispatched (2005)

37 Beats

18.82% of workload



**Proposed**

83.7 Square miles

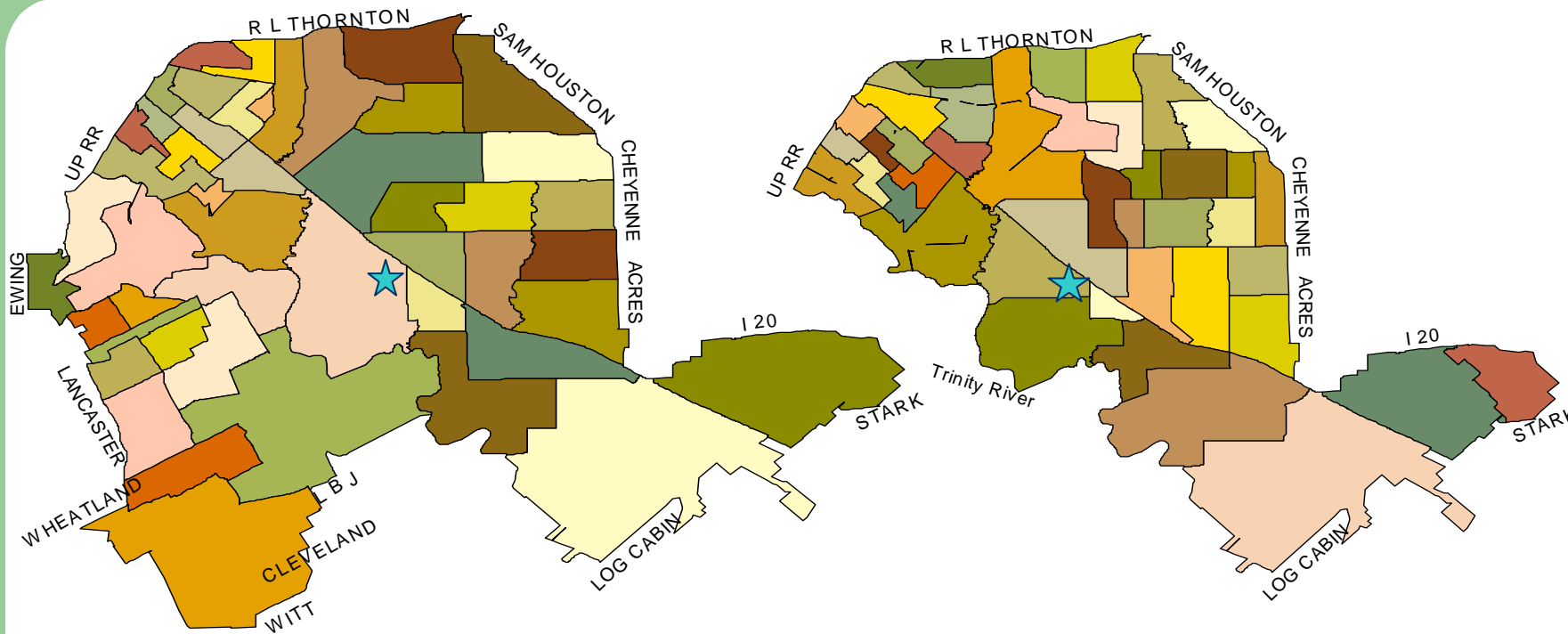
Population of 263,940

124,860 Calls Dispatched (2005)

41 Beats

17.26% of workload

# Southeast Division



## Current

96.3 Square miles

Population of 204,088

157,298 Calls Dispatched (2005)

48 Beats

24.54% of workload

## Proposed

65.0 Square miles

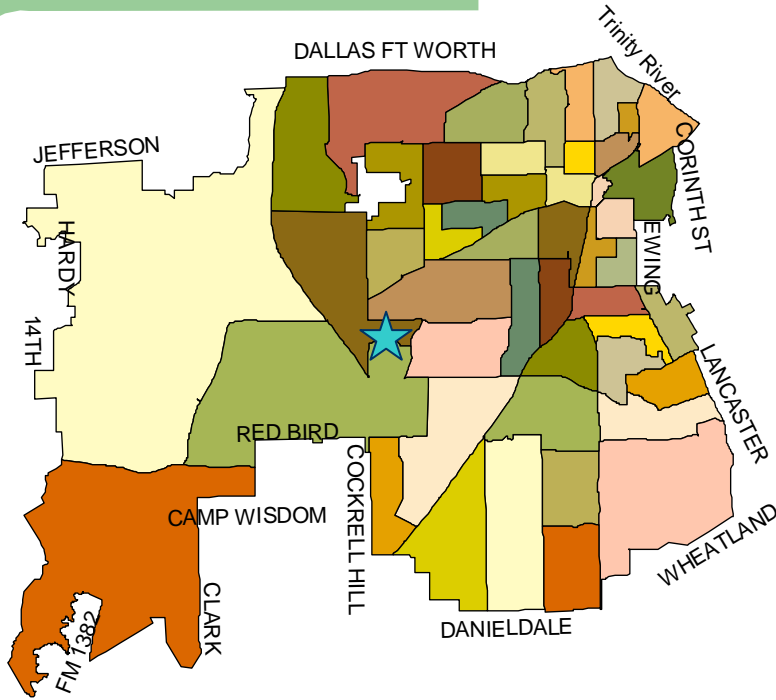
Population of 158,649

115,803 Calls Dispatched (2005)

42 Beats

18.64% of workload

# Southwest Division



## Current

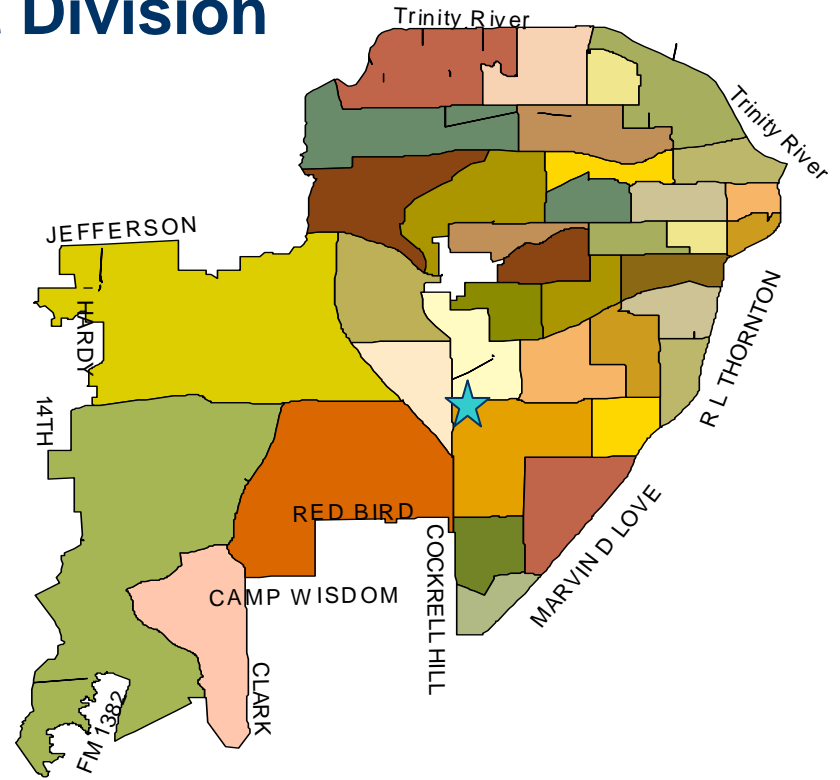
87.2 Square miles

Population of 237,632

148,545 Calls Dispatched (2005)

47 Beats

20.40% of workload



## Proposed

75.0 Square miles

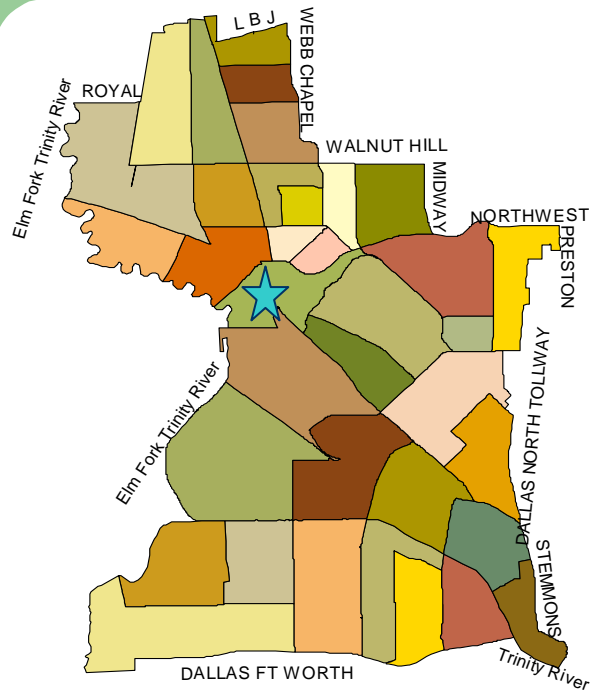
Population of 192,817

117,870 Calls Dispatched (2005)

37 Beats

15.27% of workload

# Northwest Division



## Current

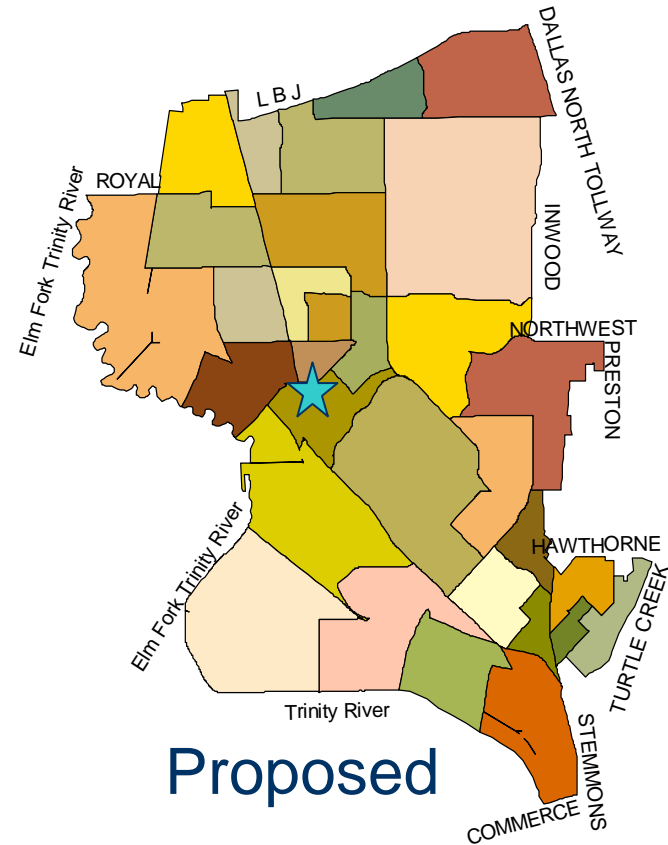
48.5 Square miles

Population of 135,400

100,315 Calls Dispatched (2005)

36 Beats

14.16% of workload



## Proposed

47.7 Square miles

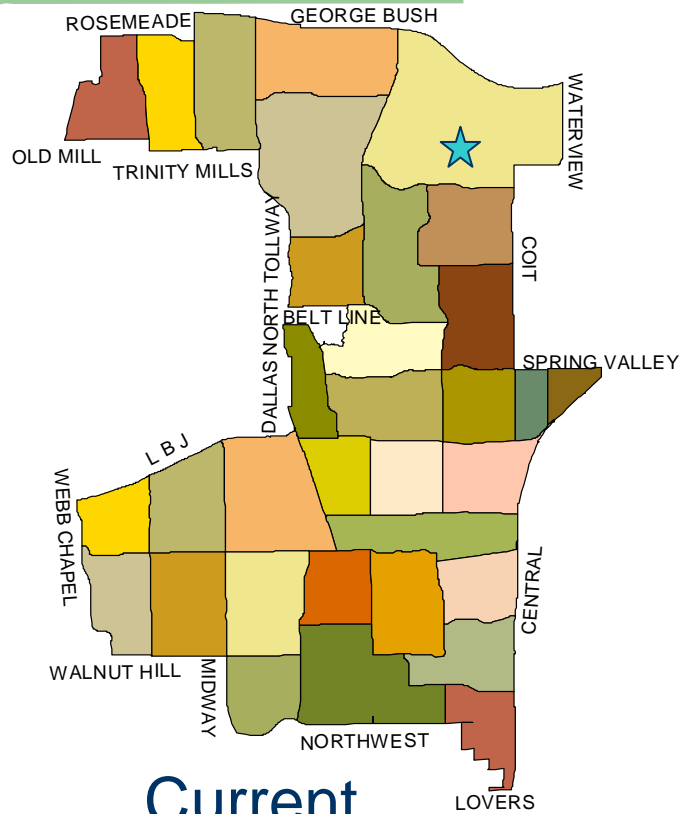
Population of 155,084

100,001 Calls Dispatched (2005)

31 Beats

13.46% of workload

# North Central Division



Current

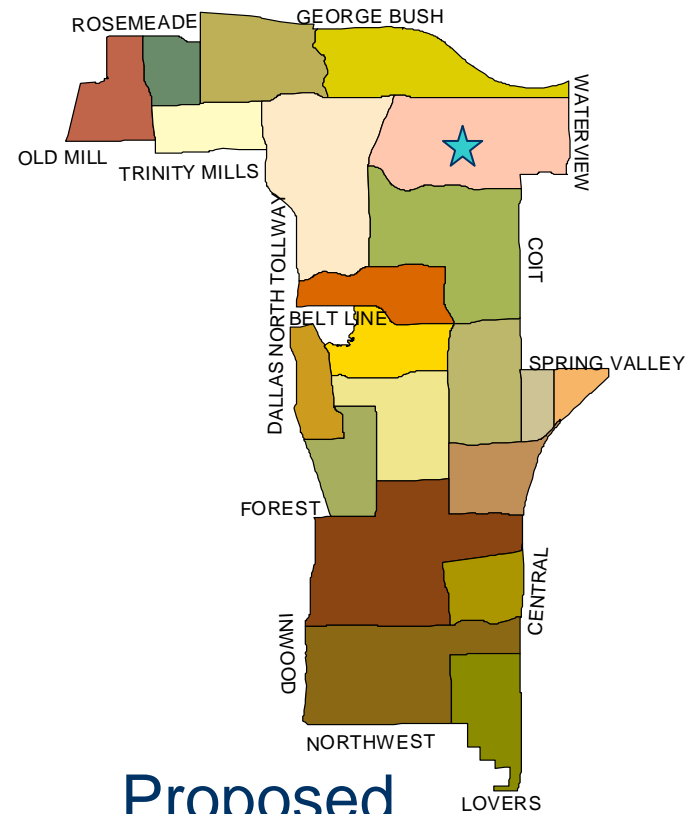
46.7 Square miles

Population of 219,248

83,200 Calls Dispatched (2005)

33 Beats

11.43% of workload



Proposed

37.1 Square miles

Population of 189,505

72,178 Calls Dispatched (2005)

21 Beats

10.44% of workload

## FAQ's

- **What are the boundary changes to each division?**

### **Central**

**Loses-** Oak Lawn area bounded by the Tollway, Highland Park City limits, and Turtle Creek to Northwest Division

**Gains-** Lower Greenville area bounded by Mockingbird, Abrams, Vickery, and N. Central Expressway from Northeast Division

**Gains-** Lower Industrial Blvd area from Commerce south to Cadiz from Central Division

## FAQ's

- **What are the boundary changes to each division?**

**Northeast** **Loses-** Lower Greenville area from Mockingbird, Abrams, Vickery, and N. Central Expressway to Central Division

**Southeast** **Loses-** All of Oak Cliff southwest of the Trinity River to South Central Division

**Southwest** **Loses-** Oak Cliff east of RLT Freeway and southeast of MD Love Freeway to South Central Division

**Gains-** West Dallas bounded by I-30, Trinity River, and the west city limits from Northwest Division

## FAQ's

- What are the boundary changes to each division?

**Northwest Loses-** West Dallas bounded by the Trinity River, I30 and the west city limits to Southwest Division

**Loses-** Industrial Blvd. from Commerce south to Cadiz to Central Division

**Gains-** Oak Lawn bounded by the Tollway, Highland Park city limits, and Turtle Creek from Central Division

**Gains-** North Dallas area bounded by LBJ, Inwood, Webb Chapel, and Northwest Highway from North Central Division

## FAQ's

- **What are the boundary changes to each division?**

**North Central Loses-** North Dallas area bounded by LBJ Freeway, Webb Chapel, Northwest Highway, and Inwood to Northwest Division

## FAQ's

- **Northwest gains population but loses beats. Why?**
  - Beats are based on workload.
  - The area gained by Northwest from North Central has a lower workload.
  - Beats and staffing are not normally based on population.

## FAQ's

- **What additional personnel costs will be incurred with staffing South Central?**
  - 1 Deputy Chief
  - 5 Lieutenants
  - 32 Sergeants
  - 155 Officers (Initial Staffing)

## FAQ's

- **What are the LEED features of South Central?**
  - Geo-Thermal heating and cooling system and natural lighting produce up to a 70% savings in energy usage.
  - Recycled materials used throughout construction of the building.
  - Landscaping requires little water and maintenance.

## FAQ's

- **What will the Community Room be used for?**
  - Crime Watch Meetings
  - Town Hall Meetings
  - Community Groups may request use of room.
  - Provides a meeting area with restrooms and kitchen facilities within the station but outside secure areas.

## FAQ's

- **Who is coordinating the Groundbreaking Ceremony?**
  - Lieutenant Todd Thomasson
  - Levi Williams - Manager, Community Affairs, Dallas Police Department

# Questions?

