



Dallas/Fort Worth International Airport DFW Connector – SH 114/SH 121 Corridor

City of Dallas
Transportation & Environment Committee Briefing
April 9, 2007



DFW Connector Project

Overview

- Largest Project in TxDOT history
- Estimated construction cost is \$789 million
- Initial planning began in 1996
- Construction duration is approximately 5-6 years
- Impact to DFW Airport north entry ingress/egress anticipated
- 7 municipalities involved
 - Southlake
 - Colleyville
 - Coppell
 - Grapevine
 - Irving
 - Lewisville
 - DFW Airport



DFW Connector Project

Overview (Cont.)

- Coordinating with TxDOT
 - Participate on approval of construction sequencing/detours
 - Reserved Rail access to DFW Airport
 - Enhanced access to Commercial Development parcels
 - Established Easement for utility infrastructure expansion
 - Improve cargo access/egress on Airfield Drive

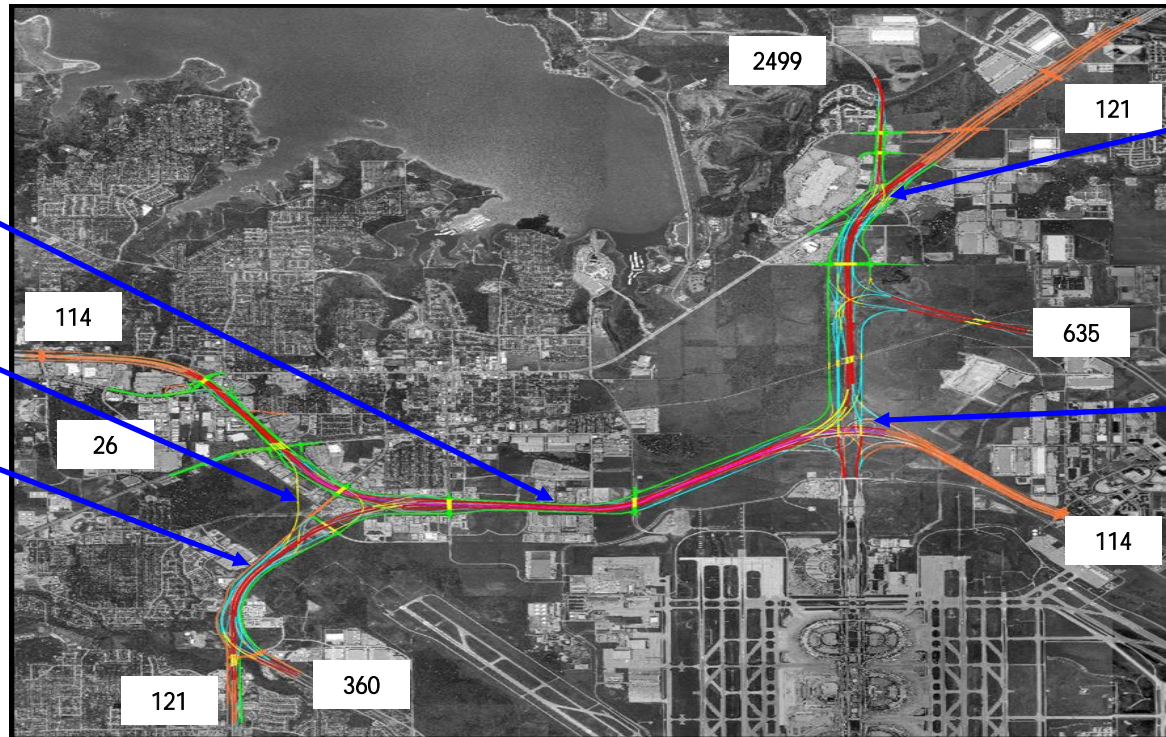
DFW Connector Project

Map Overview

Managed Lanes

Western Direct Connector

Collector-Distributor Roads



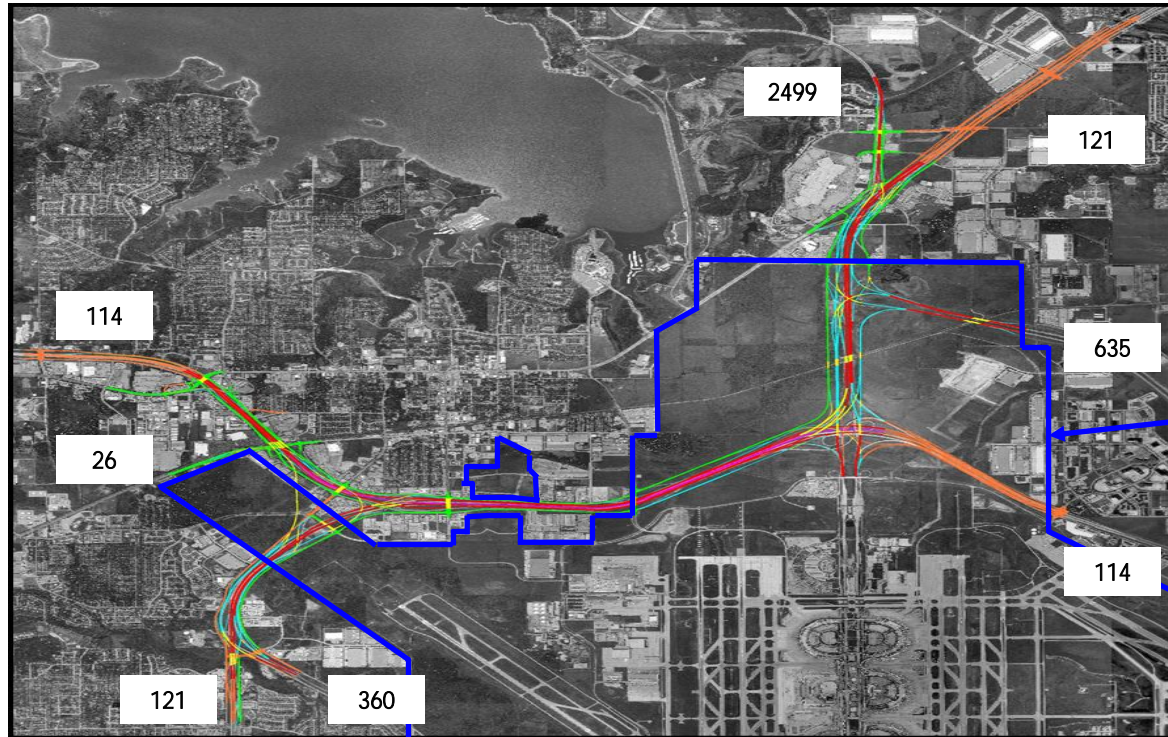
IH 635 & FM 2499

SH 114 / International Parkway Interchange

- The DFW Connector is the east-west convergence point of four major highways: SH 114, SH 121, SH 360 and IH 635
- Future projections indicate an additional 180,000 vehicles per day by 2025

DFW Connector Project

Right of Way Acquisition

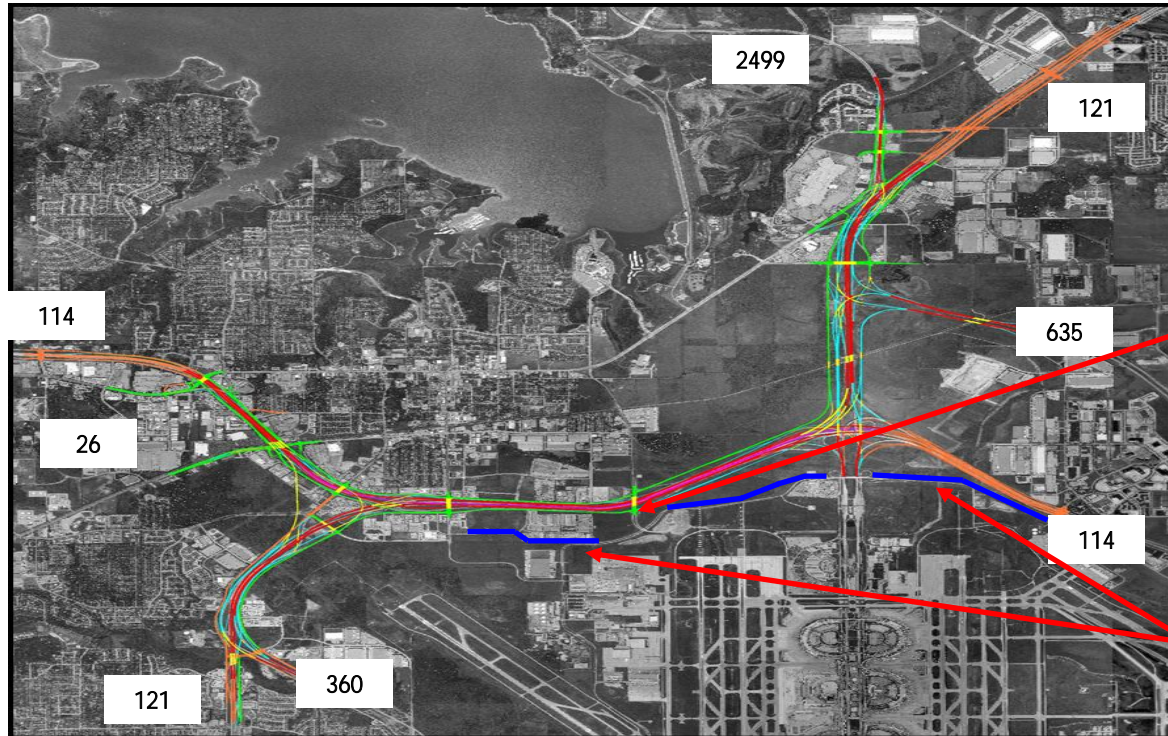


Airport
boundaries

- Approximately 140 acres of DFW Airport land needed by TxDOT

DFW Connector Project

Cargo Access/Egress



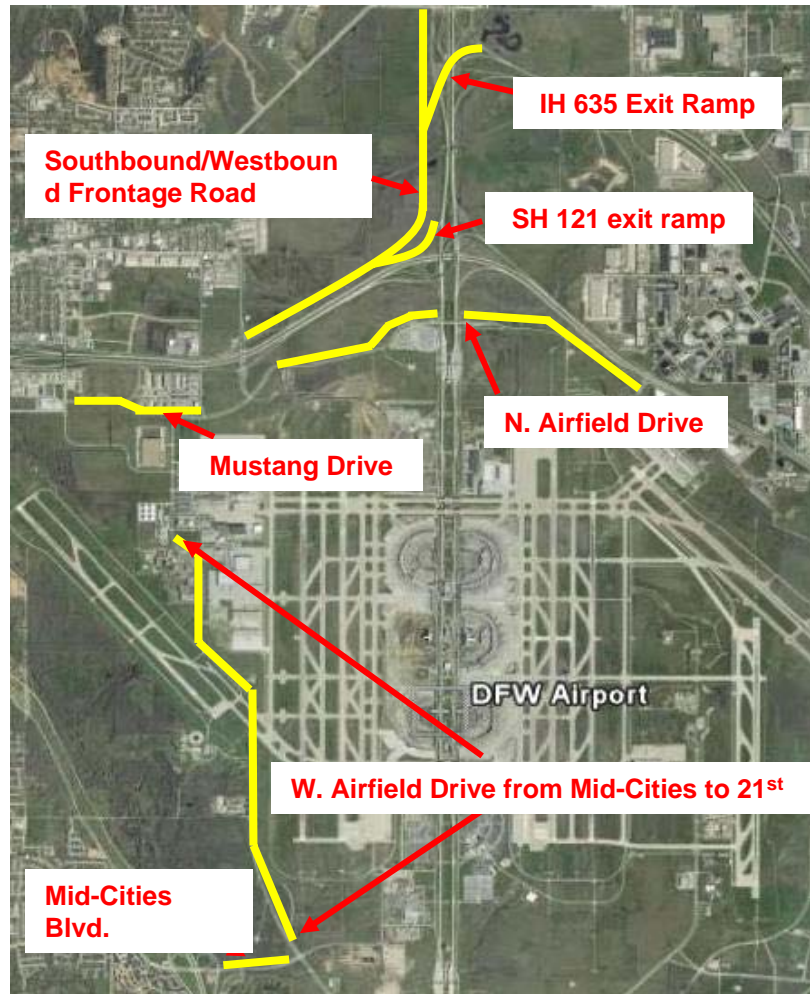
Entry ramp to 114 being eliminated

N. Airfield Dr. Upgrade & Mustang extension

- Eastbound ramp to SH 114 at Texan Trail being eliminated
- Extend Mustang Drive to provide access to Main Street highway ramp and upgrade N. Airfield Drive

DFW Connector Project

Proposed Airport Improvements



- Exit Ramp – WB IH 635 to SB Frontage Road
- SB/WB Frontage Road from Bass Pro Drive to Texas Trail
- Exit Ramp – WB SH 121 to SB/WB Frontage Road
- Extend Mustang Drive
- Upgrade N. Airfield Drive
- Upgrade W. Airfield section
- Upgrade Mid-Cities Blvd.



DFW Connector Project

Future Action

- | | |
|---------------------------------|---------------|
| ▪ Coordinate with Cities | On-Going |
| ▪ Brief Airport Board | February 2007 |
| ▪ Brief Owner Cities | March 2007 |
| ▪ Public Hearing | August 2007 |
| ▪ Board Approval of Acquisition | November 2007 |
| ▪ Owner Cities Approval | January 2008 |
| ▪ Construction Start | Early 2009 |



FM
2499

SH 121

SH 114

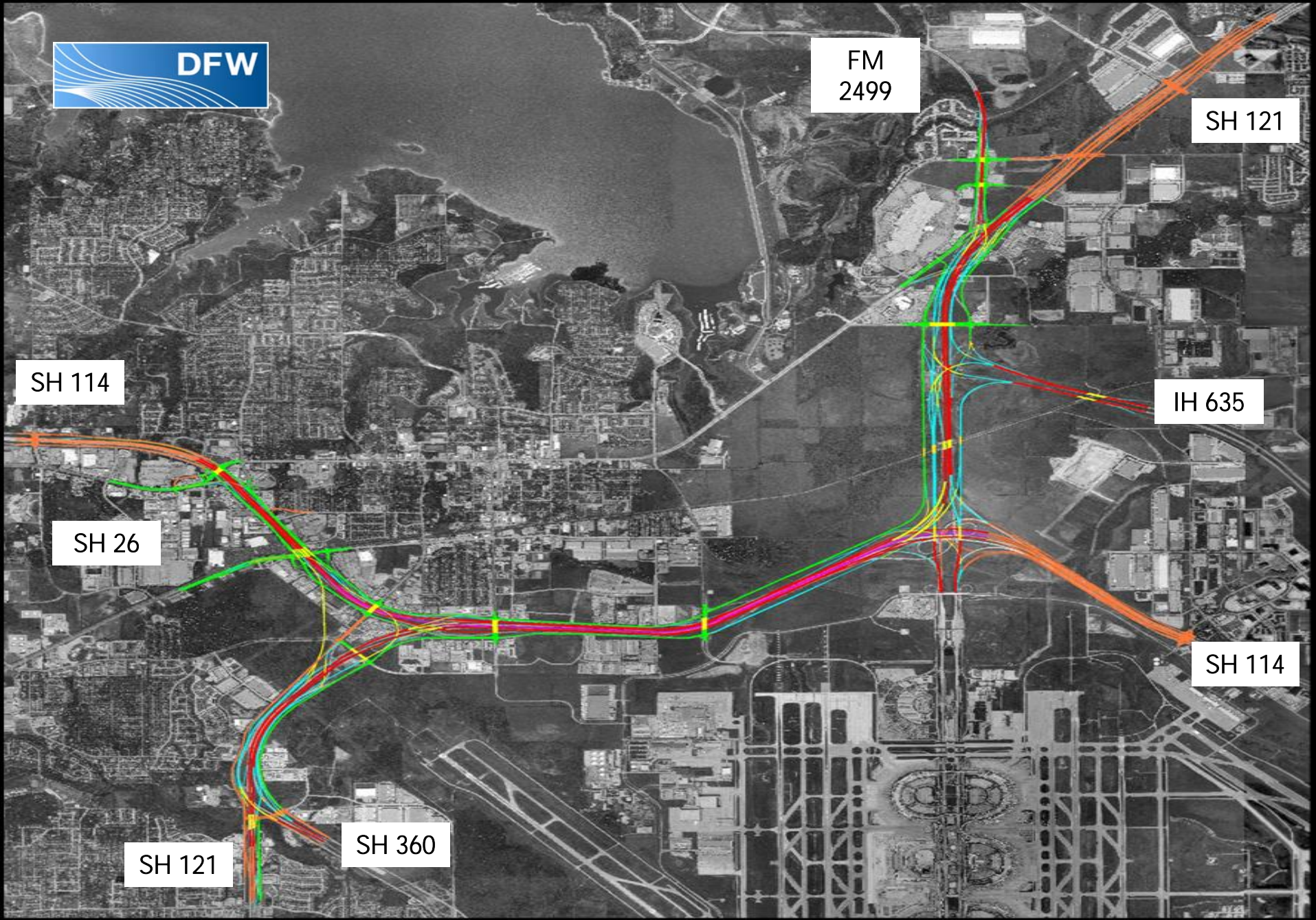
IH 635

SH 26

SH 114

SH 121

SH 360





Dallas/Fort Worth International Airport DFW Connector – SH 114/SH 121 Corridor

City of Dallas
Transportation & Environment Committee Briefing
April 9, 2007